

AIR OPS

ANVIL FLAT
OR-RSF-000413 OR-RSF-000209

10/15/2023

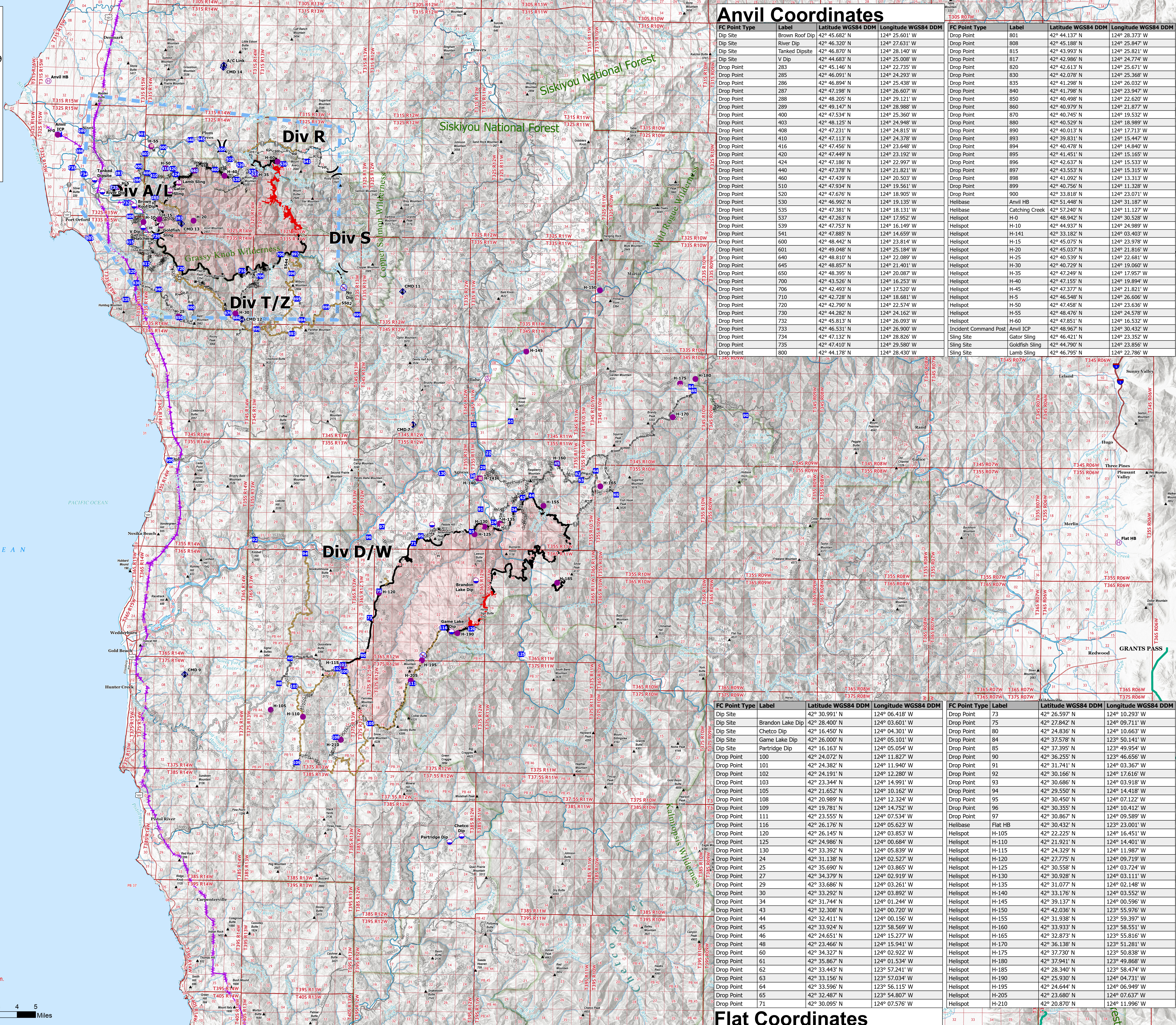
22,170 ACRES AT 10/01/2023 2111
34,242 ACRES AT 9/30/2023 2156



- Aerial Hazard
- Dip Site
- Helispot
- Helibase
- Sling Site
- Division Break
- Incident Command Post
- Drop Point
- Value at Risk
- Repeater
- Restricted Water Source
- Contained
- Uncontained

NAD 1983 2011 Datum
Lat/Long Grid





Anvil Coordinates

FC Point Type	Label	Latitude WGS84 DDM	Longitude WGS84 DDM	FC Point Type	Label	Latitude WGS84 DDM	Longitude WGS84 DDM	
Dip Site	Brown Roof Dip	42° 45.682' N	124° 25.601' W	Drop Point	801	42° 44.137' N	124° 28.373' W	
Dip Site	River Dip	42° 46.320' N	124° 27.631' W	Drop Point	808	42° 45.188' N	124° 25.847' W	
Dip Site	Tanked Dipsete	42° 46.870' N	124° 28.140' W	Drop Point	815	42° 43.993' N	124° 25.821' W	
Dip Site	V Dip	42° 44.683' N	124° 25.008' W	Drop Point	817	42° 42.986' N	124° 24.774' W	
Drop Point	283	42° 45.146' N	124° 22.735' W	Drop Point	820	42° 42.613' N	124° 25.671' W	
Drop Point	285	42° 46.091' N	124° 24.293' W	Drop Point	830	42° 42.078' N	124° 25.368' W	
Drop Point	286	42° 46.894' N	124° 25.438' W	Drop Point	835	42° 41.298' N	124° 26.032' W	
Drop Point	287	42° 47.198' N	124° 26.607' W	Drop Point	840	42° 41.798' N	124° 23.947' W	
Drop Point	288	42° 48.205' N	124° 29.121' W	Drop Point	850	42° 40.498' N	124° 22.620' W	
Drop Point	289	42° 49.147' N	124° 28.988' W	Drop Point	860	42° 40.979' N	124° 21.877' W	
Drop Point	400	42° 47.534' N	124° 25.360' W	Drop Point	870	42° 40.745' N	124° 19.532' W	
Drop Point	403	42° 48.125' N	124° 24.948' W	Drop Point	880	42° 40.529' N	124° 18.989' W	
Drop Point	408	42° 47.231' N	124° 24.815' W	Drop Point	890	42° 40.013' N	124° 17.713' W	
Drop Point	410	42° 47.113' N	124° 24.378' W	Drop Point	893	42° 39.831' N	124° 15.447' W	
Drop Point	416	42° 47.456' N	124° 23.648' W	Drop Point	894	42° 40.478' N	124° 14.840' W	
Drop Point	420	42° 47.449' N	124° 23.192' W	Drop Point	895	42° 41.451' N	124° 15.165' W	
Drop Point	424	42° 47.186' N	124° 22.997' W	Drop Point	896	42° 42.637' N	124° 15.533' W	
Drop Point	440	42° 47.378' N	124° 21.821' W	Drop Point	897	42° 43.553' N	124° 15.315' W	
Drop Point	460	42° 47.439' N	124° 20.503' W	Drop Point	898	42° 41.092' N	124° 13.313' W	
Drop Point	510	42° 47.934' N	124° 19.135' W	Drop Point	899	42° 40.756' N	124° 13.128' W	
Drop Point	520	42° 47.676' N	124° 18.905' W	Drop Point	900	42° 33.818' N	124° 23.071' W	
Drop Point	530	42° 46.992' N	124° 19.135' W	Helibase	Anvil HB	42° 51.448' N	124° 31.187' W	
Drop Point	535	42° 47.381' N	124° 18.131' W	Helibase	Catching Creek	42° 57.240' N	124° 11.127' W	
Drop Point	537	42° 47.263' N	124° 17.952' W	Helispot	H-0	42° 48.942' N	124° 30.528' W	
Drop Point	539	42° 47.753' N	124° 16.149' W	Helispot	H-10	42° 44.937' N	124° 24.989' W	
Drop Point	541	42° 47.885' N	124° 14.659' W	Helispot	H-141	42° 33.182' N	124° 03.403' W	
Drop Point	600	42° 48.442' N	124° 23.814' W	Helispot	H-15	42° 45.075' N	124° 23.978' W	
Drop Point	601	42° 49.048' N	124° 25.184' W	Helispot	H-20	42° 45.037' N	124° 21.816' W	
Drop Point	640	42° 48.810' N	124° 22.089' W	Helispot	H-25	42° 40.539' N	124° 22.681' W	
Drop Point	645	42° 48.857' N	124° 21.401' W	Helispot	H-30	42° 40.729' N	124° 19.060' W	
Drop Point	650	42° 48.395' N	124° 20.087' W	Helispot	H-35	42° 47.249' N	124° 17.957' W	
Drop Point	700	42° 43.526' N	124° 16.253' W	Helispot	H-40	42° 47.155' N	124° 19.894' W	
Drop Point	706	42° 42.493' N	124° 17.520' W	Helispot	H-45	42° 47.377' N	124° 21.821' W	
Drop Point	710	42° 42.728' N	124° 18.681' W	Helispot	H-5	42° 46.548' N	124° 26.606' W	
Drop Point	720	42° 42.790' N	124° 22.574' W	Helispot	H-50	42° 47.458' N	124° 23.636' W	
Drop Point	730	42° 44.282' N	124° 24.162' W	Helispot	H-55	42° 48.476' N	124° 24.578' W	
Drop Point	732	42° 45.813' N	124° 26.093' W	Helispot	H-60	42° 47.851' N	124° 16.532' W	
Drop Point	733	42° 46.531' N	124° 26.900' W	Helispot	Incident Command Post	Anvil ICP	42° 48.967' N	124° 30.432' W
Drop Point	734	42° 47.132' N	124° 28.826' W	Sling Site	Gator Sling	42° 46.421' N	124° 23.352' W	
Drop Point	735	42° 47.410' N	124° 29.580' W	Sling Site	Goldfish Sling	42° 44.790' N	124° 23.856' W	
Drop Point	800	42° 44.178' N	124° 28.430' W	Sling Site	Lamb Sling	42° 46.795' N	124° 22.786' W	

Flat Coordinates

FC Point Type	Label	Latitude WGS84 DDM	Longitude WGS84 DDM	FC Point Type	Label	Latitude WGS84 DDM	Longitude WGS84 DDM
Drop Point	73	42° 26.597' N	124° 10.293' W	Drop Point	73	42° 26.597' N	124° 10.293' W
Drop Point	75	42° 27.842' N	124° 09.711' W	Drop Point	75	42° 27.842' N	124° 09.711' W
Drop Point	80	42° 24.836' N	124° 10.663' W	Drop Point	80	42° 24.836' N	124° 10.663' W
Drop Point	84	42° 37.578' N	123° 50.141' W	Drop Point	84	42° 37.578' N	123° 50.141' W
Drop Point	85	42° 37.395' N	123° 49.954' W	Drop Point	85	42° 37.395' N	123° 49.954' W
Drop Point	90	42° 36.255' N	123° 46.656' W	Drop Point	90	42° 36.255' N	123° 46.656' W
Drop Point	91	42° 31.741' N	124° 03.367' W	Drop Point	91	42° 31.741' N	124° 03.367' W
Drop Point	92	42° 30.166' N	124° 17.616' W	Drop Point	92	42° 30.166' N	124° 17.616' W
Drop Point	93	42° 30.686' N	124° 03.918' W	Drop Point	93	42° 30.686' N	124° 03.918' W
Drop Point	94	42° 29.550' N	124° 14.418' W	Drop Point	94	42° 29.550' N	124° 14.418' W
Drop Point	95	42° 30.450' N	124° 07.122' W	Drop Point	95	42° 30.450' N	124° 07.122' W
Drop Point	96	42° 30.355' N	124° 10.412' W	Drop Point	96	42° 30.355' N	124° 10.412' W
Drop Point	97	42° 30.867' N	124° 09.589' W	Drop Point	97	42° 30.867' N	124° 09.589' W
Helibase	Flat HB	42° 30.432' N	123° 23.001' W	Helibase	Flat HB	42° 30.432' N	123° 23.001' W
Helispot	H-105	42° 22.225' N	124° 16.451' W	Helispot	H-105	42° 22.225' N	124° 16.451' W
Helispot	H-110	42° 21.921' N	124° 14.401' W	Helispot	H-110	42° 21.921' N	124° 14.401' W
Helispot	H-115	42° 24.329' N	124° 11.987' W	Helispot	H-115	42° 24.329' N	124° 11.987' W
Helispot	H-120	42° 27.775' N	124° 09.719' W	Helispot	H-120	42° 27.775' N	124° 09.719' W
Helispot	H-125	42° 30.558' N	124° 03.724' W	Helispot	H-125	42° 30.558' N	124° 03.724' W
Helispot	H-130	42° 30.928' N	124° 03.111' W	Helispot	H-130	42° 30.928' N	124° 03.111' W
Helispot	H-135	42° 31.077' N	124° 02.148' W	Helispot	H-135	42° 31.077' N	124° 02.148' W
Helispot	H-140	42° 33.176' N	124° 03.552' W	Helispot	H-140	42° 33.176' N	124° 03.552' W
Helispot	H-145	42° 39.137' N	124° 00.596' W	Helispot	H-145	42° 39.137' N	124° 00.596' W
Helispot	H-150	42° 42.036' N	123° 55.976' W	Helispot	H-150	42° 42.036' N	123° 55.976' W
Helispot	H-155	42° 31.938' N	123° 59.397' W	Helispot	H-155	42° 31.938' N	123° 59.397' W
Helispot	H-160	42° 33.933' N	123° 58.551' W	Helispot	H-160	42° 33.933' N	123° 58.551' W
Helispot	H-165	42° 32.873' N	123° 55.816' W	Helispot	H-165	42° 32.873' N	123° 55.816' W
Helispot	H-170	42° 36.138' N	123° 51.281' W	Helispot	H-170	42° 36.138' N	123° 51.281' W
Helispot	H-175	42° 37.730' N	123° 50.838' W	Helispot	H-175	42° 37.730' N	123° 50.838' W
Helispot	H-180	42° 37.941' N	123° 49.868' W	Helispot	H-180	42° 37.941' N	123° 49.868' W
Helispot	H-185	42° 28.340' N	123° 58.474' W	Helispot	H-185	42° 28.340' N	123° 58.474' W
Helispot	H-190	42° 25.930' N	124° 04.731' W	Helispot	H-190	42° 25.930' N	124° 04.731' W
Helispot	H-195	42° 24.644' N	124° 06.949' W	Helispot	H-195	42° 24.644' N	124° 06.949' W
Helispot	H-205	42° 23.680' N	124° 07.637' W	Helispot	H-205	42° 23.680' N	124° 07.637' W
Helispot	H-210	42° 20.870' N	124° 11.996' W	Helispot	H-210	42° 20.870' N	124° 11.996' W

Flat Coordinates