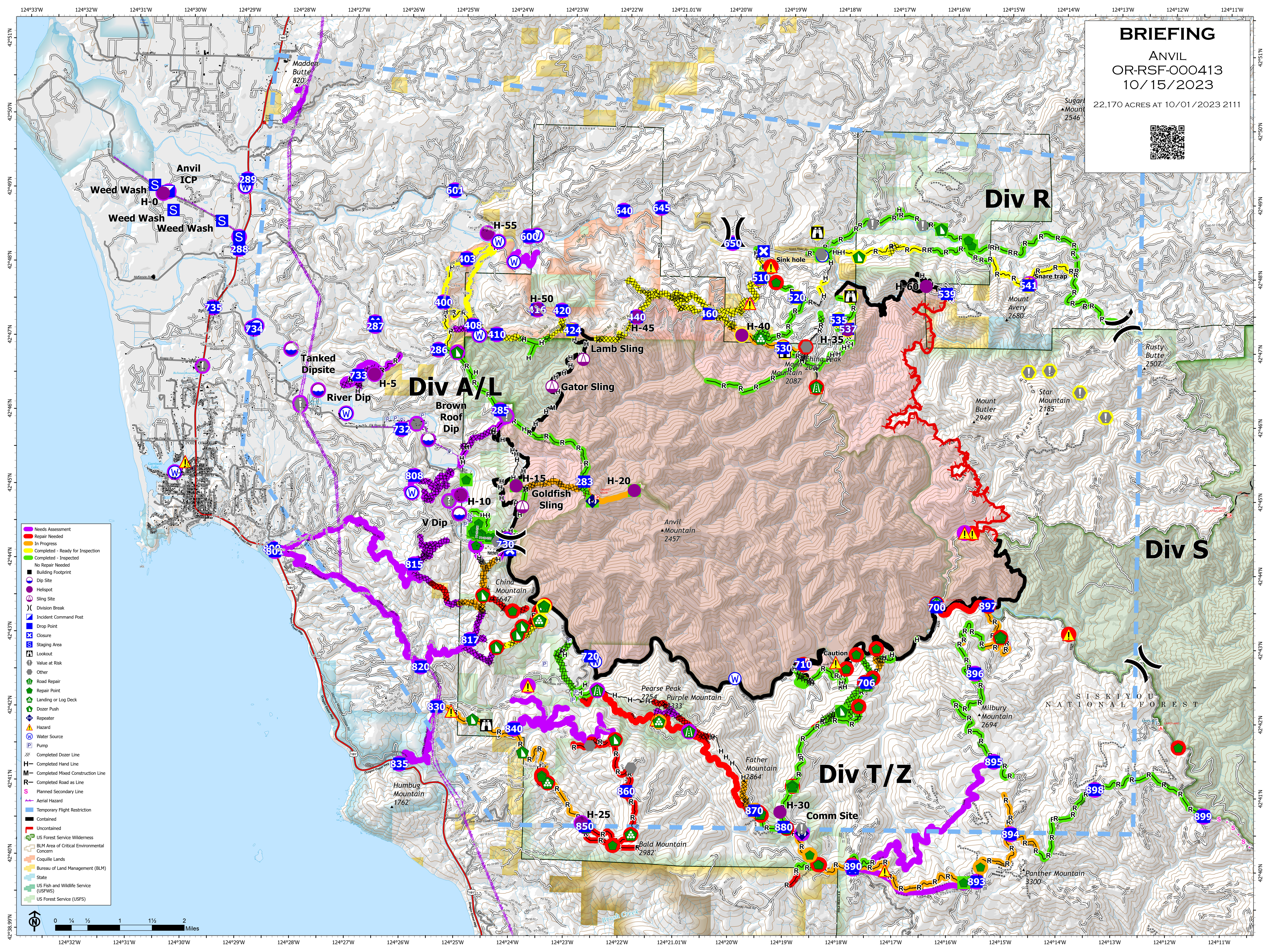


# BRIEFING

ANVIL  
OR-RSF-000413  
10/15/2023

22,170 ACRES AT 10/01/2023 2111



- Needs Assessment
- Repair Needed
- In Progress
- Completed - Ready for Inspection
- Completed - Inspected
- No Repair Needed
- Building Footprint
- Dip Site
- Helispot
- Sling Site
- Division Break
- Incident Command Post
- Drop Point
- Closure
- Staging Area
- Lookout
- Value at Risk
- Other
- Road Repair
- Repair Point
- Landing or Log Deck
- Dozer Push
- Repeater
- Hazard
- Water Source
- Pump
- Completed Dozer Line
- Completed Hand Line
- Completed Mixed Construction Line
- Completed Road as Line
- Planned Secondary Line
- Planned Hazard
- Temporary Flight Restriction
- Contained
- Uncontained
- US Forest Service Wilderness
- BLM Area of Critical Environmental Concern
- Coquille Lands
- Bureau of Land Management (BLM)
- State
- US Fish and Wildlife Service (USFWS)
- US Forest Service (USFS)

