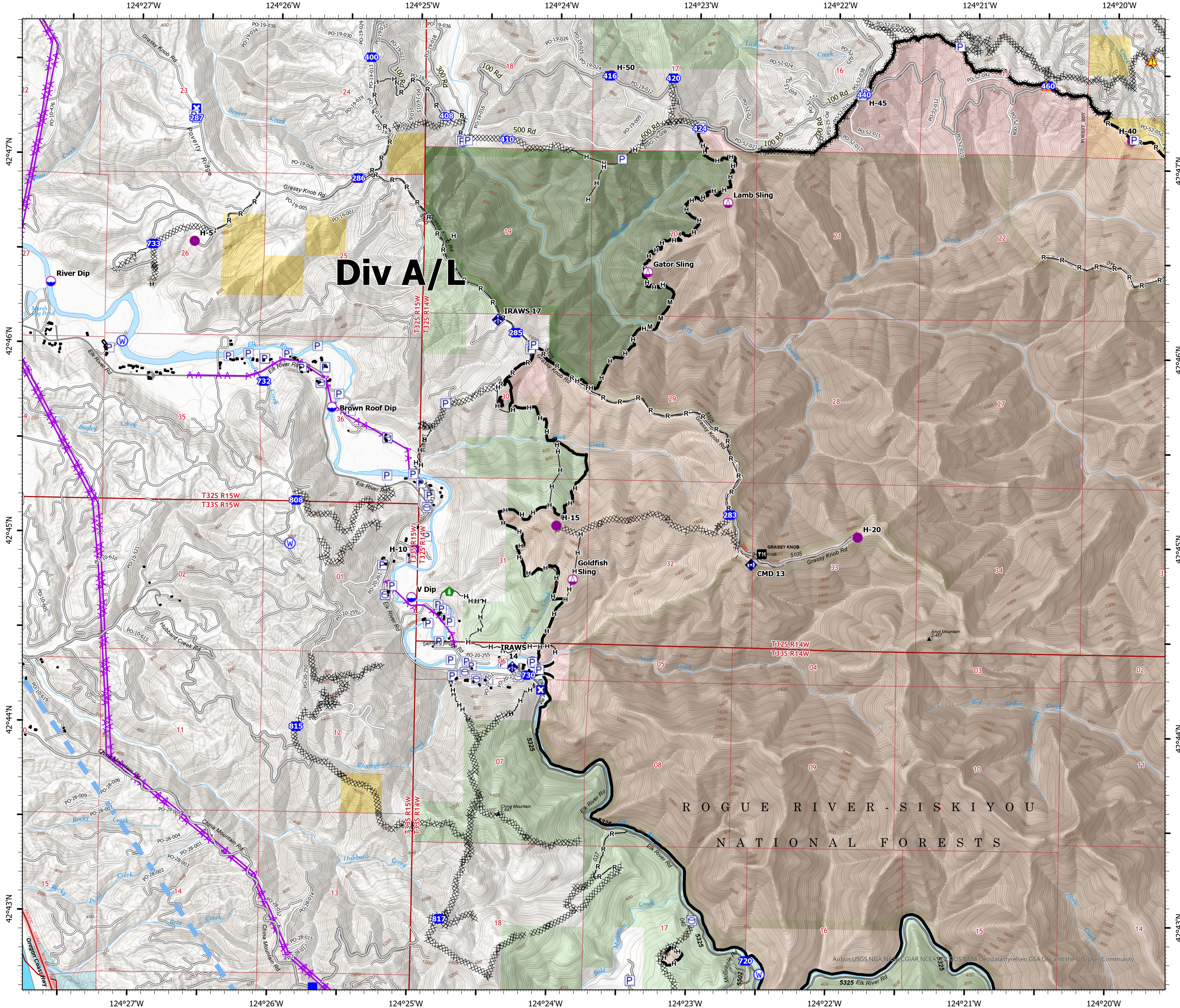


OPERATIONS

ANVIL DIV A
OR-RSF-000413
10/15/2023
22,170 ACRES AT 10/01/2023 2111

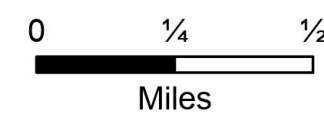


- Dip Site
- Helispot
- Sling Site
- Division Break
- Drop Point
- Closure
- Value at Risk
- Landmark
- Fire Station
- Hazard Tree
- Mobile Weather Unit
- Repeater
- Hazard
- Water Source
- IR Isolated Heat Source
- Pump
- Water Tank
- Completed Dozer Line
- Completed Hand Line
- Completed Mixed Construction Line
- Completed Road as Line
- Access or Improved Road
- Aerial Hazard
- Temporary Flight Restriction
- Contained
- IR Heat Perimeter
- Wildfire Daily Fire Perimeter
- FS Wilderness
- Bureau of Land Management (BLM)
- State



Div A/L

ROGUE RIVER - SISKIYOU
NATIONAL FORESTS



Airbus/USGS, NGA, NASA, CGIAR, NCEAS, NLS, NMA, Geodatastyreisen, GSA, GSI, and the GIS User Community