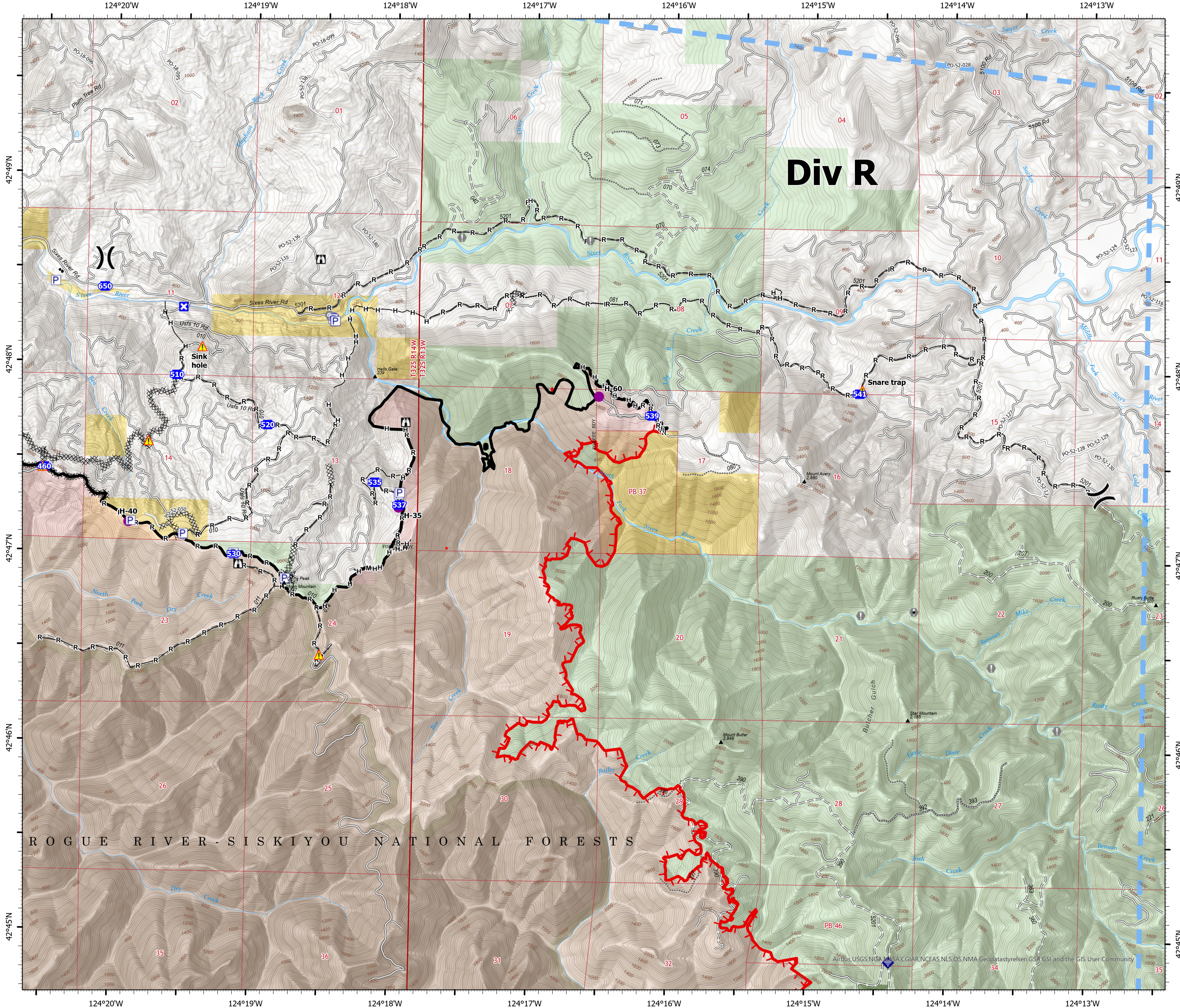


OPERATIONS

ANVIL DIV R
OR-RSF-000413
10/15/2023
22,170 ACRES AT 10/01/2023 2111



- Helispot
- Division Break
- Drop Point
- Closure
- Lookout
- Value at Risk
- Landmark
- Internet Access
- Hazard
- Water Source
- IR Isolated Heat Source
- Possible IR Heat Source
- Pump
- Water Tank
- Completed Dozer Line
- Completed Hand Line
- Completed Mixed Construction Line
- Completed Road as Line
- Access or Improved Road
- Temporary Flight Restriction
- Contained
- Uncontained
- IR Heat Perimeter
- Wildfire Daily Fire Perimeter
- FS Wilderness
- Bureau of Land Management (BLM)
- US Forest Service (USFS)



ROGUE RIVER - SISKIYOU NATIONAL FORESTS

Div R



0 1/4 1/2
Miles