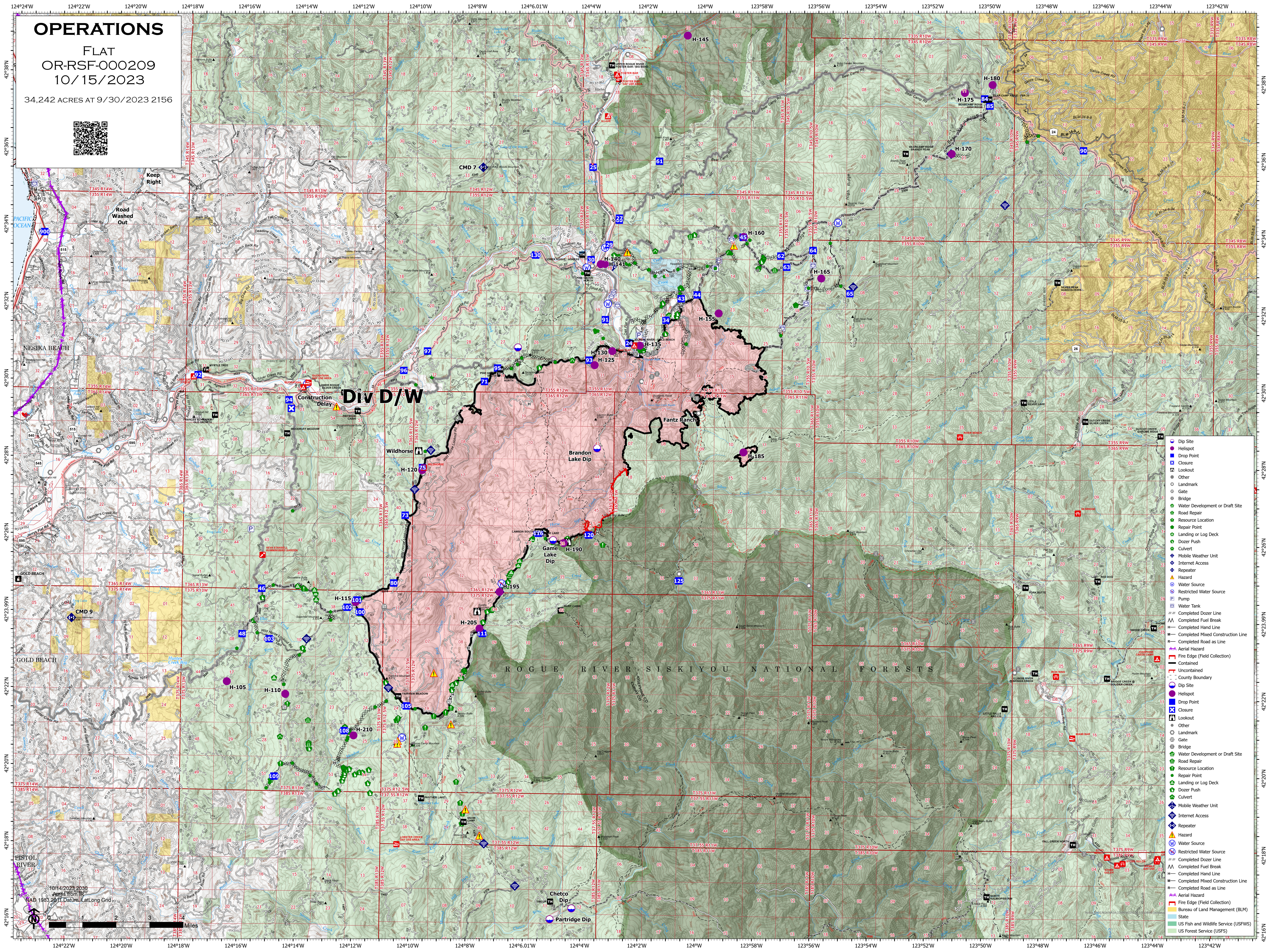


OPERATIONS

FLAT
OR-RSF-000209
10/15/2023

34,242 ACRES AT 9/30/2023 2156



Keep Right
Road Washed Out

DIV D/W

10/14/2023 2030
Ave 6 from 15
NAD 1983 2011 Datum, Lat/Long Grid
0 1 2 3 Miles

- Dip Site
- Helispot
- Drop Point
- Closure
- Lookout
- Other
- Landmark
- Gate
- Bridge
- Water Development or Draft Site
- Road Repair
- Resource Location
- Repair Point
- Landing or Log Deck
- Dozer Push
- Culvert
- Mobile Weather Unit
- Internet Access
- Repeater
- Hazard
- Water Source
- Restricted Water Source
- Pump
- Water Tank
- Completed Dozer Line
- Completed Fuel Break
- Completed Hand Line
- Completed Mixed Construction Line
- Completed Road as Line
- Aerial Hazard
- Fire Edge (Field Collection)
- Contained
- Uncontained
- County Boundary
- Dip Site
- Helispot
- Drop Point
- Closure
- Lookout
- Other
- Landmark
- Gate
- Bridge
- Water Development or Draft Site
- Road Repair
- Resource Location
- Repair Point
- Landing or Log Deck
- Dozer Push
- Culvert
- Mobile Weather Unit
- Internet Access
- Repeater
- Hazard
- Water Source
- Restricted Water Source
- Completed Dozer Line
- Completed Fuel Break
- Completed Hand Line
- Completed Mixed Construction Line
- Completed Road as Line
- Aerial Hazard
- Fire Edge (Field Collection)
- Bureau of Land Management (BLM)
- State
- US Fish and Wildlife Service (USFWS)
- US Forest Service (USFS)