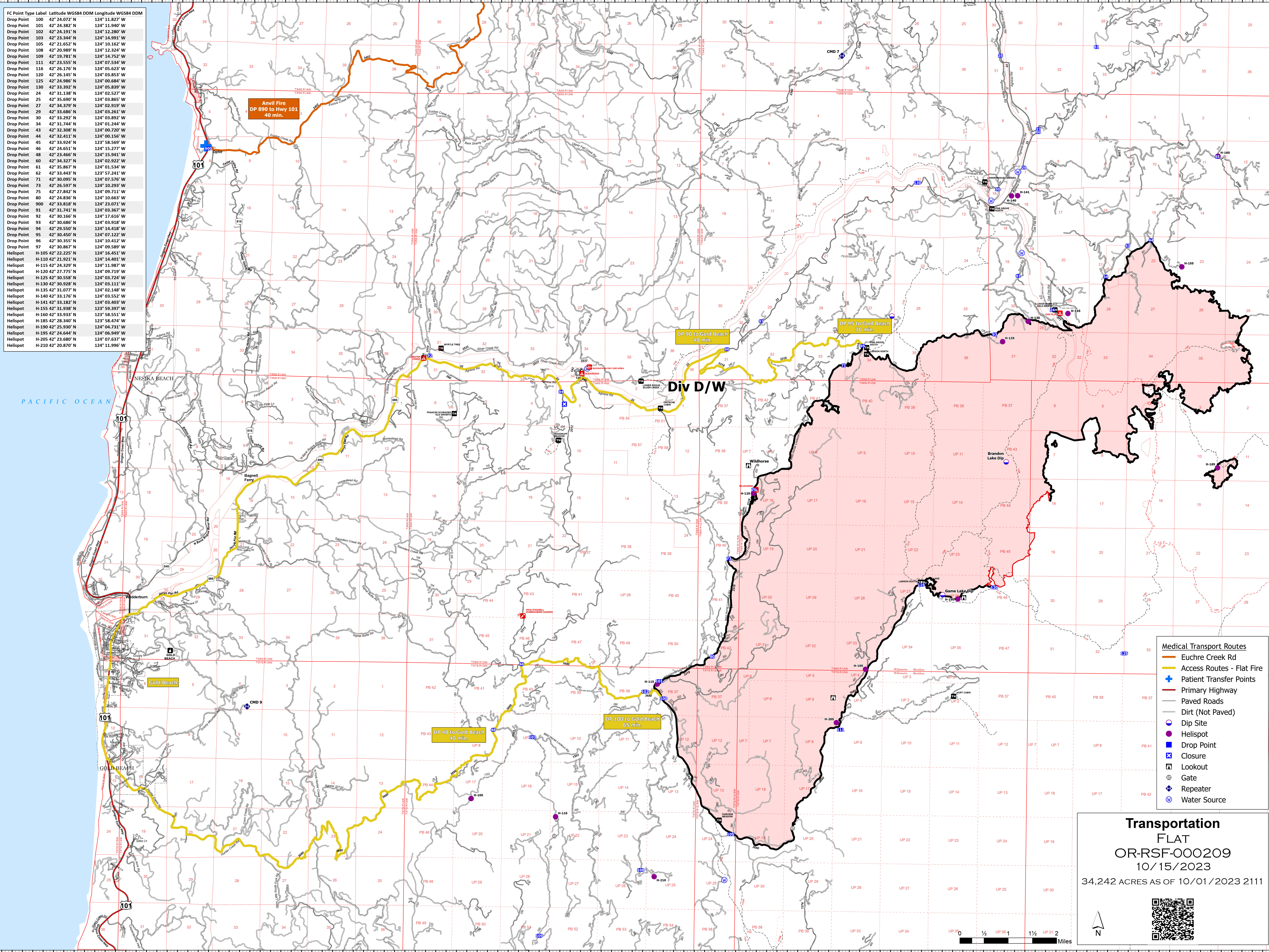


FC Point Type	Label	Latitude WGS84	DDM	Longitude WGS84	DDM
Drop Point	100	42° 24.072' N		124° 11.827' W	
Drop Point	101	42° 24.382' N		124° 11.942' W	
Drop Point	102	42° 24.191' N		124° 12.280' W	
Drop Point	103	42° 23.344' N		124° 14.991' W	
Drop Point	105	42° 21.652' N		124° 10.162' W	
Drop Point	108	42° 20.989' N		124° 12.324' W	
Drop Point	109	42° 19.781' N		124° 14.752' W	
Drop Point	111	42° 23.555' N		124° 07.594' W	
Drop Point	116	42° 26.176' N		124° 03.623' W	
Drop Point	120	42° 26.145' N		124° 03.853' W	
Drop Point	125	42° 24.986' N		124° 00.684' W	
Drop Point	130	42° 33.392' N		124° 05.839' W	
Drop Point	24	42° 31.138' N		124° 02.527' W	
Drop Point	25	42° 35.090' N		124° 03.865' W	
Drop Point	27	42° 34.379' N		124° 03.919' W	
Drop Point	29	42° 33.686' N		124° 03.261' W	
Drop Point	30	42° 33.292' N		124° 03.892' W	
Drop Point	34	42° 31.744' N		124° 01.244' W	
Drop Point	43	42° 32.308' N		124° 00.720' W	
Drop Point	44	42° 32.411' N		124° 00.156' W	
Drop Point	45	42° 33.924' N		123° 58.569' W	
Drop Point	46	42° 24.551' N		124° 15.277' W	
Drop Point	48	42° 23.466' N		124° 15.941' W	
Drop Point	60	42° 34.327' N		124° 02.922' W	
Drop Point	61	42° 35.867' N		124° 01.534' W	
Drop Point	62	42° 33.443' N		123° 57.241' W	
Drop Point	71	42° 30.095' N		124° 07.576' W	
Drop Point	73	42° 26.597' N		124° 10.293' W	
Drop Point	75	42° 27.842' N		124° 09.711' W	
Drop Point	80	42° 24.836' N		124° 10.663' W	
Drop Point	900	42° 33.818' N		124° 23.071' W	
Drop Point	91	42° 31.741' N		124° 03.367' W	
Drop Point	92	42° 30.166' N		124° 17.616' W	
Drop Point	93	42° 30.686' N		124° 03.918' W	
Drop Point	94	42° 29.550' N		124° 14.418' W	
Drop Point	95	42° 30.450' N		124° 07.122' W	
Drop Point	96	42° 30.355' N		124° 10.412' W	
Drop Point	97	42° 30.867' N		124° 09.589' W	
Helispot	H-105	42° 22.225' N		124° 16.451' W	
Helispot	H-110	42° 21.921' N		124° 14.401' W	
Helispot	H-115	42° 24.329' N		124° 11.987' W	
Helispot	H-120	42° 27.775' N		124° 09.719' W	
Helispot	H-125	42° 30.558' N		124° 03.724' W	
Helispot	H-130	42° 30.928' N		124° 03.111' W	
Helispot	H-135	42° 31.077' N		124° 02.148' W	
Helispot	H-140	42° 33.176' N		124° 03.552' W	
Helispot	H-141	42° 33.182' N		124° 03.403' W	
Helispot	H-155	42° 31.938' N		123° 58.397' W	
Helispot	H-160	42° 33.933' N		123° 58.551' W	
Helispot	H-185	42° 28.340' N		123° 58.474' W	
Helispot	H-190	42° 25.930' N		124° 04.731' W	
Helispot	H-195	42° 24.644' N		124° 06.949' W	
Helispot	H-205	42° 23.680' N		124° 07.637' W	
Helispot	H-210	42° 20.870' N		124° 11.996' W	



**Div D/W**

Anvil Fire  
DP 890 to Hwy 101  
40 min.

DP 90 to Gold Beach  
40 min.

DP 95 to Gold Beach  
70 min.

DP 48 to Gold Beach  
40 min.

DP 100 to Gold Beach  
65 min.

- Euchre Creek Rd
- Access Routes - Flat Fire
- Patient Transfer Points
- Primary Highway
- Paved Roads
- Dirt (Not Paved)
- Dip Site
- Helispot
- Drop Point
- Closure
- Lookout
- Gate
- Repeater
- Water Source

**Transportation**  
FLAT  
OR-RSF-000209  
10/15/2023  
34,242 ACRES AS OF 10/01/2023 2111