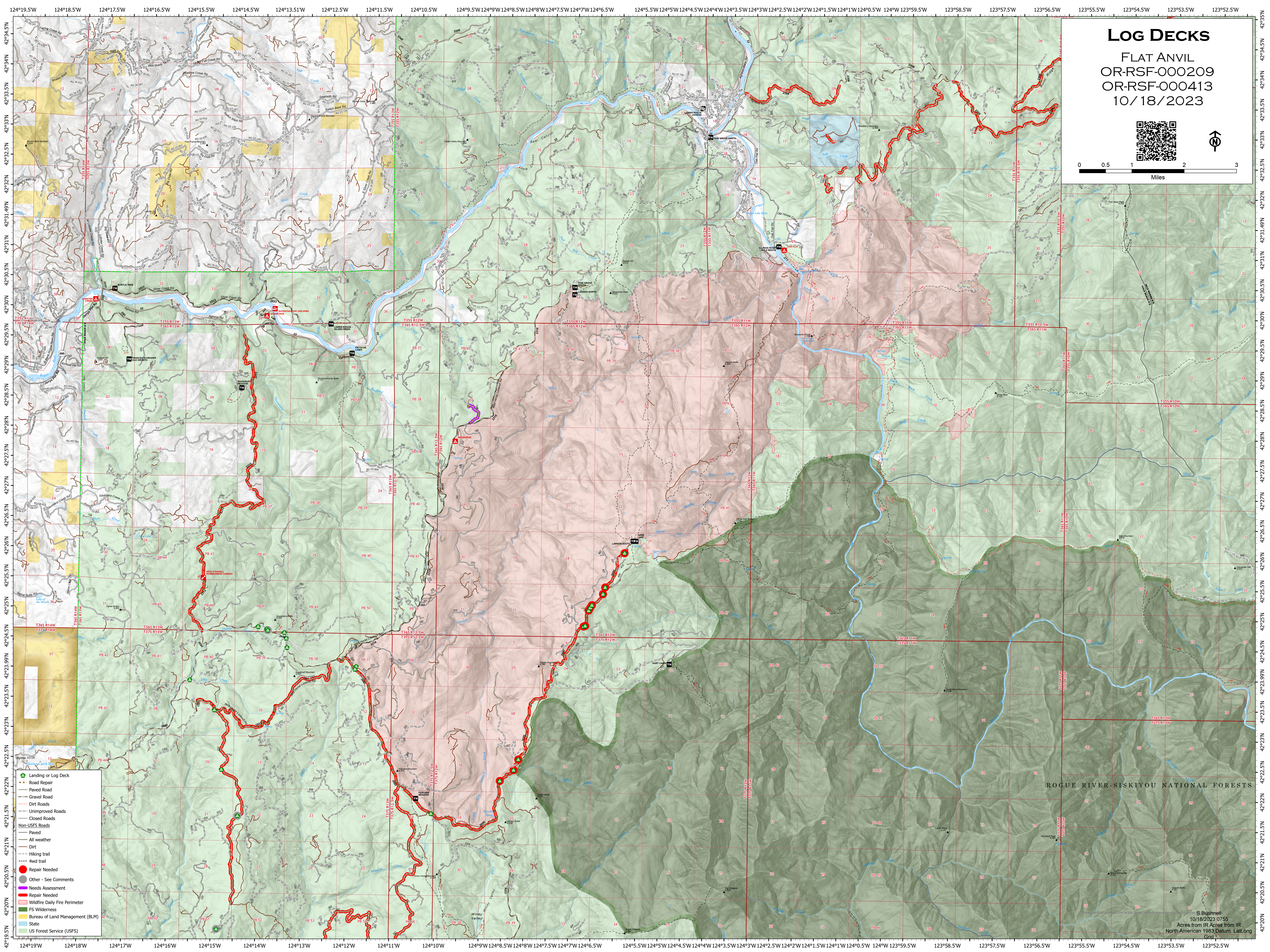
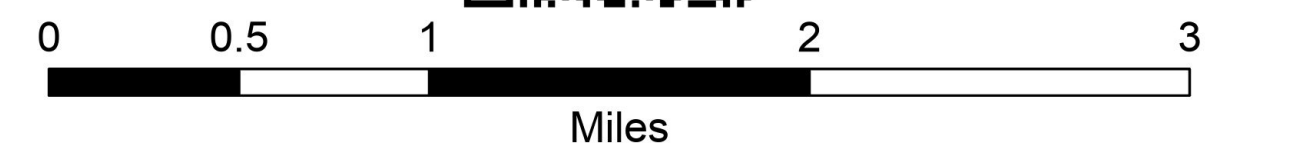


LOG DECKS

FLAT ANVIL
OR-RSF-000209
OR-RSF-000413
10/18/2023



- Landing or Log Deck
- Road Repair
- Paved Road
- Gravel Road
- Dirt Road
- Unimproved Roads
- Closed Roads
- Non-USFS Roads
- Paved
- All weather
- Dirt
- Hiking trail
- 4wd trail
- Repair Needed
- Other - See Comments
- Needs Assessment
- Repair Needed
- Wildlife Daily Fire Perimeter
- FS Wilderness
- Bureau of Land Management (BLM)
- State
- US Forest Service (USFS)

ROGUE RIVER-SISKIYOU NATIONAL FORESTS