

REPAIR

ANVIL DIV R

OR-RSF-000413

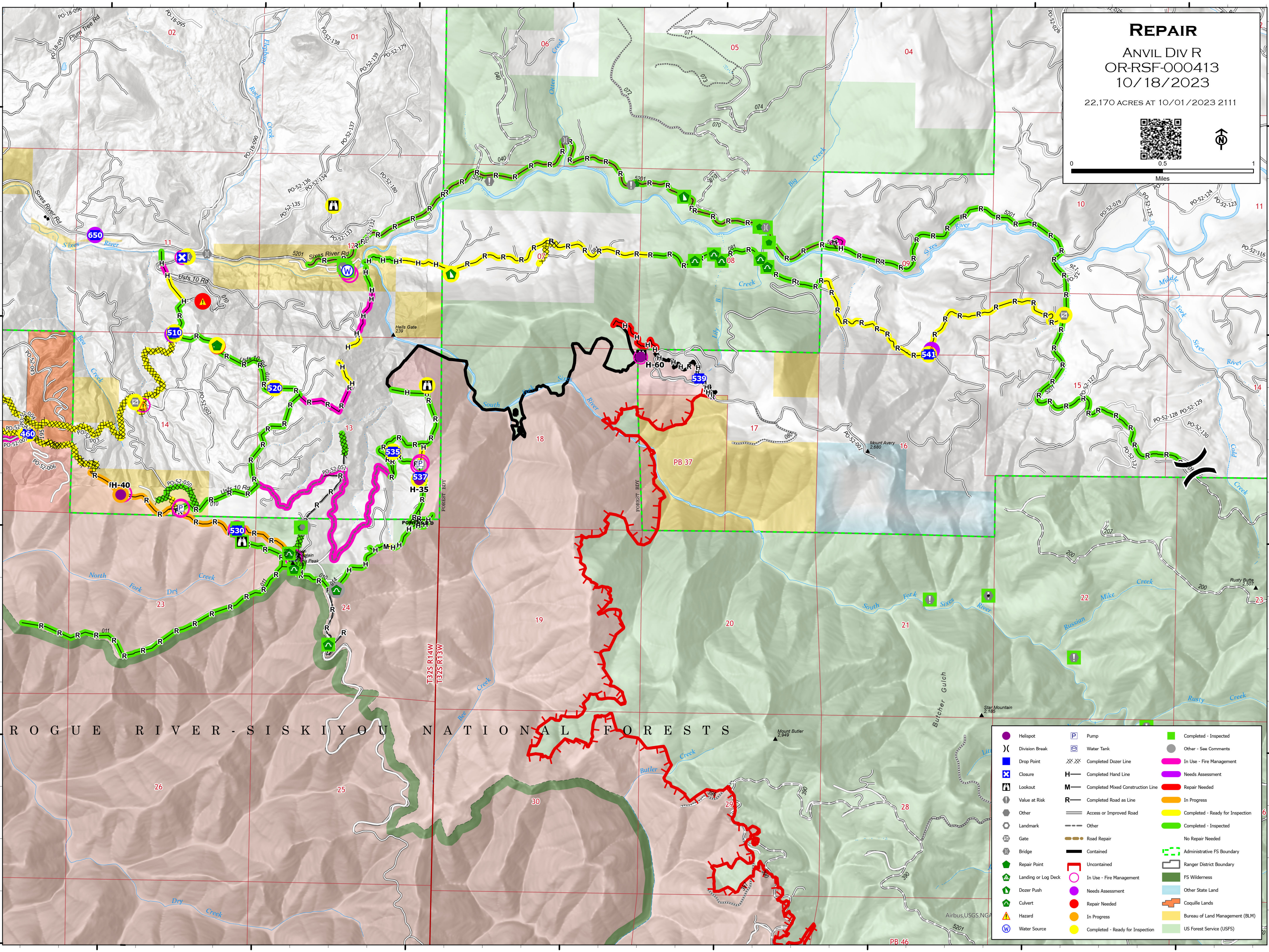
10/18/2023

22,170 ACRES AT 10/01/2023 2111






Miles



R O G U E R I V E R - S I S K I Y O U N A T I O N A L F O R E S T S

Helispot	Pump	Completed - Inspected
Division Break	Water Tank	Other - See Comments
Drop Point	Completed Dozer Line	In Use - Fire Management
Closure	Completed Hand Line	Needs Assessment
Lookout	Completed Mixed Construction Line	Repair Needed
Value at Risk	Completed Road as Line	In Progress
Other	Access or Improved Road	Completed - Ready for Inspection
Landmark	Other	Completed - Inspected
Gate	Road Repair	No Repair Needed
Bridge	Contained	Administrative FS Boundary
Repair Point	Uncontained	Ranger District Boundary
Landing or Log Deck	In Use - Fire Management	FS Wilderness
Dozer Push	Needs Assessment	Other State Land
Culvert	Repair Needed	Coquille Lands
Hazard	In Progress	Bureau of Land Management (BLM)
Water Source	Completed - Ready for Inspection	US Forest Service (USFS)