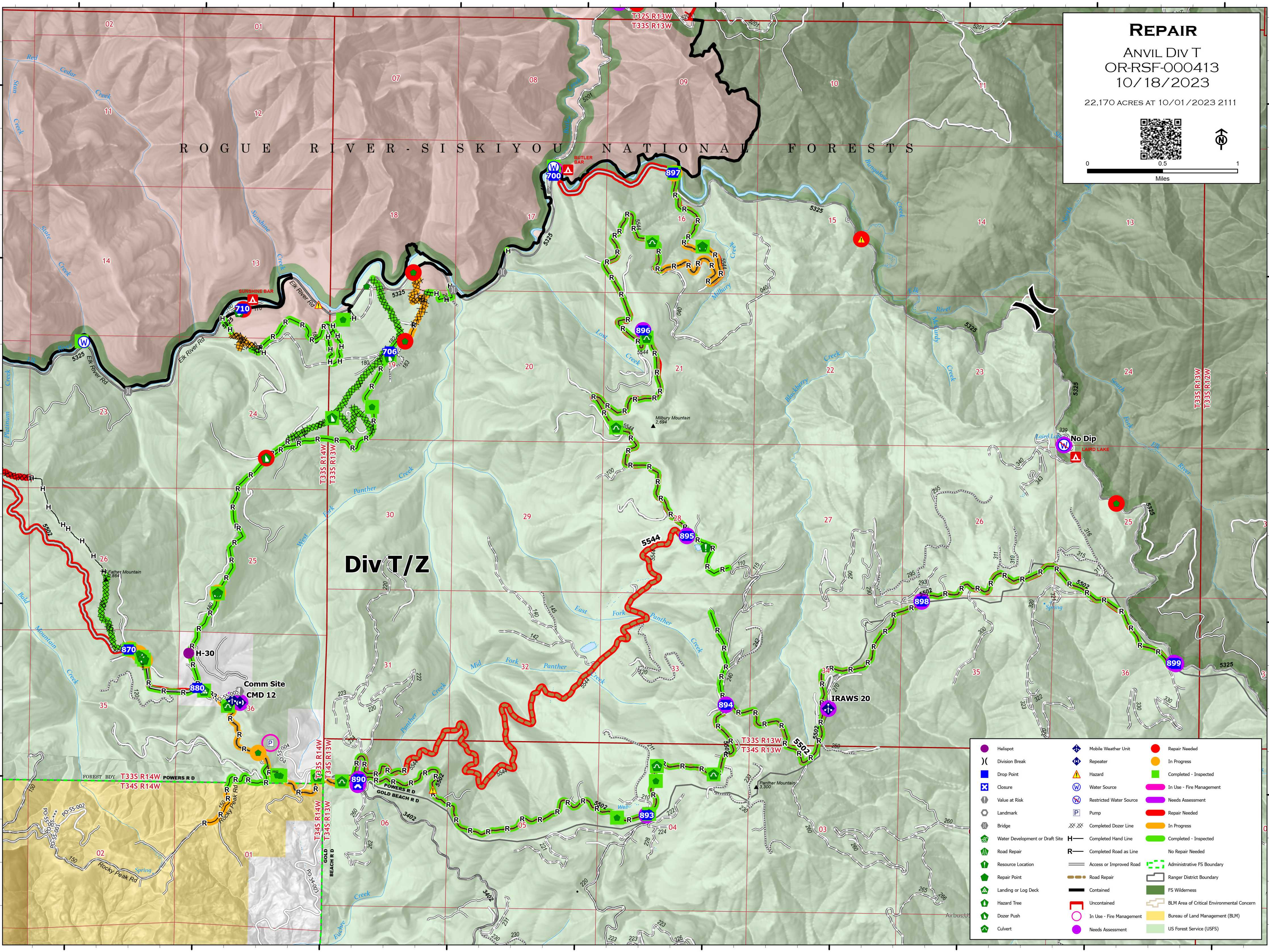


**REPAIR**  
 ANVIL DIV T  
 OR-RSF-000413  
 10/18/2023  
 22,170 ACRES AT 10/01/2023 2111



**Div T/Z**

	Heliport		Mobile Weather Unit		Repair Needed
	Drop Point		Repeater		In Progress
	Closure		Water Source		Completed - Inspected
	Value at Risk		Restricted Water Source		In Use - Fire Management
	Landmark		Pump		Needs Assessment
	Water Development or Draft Site		Completed Dozer Line		Repair Needed
	Road Repair		Completed Hand Line		In Progress
	Resource Location		Completed Road as Line		Completed - Inspected
	Repair Point		Access or Improved Road		No Repair Needed
	Landing or Log Deck		Contained		Administrative FS Boundary
	Hazard Tree		Uncontained		Ranger District Boundary
	Dozer Push		In Use - Fire Management		FS Wilderness
	Culvert		Needs Assessment		BLM Area of Critical Environmental Concern
					Bureau of Land Management (BLM)
					US Forest Service (USFS)