

# REPAIR

## ANVIL DIV R

### OR-RSF-000413

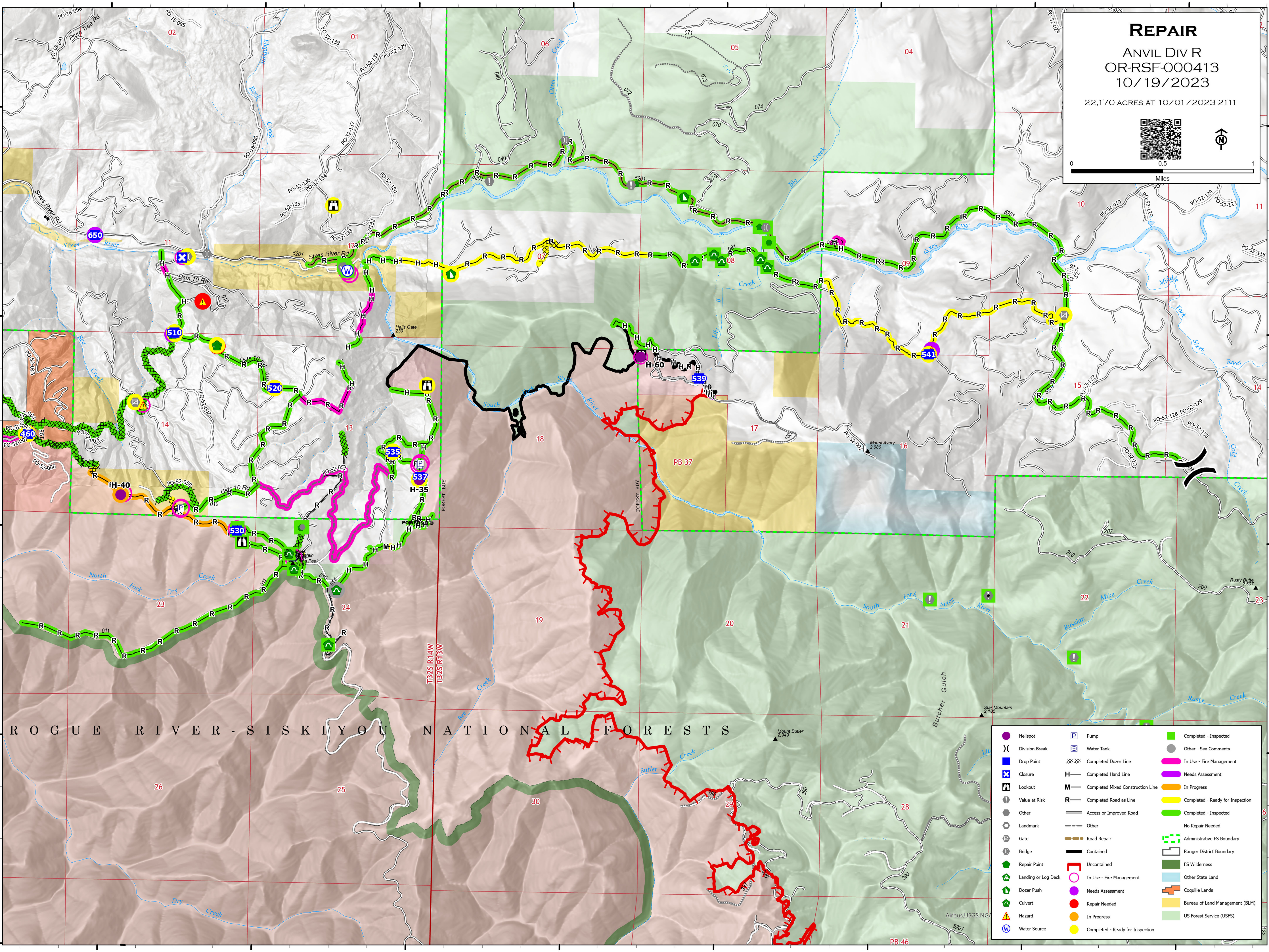
#### 10/19/2023

22,170 ACRES AT 10/01/2023 2111






Miles



R O G U E R I V E R - S I S K I Y O U N A T I O N A L F O R E S T S

Helispot	Pump	Completed - Inspected
Division Break	Water Tank	Other - See Comments
Drop Point	Completed Dozer Line	In Use - Fire Management
Closure	Completed Hand Line	Needs Assessment
Lookout	Completed Mixed Construction Line	In Progress
Value at Risk	Completed Road as Line	Completed - Ready for Inspection
Other	Access or Improved Road	Completed - Inspected
Landmark	Other	No Repair Needed
Gate	Road Repair	Administrative FS Boundary
Bridge	Contained	Ranger District Boundary
Repair Point	Uncontained	FS Wilderness
Landing or Log Deck	In Use - Fire Management	Other State Land
Dozer Push	Needs Assessment	Coquille Lands
Culvert	Repair Needed	Bureau of Land Management (BLM)
Hazard	In Progress	US Forest Service (USFS)
Water Source	Completed - Ready for Inspection	