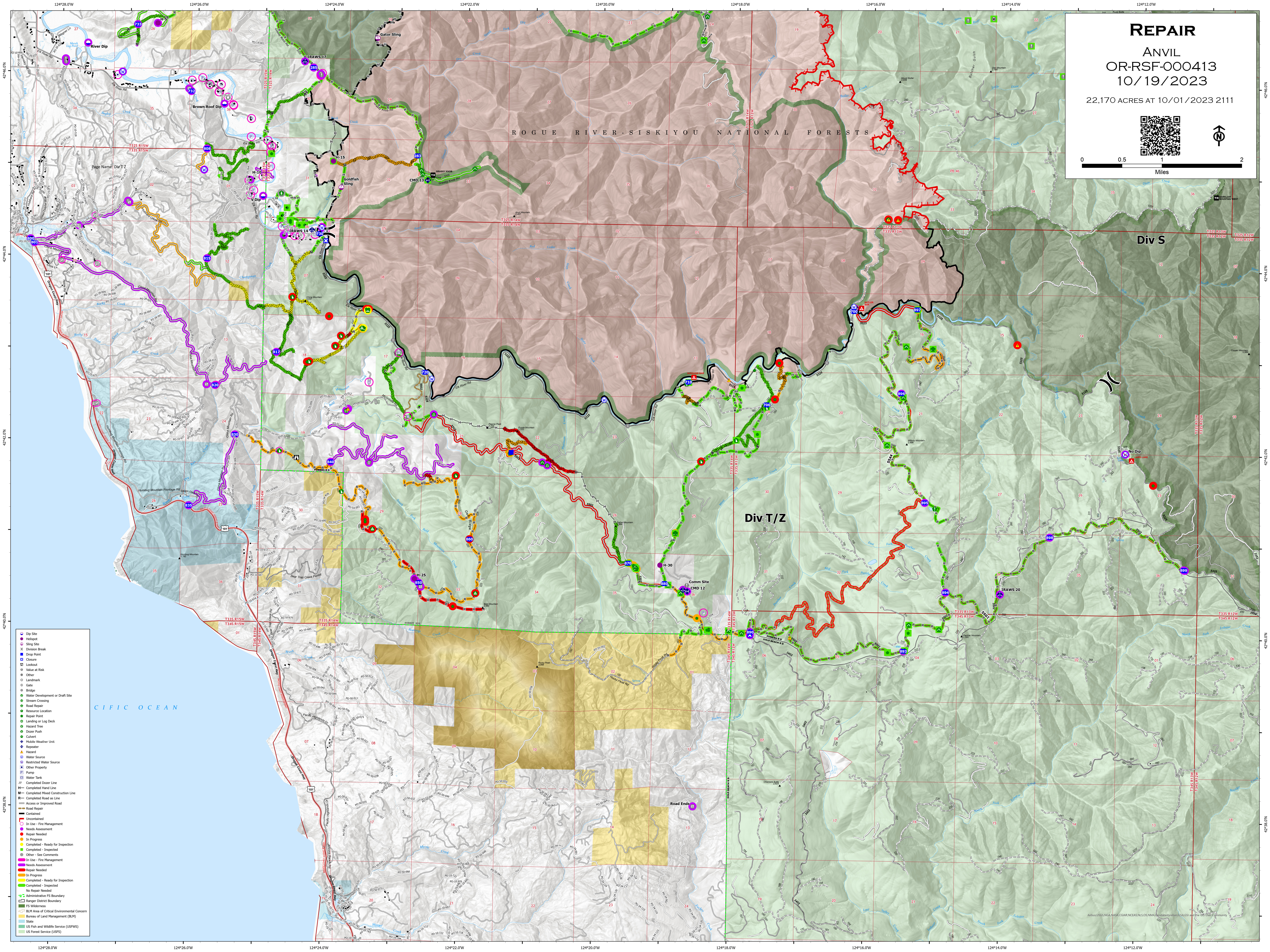
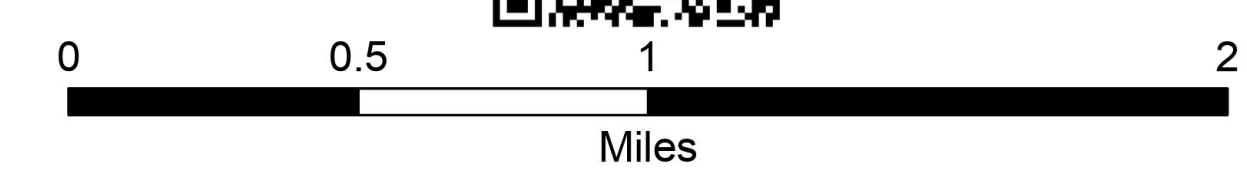
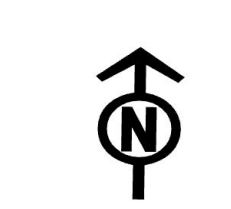


REPAIR

ANVIL
OR-RSF-000413
10/19/2023

22,170 ACRES AT 10/01/2023 2111



- Dip Site
- Helpline
- Sling Site
- Division Break
- Drip Point
- Closure
- Lookout
- Value at Risk
- Other
- Landmark
- Gate
- Bridge
- Water Development or Draft Site
- Stream Crossing
- Road Repair
- Reservoir Location
- Repair Point
- Landing or Log Deck
- Hazard Tree
- Deer Path
- Culvert
- Public Weather Unit
- Repeater
- Hazard
- Water Source
- Restricted Water Source
- Other Property
- Pump
- Water Tank
- Completed Dozer Line
- Completed Hand Line
- M - Completed Mixed Construction Line
- R - Completed Road as Line
- Access or Improved Road
- Road Repair
- Contained
- Uncontained
- In Use - Fire Management
- Needs Assessment
- Repair Needed
- In Progress
- Completed - Ready for Inspection
- Completed - Inspected
- Other - See Comments
- In Use - Fire Management
- Needs Assessment
- Repair Needed
- In Progress
- Completed - Ready for Inspection
- Completed - Inspected
- No Repair Needed
- Administrative FS Boundary
- Reger District Boundary
- FS Wilderness
- BLM Area of Critical Environmental Concern
- Bureau of Land Management (BLM)
- State
- US Fish and Wildlife Service (USFWS)
- US Forest Service (USFS)