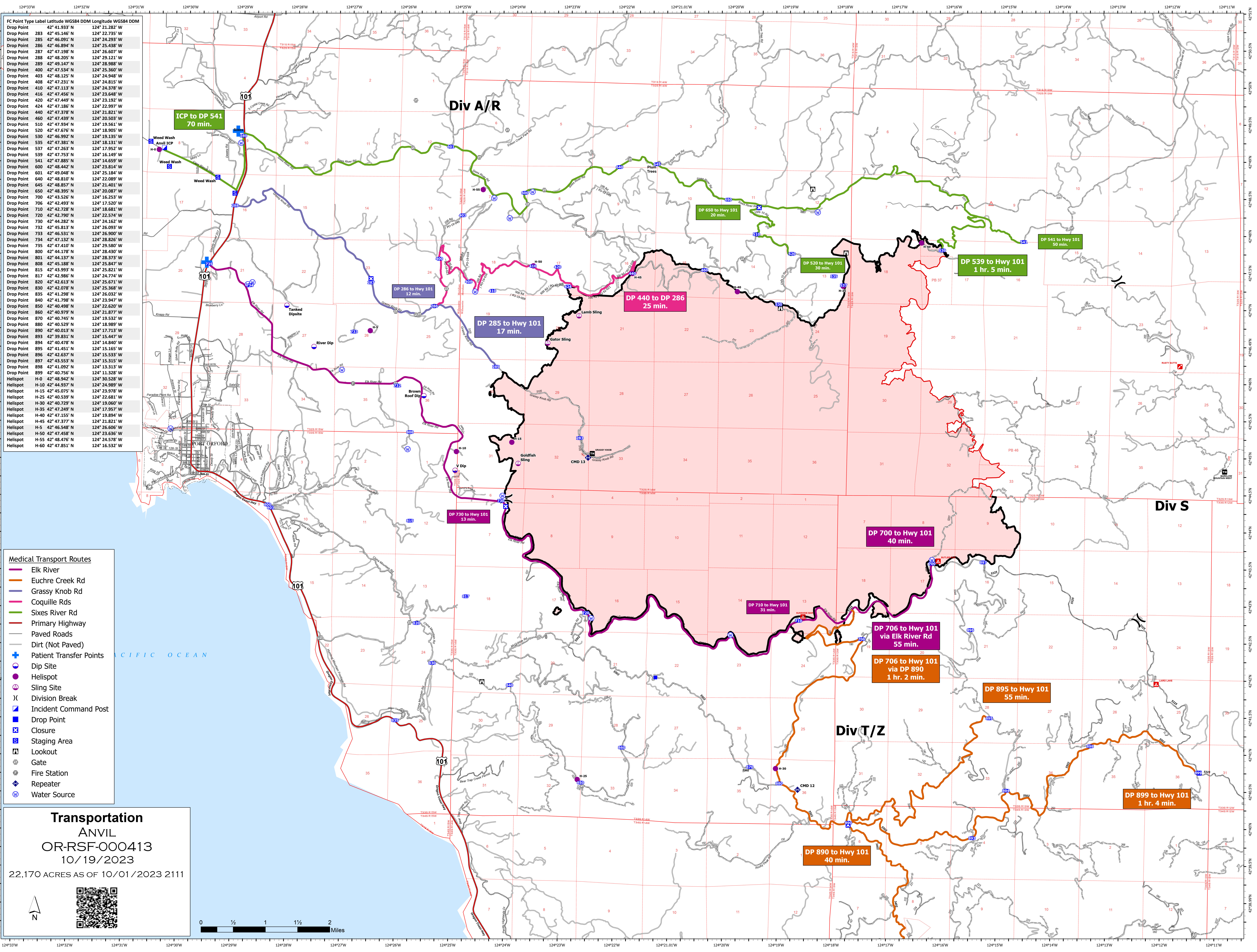


FC Point	Type	Label	Latitude WGS84 DDM	Longitude WGS84 DDM
Drop Point	283	42° 45.146' N	124° 22.735' W	
Drop Point	285	42° 46.091' N	124° 24.293' W	
Drop Point	286	42° 46.894' N	124° 25.438' W	
Drop Point	287	42° 47.198' N	124° 26.607' W	
Drop Point	288	42° 48.205' N	124° 28.121' W	
Drop Point	289	42° 49.147' N	124° 29.989' W	
Drop Point	400	42° 47.534' N	124° 25.960' W	
Drop Point	403	42° 48.125' N	124° 24.948' W	
Drop Point	408	42° 47.231' N	124° 24.815' W	
Drop Point	410	42° 47.113' N	124° 24.378' W	
Drop Point	416	42° 47.456' N	124° 23.648' W	
Drop Point	420	42° 47.448' N	124° 23.159' W	
Drop Point	424	42° 47.186' N	124° 22.997' W	
Drop Point	440	42° 47.378' N	124° 21.821' W	
Drop Point	460	42° 47.439' N	124° 20.503' W	
Drop Point	510	42° 47.934' N	124° 19.561' W	
Drop Point	520	42° 47.676' N	124° 18.905' W	
Drop Point	530	42° 46.992' N	124° 19.135' W	
Drop Point	535	42° 47.381' N	124° 18.133' W	
Drop Point	537	42° 47.263' N	124° 17.952' W	
Drop Point	539	42° 47.753' N	124° 16.149' W	
Drop Point	541	42° 47.885' N	124° 14.659' W	
Drop Point	600	42° 48.442' N	124° 23.814' W	
Drop Point	601	42° 49.048' N	124° 25.184' W	
Drop Point	640	42° 48.810' N	124° 22.089' W	
Drop Point	645	42° 48.557' N	124° 21.401' W	
Drop Point	650	42° 48.395' N	124° 20.087' W	
Drop Point	700	42° 43.526' N	124° 16.253' W	
Drop Point	706	42° 42.493' N	124° 17.520' W	
Drop Point	710	42° 42.728' N	124° 18.681' W	
Drop Point	720	42° 42.790' N	124° 22.574' W	
Drop Point	730	42° 44.282' N	124° 24.162' W	
Drop Point	732	42° 45.813' N	124° 26.089' W	
Drop Point	734	42° 46.531' N	124° 26.900' W	
Drop Point	734	42° 47.132' N	124° 28.826' W	
Drop Point	735	42° 47.410' N	124° 29.580' W	
Drop Point	800	42° 44.178' N	124° 28.430' W	
Drop Point	801	42° 44.137' N	124° 28.373' W	
Drop Point	808	42° 45.188' N	124° 25.847' W	
Drop Point	815	42° 43.993' N	124° 25.821' W	
Drop Point	817	42° 42.986' N	124° 24.774' W	
Drop Point	820	42° 42.613' N	124° 25.671' W	
Drop Point	830	42° 42.078' N	124° 25.368' W	
Drop Point	835	42° 41.298' N	124° 26.032' W	
Drop Point	840	42° 41.798' N	124° 23.947' W	
Drop Point	850	42° 40.498' N	124° 22.620' W	
Drop Point	850	42° 40.979' N	124° 21.877' W	
Drop Point	870	42° 40.745' N	124° 19.532' W	
Drop Point	880	42° 40.529' N	124° 18.989' W	
Drop Point	890	42° 40.013' N	124° 17.713' W	
Drop Point	893	42° 39.831' N	124° 15.447' W	
Drop Point	894	42° 40.478' N	124° 14.840' W	
Drop Point	895	42° 41.451' N	124° 15.165' W	
Drop Point	896	42° 42.637' N	124° 15.533' W	
Drop Point	897	42° 43.553' N	124° 15.315' W	
Drop Point	898	42° 41.092' N	124° 13.313' W	
Drop Point	899	42° 40.756' N	124° 11.328' W	
Helispot	H-0	42° 48.942' N	124° 30.528' W	
Helispot	H-10	42° 44.937' N	124° 24.989' W	
Helispot	H-15	42° 45.075' N	124° 23.978' W	
Helispot	H-25	42° 40.539' N	124° 22.681' W	
Helispot	H-30	42° 40.729' N	124° 19.060' W	
Helispot	H-35	42° 47.249' N	124° 17.957' W	
Helispot	H-40	42° 47.155' N	124° 19.894' W	
Helispot	H-45	42° 47.377' N	124° 21.821' W	
Helispot	H-5	42° 46.548' N	124° 26.606' W	
Helispot	H-50	42° 47.458' N	124° 23.636' W	
Helispot	H-55	42° 48.476' N	124° 24.578' W	
Helispot	H-60	42° 47.851' N	124° 16.532' W	

- Medical Transport Routes**
- Elk River
  - Euchre Creek Rd
  - Grassy Knob Rd
  - Coquille Rds
  - Sixes River Rd
  - Primary Highway
  - Paved Roads
  - Dirt (Not Paved)
  - + Patient Transfer Points
  - Dip Site
  - Helispot
  - ⊗ Sling Site
  - ⌘ Division Break
  - ⊠ Incident Command Post
  - Drop Point
  - ⊠ Closure
  - ⊠ Staging Area
  - ⊠ Lookout
  - ⊠ Gate
  - ⊠ Fire Station
  - ⊠ Repeater
  - ⊠ Water Source

**Transportation**  
**ANVIL**  
**OR-RSF-000413**  
 10/19/2023  
 22,170 ACRES AS OF 10/01/2023 2111



**Div A/R**

**Div S**

**Div T/Z**