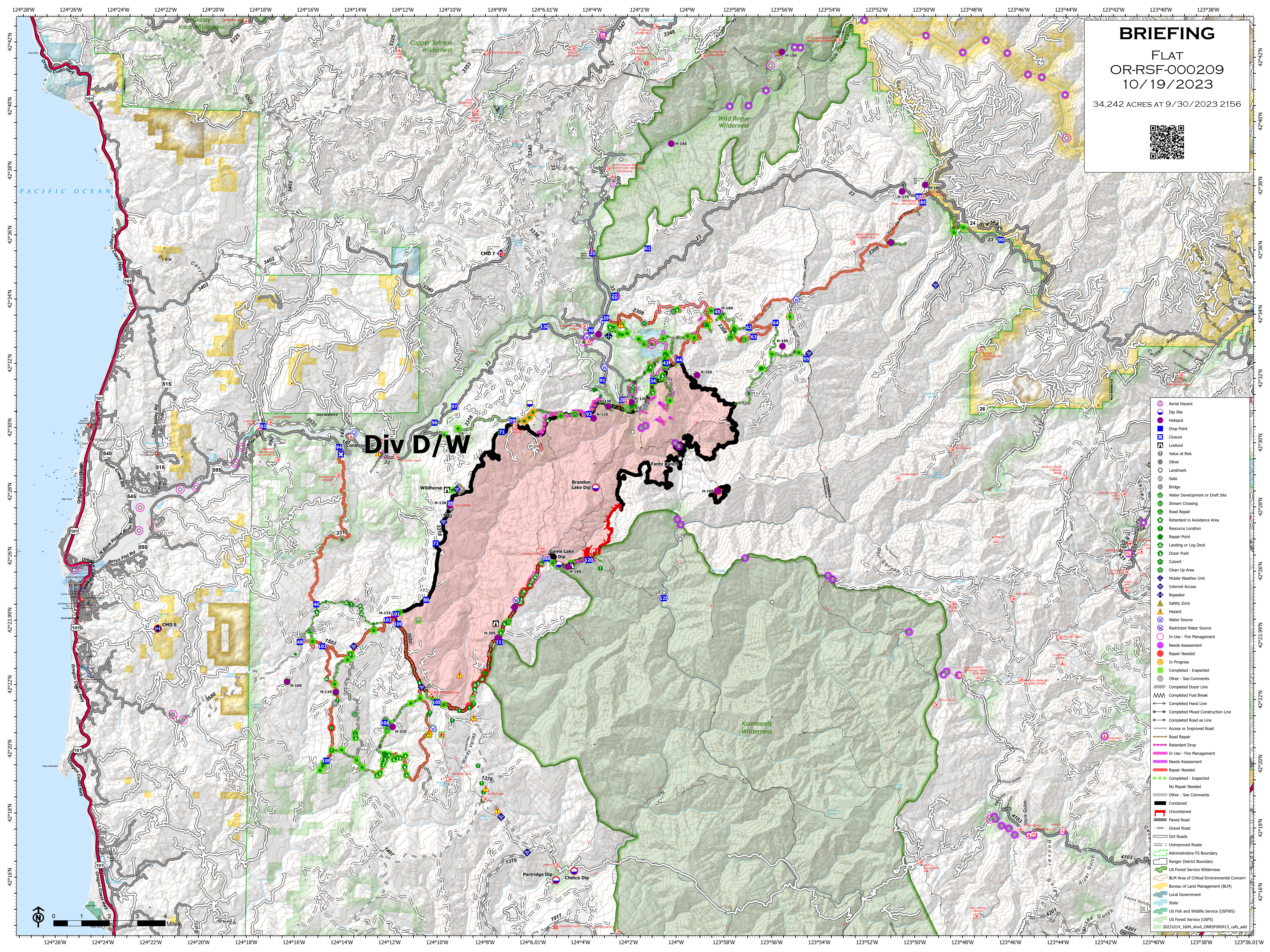


# BRIEFING

FLAT  
OR-RSF-000209  
10/19/2023

34,242 ACRES AT 9/30/2023 2156



## Div D/W

- Aerial Hazard
- Dip Site
- Hellspot
- Drop Point
- Closure
- Lookout
- Value at Risk
- Other
- Landmark
- Gate
- Bridge
- Water Development or Draft Site
- Stream Crossing
- Road Repair
- Retardant in Avoidance Area
- Resource Location
- Repair Point
- Landing or Log Deck
- Dozer Push
- Culvert
- Clean Up Area
- Mobile Weather Unit
- Internet Access
- Repeater
- Safety Zone
- Hazard
- Water Source
- Restricted Water Source
- In Use - Fire Management
- Needs Assessment
- Repair Needed
- In Progress
- Completed - Inspected
- Other - See Comments
- Completed Dozer Line
- Completed Hand Line
- Completed Mixed Construction Line
- Completed Road as Line
- Access or Improved Road
- Road Repair
- Retardant Drop
- In Use - Fire Management
- Needs Assessment
- Repair Needed
- Completed - Inspected
- No Repair Needed
- Other - See Comments
- Contained
- Uncontained
- Paved Road
- Gravel Road
- Dirt Roads
- Unimproved Roads
- Administrative FS Boundary
- Ranger District Boundary
- US Forest Service Wilderness
- BLM Area of Critical Environmental Concern
- Bureau of Land Management (BLM)
- Local Government
- State
- US Fish and Wildlife Service (USFWS)
- US Forest Service (USFS)
- 20231014\_1604\_Aerial\_ORRSF000413\_usfs\_add

