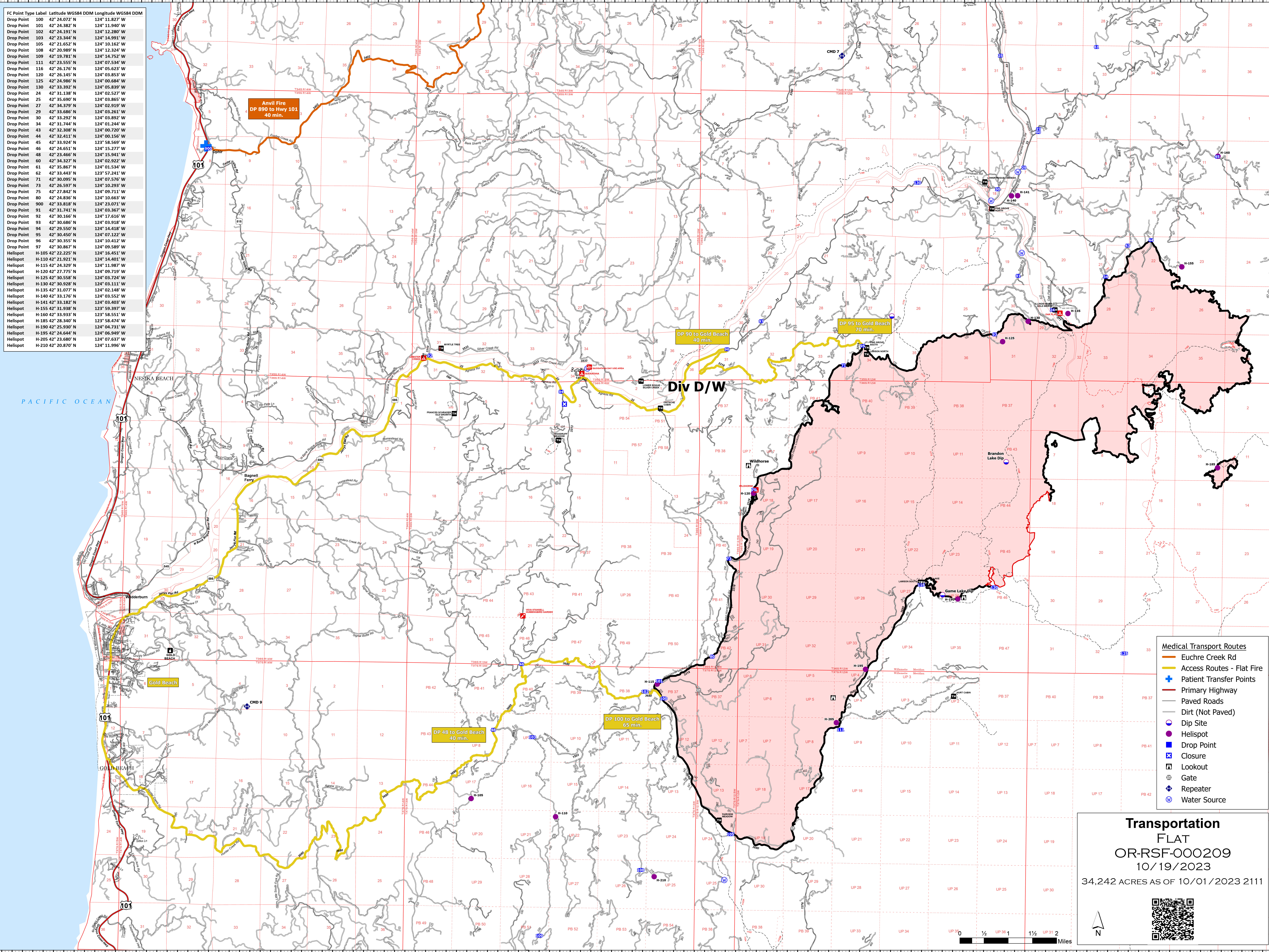


FC Point Type Label	Latitude WGS84 DDM	Longitude WGS84 DDM
Drop Point 100	42° 24.072' N	124° 11.827' W
Drop Point 101	42° 24.382' N	124° 11.942' W
Drop Point 102	42° 24.191' N	124° 12.280' W
Drop Point 103	42° 23.344' N	124° 14.991' W
Drop Point 105	42° 21.652' N	124° 10.162' W
Drop Point 108	42° 20.989' N	124° 12.324' W
Drop Point 109	42° 19.781' N	124° 14.752' W
Drop Point 111	42° 23.555' N	124° 07.594' W
Drop Point 116	42° 26.176' N	124° 03.623' W
Drop Point 120	42° 26.145' N	124° 03.853' W
Drop Point 125	42° 24.986' N	124° 00.684' W
Drop Point 130	42° 33.392' N	124° 05.839' W
Drop Point 24	42° 31.138' N	124° 02.527' W
Drop Point 25	42° 35.090' N	124° 03.865' W
Drop Point 27	42° 34.379' N	124° 03.919' W
Drop Point 29	42° 33.686' N	124° 03.261' W
Drop Point 30	42° 33.292' N	124° 03.892' W
Drop Point 34	42° 31.744' N	124° 01.244' W
Drop Point 43	42° 32.308' N	124° 00.720' W
Drop Point 44	42° 32.411' N	124° 00.156' W
Drop Point 45	42° 33.924' N	123° 58.569' W
Drop Point 46	42° 24.551' N	124° 15.277' W
Drop Point 48	42° 23.466' N	124° 15.941' W
Drop Point 60	42° 34.327' N	124° 02.922' W
Drop Point 61	42° 35.867' N	124° 01.534' W
Drop Point 62	42° 33.443' N	123° 57.241' W
Drop Point 71	42° 30.095' N	124° 07.576' W
Drop Point 73	42° 26.597' N	124° 10.203' W
Drop Point 75	42° 27.842' N	124° 09.711' W
Drop Point 80	42° 24.836' N	124° 10.663' W
Drop Point 900	42° 33.818' N	124° 23.071' W
Drop Point 91	42° 31.741' N	124° 03.367' W
Drop Point 92	42° 30.166' N	124° 17.616' W
Drop Point 93	42° 30.686' N	124° 03.918' W
Drop Point 94	42° 29.550' N	124° 14.418' W
Drop Point 95	42° 30.450' N	124° 07.122' W
Drop Point 96	42° 30.355' N	124° 10.412' W
Drop Point 97	42° 30.867' N	124° 09.589' W
Helispot H-105	42° 22.225' N	124° 16.451' W
Helispot H-110	42° 21.921' N	124° 14.401' W
Helispot H-115	42° 24.329' N	124° 11.987' W
Helispot H-120	42° 27.775' N	124° 09.719' W
Helispot H-125	42° 30.558' N	124° 03.724' W
Helispot H-130	42° 30.928' N	124° 03.111' W
Helispot H-135	42° 31.077' N	124° 02.148' W
Helispot H-140	42° 33.176' N	124° 03.552' W
Helispot H-141	42° 33.182' N	124° 03.403' W
Helispot H-155	42° 31.938' N	123° 59.397' W
Helispot H-160	42° 33.933' N	123° 58.551' W
Helispot H-185	42° 28.340' N	123° 58.474' W
Helispot H-190	42° 25.930' N	124° 04.731' W
Helispot H-195	42° 24.644' N	124° 06.949' W
Helispot H-205	42° 23.680' N	124° 07.637' W
Helispot H-210	42° 20.870' N	124° 11.996' W



Div D/W

- Euchre Creek Rd
- Access Routes - Flat Fire
- + Patient Transfer Points
- Primary Highway
- Paved Roads
- Dirt (Not Paved)
- Dip Site
- Helispot
- Drop Point
- ⊠ Closure
- ⊠ Lookout
- ⊠ Gate
- ⊠ Repeater
- ⊠ Water Source

Transportation
FLAT
OR-RSF-000209
10/19/2023
34,242 ACRES AS OF 10/01/2023 2111

1/4 1/2 1 1 1/2 Miles

N