

INCIDENT ACTION PLAN

Flat / Anvil Fires

Wednesday, October 11, 2023
0700-1900 Operational Period

FLAT FIRE
OR-RSF-000209
P6 QDL4 (0610)

ANVIL FIRE
OR-RSF-000413
P6 QLT0 (0610)



Briefing Link
IAP
Maps
Check In
Finance Forms

For “After Hours” Emergencies:
OUTSIDE ANVIL CAMP: Call 911, then contact Communications at (971) 713-0379.
IN CAMP: Call Communications at (971) 713-0379, or go to the Medical Unit (staffed 24-hours)

NOTES:

This page intentionally left blank.



INCIDENT OBJECTIVES (ICS 202)

1. Incident Name:	2. Operational Period: DAY	
FLAT/ANVIL	Date/Time From: 10/11/2023 0700 WED	Date/Time To: 10/11/2023 1900 WED
3. Objective(s):		
Control Objectives:		
<p>-Identify, evaluate and reduce risks to firefighters and the public through the use of Deliberate Risk Assessment process.</p> <p>-Utilize full suppression strategy to Implement strategic actions that have the highest probability of success to mitigate adverse impacts to values at risk, including:</p> <p>Anvil Fire: The communities of Port Orford, Sixes, Elk River, Elk River Fish Hatchery, Coquille Tribal Forest, private timber lands, and other dispersed structures and developments.</p> <p>Flat Fire: The communities of Oak Flat, Agness, Illahe, state and private timber lands, and other dispersed structures and developments.</p> <p>Wild and Scenic Rivers: Rogue River, Silver Creek, Illinois River, and Elk River.</p> <p>Wilderness: Grassy Knob, Copper Salmon, and Kamliopsis.</p> <p>-Implement suppression repair as identified in approved Suppression Repair Plans.</p> <p>-Provide initial Attack for new wildland fire starts as requested by the host agencies.</p>		
Management Objectives:		
<p>-Treat each other with dignity and respect and act in a professional manner while on the fire and in the community.</p> <p>-Work closely with Agency Administrators and lead Resource Advisor to plan and implement actions that protect sensitive natural and cultural resources at risk from suppression actions.</p> <p>-Maintain and enhance relationships with cooperators, stakeholders, landowners, and communities by providing accurate and timely information.</p> <p>-Manage cost commensurate with values at risk and maintain fiscal accountability.</p>		
4. Operational Period Command Emphasis:		
Implement strategies and tactics to achieve incident objectives with the least amount of risk practical and the highest probability of success.		
General Situational Awareness:		
Transition day is a watch-out situation. Ensure that you understand your chain of command and who you are working for. New leadership will be in place, take the time to share your knowledge with those that are new to the incident. Review the Task/Purpose/End State to ensure work assignments are aligned with leader's intent.		
5. Site Safety Plan Required? Yes <input type="checkbox"/> No <input checked="" type="checkbox"/>		
Approved Site Safety Plan(s) Located		
6. Incident Action Plan (the items checked below are included in this Incident Action Plan):		
<input checked="" type="checkbox"/> ICS 202 <input checked="" type="checkbox"/> ICS 203 <input checked="" type="checkbox"/> ICS 204 <input checked="" type="checkbox"/> ICS 205 <input type="checkbox"/> ICS 205A <input checked="" type="checkbox"/> ICS 206	<input type="checkbox"/> ICS 207 <input type="checkbox"/> ICS 208 <input checked="" type="checkbox"/> ICS 220 <input checked="" type="checkbox"/> Map/Chart <input checked="" type="checkbox"/> Weather Forecast/Tides/Currents	Other Attachments: <input checked="" type="checkbox"/> HR MESSAGE <input checked="" type="checkbox"/> EMERGENCY PLAN <input type="checkbox"/> _____ <input type="checkbox"/> _____
7. Prepared by: JILL JOHNSON	Position/Title: PSC2	Signature: <i>Jill Johnson</i>
8. Approved by Incident Commander:	Name: BOB SHINDELAR	Signature: <i>Bob Shindelar</i>
ICS 202	IAP Page	Date/Time: 10/10/2023 2000

ORGANIZATION ASSIGNMENT LIST (ICS 203)

1. Incident Name:		2. Operational Period: DAY	
FLAT/ANVIL		Date/Time From: 10/11/2023 0700	WED
		Date/Time To: 10/11/2023 1900	WED
3. Incident Commander(s) and Command Staff:			
IC/UC	BOB SHINDELAR JEFF BOUSCHOR (T)	6. Logistics Section:	
DEPUTY	JEFF DIMKE	CHIEF	KEVIN HAUGHTON THAD FRATER (T)
SAFETY OFFICER	TROY CORN; JACK CATES COUGAN CAROTHERS (T)	DEPUTY	WHIT SPENCER
INFORMATION OFFICER	JOEL BRUMM	SUPPLY UNIT	JOHN KAUPA STEVEN HUANG
LIAISON OFFICER	SCOTT CRAWFORD	FACILITIES UNIT	JASON ARCHIBALD
HUMAN RESOURCE SPECIALIST	SUSIE MANEZES	GROUND SUPPORT UNIT	TOM FORTIN
		COMMUNICATIONS UNIT	MISSY PARKER
		MEDICAL UNIT	DIANA BRAUN
		FOOD UNIT	KAREN HAUTER
4. Agency/Organization Representative(s):			
Agency/Organization	Name		
ROGUE-SISKIYOU NF AA	JAKE WYNN STEVE KUENNEN	7. Operations Section:	
COOS FPA AA	MIKE ROBISON DERWIN BOGGS	FIELD OPS SECTION CHIEF	AARON ROWE
COOS BAY BLM AA	STEVE LYDICK; ERIC BAXTER VALERIE LENHARTZEN (T)	PLANNING OPS SECTION CHIEF	KURT RANTA MIKE DAVIS (T)
COQUILLE TRIBE	ROBIN HARKINS		
INCIDENT BUSINESS ADVISOR	TORIE KOLLER	DIVISION/GROUP	A/L FIDEL VERDUZCO
LEAD READ	COURTYNEY ROWE JEREMY GOODING (T)	DIVISION/GROUP	R BOB HINDS
		DIVISION/GROUP	S UNSTAFFED
		DIVISION/GROUP	T/Z KEN FOSS
		DIVISION/GROUP	CONTINGENCY SAM STEINSHOUER
		DIVISION/GROUP	D/W GREG ANDERSON
		DIVISION/GROUP	CFPA DAVE BROWN CHRIS SIEBRASSE (T)
5. Planning Section:			
CHIEF	JILL JOHNSON		
DEPUTY	NATHAN JEFFRIES	7b. Air Operations Branch:	
RESOURCES UNIT	SUE PUDDY JENNIFER NORTON (T)	AIR SUPPORT SUPERVISOR	MATT KAMPF (T)
SITUATION UNIT	STEPHEN SEWELL (T)	8. Finance/Administration Section:	
DOCUMENTATION UNIT	DEIDRE SMITH (VIRTUAL)	CHIEF	CHRISTINA GOEBEL STEVE CROW (T)
DEMOBILIZATION UNIT	MIKE HESTON (VIRTUAL)	DEPUTY	CHERI FULLER
FIRE BEHAVIOR ANALYST	STEVE ZIEL	COST UNIT	KAY HIGH (VIRTUAL)
GIS SPECIALIST	SHAWN BUSHNELL ; ANDY KIRSCH BRIGIT ANDERSON (T)	PROCUREMENT UNIT	TODD POWELL MARK BOHNET
TECHNOLOGY SUPPORT SPECIALIST	GEORGE JENKINS; VONIETA WOODARD LIBBY EVERETT (T); AARON ANDERSON (T)	ICPI	ROB HECHINGER
INCIDENT METEOROLOGIST	BOB TOBIN	TIME UNIT	
		COMPENSATION UNIT	RANDY TOTTEN
9. Prepared By:	Name: JILL JOHNSON	Position/Title: PSC	Signature: 
ICS 203	IAP Page	Date/Time: 10/10/2023 2000	

Fire Weather Forecast

FORECAST NO: 50
FORECAST FOR: Wed, Oct 11, 2023 Day Shift
FORECAST ISSUED: Tue Oct 10, 2023, 1900 PDT

NAME OF FIRE: Flat/Anvil
UNIT: OR-RSF-000413
SIGNED: Bob Tobin - IMET

WEATHER DISCUSSION: Today will be the third day of a three-day rain event. The upper-level low will move out of the area late in the afternoon. Expect similar temperatures and relative humidity to Tuesday. Winds will remain out of the southwest, but will be much lighter. High pressure will build into the region Wednesday night and Thursday. This will bring a warming and drying trend to the region Thursday and Friday. Then another weather disturbance will move into the region Friday night and Saturday for more precipitation and cooler temperatures.

TODAY: Variable clouds. A chance of showers through the day, but mostly in the afternoon.

Max Temperature(°F): Below 2500 ft. 50-58° (Little change) Above 2500 ft. 48-52° (Up 2-4)

Min RH: (Valleys) 80-90% (Little change)

20 FT Winds:

Valleys and Slopes: Southwest 5-10 mph with gusts to 12 mph.

Ridgetops: South-southwest 8-12 mph with gusts to 15 mph.

CWR (0.25"+): 70%

LAL: 1.

Haines: 2 (Very Low)

Inversion: Weak

Breaking: 1000

Mixing Heights: 1500 ft/AGL.

TONIGHT: Cloudy with a chance of evening showers.

Min Temperature (°F): 45-55° F

Max RH: 90-100%

20 FT Winds:

Slope/Valleys: South 4-7 mph...Becoming downslope drainage after midnight.

Ridgetops: Southwest 5-10 mph...Becoming Northeast 5-10 mph after midnight.

CWR (0.25"+): 10%

LAL: 1.

INVERSION: Weak inversion after 2000.

EXTENDED OUTLOOK:

Thursday...Variable clouds in the morning...clearing in the afternoon. Highs 60-70. Min Humidity 45-60%

Winds: Northeast 5-10 mph

Friday and Saturday...Increasing clouds through the day Friday. A chance of showers in the afternoon and overnight...showers likely Saturday. Highs 55-65. Min Humidity: 55-75%. Winds: South 10-12 mph with gusts to 20 mph.

PLEASE submit your weather observations to the IMET.

Snap a picture of your obs and text them to: 509-844-7003



Fire Behavior Forecast #87

Name of Incident: Anvil and FLAT	Administrative Unit: OR-RSF
Date & Time Issued: October 10, 2023 @ 1900	Operational Period: October 11, 2023
FBAN: Steve Ziel	Signed: /Z/

Assumptions: *Stating the obvious - fuels got wet yesterday, and will likely get even wetter today. Fire behavior will be minimal today due to conditions including wind and additional rain. Potential fire spread will be limited (nill) due to precipitation. The effects of rain will be cumulative across the fire area. The fire area will be affected by wind and scattered showers through the day. Heavy sheltered fuels will continue to smolder until they consume or more rain occurs. The Anvil and Flat fires continue to have scattered heat sources resulting from drought, and a full summer season of drying.*

Weather Summary

See attached Fire Weather Forecast

Fire Behavior Summary

Fuels in the fire area include very high load fluffy *Timber Litter (TL9)*, closed canopy *Timber Litter (TL5)* with needles, branches/ heavy fuel concentrations, and large *Timber with Understory (TU5)* shrubby open timber canopy. Primary tree species include mixed sizes of Douglas Fir/mixed conifer timber stands. Shrub fields and understory species include Oregon Myrtlewood, maple(s), manzanita, other shrub-form hardwoods. **Large snags and heavy fuel concentrations (often shrub covered) are common throughout all areas.** Live fuels (shrubs) are seasonally dry and may contribute to fire spread. **Moss** is common in timber stands as a ladder/spotting fuel. **Gorse (highly flammable shrub)** is common in timber harvest areas, especially on west side of fire area.

Today's potential fire behavior: *Expect wind/rain to maintain wet surface fuels. Today's fire behavior will include isolated/scattered pockets of smoldering heavy fuels. Gorse may burn with wind even when damp. Snags will fall more frequently due to length of time burning and increased wind. Heavy fuels (logs, stumps) will retain long-term heat due to a whole summer of drying. Fire behavior word for the day "Smoldering".*

* Fine fuel moisture= 22% + (exposed). Probability of Ignition 0%-5%. Group torch spotting to <.00 mile.

Fuel Type/Model	Rate of Spread	Flame Length	Ridge Top Gusts to 35 mph	
			Ch/hr	FL
If your work area looks like -	Ch/hr = FPM		Ch/hr	FL
Timber Litter (TL9) Fluffy/leafy	<1 ch/hr.	< 1 feet	< 1	< 1
Timber w/ Shrub Understory (TU5)	<1 ch/hr.	< 1 feet	< 1	< 1
Timber Litter – conifer needles (TL5)	<1 ch/hr.	< 1 feet	< 1	< 1

Specific Assignments:

FLAT – Monitor smoke location and characteristics. Evaluate weather, including wind speed and rainfall. Low reburn potential with area wide rain on fuels containing unburned pockets, fire killed shrubs, and ragged edge burn pattern.

ANVIL – Monitor smoke location and characteristics. Expect scattered areas of minimal fire behavior (smoldering) in heavy fuels, fire spread is unlikely. Rolling materials and falling snags may introduce burning materials to fuels.

Air Operations: Expect periods of mountain obscuration. Ridge top wind may affect approach/departure for aerial operations.

Safety

"Smoldering" fire behavior hazards includethreats to your feet, hands, airways, knees, shins, and eyes that will continue to be challenged by smoke, ash, slippery dirt (mud), sharp things, pokey stuff, and steam.



SAFETY MESSAGE

11 October 2023

INCIDENT: FLAT/ANVIL

OPERATIONAL PERIOD: 0700-1900

TOPICS:

MEDICAL EXTRACTION

Plan ahead for the worst and have redundant extraction/transport plans should injury or illness occur. Air assets may be one hour delayed due to weather impacts.



TRANSPORTATION/DRIVING

Allow extra travel time commuting from Gold Beach to ICP. Identify equipment for clearing blocked roads due to weather impacts. Avoid washouts and low-lying areas during periods of rainfall. Evaluate travel routes daily for weather impacts and have secondary access/egress routes.

DO YOUR BEST TO KEEP YOU AND YOUR PG DRY. VISQUEEN IS AVAILABLE AT LOGISTICS.

SAFETY OFFICERS: Jack Cates, Troy Corn, Mitch Wilson, Taija Corso

Deliberate Risk Assessment-Hazard Summary

11 OCT 2023

Hazard	Mitigation	Post Risk
Extraction/Aircraft	Identify medivac sites and helispots. Initiate ground transport to accident site for transport capability. Identify EMT/EMTP from resources assigned to division. Provide line-qualified paramedics to each division as available. Review IWI protocol to ensure familiarity. Consider Short Haul if conditions dictate. Utilize agency, national guard and civilian medivac as treatment/timing dictates. Evaluate ongoing need for repositioning medical personnel.	HIGH
Hazard Trees	Use avoidance to limit exposure time. Fall ahead to avoid exposure. Use qualified fallers or alternate methods if needed. Conduct on-going risk analysis of all work areas. Follow Hazard Tree Safety Guidelines (IRPG page 20-21).	HIGH
Heavy Equipment	Post lookouts and road guards around equipment work areas. Establish communications with equipment boss and operator. Do not work down-slope from equipment. Follow agency guidelines for chipping operations.	HIGH
Human/Environmental Factors	Engage as weather conditions permit. Provide visqueen for rainfall protection. Maintain an awareness of wildlife and poison oak. Provide warming, drying and laundry areas at ICP for crews and personal equipment. Maintain proper footing on slopes and awareness of rolling material.	MODERATE
Transportation	Improve lighting at HWY101 and Cape Blanco Rd intersection. Allow extra travel time commuting from Gold Beach to ICP. Identify equipment for clearing blocked roads due to weather impacts. Avoid washouts and low-lying areas during periods of rainfall. Evaluate travel routes daily for weather impacts and have secondary access/egress routes. Sign all incident travel routes. Provide daily updated travel plan maps. Practice defensive driving. Obey all speed limits on all roads and in school zones.	MODERATE
Public Interaction	Implement area and road closures as necessary. Maintain awareness of evacuation areas and provide accurate information dissemination. Maintain awareness of hunters within and adjacent to the perimeter.	LOW
Communication	Evaluate dead zones prior to engagement. Utilize human repeaters as needed. Ensure accountability of resources in problem areas. Spiking resources must have communication coverage.	LOW
Viral Transmission Mitigations, Communicable Disease	Maintain awareness of health and perform self-checks. Report and isolate if not feeling well. Use remote briefings and logistical layouts that provide for social-distancing as necessary. Establish liaison with Curry County Public Health.	LOW

Division/Group Assignment List (ICS 204 WF)
Controlled Unclassified Information//Basic

1. Incident Name:				3.		
FLAT/ANVIL				Branch:	Division/Group	
2. Operational Period: DAY						
Date/Time From: 10/11/2023 0700 WED		Date/Time To: 10/11/2023 1900 WED		A/L		
4. Operations Personnel						
FIELD OPS SECTION CHIEF	AARON ROWE			PLANNING OPS SECTION CHIEF	KURT RANTA, MIKE DAVIS (T)	
SAFETY OFFICER	TROY CORN, JACK CATES			DIVISION/GROUP SUPERVISOR	FIDEL VERDUZCO	
AIR SUPPORT GROUP SUPERVISOR	MATT KAMPF (T)					
5. Resources Assigned this Period						
Strike Team / Task Force / Resource Designator	LWD	Leader	Number Persons	Drop Off PT./Time	Pick Up PT./Time	
O-489.26 SOF2	10/22	MITCH WILSON	1	ANVIL ICP/0700	ANVIL ICP/1900	
O-420 SOFR	10/15	JIM STOUT	1	ANVIL ICP/0700	ANVIL ICP/1900	
E-352 ENG6 FORREST SEIBOLD	10/13	ELIJAH SHEETS	3	ANVIL ICP/0700	ANVIL ICP/1900	
E-369 ENG6 GE FORESTRY	10/16	HUGH CHAPARRO	3	ANVIL ICP/0700	ANVIL ICP/1900	
E-401 EXC2 TABLE MOUNTAIN	10/20	EDDIE HADLEY	2	ANVIL ICP/0700	ANVIL ICP/1900	
O-475 REAF	10/18	AMANDA BROWN	1	ANVIL ICP/0700	ANVIL ICP/1900	
O-409 MED TEAM 22	10/12	CAMERON COLEMAN	2	ANVIL ICP/0700	ANVIL ICP/1900	
E-3 AMBO 15	10/12	GARY FORD	1	ANVIL ICP/0700	ANVIL ICP/1900	
6. Control Operations/Work Assignments:						
<p>TASK: Complete suppression repair, focusing on boulder placement near DP283. Backhaul suppression equipment.</p> <p>PURPOSE: To minimize effects of suppression actions.</p> <p>END STATE: Impacts to values have been minimized to the extent practical. READs have approved all suppression repair. All equipment returned to supply unit.</p>						
7. Special Instructions:						
<p>Refer to the Medical Plan for ground transport times.</p> <p>The following resources will work in all divisions.</p> <p>ARCH O-910 Molly Ray, O-870 Keeley Lyons-Letts, O-478 Joe Stokes</p>						
8. Division/Group Communication Summary						
Function	Channel	RX Frequency N/W	RX Tone/NAC	TX Frequency N/W	TX Tone/NAC	Mode
TACTICAL	4	166.7250 N	110.9	166.7250 N	110.9	A
COMMAND	10	170.4500N	110.9	168.1000 N	110.9	A
COMMAND	11	1168.0025 N	110.9	162.5375 N	110.9	A
AIR TO GROUND	13	171.1750 N		171.1750 N		A
AIR TO GROUND	14	173.1000 N		173.1000 N		A
AIR TO GROUND	15	155.3475 N		155.3475 N	156.7	A
AIR GUARD	16	168.6250 N		168.6250 N	110.9	A
9. Prepared By (Resource Unit Leader)			Approved By (Planning Section Chief)		Date	Time
SUE PUDDY			JILL JOHNSON		10/10/2023	2000

Division/Group Assignment List (ICS 204 WF)

Controlled Unclassified Information//Basic

1. Incident Name:				3.			
FLAT/ANVIL				Branch:		Division/Group	
2. Operational Period: DAY							
Date/Time From: 10/11/2023 0700 WED		Date/Time To: 10/11/2023 1900 WED				R	
4. Operations Personnel							
FIELD OPS SECTION CHIEF		AARON ROWE		PLANNING OPS SECTION CHIEF		KURT RANTA MIKE DAVIS (T)	
SAFETY OFFICER		TROY CORN, JACK CATES		DIVISION/GROUP SUPERVISOR		BOB HINDS	
AIR SUPPORT GROUP SUPERVISOR		MATT KAMPF (T)					
5. Resources Assigned this Period							
Strike Team / Task Force / Resource Designator		LWD	Leader	Number Persons	Drop Off PT./Time	Pick Up PT./Time	
O-489.26 SOF2		10/22	MITCH WILSON	1	ANVIL ICP/0700	ANVIL ICP/1900	
O-420 SOFR		10/15	JIM STOUT	1	ANVIL ICP/0700	ANVIL ICP/1900	
O-392 TFLD (TASK FORCE 4)		10/15	ISSAC SOLOMAN	1	ANVIL ICP/0700	ANVIL ICP/1900	
C-65 HC1 ROGUE RIVER		10/15	KC KOOGLER	21	ANVIL ICP/0700	ANVIL ICP/1900	
C-59 HC2IA GRAYBACK 17A		10/12	TIM BREWERY	20	ANVIL ICP/0700	ANVIL ICP/1900	
E-366 CHP2 SALAMANDER		10/16	ZACK UNDERWOOD	3	ANVIL ICP/0700	ANVIL ICP/1900	
O-476 REAF		10/19	ALAN WHITED	1	ANVIL ICP/0700	ANVIL ICP/1900	
O-407 REMS 21		10/12	BRENNAN HOLLOWAY	4	ANVIL ICP/0700	ANVIL ICP/1900	
E-163 AMBO 7		10/15	FRANCISCO PACHECO	2	ANVIL ICP/0700	ANVIL ICP/1900	
8. Division/Group Communication Summary							
Function	Channel	RX Frequency N/W	RX Tone/NAC	TX Frequency N/W	TX Tone/NAC	Mode	
TACTICAL	6	168.2500 N	110.9	168.2500 N	110.9	A	
COMMAND	11	1168.0025 N	110.9	162.5375 N	110.9	A	
COMMAND	12	167.8375 N	110.9	162.5625 N	110.9	A	
AIR TO GROUND	13	171.1750 N		171.1750 N		A	
AIR TO GROUND	14	173.1000 N		173.1000 N		A	
AIR TO GROUND	15	155.3475 N		155.3475 N	156.7	A	
AIR GUARD	16	168.6250 N		168.6250 N	110.9	A	
9. Prepared By (Resource Unit Leader)			Approved By (Planning Section Chief)			Date	Time
SUE PUDDY			JILL JOHNSON			10/10/2023	2000

Division/Group Assignment List (ICS 204 WF)

Controlled Unclassified Information//Basic

1. Incident Name:				3.			
FLAT/ANVIL				Branch:		Division/Group	
2. Operational Period: DAY							
Date/Time From: 10/11/2023 0700 WED		Date/Time To: 10/11/2023 1900 WED				R	
4. Operations Personnel							
FIELD OPS SECTION CHIEF		AARON ROWE		PLANNING OPS SECTION CHIEF		KURT RANTA MIKE DAVIS (T)	
SAFETY OFFICER		TROY CORN, JACK CATES		DIVISION/GROUP SUPERVISOR		BOB HINDS	
AIR SUPPORT GROUP SUPERVISOR		MATT KAMPF (T)					
5. Resources Assigned this Period							
Strike Team / Task Force / Resource Designator		LWD	Leader	Number Persons	Drop Off PT./Time	Pick Up PT./Time	
6. Control Operations/Work Assignments:							
<p>TASK: Complete suppression repair, focusing on slash abatement, log decking, berm installation along BLM P.O.D. boundary.</p> <p>PURPOSE: To minimize effects of suppression actions.</p> <p>END STATE: Impacts to values have been minimized to the extent practical. READs have approved all suppression repair.</p>							
7. Special Instructions:							
<p>Refer to the Medical Plan for ground transport times.</p> <p>The following resources will work in all divisions. ARCH O-910 Molly Ray, O-870 Keeley Lyons-Letts, O-478 Joe Stokes</p>							
8. Division/Group Communication Summary							
Function	Channel	RX Frequency N/W	RX Tone/NAC	TX Frequency N/W	TX Tone/NAC	Mode	
TACTICAL	6	168.2500 N	110.9	168.2500 N	110.9	A	
COMMAND	11	1168.0025 N	110.9	162.5375 N	110.9	A	
COMMAND	12	167.8375 N	110.9	162.5625 N	110.9	A	
AIR TO GROUND	13	171.1750 N		171.1750 N		A	
AIR TO GROUND	14	173.1000 N		173.1000 N		A	
AIR TO GROUND	15	155.3475 N		155.3475 N	156.7	A	
AIR GUARD	16	168.6250 N		168.6250 N	110.9	A	
9. Prepared By (Resource Unit Leader)			Approved By (Planning Section Chief)			Date	Time
SUE PUDDY			JILL JOHNSON			10/10/2023	2000

Division/Group Assignment List (ICS 204 WF)

Controlled Unclassified Information//Basic

1. Incident Name:				3.			
FLAT/ANVIL				Branch:		Division/Group	
2. Operational Period: DAY							
Date/Time From: 10/11/2023 0700		Date/Time To: 10/11/2023 1900		T / Z			
WED		WED					
4. Operations Personnel							
FIELD OPS SECTION CHIEF		AARON ROWE		PLANNING OPS SECTION CHIEF		KURT RANTA MIKE DAVIS (T)	
SAFETY OFFICER		TROY CORN, JACK CATES		DIVISION/GROUP SUPERVISOR		KEN FOSS	
AIR SUPPORT GROUP SUPERVISOR		MATT KAMPF (T)					
5. Resources Assigned this Period							
Strike Team / Task Force / Resource Designator		LWD	Leader	Number Persons	Drop Off PT./Time	Pick Up PT./Time	
O-489.26 SOF2		10/22	MITCH WILSON	1	ANVIL ICP/0700	ANVIL ICP/1900	
O-419 SOFR		10/14	SPENCER GREGORY	1	ANVIL ICP/0700	ANVIL ICP/1900	
O-386 TFLD		10/14	JOSHUA JORDAN	1	ANVIL ICP/0700	ANVIL ICP/1900	
O-413 FMOD TOMS TIMBER		10/14	GINA DAVIS	2	ANVIL ICP/0700	ANVIL ICP/1900	
C-62 HC2IA PAT RICK ENVIRO 18B		10/12	BEN LEWIS	20	ANVIL ICP/0700	ANVIL ICP/1900	
E-128 ENG3 J3 CONTRACTING		10/16	MATTHEW SOARES	3	ANVIL ICP/0700	ANVIL ICP/1900	
E-372 ENG3 GRAYBACK FORESTRY,		10/15	JUSTIN BURKHALTER	3	ANVIL ICP/0700	ANVIL ICP/1900	
E-371 ENG3 GRAYBACK FORESTRY,		10/15	STEPHEN JONES	3	ANVIL ICP/0700	ANVIL ICP/1900	
E-368 ENG6 GRAYBACK FORESTRY		10/15	JASPER BIVENS	3	ANVIL ICP/0700	ANVIL ICP/1900	
E-370 ENG6 KEVIN M KNIGHT		10/15	ANTHONY CABALES	3	ANVIL ICP/0700	ANVIL ICP/1900	
E-400 EXC2 LONE PINE		10/20	RUSTY LAMAR	2	ANVIL ICP/0700	ANVIL ICP/1900	
E-214 VUTV KIRCHER AND SHERMAN					ANVIL ICP/0700	ANVIL ICP/1900	
O-868 REAF TARA SUNYATA INCE-JOHANNSEN		10/12	TARA SUNYATA INCE-JOHANNSEN	1	ANVIL ICP/0700	ANVIL ICP/1900	
8. Division/Group Communication Summary							
Function	Channel	RX Frequency N/W	RX Tone/NAC	TX Frequency N/W	TX Tone/NAC	Mode	
TACTICAL	5	166.7750 N	110.9	166.7750 N	110.9	A	
COMMAND	11	1168.0025 N	110.9	162.5375 N	110.9	A	
COMMAND	12	167.8375 N	110.9	162.5625 N	110.9	A	
AIR TO GROUND	13	171.1750 N		171.1750 N		A	
AIR TO GROUND	14	173.1000 N		173.1000 N		A	
AIR TO GROUND	15	155.3475 N		155.3475 N	156.7	A	
AIR GUARD	16	168.6250 N		168.6250 N	110.9	A	
9. Prepared By (Resource Unit Leader)			Approved By (Planning Section Chief)			Date	Time
SUE PUDDY			JILL JOHNSON			10/10/2023	2000

Division/Group Assignment List (ICS 204 WF)
Controlled Unclassified Information//Basic

1. Incident Name:				3.		
FLAT/ANVIL				Branch:	Division/Group	
2. Operational Period: DAY						
Date/Time From: 10/11/2023 0700 WED		Date/Time To: 10/11/2023 1900 WED		T / Z		
4. Operations Personnel						
FIELD OPS SECTION CHIEF	AARON ROWE			PLANNING OPS SECTION CHIEF	KURT RANTA MIKE DAVIS (T)	
SAFETY OFFICER	TROY CORN, JACK CATES			DIVISION/GROUP SUPERVISOR	KEN FOSS	
AIR SUPPORT GROUP SUPERVISOR	MATT KAMPF (T)					
5. Resources Assigned this Period						
Strike Team / Task Force / Resource Designator	LWD	Leader	Number Persons	Drop Off PT./Time	Pick Up PT./Time	
O-367 MESV REMS 27	10/17	MASON AVERY	4	ANVIL ICP/0700	ANVIL ICP/1900	
O-299 EMPF MED TEAM17	10/12	BRENTON MATTHEWS	1	ANVIL ICP/0700	ANVIL ICP/1900	
O-155 AEMF MED TEAM 17	10/14	THANE CUNNINGHAM	1	ANVIL ICP/0700	ANVIL ICP/1900	
O-233 MESU MED TEAM 3	10/11	THOMAS YAGER	2	ANVIL ICP/0700	ANVIL ICP/1900	
E-268 AMB2 AMBO 10	10/13	SARA FISHER	2	ANVIL ICP/0700	ANVIL ICP/1900	
6. Control Operations/Work Assignments:						
<p>Task: Patrol controlled fire edge along Elk River Rd, backhaul suppression equipment, and complete suppression repair. Focus suppression repair on dozer line repair on China Mountain and north and south of DP706.</p> <p>PURPOSE: To minimize effects of suppression actions.</p> <p>END STATE: Impacts to values have been minimized to the extent practical. READs have approved all suppression repair. All equipment returned to supply unit.</p>						
7. Special Instructions:						
<p>Refer to the Medical Plan for ground transport times.</p> <p>The following resources will work in all divisions. ARCH O-910 Molly Ray, O-870 Keeley Lyons-Letts, O-478 Joe Stokes</p>						
8. Division/Group Communication Summary						
Function	Channel	RX Frequency N/W	RX Tone/NAC	TX Frequency N/W	TX Tone/NAC	Mode
TACTICAL	5	166.7750 N	110.9	166.7750 N	110.9	A
COMMAND	11	1168.0025 N	110.9	162.5375 N	110.9	A
COMMAND	12	167.8375 N	110.9	162.5625 N	110.9	A
AIR TO GROUND	13	171.1750 N		171.1750 N		A
AIR TO GROUND	14	173.1000 N		173.1000 N		A
AIR TO GROUND	15	155.3475 N		155.3475 N	156.7	A
AIR GUARD	16	168.6250 N		168.6250 N	110.9	A
9. Prepared By (Resource Unit Leader)			Approved By (Planning Section Chief)		Date	Time
SUE PUDDY			JILL JOHNSON		10/10/2023	2000

Division/Group Assignment List (ICS 204 WF)
Controlled Unclassified Information//Basic

1. Incident Name:				3.		
FLAT/ANVIL				Branch:	Division/Group	
2. Operational Period: DAY						
Date/Time From: 10/11/2023 0700 WED		Date/Time To: 10/11/2023 1900 WED		CONTINGENCY		
4. Operations Personnel						
FIELD OPS SECTION CHIEF		AARON ROWE		PLANNING OPS SECTION CHIEF		KURT RANTA MIKE DAVIS (T)
SAFETY OFFICER		TROY CORN, JACK CATES		DIVISION/GROUP SUPERVISOR		SAM STEINSHOUER
AIR SUPPORT GROUP SUPERVISOR		MATT KAMPF (T)				
5. Resources Assigned this Period						
Strike Team / Task Force / Resource Designator		LWD	Leader	Number Persons	Drop Off PT./Time	Pick Up PT./Time
O-489.26 SOF2		10/22	MITCH WILSON	1	ANVIL ICP/0700	ANVIL ICP/1900
O-166 SOFR (T)		10/18	CHRIS ANTHIS	1	ANVIL ICP/0700	ANVIL ICP/1900
O-401 TFLD (TASK FORCE 10)		10/14	MATTHEW QUINN	1	ANVIL ICP/0700	ANVIL ICP/1900
O-242 HEQB		10/13	ANDREW SHIELDS	1	ANVIL ICP/0700	ANVIL ICP/1900
O-396 HEQB		10/20	BRANDON VOSS	1	ANVIL ICP/0700	ANVIL ICP/1900
O-453 HEQB (T)		10/14	MAREN SCHWENZFEIER	1	ANVIL ICP/0700	ANVIL ICP/1900
O-460 HEQB (T)		10/12	JOSE CAMACHO (T)	1	ANVIL ICP/0700	ANVIL ICP/1900
C-57 CR2I A.S.I. ARDEN 12A		10/11	JEFF HARRISON	20	ANVIL ICP/0700	ANVIL ICP/1900
C-58 CR2IA NORTH PACIFIC		10/13	JUAN PADILLA	20	ANVIL ICP/0700	ANVIL ICP/1900
E-353 ENG6 B & B FIRE		10/13	TIM BAILY	3	ANVIL ICP/0700	ANVIL ICP/1900
E-280 DZR2 CAMP, MARK		10/19	BOB WHITE	2	ANVIL ICP/0700	ANVIL ICP/1900
E-302 EXC2 BRONSON		10/20	JASON BRONSON	2	ANVIL ICP/0700	ANVIL ICP/1900
E-243 MBM1 ZEB'S TREE SERVICE		10/21	ZACH WILLIAMS	2	ANVIL ICP/0700	ANVIL ICP/1900
E-155 MBM2 WIND RIVER LOGGING		10/14	BRIAN BIRKENFELD	2	ANVIL ICP/0700	ANVIL ICP/1900
E-286 MBM2 UTTING CONSTRUCTION		10/24	LIZA JOHNSON	2	ANVIL ICP/0700	ANVIL ICP/1900
8. Division/Group Communication Summary						
Function	Channel	RX Frequency N/W	RX Tone/NAC	TX Frequency N/W	TX Tone/NAC	Mode
TACTICAL	3	168.6000 N	110.9	168.6000 N	110.9	A
COMMAND	11	1168.0025 N	110.9	162.5375 N	110.9	A
COMMAND	12	167.8375 N	110.9	162.5625 N	110.9	A
AIR TO GROUND	13	171.1750 N		171.1750 N		A
AIR TO GROUND	14	173.1000 N		173.1000 N		A
AIR TO GROUND	15	155.3475 N		155.3475 N	156.7	A
AIR GUARD	16	168.6250 N		168.6250 N	110.9	A
9. Prepared By (Resource Unit Leader)			Approved By (Planning Section Chief)		Date	Time
SUE PUDDY			JILL JOHNSON		10/10/2023	2000

Division/Group Assignment List (ICS 204 WF)
Controlled Unclassified Information//Basic

1. Incident Name:				3.		
FLAT/ANVIL				Branch:	Division/Group	
2. Operational Period: DAY						
Date/Time From: 10/11/2023 0700 WED		Date/Time To: 10/11/2023 1900 WED		CONTINGENCY		
4. Operations Personnel						
FIELD OPS SECTION CHIEF		AARON ROWE		PLANNING OPS SECTION CHIEF		KURT RANTA MIKE DAVIS (T)
SAFETY OFFICER		TROY CORN, JACK CATES		DIVISION/GROUP SUPERVISOR		SAM STEINSHOUER
AIR SUPPORT GROUP SUPERVISOR		MATT KAMPF (T)				
5. Resources Assigned this Period						
Strike Team / Task Force / Resource Designator		LWD	Leader	Number Persons	Drop Off PT./Time	Pick Up PT./Time
E-95 MBM3 PARTRIDGE		10/20	WARREN PARTRIDGE	2	ANVIL ICP/0700	ANVIL ICP/1900
E-361 FEL2 MARK JONES		10/15	JAKE BROWN	2	ANVIL ICP/0700	ANVIL ICP/1900
E-386 CHP1 PACIFIC RIDGELINE		10/19	FRED HULTZ	4	ANVIL ICP/0700	ANVIL ICP/1900
E-387 CHP1 BRINKS LAND IMPROVEMENT		10/23	ZEB EARL		ANVIL ICP/0700	ANVIL ICP/1900
E-160 CHP2 TORRES CONTRACTING		10/23	ANGEL CORTES	3	ANVIL ICP/0700	ANVIL ICP/1900
E-108 CHP3 WEST COAST REFORESTATION		10/23	LUIS VEGA	3	ANVIL ICP/0700	ANVIL ICP/1900
E-393 CHP3 AXSUS ENTERPRISES		10/19	RYAN MCARTHUR	2	ANVIL ICP/0700	ANVIL ICP/1900
E-367 CHP2 PACIFIC RIDGELINE		10/17	HOLLY PODOLL	3	ANVIL ICP/0700	ANVIL ICP/1900
E-349 BHOE AXSUS ENTERPRISES		10/13	HALL MORGANROTH	1	ANVIL ICP/0700	ANVIL ICP/1900
E-348 DUMP AXSUS ENTERPRISES		10/13	JONATHAN HINTON	1	ANVIL ICP/0700	ANVIL ICP/1900
E-406 DUMP DAVIS CORP		10/20	MIKE COX	1	ANVIL ICP/0700	ANVIL ICP/1900
O-394 TFLD (TASK FORCE 12)		10/15	STEVEN NATHO	1	ANVIL ICP/0700	ANVIL ICP/1900
O-395 HEQB		10/17	KORY DAVIS	1	ANVIL ICP/0700	ANVIL ICP/1900
C-60 CR2IA GRAYBACK FORESTRY 17B		10/12	GAVIN SEEMAN	20	ANVIL ICP/0700	ANVIL ICP/1900
C-66 CRW2 PONDEROSA		10/21	CALEB TAYLOR	20	ANVIL ICP/0700	ANVIL ICP/1900
8. Division/Group Communication Summary						
Function	Channel	RX Frequency N/W	RX Tone/NAC	TX Frequency N/W	TX Tone/NAC	Mode
TACTICAL	3	168.6000 N	110.9	168.6000 N	110.9	A
COMMAND	11	1168.0025 N	110.9	162.5375 N	110.9	A
COMMAND	12	167.8375 N	110.9	162.5625 N	110.9	A
AIR TO GROUND	13	171.1750 N		171.1750 N		A
AIR TO GROUND	14	173.1000 N		173.1000 N		A
AIR TO GROUND	15	155.3475 N		155.3475 N	156.7	A
AIR GUARD	16	168.6250 N		168.6250 N	110.9	A
9. Prepared By (Resource Unit Leader)			Approved By (Planning Section Chief)		Date	Time
SUE PUDDY			JILL JOHNSON		10/10/2023	2000

Division/Group Assignment List (ICS 204 WF)
Controlled Unclassified Information//Basic

1. Incident Name:			3.			
FLAT/ANVIL			Branch:		Division/Group	
2. Operational Period: DAY			CONTINGENCY			
Date/Time From: 10/11/2023 0700 WED		Date/Time To: 10/11/2023 1900 WED				
4. Operations Personnel						
FIELD OPS SECTION CHIEF		AARON ROWE		PLANNING OPS SECTION CHIEF		KURT RANTA MIKE DAVIS (T)
SAFETY OFFICER		TROY CORN, JACK CATES		DIVISION/GROUP SUPERVISOR		SAM STEINSHOUER
AIR SUPPORT GROUP SUPERVISOR		MATT KAMPF (T)				
5. Resources Assigned this Period						
Strike Team / Task Force / Resource Designator		LWD	Leader	Number Persons	Drop Off PT./Time	Pick Up PT./Time
E-129 ENG4 ALLIED WATER SERVICE		10/20	JOHN KNIGHT	3	ANVIL ICP/0700	ANVIL ICP/1900
E-183 DZR2 JSW LOGGING		10/24	KADE WOODWARD	2	ANVIL ICP/0700	ANVIL ICP/1900
E-172 FEL2 RUDE LOGGING		10/18	BRANDON ALAN	2	ANVIL ICP/0700	ANVIL ICP/1900
E-207 SKD2 BOB MURRAY		10/21	GREG BACHMAN	2	ANVIL ICP/0700	ANVIL ICP/1900
E-159 CHP2 JO INTERNATIONAL		10/17	MIKE SWONSON	3	ANVIL ICP/0700	ANVIL ICP/1900
E-365 CHP2 PROMETHEUS		10/17	JACOB CAIN	3	ANVIL ICP/0700	ANVIL ICP/1900
E-384 CHP3 ASI ARDEN		10/17	MICHAEL HOLLOWAY	3	ANVIL ICP/0700	ANVIL ICP/1900
O-482 REAF		10/19	HAILEY HENDERSON	1	ANVIL ICP/0700	ANVIL ICP/1900
O-375 REAF		10/13	KAITLYN A SCHWINDT (T)	1	ANVIL ICP/0700	ANVIL ICP/1900
O-425 FOBS		10/16	KENNETH HUTCHINSON	1	ANVIL ICP/0700	ANVIL ICP/1900
O-369 REMS14 WILDERNESS MEDICS		10/13	MILES HACKNEY	4	ANVIL ICP/0700	ANVIL ICP/1900
O-333 MESU MED TEAM 4		10/13	BRANDON MORGAN	2	ANVIL ICP/0700	ANVIL ICP/1900
E-340 MESU MED TEAM 13		10/15	BRIAN HOFFOWER	2	ANVIL ICP/0700	ANVIL ICP/1900
E-269 AMB2 AMBO 5		10/19	HENRY DRANE	2	ANVIL ICP/0700	ANVIL ICP/1900
8. Division/Group Communication Summary						
Function	Channel	RX Frequency N/W	RX Tone/NAC	TX Frequency N/W	TX Tone/NAC	Mode
TACTICAL	3	168.6000 N	110.9	168.6000 N	110.9	A
COMMAND	11	1168.0025 N	110.9	162.5375 N	110.9	A
COMMAND	12	167.8375 N	110.9	162.5625 N	110.9	A
AIR TO GROUND	13	171.1750 N		171.1750 N		A
AIR TO GROUND	14	173.1000 N		173.1000 N		A
AIR TO GROUND	15	155.3475 N		155.3475 N	156.7	A
AIR GUARD	16	168.6250 N		168.6250 N	110.9	A
9. Prepared By (Resource Unit Leader)			Approved By (Planning Section Chief)		Date	Time
SUE PUDDY			JILL JOHNSON		10/10/2023	2000

Division/Group Assignment List (ICS 204 WF)
Controlled Unclassified Information//Basic

1. Incident Name:				3.			
FLAT/ANVIL				Branch:		Division/Group	
2. Operational Period: DAY				CONTINGENCY			
Date/Time From: 10/11/2023 0700 WED		Date/Time To: 10/11/2023 1900 WED					
4. Operations Personnel							
FIELD OPS SECTION CHIEF		AARON ROWE		PLANNING OPS SECTION CHIEF		KURT RANTA MIKE DAVIS (T)	
SAFETY OFFICER		TROY CORN, JACK CATES		DIVISION/GROUP SUPERVISOR		SAM STEINSHOUER	
AIR SUPPORT GROUP SUPERVISOR		MATT KAMPF (T)					
5. Resources Assigned this Period							
Strike Team / Task Force / Resource Designator		LWD	Leader	Number Persons	Drop Off PT./Time	Pick Up PT./Time	
6. Control Operations/Work Assignments:							
<p>TASK: Complete mastication along contingency lines on the 5502 road and perform suppression repair, focusing on dozer line repair, road damage repair, and decking logs.</p> <p>PURPOSE: Establish potential future control lines. Repair completed to minimize effects of suppression actions.</p> <p>END STATE: Impacts to values have been minimized to the extent practical. READs have approved all suppression repair. All equipment returned to supply unit.</p>							
7. Special Instructions:							
<p>Refer to the Medical Plan for ground transport times.</p> <p>The following resources will work in all divisions. ARCH O-910 Molly Ray, O-870 Keeley Lyons-Letts, O-478 Joe Stokes</p>							
8. Division/Group Communication Summary							
Function	Channel	RX Frequency N/W	RX Tone/NAC	TX Frequency N/W	TX Tone/NAC	Mode	
TACTICAL	3	168.6000 N	110.9	168.6000 N	110.9	A	
COMMAND	11	1168.0025 N	110.9	162.5375 N	110.9	A	
COMMAND	12	167.8375 N	110.9	162.5625 N	110.9	A	
AIR TO GROUND	13	171.1750 N		171.1750 N		A	
AIR TO GROUND	14	173.1000 N		173.1000 N		A	
AIR TO GROUND	15	155.3475 N		155.3475 N	156.7	A	
AIR GUARD	16	168.6250 N		168.6250 N	110.9	A	
9. Prepared By (Resource Unit Leader)			Approved By (Planning Section Chief)			Date	Time
SUE PUDDY			JILL JOHNSON			10/10/2023	2000

Division/Group Assignment List (ICS 204 WF)
Controlled Unclassified Information//Basic

1. Incident Name:				3.		
FLAT/ANVIL				Branch: FLAT FIRE	Division/Group D/W	
2. Operational Period: DAY						
Date/Time From: 10/11/2023 0700		Date/Time To: 10/11/2023 1900				
WED		WED				
4. Operations Personnel						
FIELD OPS SECTION CHIEF	AARON ROWE			PLANNING OPS SECTION CHIEF	KURT RANTA MIKE DAVIS (T)	
SAFETY OFFICER	TROY CORN, JACK CATES			DIVISION/GROUP SUPERVISOR	GREG ANDERSON	
AIR SUPPORT GROUP SUPERVISOR	MATT KAMPF (T)					
5. Resources Assigned this Period						
Strike Team / Task Force / Resource Designator	LWD	Leader	Number Persons	Drop Off PT./Time	Pick Up PT./Time	
O-421 SOF2	10/15	RYAN ROMERO	1	GOLD BEACH/0700	GOLD BEACH/1900	
O-489.27 SOF2	10/22	TAIJASA CORSO	1	GOLD BEACH/0700	GOLD BEACH/1900	
O-366 TFLD	10/12	RYAN WEBSTER	1	GOLD BEACH/0700	GOLD BEACH/1900	
O-183 HEQB (T)	10/20	TRISTAN JAMIESON	1	GOLD BEACH/0700	GOLD BEACH/1900	
C-61 HC2IA BIG STATE 14	10/13	MEKAIH STANSEL	20	GOLD BEACH/0700	GOLD BEACH/1900	
E-363 EXC2 NORTHSTATE HEAVY EQUIP.	10/14	TANNER PARKS	2	GOLD BEACH/0700	GOLD BEACH/1900	
E-390 EXC2 TOUGH EQUIPMENT	10/17	CASEY MOORE	2	GOLD BEACH/0700	GOLD BEACH/1900	
E-364 CHP2 SAWTOOTH FIREWISE	10/15	EMILY LINDEMOOD	3	GOLD BEACH/0700	GOLD BEACH/1900	
O-310 EMPF CASCADE MEDICAL	10/13	JAKE MCQUEEN	1	GOLD BEACH/0700	GOLD BEACH/1900	
O-226 EMPF ADVENTURE MEDICS	10/11	MATHEW WALSH	1	GOLD BEACH/0700	GOLD BEACH/1900	
E-429 AMB2 AMBO9	10/16	BRITNEY POWELL	2	GOLD BEACH/0700	GOLD BEACH/1900	
8. Division/Group Communication Summary						
Function	Channel	RX Frequency N/W	RX Tone/NAC	TX Frequency N/W	TX Tone/NAC	Mode
TACTICAL	6	168.2500 N	110.9	168.2500 N	110.9	A
COMMAND	7	170.9750 N	110.9	168.7000 N	110.9	A
COMMAND	8	170.0125 N	110.9	165.2500 N	110.9	A
COMMAND	9	171.0375 N	110.9	162.1875 N	110.9	A
AIR TO GROUND	13	171.1750 N		171.1750 N		A
AIR TO GROUND	14	173.1000 N		173.1000 N		A
AIR TO GROUND	15	155.3475 N		155.3475 N	156.7	A
AIR GUARD	16	168.6250 N		168.6250 N	110.9	A
9. Prepared By (Resource Unit Leader)			Approved By (Planning Section Chief)		Date	Time
JENNIFER NORTON (T)			JILL JOHNSON		10/10/2023	2000

Division/Group Assignment List (ICS 204 WF)

Controlled Unclassified Information//Basic

1. Incident Name:				3.			
FLAT/ANVIL				Branch: FLAT FIRE		Division/Group D/W	
2. Operational Period: DAY							
Date/Time From: 10/11/2023 0700 WED		Date/Time To: 10/11/2023 1900 WED					
4. Operations Personnel							
FIELD OPS SECTION CHIEF		AARON ROWE		PLANNING OPS SECTION CHIEF		KURT RANTA MIKE DAVIS (T)	
SAFETY OFFICER		TROY CORN, JACK CATES		DIVISION/GROUP SUPERVISOR		GREG ANDERSON	
AIR SUPPORT GROUP SUPERVISOR		MATT KAMPF (T)					
5. Resources Assigned this Period							
Strike Team / Task Force / Resource Designator		LWD	Leader	Number Persons	Drop Off PT./Time	Pick Up PT./Time	
6. Control Operations/Work Assignments:							
<p>TASK: Complete Suppression Repair, focusing on Pine Grove bike trail repair, chipping near DP105, and processing and decking logs off of 3680 Rd.</p> <p>PURPOSE: To minimize effects of suppression actions.</p> <p>END STATE: Impacts to values have been minimized to the extent practical. READs have approved all suppression repair.</p>							
7. Special Instructions:							
<p>Refer to the Medical Plan for ground transport times.</p> <p>The Following resources will work in all divisions. ARCH O-910 Molly Ray, O-870 Keeley Lyons-Letts, O-478 Joe Stokes</p>							
8. Division/Group Communication Summary							
Function	Channel	RX Frequency N/W	RX Tone/NAC	TX Frequency N/W	TX Tone/NAC	Mode	
TACTICAL	6	168.2500 N	110.9	168.2500 N	110.9	A	
COMMAND	7	170.9750 N	110.9	168.7000 N	110.9	A	
COMMAND	8	170.0125 N	110.9	165.2500 N	110.9	A	
COMMAND	9	171.0375 N	110.9	162.1875 N	110.9	A	
AIR TO GROUND	13	171.1750 N		171.1750 N		A	
AIR TO GROUND	14	173.1000 N		173.1000 N		A	
AIR TO GROUND	15	155.3475 N		155.3475 N	156.7	A	
AIR GUARD	16	168.6250 N		168.6250 N	110.9	A	
9. Prepared By (Resource Unit Leader)			Approved By (Planning Section Chief)			Date	Time
JENNIFER NORTON (T)			JILL JOHNSON			10/10/2023	2000

Division/Group Assignment List (ICS 204 WF)

Controlled Unclassified Information//Basic

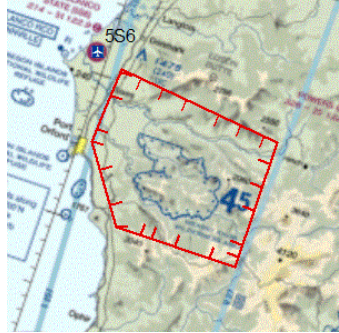
1. Incident Name:				3.		
FLAT/ANVIL				Branch:		Division/Group
2. Operational Period: DAY				CFPA		CFPA GROUP
Date/Time From: 10/11/2023 0700 WED		Date/Time To: 10/11/2023 1900 WED		ANVIL FIRE		
4. Operations Personnel						
FIELD OPS SECTION CHIEF		AARON ROWE		PLANNING OPS SECTION CHIEF		KURT RANTA MIKE DAVIS (T)
GROUP SUPERVISOR		DAVID BROWN, BRETT WEIDEMILLER MARCUS EBERLEIN (T)		SAFETY OFFICER		TROY CORN, JACK CATES COUGAN CAROTHERS (T)
AIR SUPPORT GROUP SUPERVISOR		MATT KAMPF (T)				
5. Resources Assigned this Period						
Strike Team / Task Force / Resource Designator		LWD	Leader	Number Persons	Drop Off PT./Time	Pick Up PT./Time
C-10000 CRW2 GRAYBACK C-152		10/11	DAN SILLER	10	ANVIL ICP/0700	ANVIL ICP/1900
C-10002 CRW2 GRAYBACK C-158		10/11	JEROME LOVE	20	ANVIL ICP/0700	ANVIL ICP/1900
C-10004 CRW2 GRAYBACK E-71 BURN MODULE		10/11	SEAN HENDRIX	4	ANVIL ICP/0700	ANVIL ICP/1900
C-10005 CRW2 GRAYBACK C-159		10/11	ROBERT PONDELICK	20	ANVIL ICP/0700	ANVIL ICP/1900
C-10001 CRW2 GRAYBACK		10/24	EDGAR HAUGHTBY	20	ANVIL ICP/0700	ANVIL ICP/1900
C-10003 CRW2 GRAYBACK		10/24	EDWIN LORD	20	ANVIL ICP/0700	ANVIL ICP/1900
E-10003 DZR2 SUTPHIN TRUCKING		10/29		1	ANVIL ICP/0700	ANVIL ICP/1900
E-10039 LOGL JNK CONTRACT CUTTING		10/26		1	ANVIL ICP/0700	ANVIL ICP/1900
E-157 FEL2 5S LAND SERVICES		10/18	CHANCE WALTER	1	ANVIL ICP/0700	ANVIL ICP/1900
E-168 EXC2 GORGE MACHINERY		10/24	CAYDEN WEBB	1	ANVIL ICP/0700	ANVIL ICP/1900
O-10029 DIVS		10/22	BRETT WEIDEMILLER	1	ANVIL ICP/0700	ANVIL ICP/1900
8. Division/Group Communication Summary						
Function	Channel	RX Frequency N/W	RX Tone/NAC	TX Frequency N/W	TX Tone/NAC	Mode
TACTICAL	1	168.050	110.9	168.050	110.9	
COMMAND	11	168.0625	110.9	162.5375	110.9	
AIR TO GROUND	13	171.1750		171.1750		A
AIR TO GROUND	14	173.1000		173.1000		A
9. Prepared By (Coos FPA)			Approved By (Planning Section Chief)		Date	Time
ROBERT HANCOCK			JILL JOHNSON		10/10/2023	1900

Division/Group Assignment List (ICS 204 WF)

Controlled Unclassified Information//Basic

1. Incident Name:				3.		
FLAT/ANVIL				Branch:		Division/Group
2. Operational Period: DAY				CFPA		CFPA GROUP
Date/Time From: 10/11/2023 0700 WED		Date/Time To: 10/11/2023 1900 WED		ANVIL FIRE		
4. Operations Personnel						
FIELD OPS SECTION CHIEF		AARON ROWE		PLANNING OPS SECTION CHIEF		KURT RANTA MIKE DAVIS (T)
GROUP SUPERVISOR		DAVID BROWN, BRETT WEIDEMILLER MARCUS EBERLEIN (T)		SAFETY OFFICER		TROY CORN, JACK CATES COUGAN CAROTHERS (T)
AIR SUPPORT GROUP SUPERVISOR		MATT KAMPF (t)				
5. Resources Assigned this Period						
Strike Team / Task Force / Resource Designator		LWD	Leader	Number Persons	Drop Off PT./Time	Pick Up PT./Time
O-10023 TFLD (T)		10/14	IAN QUIMBY	1	ANVIL ICP/0700	ANVIL ICP/1900
O-10025 TFLD		10/14	KEITH TEAGUE	1	ANVIL ICP/0700	ANVIL ICP/1900
O-10011 DIVS (T)		10/18	MARCUS EBERLEIN	1	ANVIL ICP/0700	ANVIL ICP/1900
O-10028 TFLD N (T)		10/17	AMBER NELSON	1	ANVIL ICP/0700	ANVIL ICP/1900
O-10030 HEQB (T)		10/23	TOBIN SMITH	1	ANVIL ICP/0700	ANVIL ICP/1900
O-10024 HEQB		10/14	GENTRY THOMPSON	1	ANVIL ICP/0700	ANVIL ICP/1900
O-10011 HEQB		10/12	KIMBERLY FRAME	1	ANVIL ICP/0700	ANVIL ICP/1900
O-10031 FFT1 (T)		10/21	JESSE OROZCO	1	ANVIL ICP/0700	ANVIL ICP/1900
E-10021 VUTV CFPA UTV #1					ANVIL ICP/0700	ANVIL ICP/1900
E-10022 VUTV CFPA UTV #2					ANVIL ICP/0700	ANVIL ICP/1900
E-10023 VUTV CFPA UTV #3					ANVIL ICP/0700	ANVIL ICP/1900
E-10033 VUTV GOLD BEACH FIRE DEPT					ANVIL ICP/0700	ANVIL ICP/1900
E-10025 VATV ODF IRA GRAYBACK 219802		10/11			ANVIL ICP/0700	ANVIL ICP/1900
E-10016 LOW1 WATERMAN TRUCKING #1		10/11			ANVIL ICP/0700	ANVIL ICP/1900
E-10017 LOW1 WATERMAN TRUCKING #2		10/11			ANVIL ICP/0700	ANVIL ICP/1900
O-408 REMS 24 / BACKCOUNTRY RESCUE LLC		10/13	COLLIN VLASS	4	ANVIL ICP/0700	ANVIL ICP/1900
8. Division/Group Communication Summary						
Function	Channel	RX Frequency N/W	RX Tone/NAC	TX Frequency N/W	TX Tone/NAC	Mode
TACTICAL	1	168.050	110.9	168.050	110.9	
COMMAND	11	168.0625	110.9	162.5375	110.9	
AIR TO GROUND	13	171.1750		171.1750		A
AIR TO GROUND	14	173.1000		173.1000		A
9. Prepared By (Coos FPA)			Approved By (Planning Section Chief)		Date	Time
ROBERT HANCOCK			JILL JOHNSON		10/10/2023	1900

1. INCIDENT NAME	2. OPS PERIOD DATE	START TIME	END TIME	SUNRISE	SUNSET
Flat Fire & Anvil Fire	10/11/23	0700	2000	0728	1845 (5S6)

<p>3. REMARKS (Safety Notes, Hazards) ICP Operational Briefing 0700/Helibase Briefing 0800</p> <p>HAZARDS/WATCHOUTS: Power Lines, Wildland/Urban Interface, gusty erratic winds, smoke, high density altitudes, potential for rapid changes to ceiling/visibility.</p> <p>Helicopter operations TBD</p> <p>Please send all aircraft costs to: helibase manager at anvilhelibase@gmail.com and Anvil Fire finance at 2023.anvil.finance@firenet.gov</p>	<p>4. READY ALERT AIRCRAFT</p> <p>Initial Attack: As requested by dispatch.</p> <p>Medivac: H-0HQ USFS Short-Haul, Located Anvil Helibase</p> <p>Medic 911 Commercial</p>	 <p>TFR: 3/7849 (Anvil) TFR Freq: 132.6750 9000' msl (0800-1900)</p>
--	---	--

6. PERSONNEL	NAME	PHONE #	7. FREQUENCIES	VHF-AM	VHF-FM
Air Operations Branch Director			A/A Anvil Fire (TFR) A/A Anvil Fire (Rotor) A/A Anvil Fire (Briefing)	132.6750 121.1750 123.8750	
Air Support Group Supervisor (t)	Matt Kampf	928-821-2856	A/G Anvil Fire (Primary) A/G Anvil Fire (Secondary)		171.1750 173.1000
Helicopter Coordinator			Medivac Air Ambulance VMED 29 Medivac Air Ambulance VMED 28 (HEAR)		155.3475 Tone 156.7 RX/TX 155.3400 no Tone
Helibase Manager (Anvil Helibase)	Marc (Boomer) Rudkin	307-287-0440	North IA A/G 62 North IA A/A (Primary) North IA A/A (Secondary)	124.475 132.725	169.3625

9. HELICOPTERS		Codes for Remarks: C=Cargo P=Passengers B=Bucket SN=Snorkel R=Rappel SH=Short Haul E=Extraction M=Medical Evacuation H=Hoist PSD=Aerial Ignition											
FAA N#	RO #	TY	MAKE/MODEL	BASE	AVAIL	REMARKS	FAA N#	RO #	TY	MAKE/MODEL	BASE	AVAIL	REMARKS
N405AJ	A-157	1	CH-47D	Anvil HB (5S6)	0700	SN, C	N350HQ	A-176	3	AS 350 B3	Anvil HB (5S6)	0700	C, P, B, M, SH

10. UNMANNED AIRCRAFT SYSTEMS (UAS)				
CALL SIGN	TYPE	MAKE/MODEL	PERSONNEL	REMARKS

11. AVIATION LOCATIONS					
LOCATION	ELEVATION	LATITUDE X LONGITUDE	LOCATION	ELEVATION	LATITUDE X LONGITUDE
Anvil Helibase (5S6)	213ft	42°51.4559' N x 124°31.1052' W	Catching Creek CFPA HB	205ft	43°00.452' N x 124°245.4800' W

INCIDENT RADIO COMMUNICATIONS PLAN (ICS 205)

Controlled Unclassified Information//Basic

1. Incident Name:	2. Date/Time Prepared:	3. Operational Period: DAY	
FLAT/ANVIL	Date: 10/10/2023 Time: 2000	Date/Time From: 10/11/2023 0700 WED	Date/Time To: 10/11/2023 1900 WED

4. Basic Radio Channel Use:

Zone Group	Ch #	Function	Channel Name/Trunked Radio System Talkgroup	Assignment	RX Freq	RX Tone/NAC	TX Freq	TX Tone/NAC	Mode (A,D, or M)	Remarks
1	1	TACTICAL	TAC 1	CFPA N/S	168.0500 N	110.9	168.0500 N	110.9	A	
1	2	TACTICAL	TAC 2		168.2000 N	110.9	168.2000 N	110.9	A	
1	3	TACTICAL	TAC 3	CONT	168.6000 N	110.9	168.6000 N	110.9	A	
1	4	TACTICAL	TAC 4	DIV A/L	166.7250 N	110.9	166.7250 N	110.9	A	
1	5	TACTICAL	TAC 5	DIV T/Z	166.7750 N	110.9	166.7750 N	110.9	A	
1	6	TACTICAL	TAC 6	DIV R, D/W	168.2500 N	110.9	168.2500 N	110.9	A	
1	7	COMMAND	CMD 7	DIV D/W	170.9750 N	110.9	168.7000 N	110.9	A	REPEATER @ LAKE OF WOODS LO
1	8	COMMAND	CMD 9	DIV D/W	170.0125 N	110.9	165.2500 N	110.9	A	REPEATER @ GRIZZLY MNT
1	9	COMMAND	CMD 11	DIV D/W	171.0375 N	110.9	162.1875 N	110.9	A	REPEATER @ IRON MNT
1	10	COMMAND	CMD 12	DIV A/L	170.4500N	110.9	168.1000 N	110.9	A	REPEATER @ FATHER MNT
1	11	COMMAND	CMD 13	BAER, CONT, A/L, R, T/Z	168.0625 N	110.9	162.5375 N	110.9	A	REPEATER @ GRASSY KNOB
1	12	COMMAND	CMD 14	BAER, CONT, R, T/Z	167.8375 N	110.9	162.5625 N	110.9	A	REPEATER @ EDISON BUTTE
1	13	AIR TO GROUND	A/G PRI	ALL DIVISIONS	171.1750 N		171.1750 N		A	AIR TO GROUND PRIMARY
1	14	AIR TO GROUND	A/G SEC	AIR TO GROUND	173.1000 N		173.1000 N		A	AIR TO GROUND SECONDARY
1	15	AIR TO GROUND	VMED 29		155.3475 N		155.3475 N	156.7	A	AIR AMBULANCE
1	16	AIR GUARD	AIR GUARD	ALL DIVISIONS	168.6250 N		168.6250 N	110.9	A	EMERGENCY A/G

5. Special Instructions:

6. Prepared By (Communications Unit Leader)	Name: MISSY PARKER	Signature: <i>Missy Parker</i>
ICS 205	IAP Page	Date/Time: 10/10/2023 2000

INCIDENT RADIO COMMUNICATIONS PLAN (ICS 205)

Controlled Unclassified Information//Basic

1. Incident Name:	2. Date/Time Prepared:	3. Operational Period: DAY	
FLAT/ANVIL IA	Date: 10/10/2023 Time: 2000	Date/Time From: 10/11/2023 0700 WED	Date/Time To: 10/11/2023 1900 WED

4. Basic Radio Channel Use:										
Zone Group	Ch #	Function	Channel Name/Trunked Radio System Talkgroup	Assignment	RX Freq	RX Tone/NAC	TX Freq	TX Tone/NAC	Mode (A,D, or M)	Remarks
IA	1	COMMAND	IRON		170.3750 N	67.0	164.1250 N	74.4	A	RSF NF REPEATER
IA	2	COMMAND	LOW		171.5500 N	67.0	168.7500 N	85.4	A	RSF NF REPEATER
IA	3	COMMAND	BEARCAMP		171.5500 N	67.0	168.7500 N	79.7	A	RSF NF REPEATER
IA	4	COMMAND	SNOWCAMP		171.5500 N	67.0	168.7500 N	97.4	A	RSF NF REPEATER
IA	5	COMMAND	MT EMILY		171.5500 N	67.0	168.7500 N	118.8	A	RSF NF REPEATER
IA	6	COMMAND	GRIZZLY		171.5500 N	67.0	168.7500 N	91.5	A	RSF NF REPEATER
IA	7	COMMAND	EDEN		170.3750 N	67.0	164.1250 N	67.0	A	RSF NF REPEATER
IA	8	COMMAND	BLM NINE		172.4500 N		166.3500 N	114.8	A	BLM REPEATER
IA	9	COMMAND	CUR SO		151.2050 N	141.3	159.3750 N	162.2	A	CURRY COUNTY REPEATER
IA	10	COMMAND	CUR DIR		151.2050 N	141.3	151.2050 N	141.3	A	CURRY COUNTY TAC
IA	11	TACTICAL	RSF PROJ		169.1750 N	67.0	169.1750 N	67.0	A	RSF TAC
IA	12	TACTICAL	RSF TAC1		167.4250 N	67.0	167.4250 N	67.0	A	RFS TAC
IA	13	TACTICAL	RV TAC 1		154.2800 N		154.2800 N		A	RSF TAC
IA	14	TACTICAL	ODF RED		151.3400 N	156.7	151.3400 N	156.7	A	ODF TAC
IA	15	AIR TO GROUND	A/G 62		169.3625 N		169.3625 N		A	PRIMARY RSF NF AIR TO GROUND
IA	16	AIR GUARD	AIRGUARD	ALL RESOURCES	168.6250 N		168.6250 N	110.9	A	EMERGENCY AIR CONTACT ONLY

5. Special Instructions:		
6. Prepared By (Communications Unit Leader)	Name: MISSY PARKER	Signature: <i>Missy Parker</i>
ICS 205	IAP Page	Date/Time: 10/10/2023 2000

SUPPRESSION REPAIR QUICK GUIDE – ANVIL FIRE
Full Repair Plan is Available at the READ Tent
Contact: Jeremy Gooding – L-READ(T). Ph: (808) 281-4781

Suppression repair is intended to mitigate or eliminate resource impacts caused by fire suppression activities and to restore the area to its natural appearance.

Weed Wash:

- Use Weed Wash Stations and do not transport contaminated material from one part of the fire to another. Also required on Demob.
- Weed wash is most important coming **out** of contaminated areas and **before** moving into clean areas.
- **Prevention** is the most powerful tool we have for managing invasive species like Gorse.

Repairing Line

- Pull berms back into the line, uniformly distributing soil and organic material to re-establish natural contours.
- Place or scatter available slash, trees, limbs, and tops to obliterate and blend the line while also providing cover for erosion mitigation.
- Attempt to blend slash into surrounding landscape as much as possible.
- Block access by unauthorized motor vehicles at potential entry points using woody material, boulders, or any locally available material.
- Provide drainage where needed with water bars to standard specifications.
- Chipped material piles need to be less than 4 inches in depth.
- On dozer line, install water bars on slopes greater than 45 percent. See Repair Plan for specifications.

Sensitive Areas:

- Repair within sensitive areas that were impacted during suppression actions require on-site REAF/ARCH. Check Field Maps for “monitor required”.
- Look for flagging: Orange and black polka dot and yellow flagging marks resource areas to protect. Do not disturb.

Ditches, Culverts, and Drainages:

- Return features to proper functional state.
- Clean inlets and outlets
- Establish drain dips.
- Restore new outer berms to pre-fire condition.
- Make sure ditches are clean and functioning.

See Anvil Suppression Repair Plan for specs on:

- Staging Areas/Drop Points
- Road repair and Road Used as Line
- Helispots
- Fences

Thank you for protecting our resources.

Demob List for Wednesday 10/11/2023

ANVIL FIRE			
EQUIPMENT			
E-234	0815	(SKG2)	DC FIRE LLC
E-392	0830	(CHP3)	AXSUS ENTERPRISES
E-28	1900	(WEED)	OUTBACK FIREFIGHTING
OVERHEAD			
O-424	0800	(SOF1)	CAROTHERS, COUGAN
O-426	0815	(FOBS)	ERDODY, TODD
O-336.100	1700	(INCM)	MOFFITT, KENT M
O-368	1700	(RCDM)	APACHITO, GREGO

Demob List for Thursday 10/12/2023

ANVIL FIRE			
CREWS			
C-57	0800	(CR2I)	A.S.I. ARDEN SOLUTIONS 12A
EQUIPMENT			
E-75	0600	(WTS2)	ANGEL WINGS
OVERHEAD			
O-409	0800	(MESU)	BACKCOUNTRY RESCUE LLC
O-233	0815	(MESU)	RANGER MOUNTAIN RESCUE
O-226	0845	(EMPF)	ADVENTURE MEDICS, MATHEW WALSH
O-443	0900	(FACL)	LIPP, KELSEY ELIZABETH
O-491	1700	(SEC1)	GUSSE, WALKER
FLAT FIRE			
OVERHEAD			
O-904 (VIRTUAL)	2200	(EQTR)	GOEDERT, NATASHA



Demob List for Friday 10/13/2023

ANVIL FIRE			
CREWS			
C-59	0700	(CR2I)	CR2I - GRAYBACK FORESTRY, INC. NCC
C-60	0730	(CR2I)	CR2I - GRAYBACK FORESTRY, INC. NCC
C-62	0800	(CR2I)	PATRICK ENVIRONMENTAL, INC. NCC
EQUIPMENT			
E-3	0700	(AMB2)	CERTIFIED PARAMEDICS RESPONSE
E-108	0730	(CHP3)	WEST COAST REFORESTATION
E-159	0800	(CHP2)	JO INTERNATIONAL
E-285	0830	(SKID)	DAVIS CORP
E-180	0900	(VUTV)	CM BACKCOUNTRY
E-232	0915	(PUP1)	ROBIN WINSTON
OVERHEAD			
O-431	0600	(INCM)	HERNANDEZ, MARK ALLAN
O-299	0700	(EMPF)	FRONT LINE EMS
O-370	0730	(ABRO)	KIMPEL, SARAH ANN
O-460	0745	(HEQB)	CAMACHO-LOPEZ, JOSE G
O-366	0800	(REAF)	WEBSTER, RYAN
O-372	0815	(RCDM)	AYALA-ASTORGA, MARIA
O-402	0830	(SECM)	WEBB, REBECCA
O-242	1700	(HEQB)	SHIELDS, ANDREW
O-498	1800	(SEC1)	KNISLEY, JEFF
O-375	2000	(REAF)	SCHWINDT, KAILYN
FLAT FIRE			
OVERHEAD			
O-868	0845	(REAF)	INCE-JOHANNSEN, TARA



Flat / Anvil Fires

Demob Check-Out Form

Pick up Demob Check-Out form at BRIEFING (IAP) or in PLANS to begin the process

RO # _____ Resource Name _____ Fire: _____ Date: _____

Initial

Follow these steps in the order below:

- _____ 1. **Weed Wash** – ALL line resources that went off-road will need to go through a Weed Wash in your specific fire location. **If not needed, proceed to step 2.**
- _____ 2. **Ground support** – Contractors must stop to sign their release inspection. The inspection is optional for agency resources. **Agency resources proceed to step 3.**
- _____ 3. **Supply** – Return any items you checked out. All units must have an initial from SUPPLY confirming all equipment has been returned.
- _____ 4. **Communications** – Return any items you checked out. All units must have an initial from COMMUNICATIONS confirming all radio equipment has been returned.
- _____ 5. **Finance** – Proceed to finance to receive your final timesheet. Having ALL your times turned in and up to date will GREATLY speed up the process.
- _____ 6. **Demob – Final step.** Return completed Demob Check-Out form and any Documentation to Demob/Check-in. Documentation can also be emailed to 2023.anvil.demob@firenet.gov. Call Demob at 206-473-9053 with your estimated time of departure, arrival time and destination. You will not be released from the incident with Dispatch until this is completed.

ALL AIR TRAVELERS

Submit your air request 72 hours prior to flight date through the QR code on the IAP Cover. Call 206-473-9053 for any questions or assistance.

NIGHT SHIFT PERSONNEL

All night shift personnel coming off the line will be required to meet work/rest requirements before completing the Demob process.



Human Resources Message

October 11, 2023



Zero Tolerance for Illegal Non-prescription Drugs or Alcohol!

As a reminder to everyone working on this incident, we have zero tolerance for the illegal use of non-prescription drugs or alcohol. The use, sale, purchase, transfer, or possession of any illegal substances that cause impairment, or any legal, non-medically authorized substances that cause impairment, is strictly prohibited on this fire assignment.

The safety of our workforce is the number one priority of this team and of our agency administrators. Please do not put yourself or others at risk. Always be fit for duty, take care of yourselves, and look out for each other.

If you have any questions related to your fire assignment, please reach out to me or any member of our team. We are here for your support.



Please stay safe and have a great and productive day!

Contact Information - Human Resource Specialist: Susie Manezes
Cell Phone: 602-571-9327
Email: smanezes@blm.gov

Diversity, Teamwork, Appropriate Behavior, Mutual Respect...You Make the Difference!

WHY WE WEED WASH?

Scan the QR code to find out. Hint: it's not to make your truck look pretty!



<http://bit.ly/anvil-weed-wash>

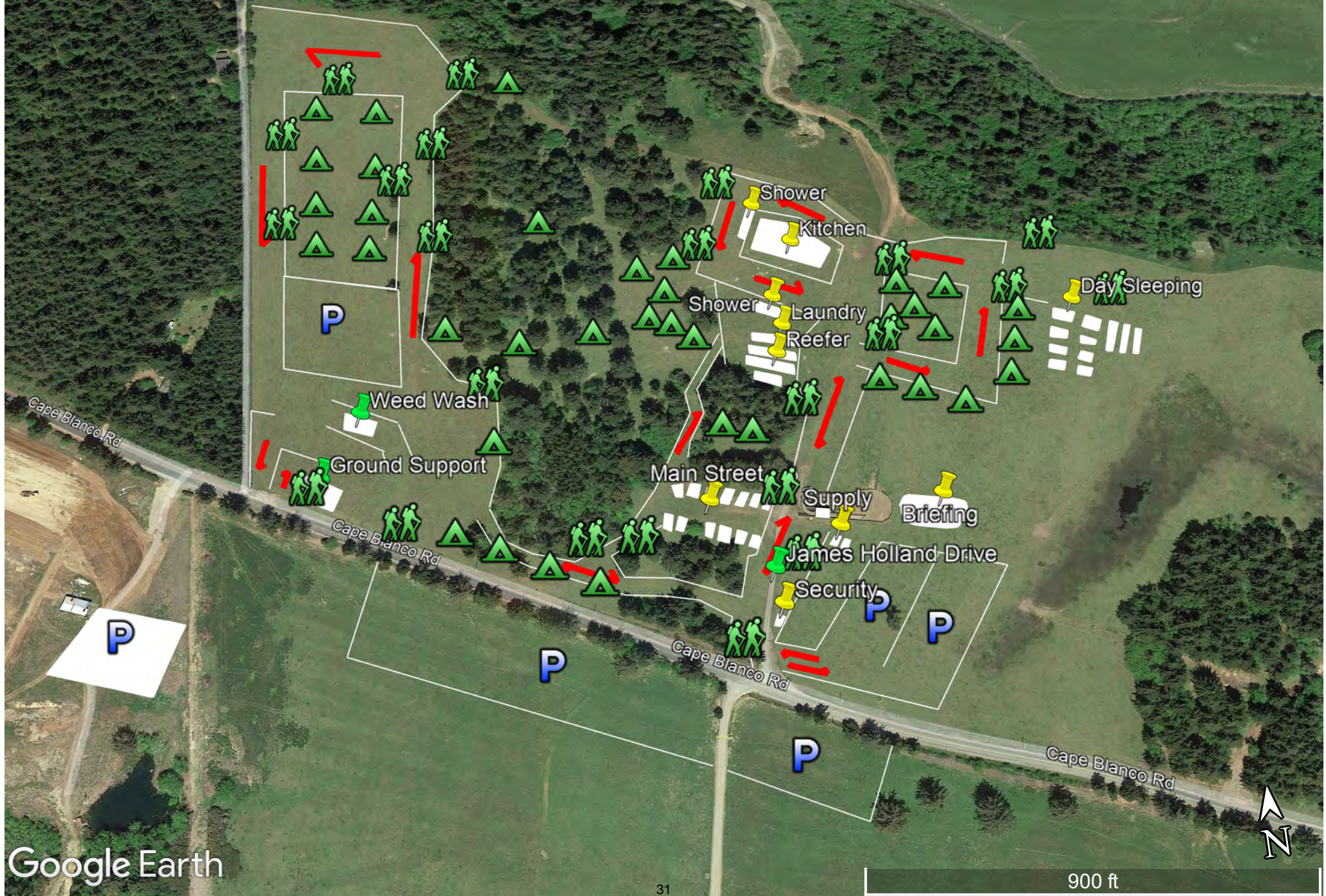
Thank you to the resources who have taken the time to visit the weed wash daily. It truly will make a difference for the community.

LOGISTICS TIMES

SUPPLY	0600-2100	BREAKFAST	0530-0900
LAUNDRY	0500-2200	DINNER	1730-2100
LUNCHES/ICE	0500-2100	<u>SHOWERS</u>	
WEED WASH	0700-1900	ELDORADO	0500-1100, 1300-2200
FUEL TRUCKS	0600-1200, 1400-2000	GRAYBACK	0500-1200, 1400-2200

Anvil Fire Camp 2023

Legend





In Camp Medical Procedure

If Red or Yellow

Yell for help and stay with patient

Provide first aid as appropriate

Call Anvil communications at **971-713-0379** or by radio

If Green

Go to camp medical tent for eval and treatment



EMERGENCY PLAN INCIDENT WITHIN AN INCIDENT

ON SCENE INCIDENT COMMANDER

In the event of an accident or medical incident of any size, your primary responsibility is to ENSURE that the victim(s) receive prompt and effective Triage, Treatment, Extrication and Transport.

- **ENSURE THE MEDICAL INCIDENT REPORT IN THE INCIDENT ACTION PLAN IS BEING USED AND FOLLOWED- *IF DETERMINED TO BE A GREEN, DO NOT DECLARE EMERGENCY TRAFFIC AND ONLY COMPLETE LINE 1-4 ON MIR*.**
- Conduct size-up of the incident nature of accident, number type of resources involved, latitude and longitude location (DD°MMM.MM format): notify incident communications center and supervisor, request assistance as needed.
- Order and coordinate medical and support response to the accident.
- Evaluate special needs (law enforcement, haz mat, etc.).
- Clear the command frequency if medical emergency, coordinate with incident communications and air attack for air medical transportation needs.
- Preserve and photograph the scene for accident investigation.
- Remain aware of surroundings and the status of the main incident (delegate personnel to monitor the main fire) to ensure safety of medical treatment personnel.
- Until relieved, supervise and manage all personnel involved at the incident scene.

MEDICAL PLAN (ICS 206 WF)

Incident/Project Name				Operational Period				
Flat/Anvil				10/11/2023 0700-1900				
Ambulance Services								
Name	Complete Address	Phone	Advanced Life Support (ALS)					
			Yes	No				
Cal-Ore	1235 Oregon St Port Orford, OR 97465	Command 911	X					
Air Ambulance Services								
Name	Phone	Location:	Capability					
Mercy Flight	Use VMED 29 Air to Ground	Medford, OR	Critical Care Medic/RN Night Capable 100x100 LZ					
Central Montana Helitack	A/G Primary	Anvil Helibase	Short Haul Capacity EMT Daytime Use Only					
REACH	Use VMED 29 Air to Ground	Brookings, OR	Critical Care Medic/RN Night Capable 100x100 LZ					
Hospitals								
Name Complete Address	Coordinate Standard Degrees Decimal Minutes DD° MM.MMM' N - Lat DD° MM.MMM' W - Long		Travel Time From ICP: Air Gnd		Phone	Helipad Yes No		Level of Care Facility
	Lat:							
Southern Coos Hospital 900 11 th St SE Bandon, OR	43°6.7563'N	124°24.1235'W	15 min	30 min	541-347-2426	X		Critical Access
Curry General 942204 th St Gold Beach, OR	42°24.678'N	124°25.106'W	20 min	48 min	541-247-3080	X		Level 4
Bay Area Hospital 1775 Thompson Rd Coos Bay, OR	43°22.978'N	124°13.928'W	28 min	1.25 hr	541-269-8086	X		Level 3
Asante Rogue Regional 2825 E Barnett Rd Medford, OR	44°19.050'N	122°49.839'W	48 min	3.5 hr	541-789-7132	X		Level 2
Legacy Emanuel 2801 N Gantenbien Portland, OR	45°32.668'N	122°40.293'W	1.75 hr	4.75 hr	503-413-4121	X		Level 1 Trauma Burn Center
Division Branch Group	Capability			Personnel				
Div A/L	4x4 ALS transport capable ambulance 4x4 Vehicle with ALS equipment			AMBO 15 – Gary Ford EMPF (E-3) MED Team 22 – Cameron Coleman EMTF (O-409)				
	H-10		H-50		H-55			
	42°44.937'N 124°24.989'W		42°47.458'N 124°23.636 W		42°48.476'N 124°24.578'W			

Div R	4x4 ALS transport capable ambulance 4x4 Truck and UTV, ALS, with Technical Rescue	AMBO 7 – Francisco Pacheco EMPF (E-163) REMS 21 – Brennan Holloway EMTF (O-407) H-40 42°47.155'N 124°19.894'W		
Div T/Z	4x4 ALS transport capable ambulance 4x4 Vehicle with ALS equipment 4x4 Vehicle with ALS equipment 4x4 Vehicle with BLS equipment 4x4 Truck and UTV, ALS, with Technical Rescue	Ambo 10-Sara Fisher EMPF (E-268) MED Team 3 – Thomas Yager EMPF (O-233) MED Team 17 – Brenton Matthews EMPF (O-299) Thayne Cunningham EMTF (O-155) REMS 27 – Avery Mason (O-367) H-10 H-30 42°44.937'N 42°40.729'N 124°24.989'W 124°19.060'W		
Contingency	UTV, ALS ALS Rope Rescue, ALS ALS	Med Team 4: O-333 Brandon Morgan EMPF Med Team 13: E-340 Brian Hoffower EMPF REMS 14: O-369 Miles Hackney EMTF AMBO 5: E-269 Henry Drane EMPF		
CFPA Group	4x4 Truck and UTV, ALS, with Technical Rescue	REMS 24 – Collin Vlass EMPF (O-408)		
Div D/W FLAT FIRE	4x4 ALS transport capable ambulance 4x4 Vehicle with ALS equipment 4x4 Vehicle with ALS equipment	AMBO 9 – Britney Powell EMPF (E-429) MED Team 16 – Jake McQueen EMPF (O-310) Matthew Walsh EMPF (O-226) H-140 H-125 H-115 42°33.176'N 42°30.558'N 42°24.329'N 124°03.552'W 124°03.724 124°11.987'W		
ICP	4x4 ALS transport capable ambulance Medical Treatment Tent & Supplies	AMBO 6 Ethan Biederman (E-287) MEDL Curt McKinney (O-336.85) MEDL-t Brian Spendlove (O-489.66)		
Prepared By (Medical Unit Leader)		Date/Time	Reviewed By (Safety Officer)	Date/Time
Diana Braun <i>Diana Braun</i>		10/10/2023	Jack Cates <i>Jack Cates</i>	10/10/2023

ICS 206 WF (1/14)

MEDICAL PLAN (ICS 206 WF)

Controlled Unclassified Information//Basic

Medical Incident Report

FOR A NON-EMERGENCY INCIDENT, WORK THROUGH CHAIN OF COMMAND TO REPORT AND TRANSPORT INJURED PERSONNEL AS NECESSARY.

FOR A MEDICAL EMERGENCY: IDENTIFY ON SCENE INCIDENT COMMANDER BY NAME AND POSITION AND ANNOUNCE "MEDICAL EMERGENCY" TO INITIATE RESPONSE FROM IMT COMMUNICATIONS/DISPATCH.

Use the following items to communicate situation to communications/dispatch.

1. CONTACT COMMUNICATIONS / DISPATCH (Verify correct frequency prior to starting report)

Ex: "Communications, Div. Alpha. Stand-by for Emergency Traffic."

2. INCIDENT STATUS: Provide incident summary (including number of patients) and command structure.

Ex: "Communications, I have a Red priority patient, unconscious, struck by a falling tree. Requesting air ambulance to Forest Road 1 at (Lat./Long.) This will be the Trout Meadow Medical, IC is TFLD Jones. EMT Smith is providing medical care."

Severity of Emergency / Transport Priority	<input type="checkbox"/> RED / PRIORITY 1 Life or limb threatening injury or illness. Evacuation need is IMMEDIATE <i>Ex: Unconscious, difficulty breathing, bleeding severely, 2° – 3° burns more than 4 palm sizes, heat stroke, disoriented.</i> <input type="checkbox"/> YELLOW / PRIORITY 2 Serious Injury or illness. Evacuation may be DELAYED if necessary. <i>Ex: Significant trauma, unable to walk, 2° – 3° burns not more than 1-3 palm sizes.</i> <input type="checkbox"/> GREEN / PRIORITY 3 Minor Injury or illness. Non-Emergency transport <i>Ex: Sprains, strains, minor heat-related illness.</i>	
Nature of Injury or Illness & Mechanism of Injury		<i>Brief Summary of Injury or Illness (Ex: Unconscious, Struck by Falling Tree)</i>
Transport Request		<i>Air Ambulance / Short Haul/Hoist Ground Ambulance / Other</i>
Patient Location		<i>Descriptive Location & Lat. / Long. (WGS84)</i>
Incident Name		<i>Geographic Name + "Medical" (Ex: Trout Meadow Medical)</i>
On-Scene Incident Commander		<i>Name of on-scene IC of Incident within an Incident (Ex: TFLD Jones)</i>
Patient Care		<i>Name of Care Provider (Ex: EMT Smith)</i>

3. INITIAL PATIENT ASSESSMENT: Complete this section for each patient as applicable (start with the most severe patient)

Patient Assessment: See IRPG page 106

Treatment:

4. TRANSPORT PLAN:

Evacuation Location (if different): (Descriptive Location (drop point, intersection, etc.) or Lat. / Long.) Patient's ETA to Evacuation Location:

Helispot / Extraction Site Size and Hazards:

5. ADDITIONAL RESOURCES / EQUIPMENT NEEDS:

Example: Paramedic/EMT, Crews, Immobilization Devices, AED, Oxygen, Trauma Bag, IV/Fluid(s), Splints, Rope rescue, Wheeled litter, HAZMAT, Extrication

6. COMMUNICATIONS: Identify State Air/Ground EMS Frequencies and Hospital Contacts as applicable

Function	Channel Name/Number	Receive (RX)	Tone/NAC *	Transmit (TX)	Tone/NAC *
COMMAND					
AIR-TO-GRND					
TACTICAL					

7. CONTINGENCY: Considerations: If primary options fail, what actions can be implemented in conjunction with primary evacuation method? Be thinking ahead.

8. ADDITIONAL INFORMATION: Updates/Changes, etc.

REMEMBER: Confirm ETA's of resources ordered. Act according to your level of training. Be Alert. Keep Calm. Think Clearly. Act Decisively.

Controlled Unclassified Information//Basic