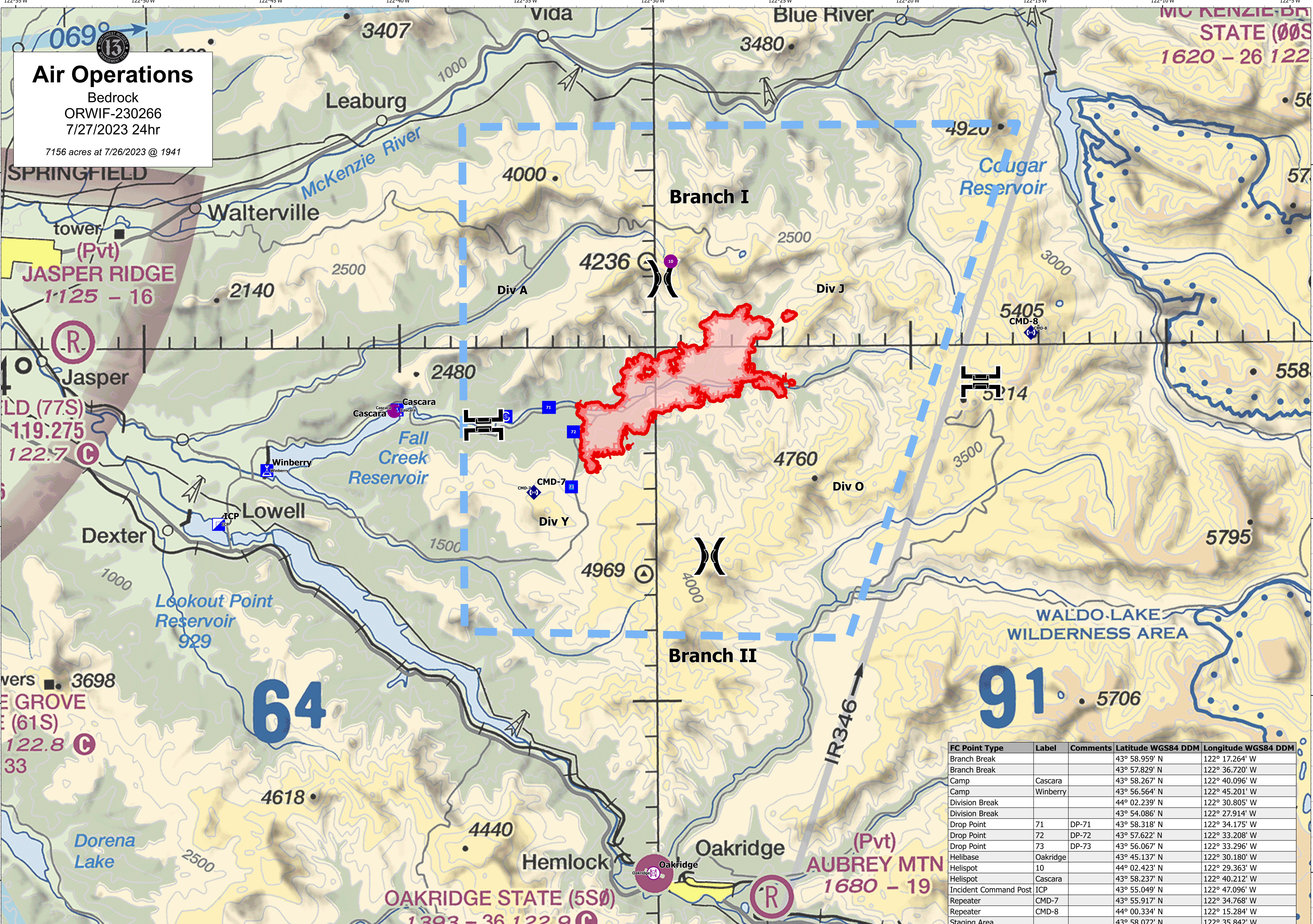
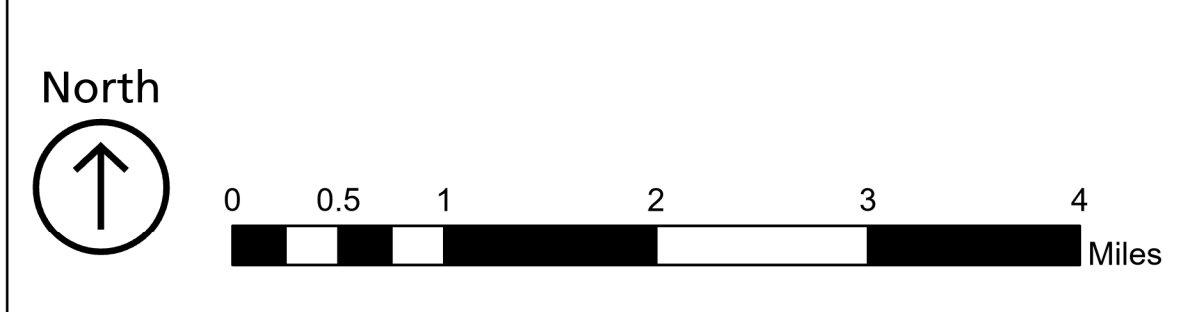


Air Operations
 Bedrock
 ORWIF-230266
 7/27/2023 24hr
 7156 acres at 7/26/2023 @ 1941



FC Point Type	Label	Comments	Latitude WGS84 DDM	Longitude WGS84 DDM
Branch Break			43° 58.959' N	122° 17.264' W
Branch Break			43° 57.829' N	122° 36.720' W
Camp	Cascara		43° 58.267' N	122° 40.096' W
Camp	Winberry		43° 56.564' N	122° 45.201' W
Division Break			44° 02.239' N	122° 30.805' W
Division Break			43° 54.086' N	122° 27.914' W
Drop Point	71	DP-71	43° 58.318' N	122° 34.175' W
Drop Point	72	DP-72	43° 57.622' N	122° 33.208' W
Drop Point	73	DP-73	43° 56.067' N	122° 33.296' W
Helibase	Oakridge		43° 45.137' N	122° 30.180' W
Helispot	10		44° 02.423' N	122° 29.363' W
Helispot	Cascara		43° 58.237' N	122° 40.212' W
Incident Command Post	ICP		43° 55.049' N	122° 47.096' W
Repeater	CMD-7		43° 55.917' N	122° 34.768' W
Repeater	CMD-8		44° 00.334' N	122° 15.284' W
Staging Area			43° 58.072' N	122° 35.842' W



- Polygon Type: Wildfire Daily, Fire Perimeter
- Air Operations: Helispot, Helibase
- Assignment Breaks: Division Break, Branch Break
- Logistics: Incident Command Post
- Drop Point: Drop Point, Camp
- Staging Area: Staging Area, Communications, Repeater
- Air Ops: Temporary Flight Restriction
- FC Line Type: Uncontained
- Air Operations: Helispot, Helibase
- Assignment Breaks: Division Break, Branch Break
- Logistics: Incident Command Post
- Drop Point: Drop Point, Camp
- Staging Area: Staging Area, Communications, Repeater