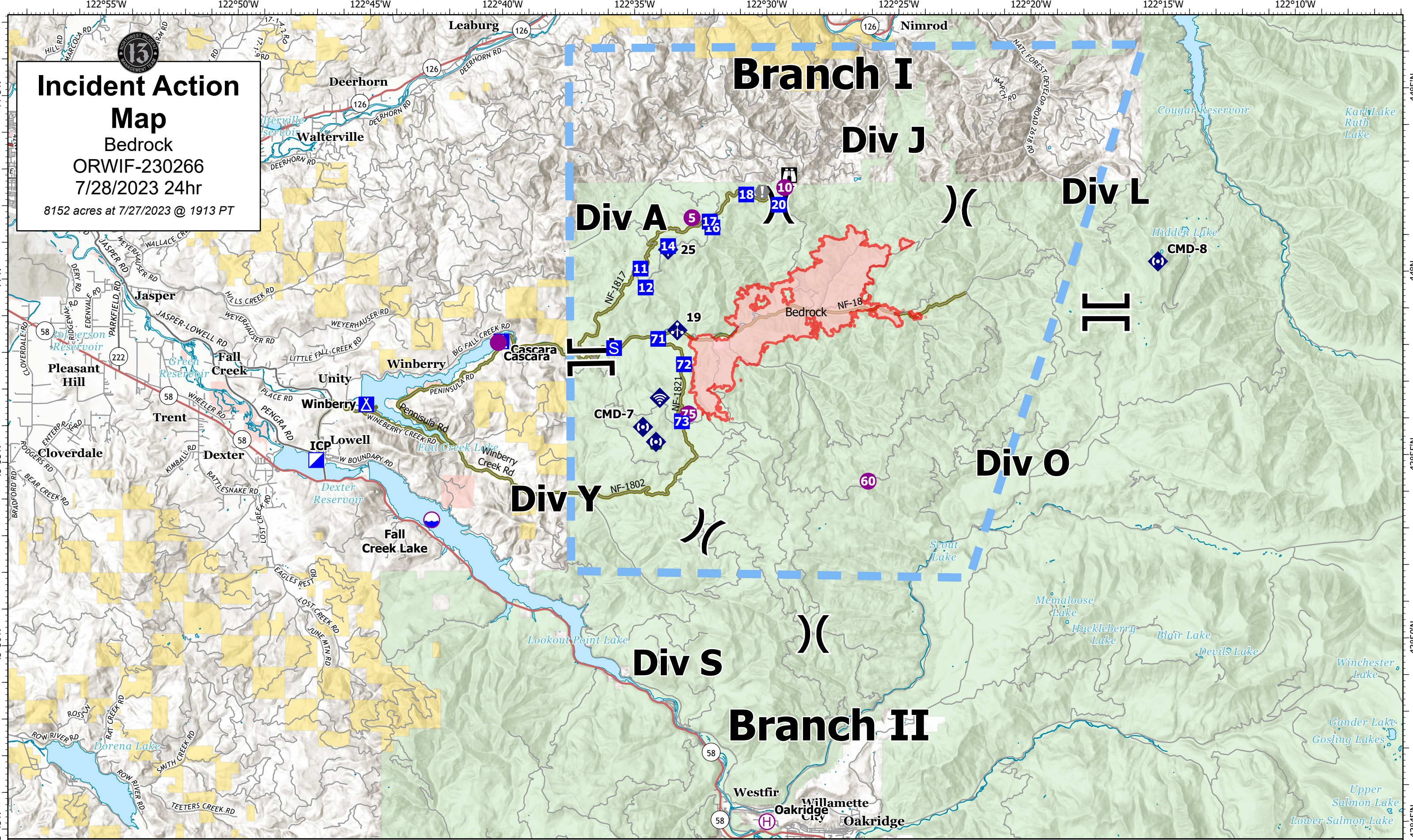


Incident Action Map

Bedrock
 ORWIF-230266
 7/28/2023 24hr
 8152 acres at 7/27/2023 @ 1913 PT



- | | | | | | | | | |
|----------|----------------|--------------|-----------------------|---------------|---------------------|------------------------------|-------------------------------|---------------|
| Dip Site | Division Break | Branch Break | Incident Command Post | Staging Area | Structure Wrap | Internet Access | Wildfire Daily Fire Perimeter | BLM |
| Helispot | | | Drop Point | Lookout | Mobile Weather Unit | Repeater | Major Incident Routes | ANCSA/Private |
| Helibase | | | Camp | Value at Risk | | Temporary Flight Restriction | City, County, Other | USFS |
| | | | | | | | State | DOD |

