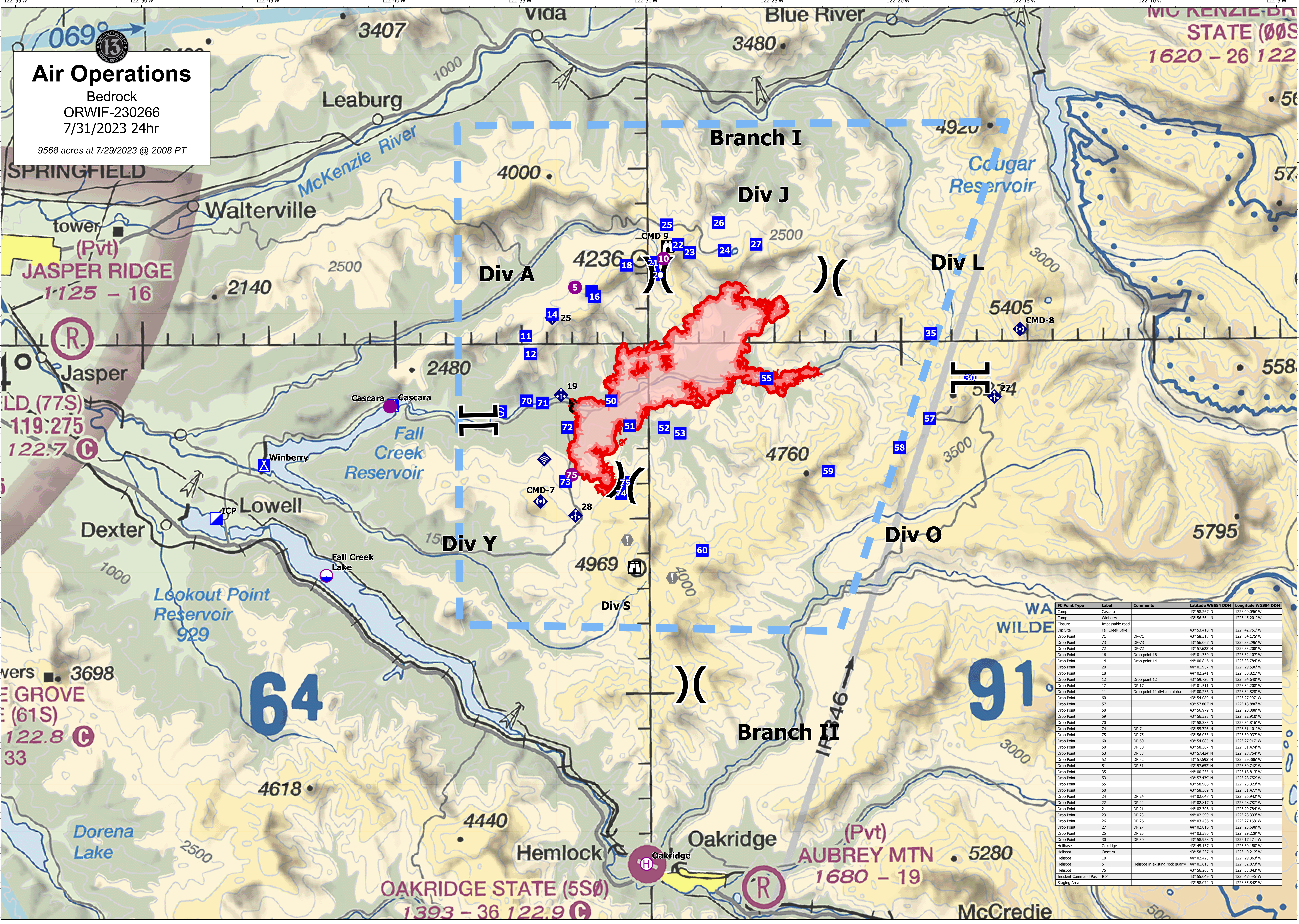


Air Operations
 Bedrock
 ORWIF-230266
 7/31/2023 24hr
 9568 acres at 7/29/2023 @ 2008 PT



FC Point Type	Label	Comments	Latitude WGS84 DDM	Longitude WGS84 DDM
Camp	Cascara		43° 58.267' N	122° 40.096' W
Camp	Winberry		43° 56.564' N	122° 45.201' W
Closure	Impassable road			
Dip Site	Fall Creek Lake		43° 53.410' N	122° 42.751' W
Drop Point	DP-71		43° 58.318' N	122° 34.175' W
Drop Point	DP-73		43° 56.067' N	122° 33.296' W
Drop Point	DP-72		43° 57.622' N	122° 33.208' W
Drop Point	Drop point 16		44° 01.350' N	122° 32.107' W
Drop Point	Drop point 14		44° 00.846' N	122° 33.784' W
Drop Point	Drop point 20		44° 01.957' N	122° 29.596' W
Drop Point	Drop point 18		44° 02.241' N	122° 30.631' W
Drop Point	Drop point 12		43° 59.720' N	122° 34.640' W
Drop Point	DP 17		44° 01.511' N	122° 32.208' W
Drop Point	Drop point 11 division alpha		44° 00.236' N	122° 34.828' W
Drop Point	DP 60		43° 54.089' N	122° 27.907' W
Drop Point	DP 57		43° 57.802' N	122° 18.886' W
Drop Point	DP 58		43° 56.979' N	122° 20.088' W
Drop Point	DP 59		43° 56.323' N	122° 22.910' W
Drop Point	DP 70		43° 58.383' N	122° 34.816' W
Drop Point	DP 74		43° 55.726' N	122° 31.101' W
Drop Point	DP 75		43° 56.033' N	122° 30.937' W
Drop Point	DP 60		43° 54.085' N	122° 27.917' W
Drop Point	DP 50		43° 58.367' N	122° 31.474' W
Drop Point	DP 53		43° 57.434' N	122° 28.754' W
Drop Point	DP 52		43° 57.593' N	122° 29.386' W
Drop Point	DP 51		43° 57.652' N	122° 30.742' W
Drop Point	DP 35		44° 00.235' N	122° 18.813' W
Drop Point	DP 53		43° 57.439' N	122° 28.752' W
Drop Point	DP 26		44° 03.436' N	122° 25.323' W
Drop Point	DP 50		43° 58.369' N	122° 31.477' W
Drop Point	DP 24		44° 02.647' N	122° 26.942' W
Drop Point	DP 22		44° 02.817' N	122° 28.787' W
Drop Point	DP 21		44° 02.306' N	122° 29.784' W
Drop Point	DP 23		44° 02.599' N	122° 28.333' W
Drop Point	DP 25		44° 03.436' N	122° 25.323' W
Drop Point	DP 27		44° 02.816' N	122° 25.698' W
Drop Point	DP 25		44° 03.386' N	122° 29.229' W
Drop Point	DP 30		43° 58.958' N	122° 17.274' W
Helibase	Oakridge		43° 45.137' N	122° 30.180' W
Helispot	Cascara		43° 58.237' N	122° 40.212' W
Helispot	10		44° 02.423' N	122° 29.363' W
Helispot	5	Helispot in existing rock quarry	44° 01.615' N	122° 32.873' W
Helispot	75		43° 56.265' N	122° 33.043' W
Incident Command Post	ICP		43° 55.049' N	122° 47.096' W
Staging Area			43° 58.072' N	122° 35.842' W

0 0.5 1 2 3 4 Miles

Polygon Type Wildfire Daily Fire Perimeter	Air Operations Dip Site Helispot	Helibase Assignment Breaks Division Break	Branch Break	Logistics Incident Command Post	Drop Point	Staging Area Operations Lookout	Reference Value at Risk	Communications Mobile Weather Unit	Internet Access Repeater	Air Ops Temporary Flight Restriction	FC Line Type Contained Uncontained
---	--	---	--------------	------------------------------------	------------	---------------------------------------	----------------------------	---------------------------------------	-----------------------------	---	--

NW INT 13
7/30/2023 2328
Acres from IR
North American 1983 Datum, Lat/Long Grid