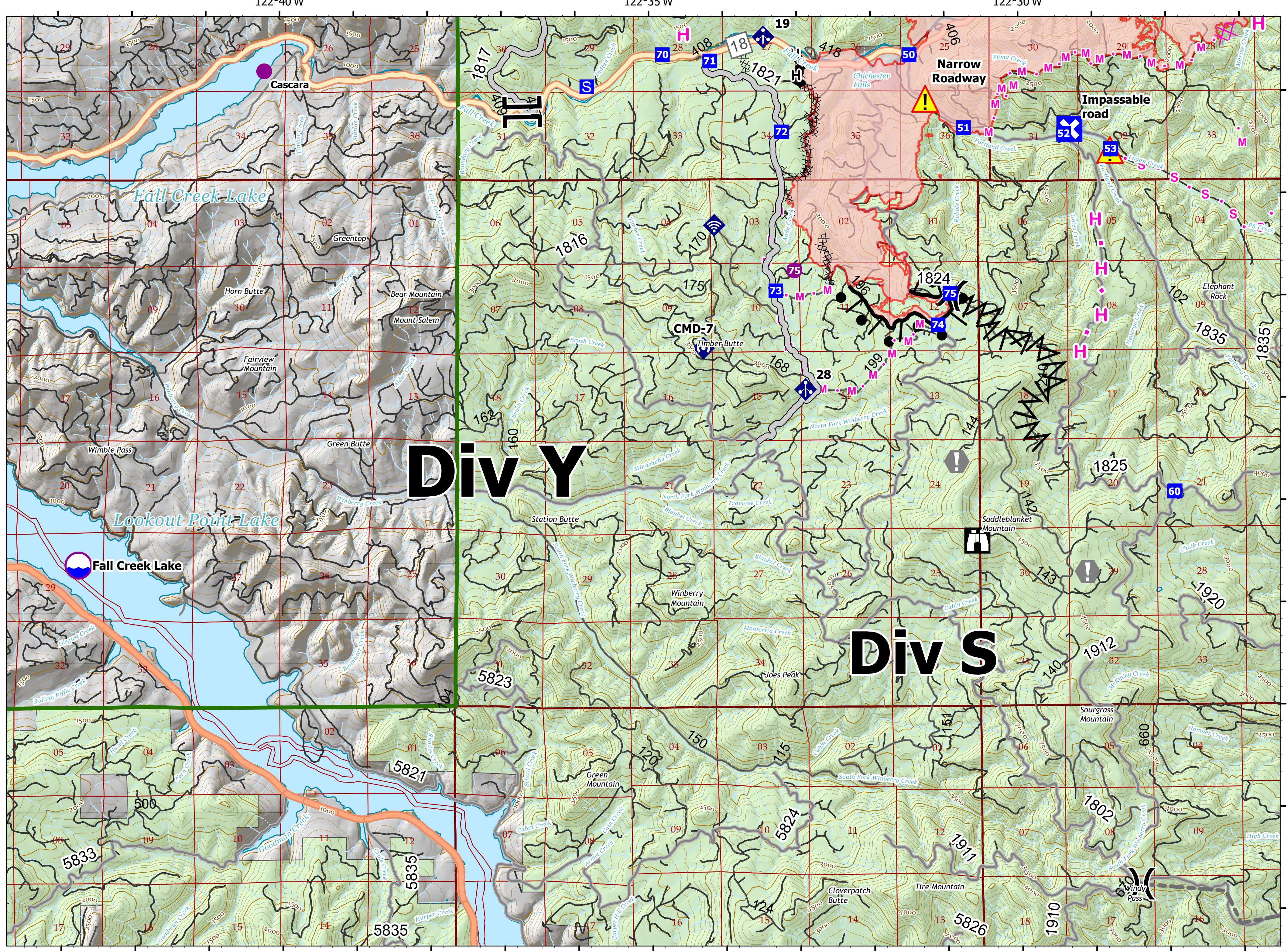


9568 acres at 7/29/2023 @ 2008 PT

Bedrock
ORWIF-230266
7/31/2023 24hr

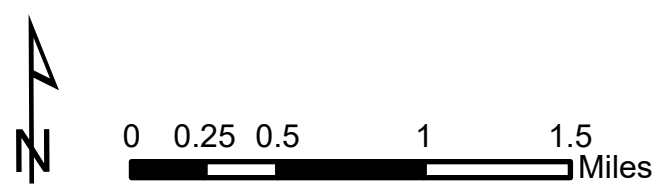
Operations
Div Y/S

NW 1/4 Sec 13
7/31/2023 1631
Acres from IR
North American 1983 Datum, Lat/Long Grid
Labels 5 min, Large tics 1 min, Small tics 10 sec



Div Y

Div S



- | | | | | | | | |
|----------------|--------------|---------------------|-----------------|----------------------|---------------------------------|-------------------------------|---------------|
| Dip Site | Branch Break | Staging Area | Internet Access | Completed Burnout | Planned Dozer Line | Access or Improved Road | Contour 500ft |
| Helispot | Drop Point | Lookout | Repeater | Completed Dozer Line | Planned Hand Line | Other | Contour 100ft |
| Division Break | Closure | Value at Risk | Hazard | Completed Fuel Break | Planned Mixed Construction Line | Contained | |
| | | Mobile Weather Unit | | Completed Hand Line | Planned Secondary Line | Wildfire Daily Fire Perimeter | |

