

Operations
Branch I
Bedrock
ORWIF-230266
7/31/2023 24hr
9568 acres at 7/29/2023 @ 2008 PT

Branch I

Div J

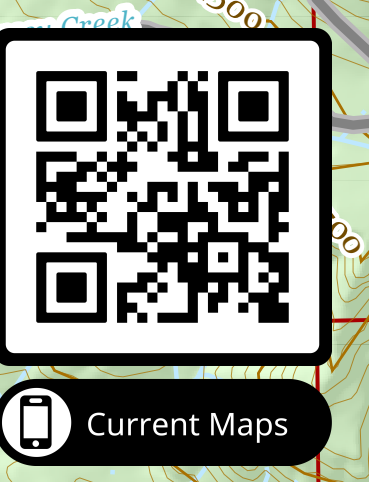
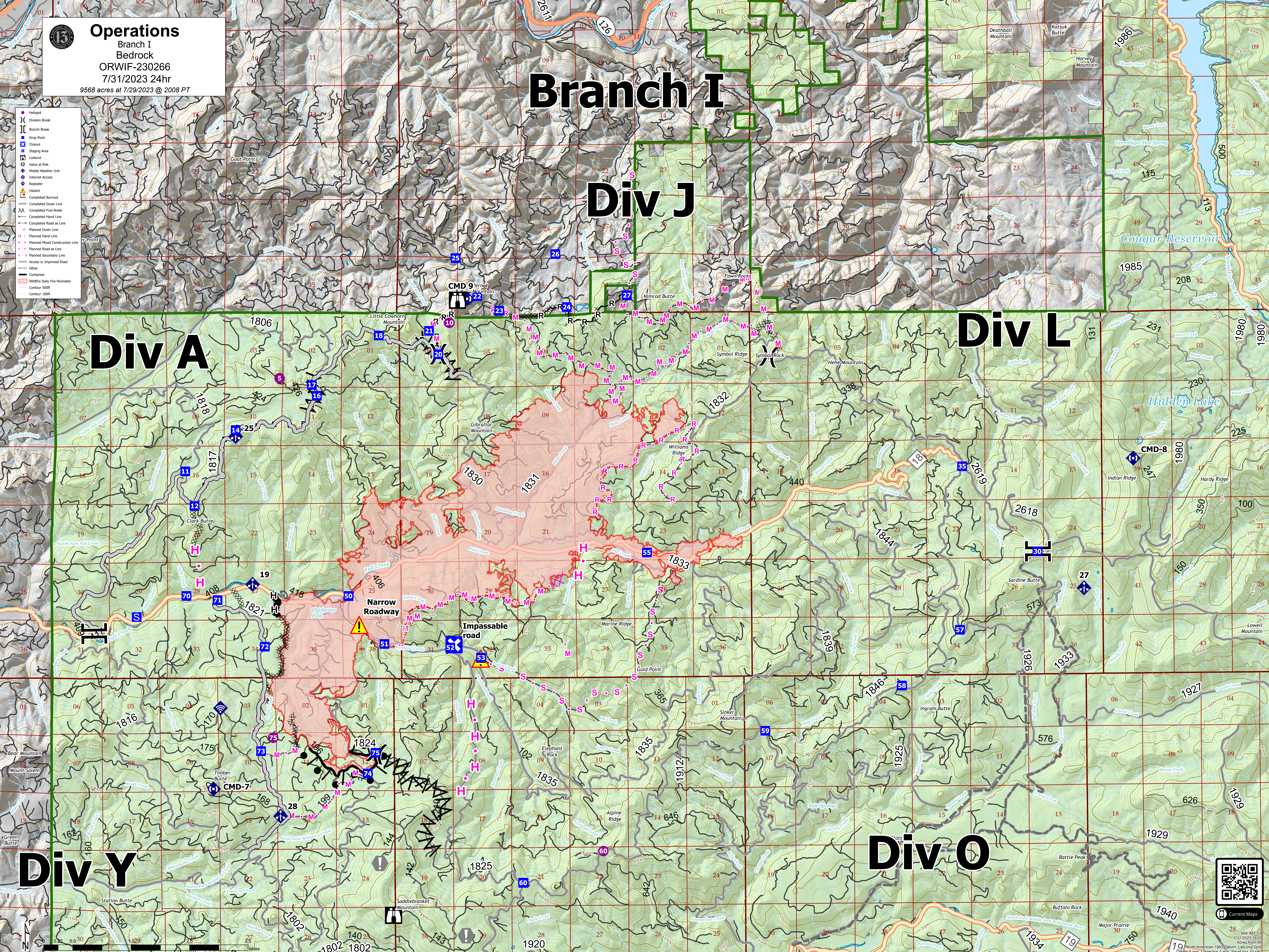
Div L

Div A

Div Y

Div O

- Helispot
- ⌵ Division Break
- ⌵ Branch Break
- ⬇ Drop Point
- ⊠ Closure
- ⊠ Staging Area
- ⊠ Lookout
- ⊠ Value at Risk
- ⊠ Mobile Weather Unit
- ⊠ Internet Access
- ⊠ Responder
- ⊠ Hazmat
- Completed Burnout
- Completed Dozer Line
- Completed Fuel Break
- Completed Hand Line
- Completed Road as Line
- Planned Dozer Line
- Planned Hand Line
- Planned Road Construction Line
- Planned Road as Line
- Planned Secondary Line
- Access or Improved Road
- Other
- Contained
- Wildfire Daily Fire Perimeter
- Contour 500ft
- Contour 100ft



North American 1983 Datum: Lantop Grid
Scale: 1:50,000
NW 1/4, 13
7/31/2023 18:33
Acres from IR