

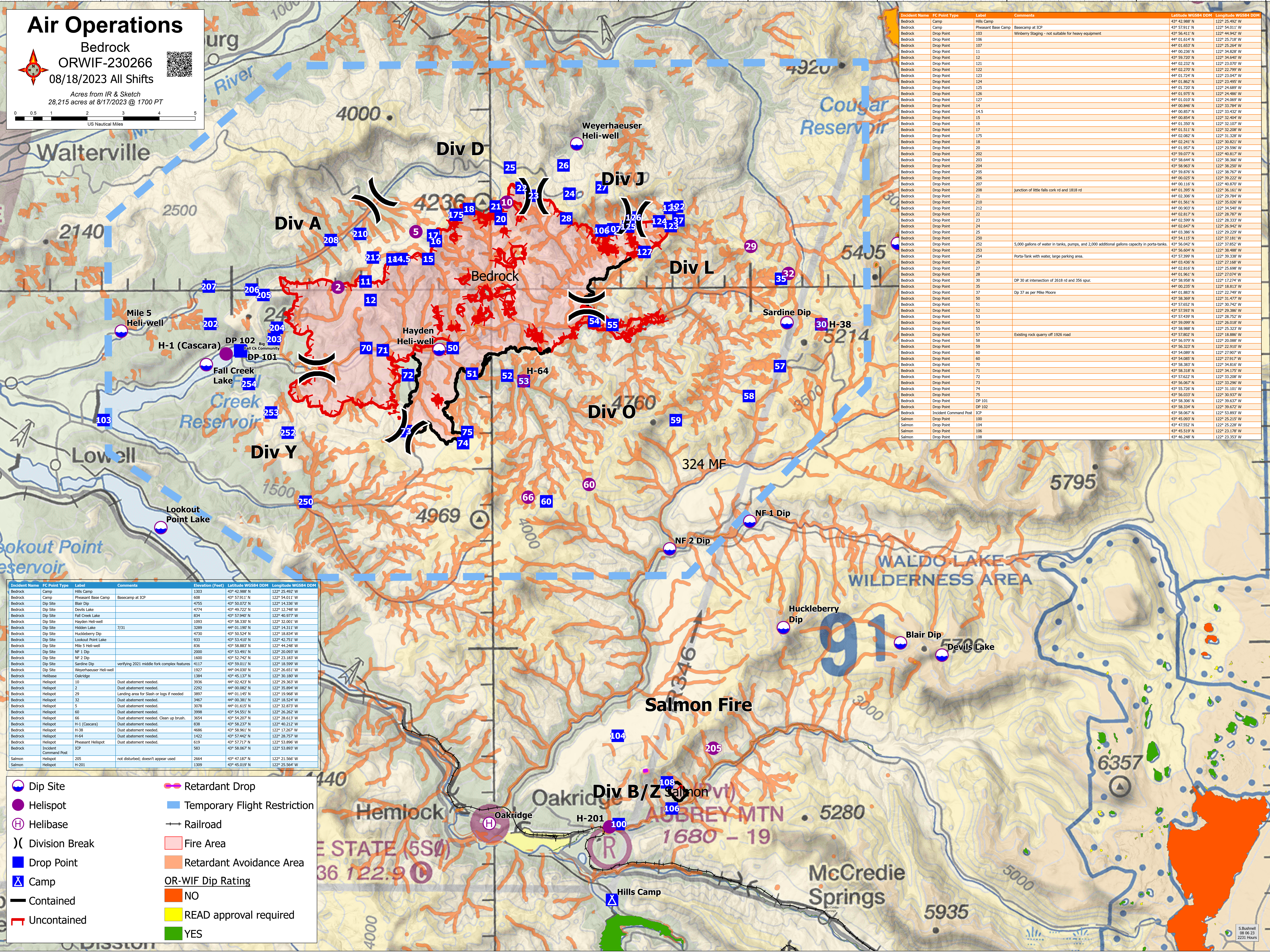
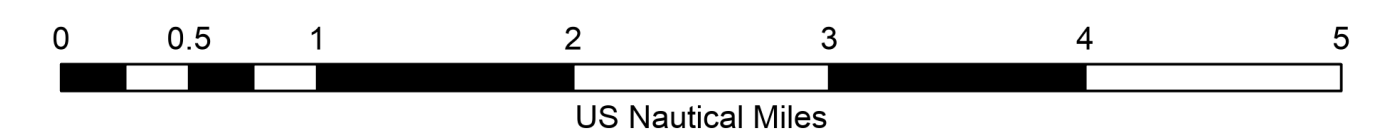
Air Operations



Bedrock
ORWIF-230266
08/18/2023 All Shifts



Acres from IR & Sketch
28,215 acres at 8/17/2023 @ 1700 PT



Incident Name	FC Point Type	Label	Comments	Elevation (feet)	Latitude WGS84 DDM	Longitude WGS84 DDM
Bedrock	Camp	Hills Camp		1303	43° 42.988' N	122° 25.492' W
Bedrock	Camp	Pheasant Base Camp	Basecamp at ICP	608	43° 57.911' N	122° 54.011' W
Bedrock	Dip Site	Blair Dip		4755	43° 50.072' N	122° 14.336' W
Bedrock	Dip Site	Devils Lake		4774	43° 49.722' N	122° 12.748' W
Bedrock	Dip Site	Fall Creek Lake		834	43° 57.940' N	122° 40.977' W
Bedrock	Dip Site	Hayden Heli-well		1993	43° 58.330' N	122° 23.201' W
Bedrock	Dip Site	Hidden Lake	7/31	3289	44° 01.190' N	122° 14.311' W
Bedrock	Dip Site	Huckleberry Dip		4730	43° 50.524' N	122° 18.834' W
Bedrock	Dip Site	Lookout Point Lake		933	43° 53.410' N	122° 42.751' W
Bedrock	Dip Site	Mile 5 Heli-well		836	43° 58.883' N	122° 44.248' W
Bedrock	Dip Site	NF 1 Dip		2000	43° 53.491' N	122° 20.093' W
Bedrock	Dip Site	NF 2 Dip		1600	43° 52.742' N	122° 23.183' W
Bedrock	Dip Site	Sardine Dip	verifying 2021 middle fork complex features	4117	43° 59.011' N	122° 18.599' W
Bedrock	Dip Site	Weyerhaeuser Heli-well		1927	44° 04.030' N	122° 26.651' W
Bedrock	Helibase	Oakridge		1384	43° 45.137' N	122° 30.180' W
Bedrock	Helispot	10	Dust abatement needed.	3936	44° 02.423' N	122° 29.363' W
Bedrock	Helispot	2	Dust abatement needed.	2292	44° 00.082' N	122° 35.894' W
Bedrock	Helispot	29	Landing area for Slash or logs if needed	3897	44° 01.145' N	122° 19.968' W
Bedrock	Helispot	32	Dust abatement needed.	3467	44° 00.381' N	122° 18.524' W
Bedrock	Helispot	5	Dust abatement needed.	3078	44° 01.615' N	122° 32.873' W
Bedrock	Helispot	60	Dust abatement needed.	3998	43° 54.551' N	122° 26.262' W
Bedrock	Helispot	66	Dust abatement needed. Clean up brush.	3654	43° 54.207' N	122° 28.613' W
Bedrock	Helispot	H-1 (Cascara)	Dust abatement needed.	838	43° 58.237' N	122° 40.212' W
Bedrock	Helispot	H-38	Dust abatement needed.	4686	43° 58.961' N	122° 17.267' W
Bedrock	Helispot	H-64	Dust abatement needed.	1422	43° 57.442' N	122° 28.757' W
Bedrock	Helispot	Pheasant Helispot	Dust abatement needed.	619	43° 57.717' N	122° 53.896' W
Bedrock	Incident Command Post	ICP		583	43° 58.067' N	122° 53.893' W
Salmon	Helispot	205	not disturbed; doesn't appear used	2664	43° 47.187' N	122° 21.566' W
Salmon	Helispot	H-201		1309	43° 45.019' N	122° 25.564' W

- Dip Site
- Helispot
- Helibase
- Division Break
- Drop Point
- Camp
- Contained
- Uncontained
- Retardant Drop
- Temporary Flight Restriction
- Railroad
- Fire Area
- Retardant Avoidance Area
- OR-WIF Dip Rating: NO
- READ approval required
- YES

Incident Name	FC Point Type	Label	Comments	Latitude WGS84 DDM	Longitude WGS84 DDM
Bedrock	Camp	Hills Camp		43° 42.988' N	122° 25.492' W
Bedrock	Camp	Pheasant Base Camp	Basecamp at ICP	43° 57.911' N	122° 54.011' W
Bedrock	Drop Point	105	Winberry Staging - not suitable for heavy equipment	44° 01.614' N	122° 25.178' W
Bedrock	Drop Point	106		44° 01.653' N	122° 25.264' W
Bedrock	Drop Point	107		44° 00.236' N	122° 34.828' W
Bedrock	Drop Point	11		44° 59.720' N	122° 34.640' W
Bedrock	Drop Point	12		44° 02.232' N	122° 23.070' W
Bedrock	Drop Point	121		44° 02.270' N	122° 22.799' W
Bedrock	Drop Point	122		44° 01.724' N	122° 23.047' W
Bedrock	Drop Point	123		44° 01.862' N	122° 23.495' W
Bedrock	Drop Point	124		44° 01.720' N	122° 24.689' W
Bedrock	Drop Point	125		44° 01.975' N	122° 24.480' W
Bedrock	Drop Point	127		44° 01.010' N	122° 31.338' W
Bedrock	Drop Point	14		44° 00.846' N	122° 33.784' W
Bedrock	Drop Point	14.5		44° 00.857' N	122° 33.432' W
Bedrock	Drop Point	15		44° 00.854' N	122° 32.404' W
Bedrock	Drop Point	16		44° 01.350' N	122° 32.107' W
Bedrock	Drop Point	17		44° 01.511' N	122° 32.208' W
Bedrock	Drop Point	17.5		44° 02.082' N	122° 31.338' W
Bedrock	Drop Point	18		44° 02.241' N	122° 30.821' W
Bedrock	Drop Point	20		44° 01.957' N	122° 29.596' W
Bedrock	Drop Point	202		43° 59.077' N	122° 40.817' W
Bedrock	Drop Point	203		43° 58.644' N	122° 38.366' W
Bedrock	Drop Point	204		43° 58.963' N	122° 38.250' W
Bedrock	Drop Point	205		43° 59.876' N	122° 38.787' W
Bedrock	Drop Point	206		44° 00.025' N	122° 39.222' W
Bedrock	Drop Point	207		44° 00.116' N	122° 40.870' W
Bedrock	Drop Point	208	junction of little falls cove rd and 1818 rd	44° 01.395' N	122° 36.161' W
Bedrock	Drop Point	21		44° 02.306' N	122° 29.794' W
Bedrock	Drop Point	210		44° 01.561' N	122° 35.020' W
Bedrock	Drop Point	212		44° 00.903' N	122° 34.607' W
Bedrock	Drop Point	22		44° 02.817' N	122° 28.787' W
Bedrock	Drop Point	23		44° 02.599' N	122° 28.333' W
Bedrock	Drop Point	24		44° 02.647' N	122° 26.942' W
Bedrock	Drop Point	25		44° 03.386' N	122° 29.229' W
Bedrock	Drop Point	250	5,000 gallons of water in tanks, pumps, and 2,000 additional gallons capacity in porta-tanks.	43° 54.115' N	122° 37.161' W
Bedrock	Drop Point	252		43° 56.042' N	122° 37.852' W
Bedrock	Drop Point	253		43° 56.064' N	122° 38.488' W
Bedrock	Drop Point	254	Porta-Tank with water, large parking area.	43° 57.399' N	122° 39.338' W
Bedrock	Drop Point	26		44° 03.436' N	122° 27.168' W
Bedrock	Drop Point	27		44° 02.816' N	122° 25.698' W
Bedrock	Drop Point	28		44° 01.961' N	122° 27.074' W
Bedrock	Drop Point	30	DP 30 at intersection of 2618 rd and 356 spur.	43° 58.959' N	122° 37.824' W
Bedrock	Drop Point	35		44° 00.235' N	122° 18.813' W
Bedrock	Drop Point	37	Dp 37 as per Mike Moore	44° 01.883' N	122° 22.749' W
Bedrock	Drop Point	50		43° 58.369' N	122° 31.477' W
Bedrock	Drop Point	51		43° 57.652' N	122° 30.742' W
Bedrock	Drop Point	52		43° 57.593' N	122° 29.386' W
Bedrock	Drop Point	53		43° 57.439' N	122° 28.752' W
Bedrock	Drop Point	54		43° 59.099' N	122° 26.018' W
Bedrock	Drop Point	55		43° 58.988' N	122° 25.223' W
Bedrock	Drop Point	57	Existing rock quarry off 1926 road	43° 57.802' N	122° 18.886' W
Bedrock	Drop Point	58		43° 56.979' N	122° 20.088' W
Bedrock	Drop Point	59		43° 56.323' N	122° 22.910' W
Bedrock	Drop Point	60		43° 54.089' N	122° 27.907' W
Bedrock	Drop Point	60		43° 54.085' N	122° 27.917' W
Bedrock	Drop Point	70		43° 58.383' N	122° 34.816' W
Bedrock	Drop Point	71		43° 58.318' N	122° 34.175' W
Bedrock	Drop Point	72		43° 57.622' N	122° 33.208' W
Bedrock	Drop Point	73		43° 56.067' N	122° 33.286' W
Bedrock	Drop Point	74		43° 55.726' N	122° 31.101' W
Bedrock	Drop Point	75		43° 56.033' N	122° 30.937' W
Bedrock	Drop Point	DP 101		43° 58.306' N	122° 39.637' W
Bedrock	Drop Point	DP 102		43° 58.334' N	122° 39.672' W
Bedrock	Incident Command Post	ICP		43° 58.067' N	122° 53.893' W
Salmon	Drop Point	100		43° 45.093' N	122° 25.215' W
Salmon	Drop Point	104		43° 47.528' N	122° 25.238' W
Salmon	Drop Point	106		43° 45.519' N	122° 23.176' W
Salmon	Drop Point	108		43° 46.248' N	122° 23.353' W