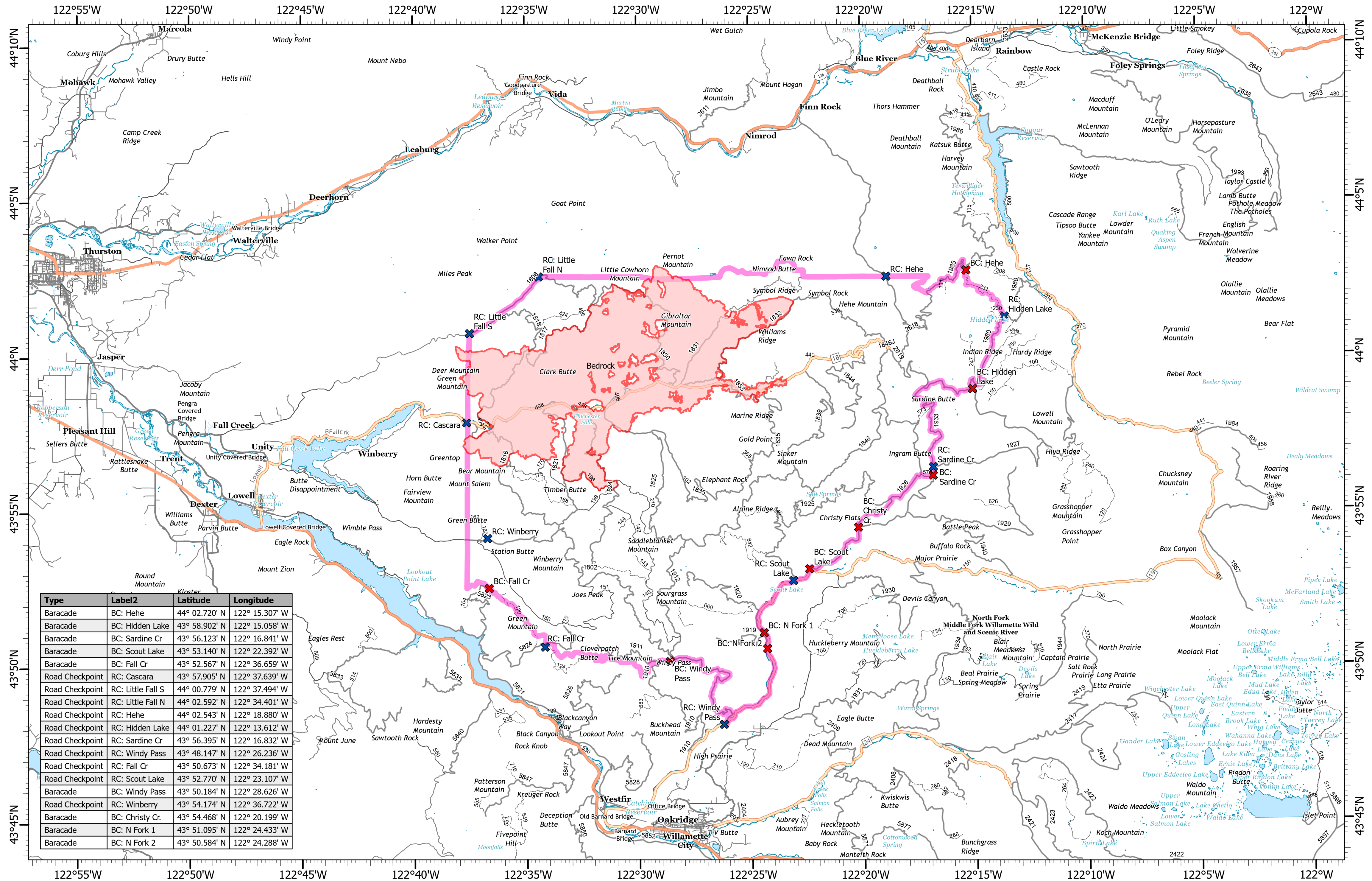


Bedrock Closure Map



Type	Label2	Latitude	Longitude
Barcade	BC: Hehe	44° 02.720' N	122° 15.307' W
Barcade	BC: Hidden Lake	43° 58.902' N	122° 15.058' W
Barcade	BC: Sardine Cr	43° 56.123' N	122° 16.841' W
Barcade	BC: Scout Lake	43° 53.140' N	122° 22.392' W
Barcade	BC: Fall Cr	43° 52.567' N	122° 36.659' W
Road Checkpoint	RC: Cascara	43° 57.905' N	122° 37.639' W
Road Checkpoint	RC: Little Fall S	44° 00.779' N	122° 37.494' W
Road Checkpoint	RC: Little Fall N	44° 02.592' N	122° 34.401' W
Road Checkpoint	RC: Hehe	44° 02.543' N	122° 18.880' W
Road Checkpoint	RC: Hidden Lake	44° 01.227' N	122° 13.612' W
Road Checkpoint	RC: Sardine Cr	43° 56.395' N	122° 16.832' W
Road Checkpoint	RC: Windy Pass	43° 48.147' N	122° 26.236' W
Road Checkpoint	RC: Fall Cr	43° 50.673' N	122° 34.181' W
Road Checkpoint	RC: Scout Lake	43° 52.770' N	122° 23.107' W
Barcade	BC: Windy Pass	43° 50.184' N	122° 28.626' W
Road Checkpoint	RC: Winberry	43° 54.174' N	122° 36.722' W
Barcade	BC: Christy Cr.	43° 54.468' N	122° 20.199' W
Barcade	BC: N Fork 1	43° 51.095' N	122° 24.433' W
Barcade	BC: N Fork 2	43° 50.584' N	122° 24.288' W

Closure Map
 Bedrock
 ORWIF-230266
 08/18/2023 All Shifts
 28,215 acres at 8/17/2023 @ 1700 PT

- ▭ Wildfire Daily Fire Perimeter
- ▭ Closure Area
- ✕ Barcade
- ✕ Road Checkpoint

