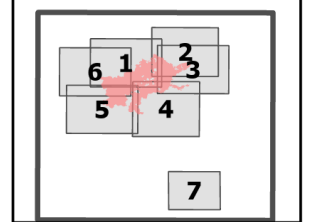


IAP
 Bedrock
 ORWIF-230266
 08/18/2023 All Shifts
 28,215 acres
 8/17/2023 @ 1700 PT

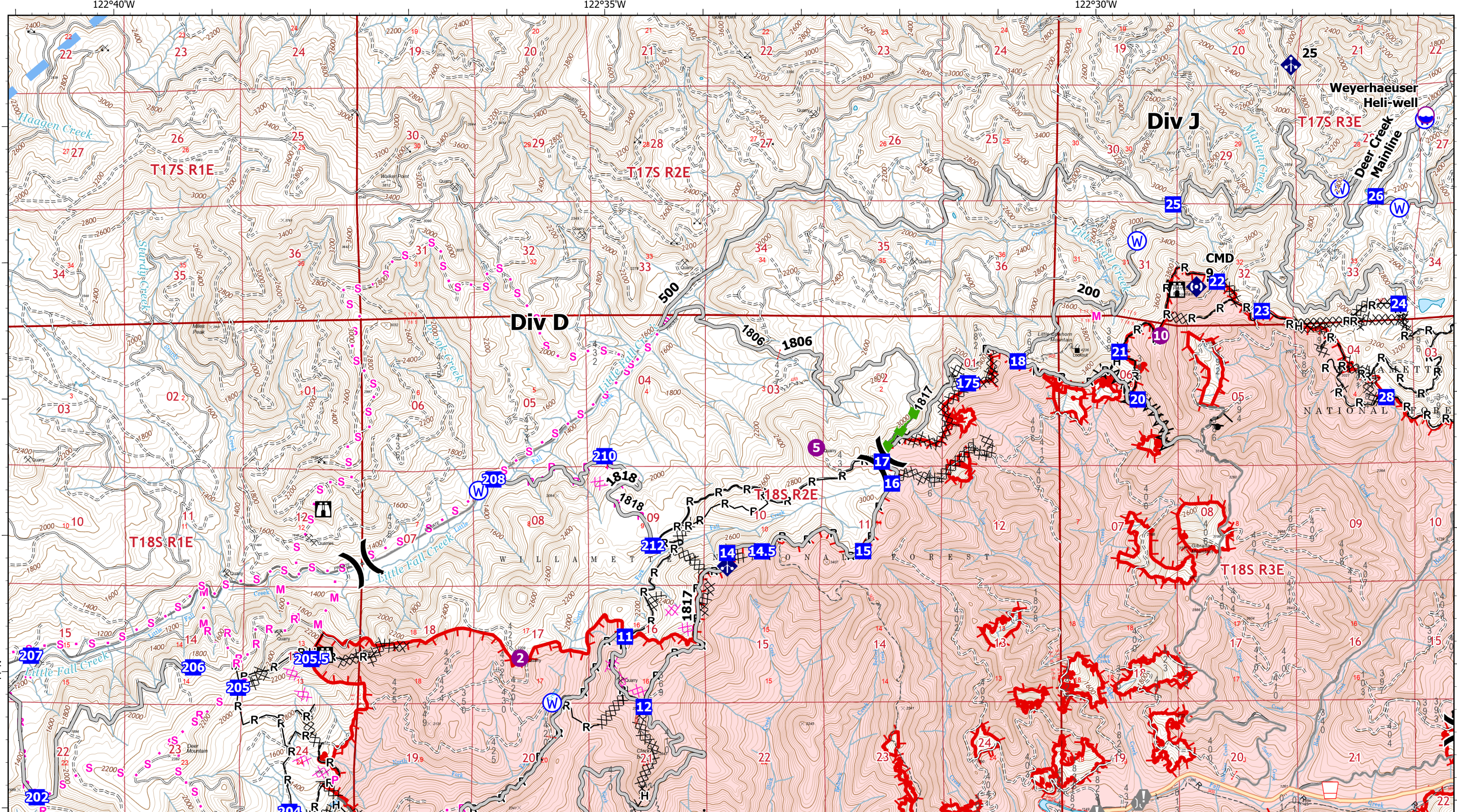
0 0.25 1 1.5 2 2.5 Miles

- Division Break
- Hot Spot - Spot Fire
- Contained
- Uncontained
- Wildfire Daily Fire Perimeter

IAP Map Index ID: Overview



8/18/2023 1657
 Acres from IR & Sketch
 North American 1983 Datum, Lat/Long Grid



IAP
 Bedrock
 ORWIF-230266
 08/18/2023 All Shifts
 28,215 acres
 8/17/2023 @ 1700 PT

0 0.25 0.5 Miles

- | | | | | |
|----------------|---------------------|-----------------------------------|---------------------------------|-------------------------------|
| Dip Site | Bridge | Completed Burnout | Planned Dozer Line | Other |
| Helispot | Mobile Weather Unit | Completed Dozer Line | Planned Mixed Construction Line | Escape Route |
| Division Break | Repeater | Completed Fuel Break | Planned Plow Line | Temporary Flight Restriction |
| Drop Point | Water Source | Completed Hand Line | Planned Road as Line | Wildfire Daily Fire Perimeter |
| Lookout | Contained | Completed Mixed Construction Line | Planned Secondary Line | |
| Value at Risk | Uncontained | Completed Road as Line | Access or Improved Road | |

IAP Map Index ID: Page 1

8/18/2023 1657
 Acres from IR & Sketch
 North American 1983 Datum, Lat/Long Grid

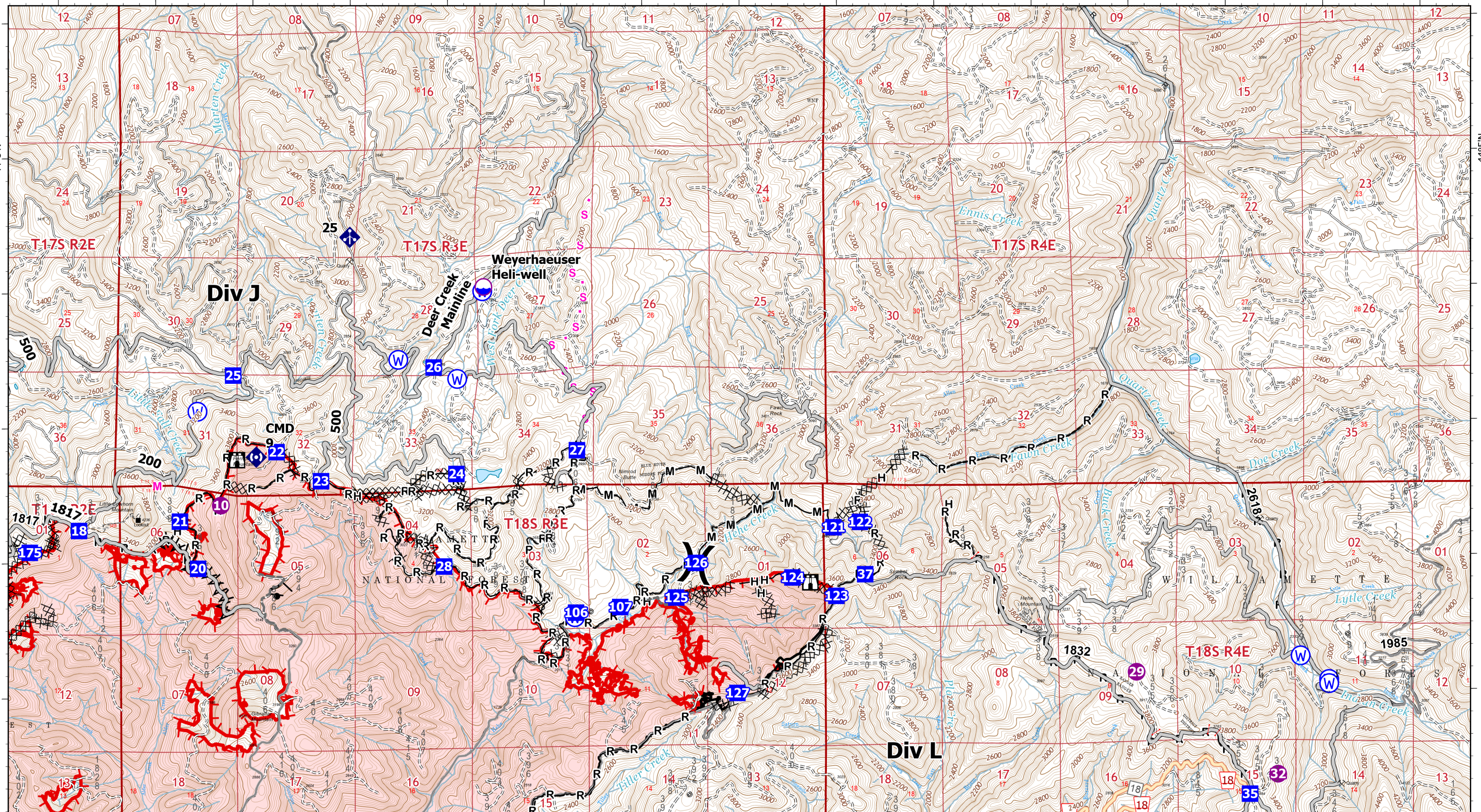
122°30'W

122°25'W

122°20'W

44°5'N

44°5'N

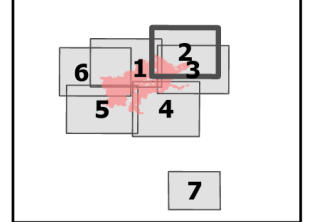


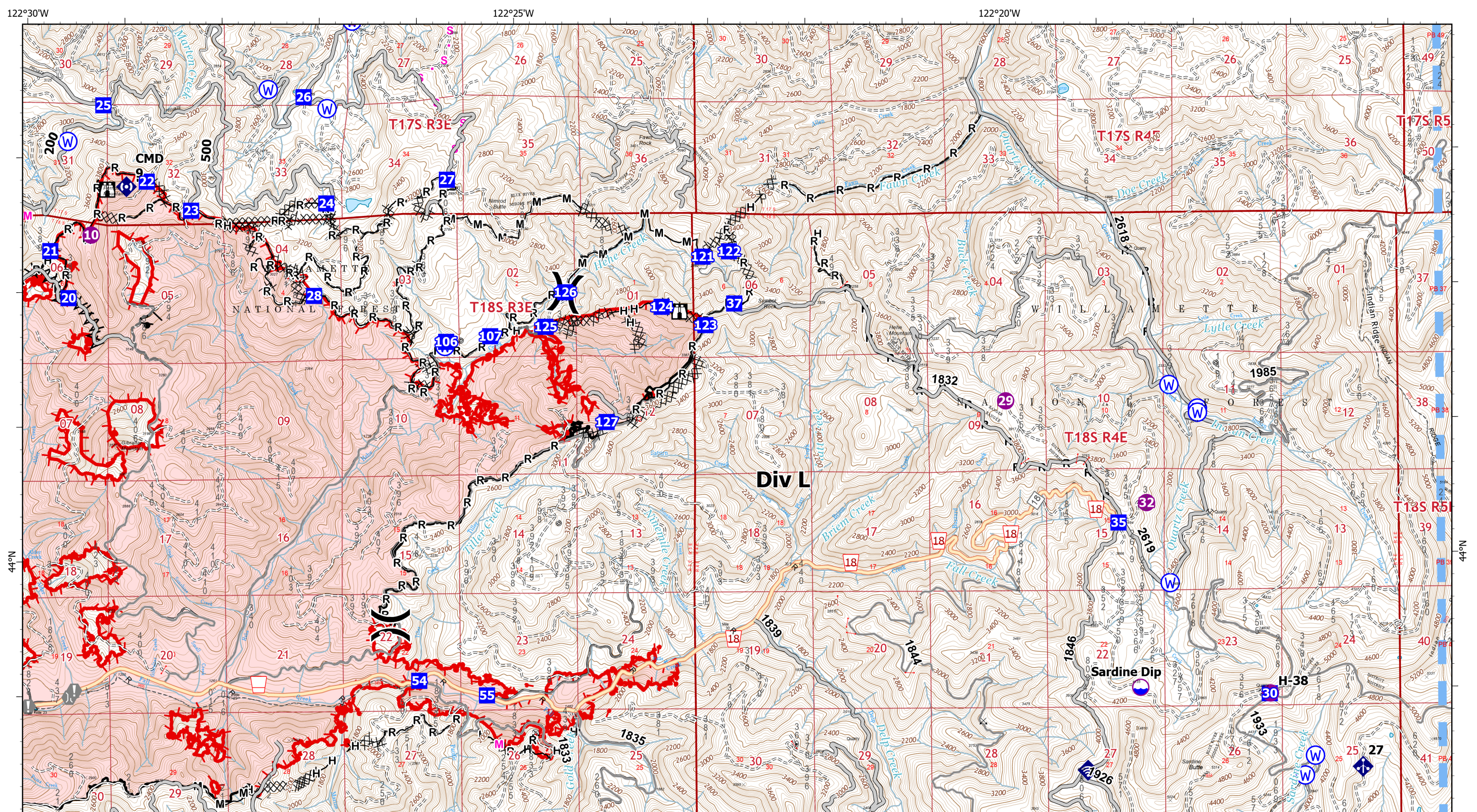
IAP
 Bedrock
 ORWIF-230266
 08/18/2023 All Shifts
 28,215 acres
 8/17/2023 @ 1700 PT

0 0.25 0.5 Miles

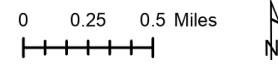
- | | | | |
|---------------------|----------------------|-----------------------------------|-------------------------------|
| Dip Site | Repeater | Completed Fuel Break | Access or Improved Road |
| Helispot | Water Source | Completed Hand Line | Other |
| Division Break | Contained | Completed Mixed Construction Line | Wildfire Daily Fire Perimeter |
| Drop Point | Uncontained | Completed Road as Line | |
| Lookout | Completed Burnout | Planned Mixed Construction Line | |
| Mobile Weather Unit | Completed Dozer Line | Planned Secondary Line | |

IAP Map Index ID: Page 2



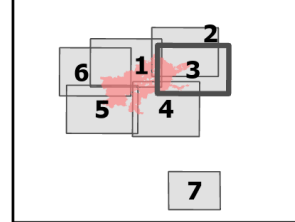


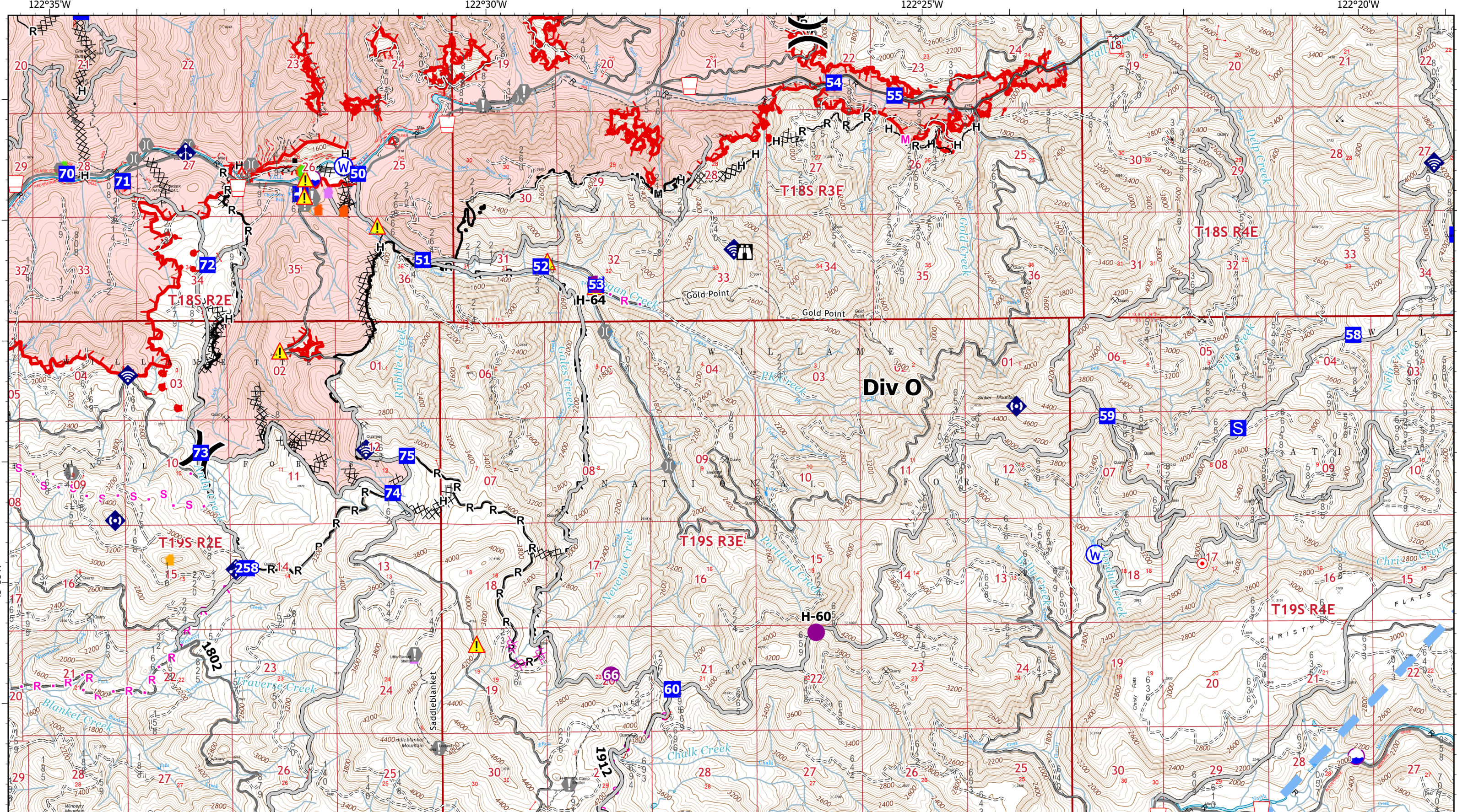
IAP
 Bedrock
 ORWIF-230266
 08/18/2023 All Shifts
 28,215 acres
 8/17/2023 @ 1700 PT



- | | | | | |
|----------------|---------------------|----------------------|-----------------------------------|-------------------------------|
| Dip Site | Value at Risk | Water Source | Completed Fuel Break | Planned Secondary Line |
| Helispot | Bridge | Contained | Completed Hand Line | Access or Improved Road |
| Division Break | Mobile Weather Unit | Uncontained | Completed Mixed Construction Line | Other |
| Drop Point | Internet Access | Completed Burnout | Completed Road as Line | Temporary Flight Restriction |
| Lookout | Repeater | Completed Dozer Line | Planned Mixed Construction Line | Wildfire Daily Fire Perimeter |

IAP Map Index ID: Page 3





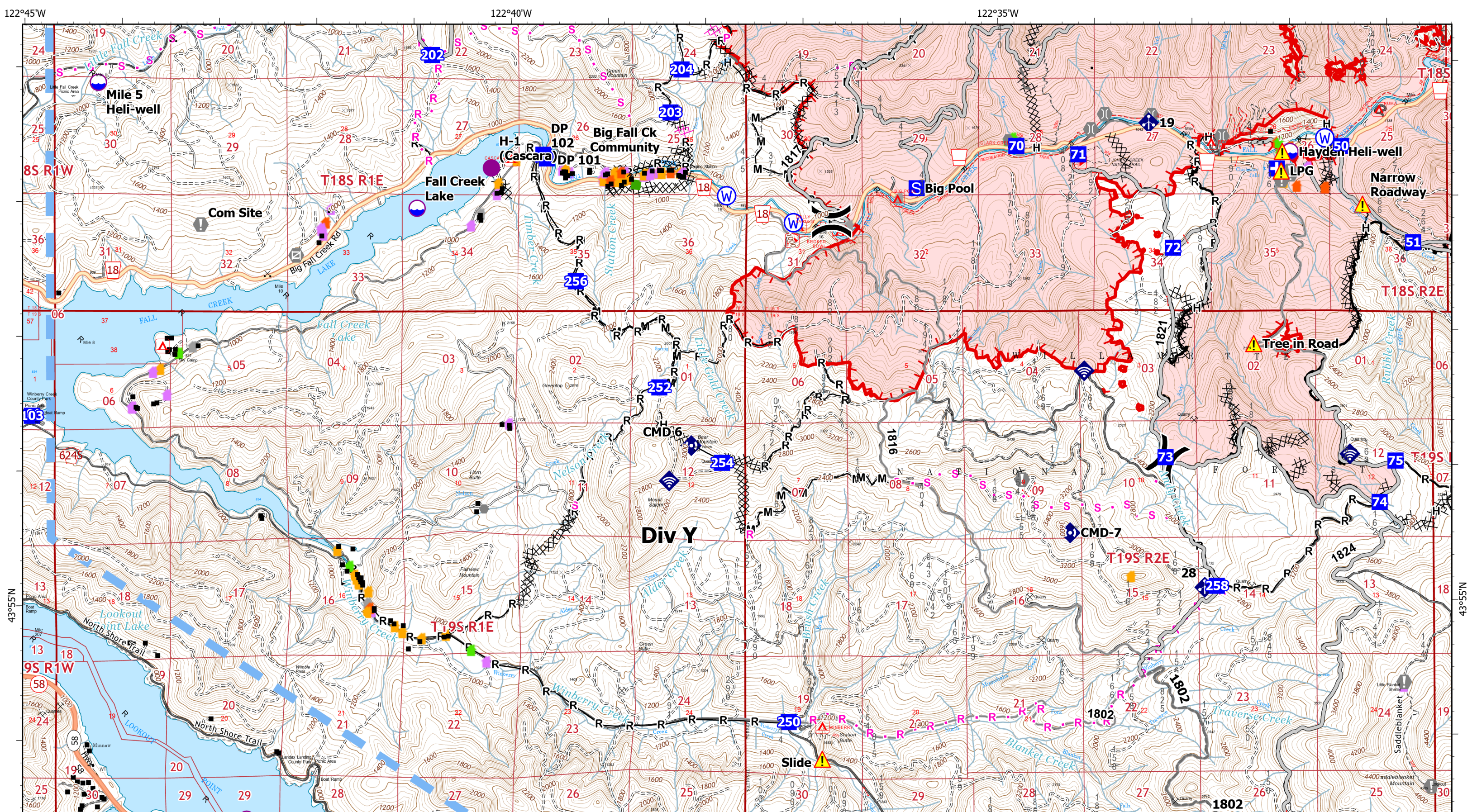
IAP
 Bedrock
 ORWIF-230266
 08/18/2023 All Shifts
 28,215 acres
 8/17/2023 @ 1700 PT

0 0.25 0.5 Miles

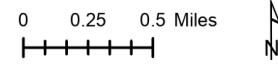
- | | | | | |
|----------------|----------------------|-----------------|-----------------------------------|-------------------------------|
| Dip Site | Lookout | Internet Access | Completed Dozer Line | Planned Road as Line |
| Helispot | Hot Spot - Spot Fire | Repeater | Completed Hand Line | Planned Secondary Line |
| Division Break | Value at Risk | Hazard | Completed Mixed Construction Line | Access or Improved Road |
| Medical | Other | Water Source | Completed Road as Line | Other |
| Drop Point | Bridge | Contained | Planned Dozer Line | Temporary Flight Restriction |
| Staging Area | Mobile Weather Unit | Uncontained | Planned Mixed Construction Line | Wildfire Daily Fire Perimeter |

IAP Map Index ID: Page 4

8/18/2023 1658
 Acres from IR & Sketch
 North American 1983 Datum, Lat/Long Grid

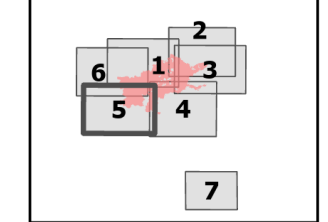


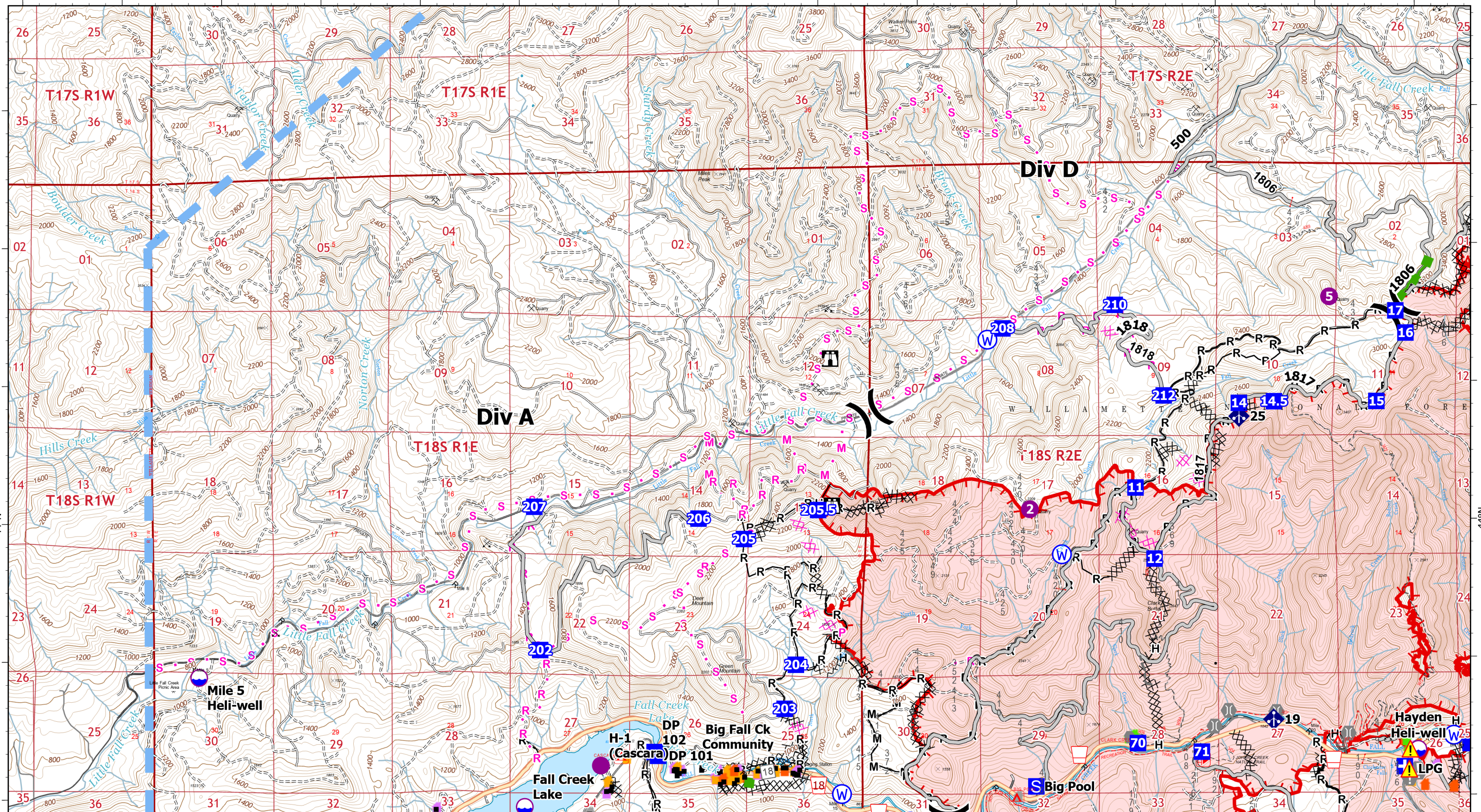
IAP
 Bedrock
 ORWIF-230266
 08/18/2023 All Shifts
 28,215 acres
 8/17/2023 @ 1700 PT



- | | | | | |
|----------------|---------------------|----------------------|-----------------------------------|-------------------------------|
| Dip Site | Value at Risk | Repeater | Completed Hand Line | Planned Secondary Line |
| Helispot | Other | Hazard | Completed Mixed Construction Line | Access or Improved Road |
| Division Break | Gate | Water Source | Completed Road as Line | Other |
| Medical | Bridge | Contained | Planned Dozer Line | Escape Route |
| Drop Point | Mobile Weather Unit | Uncontained | Planned Plow Line | Temporary Flight Restriction |
| Staging Area | Internet Access | Completed Dozer Line | Planned Road as Line | Wildfire Daily Fire Perimeter |

IAP Map Index ID: Page 5



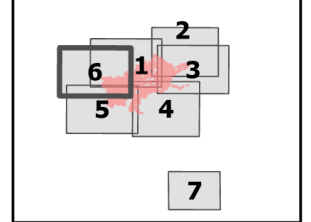


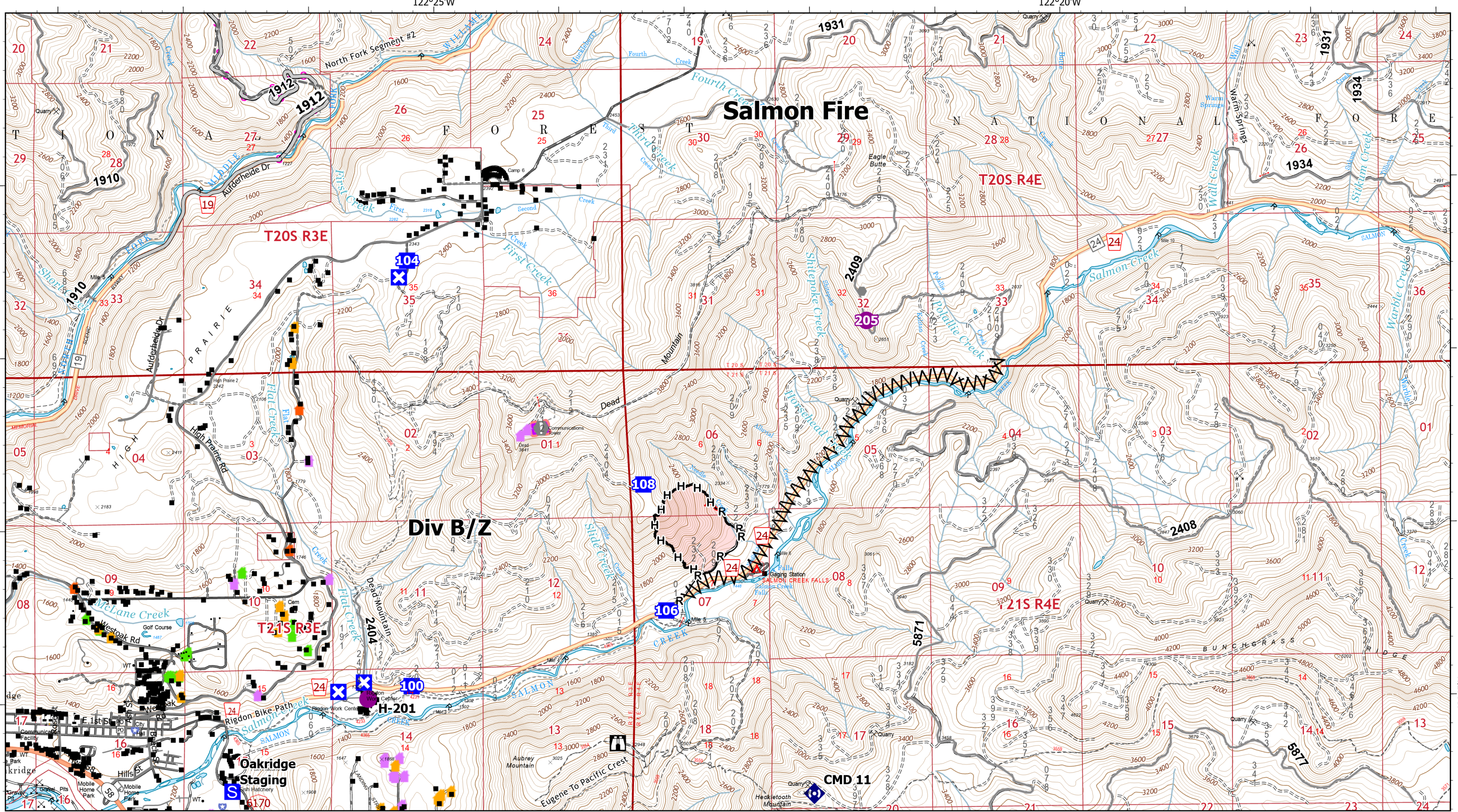
IAP
 Bedrock
 ORWIF-230266
 08/18/2023 All Shifts
 28,215 acres
 8/17/2023 @ 1700 PT

0 0.25 0.5 Miles

- | | | | | |
|----------------|---------------------|-----------------------------------|---------------------------------|-------------------------------|
| Dip Site | Lookout | Water Source | Completed Road as Line | Access or Improved Road |
| Helispot | Value at Risk | Contained | Planned Dozer Line | Other |
| Division Break | Other | Uncontained | Planned Mixed Construction Line | Escape Route |
| Medical | Bridge | Completed Dozer Line | Planned Plow Line | Temporary Flight Restriction |
| Drop Point | Mobile Weather Unit | Completed Hand Line | Planned Road as Line | Wildfire Daily Fire Perimeter |
| Staging Area | Hazard | Completed Mixed Construction Line | Planned Secondary Line | |

IAP Map Index ID: Page 6

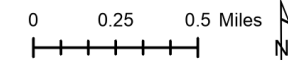




Salmon Fire

Div B/Z

IAP
 Bedrock
 ORWIF-230266
 08/18/2023 All Shifts
 28,215 acres
 8/17/2023 @ 1700 PT



- | | | | | |
|--------------|---------------|----------------------|-------------------------|-------------------------------|
| Helispot | Lookout | Contained | Completed Road as Line | Retardant Drop |
| Drop Point | Value at Risk | Uncontained | Planned Secondary Line | Wildfire Daily Fire Perimeter |
| Closure | Other | Completed Fuel Break | Access or Improved Road | |
| Staging Area | Repeater | Completed Hand Line | Other | |

IAP Map Index ID: Page 7

