

Medical Evac

Bedrock
ORWIF-230266

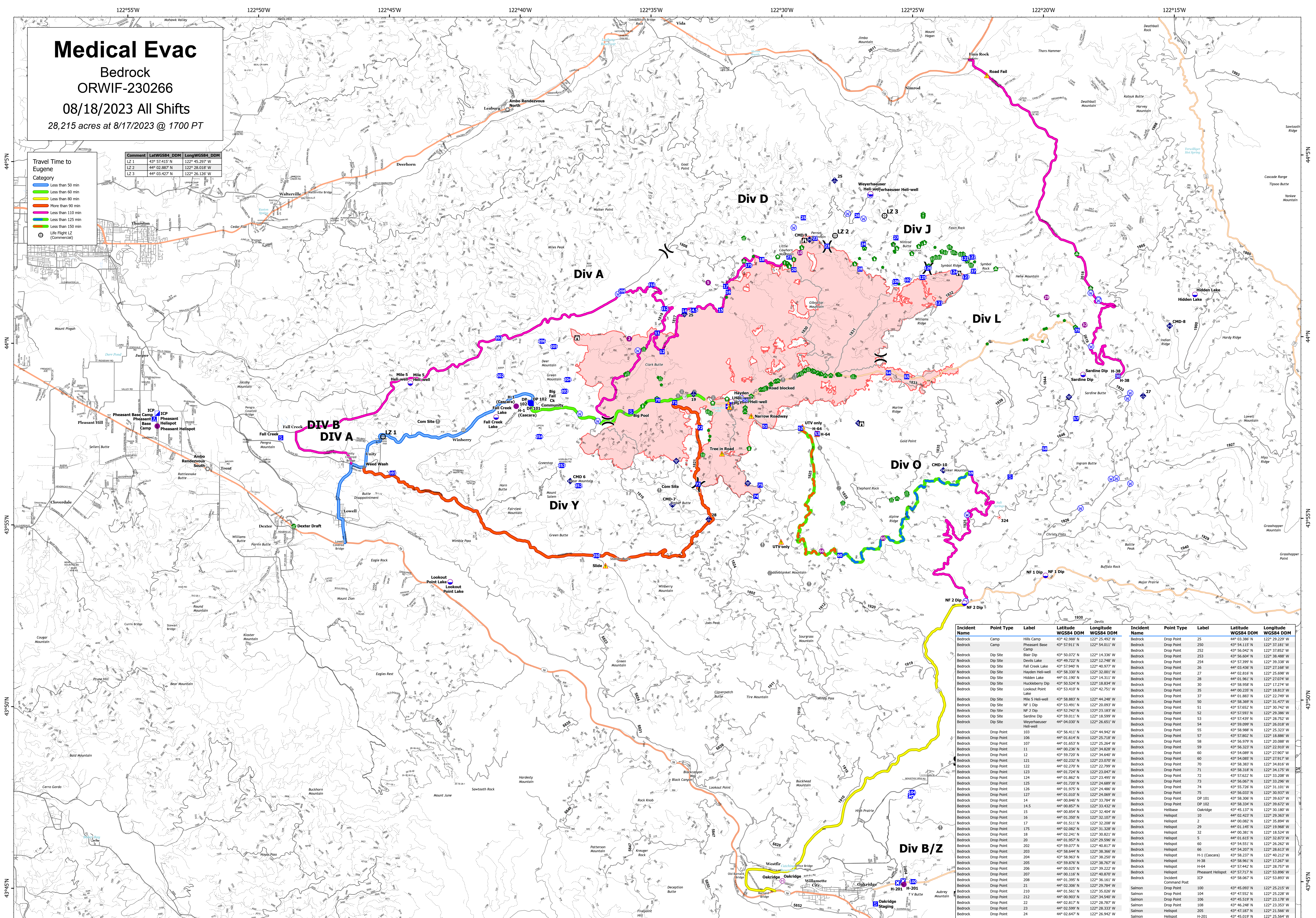
08/18/2023 All Shifts

28,215 acres at 8/17/2023 @ 1700 PT

Travel Time to Eugene
Category

- Less than 50 min
- Less than 60 min
- Less than 80 min
- More than 90 min
- Less than 110 min
- Less than 125 min
- Less than 150 min
- Life Flight LZ (Commercial)

Comment	LatWGS84_DDM	LongWGS84_DDM
LZ 1	43° 57.415' N	122° 45.297' W
LZ 2	44° 02.887' N	122° 28.018' W
LZ 3	44° 03.427' N	122° 26.126' W



Incident	Point Type	Label	Latitude WGS84 DDM	Longitude WGS84 DDM	Incident	Point Type	Label	Latitude WGS84 DDM	Longitude WGS84 DDM
Bedrock	Camp	Hills Camp	43° 42.988' N	122° 25.492' W	Bedrock	Drop Point	25	44° 03.386' N	122° 29.229' W
Bedrock	Camp	Pheasant Base	43° 57.911' N	122° 54.011' W	Bedrock	Drop Point	250	43° 54.115' N	122° 37.181' W
Bedrock	Dip Site	Camp	43° 50.072' N	122° 14.336' W	Bedrock	Drop Point	252	43° 56.042' N	122° 37.852' W
Bedrock	Dip Site	Devis Lake	43° 49.722' N	122° 12.748' W	Bedrock	Drop Point	253	43° 56.566' N	122° 38.468' W
Bedrock	Dip Site	Fall Creek Lake	43° 57.940' N	122° 40.977' W	Bedrock	Drop Point	254	43° 57.399' N	122° 39.338' W
Bedrock	Dip Site	Hayden Hill-well	43° 58.330' N	122° 32.001' W	Bedrock	Drop Point	26	44° 03.436' N	122° 27.168' W
Bedrock	Dip Site	Hidden Lake	44° 01.190' N	122° 14.211' W	Bedrock	Drop Point	27	44° 02.616' N	122° 25.698' W
Bedrock	Dip Site	Huskberry Dip	43° 50.524' N	122° 18.834' W	Bedrock	Drop Point	28	44° 01.961' N	122° 27.074' W
Bedrock	Dip Site	Lookout Point	43° 53.410' N	122° 42.751' W	Bedrock	Drop Point	30	43° 58.958' N	122° 17.274' W
Bedrock	Dip Site	Mile 5 Hill-well	43° 58.883' N	122° 44.248' W	Bedrock	Drop Point	35	44° 00.235' N	122° 18.813' W
Bedrock	Dip Site	NF 1 Dip	43° 53.491' N	122° 20.093' W	Bedrock	Drop Point	37	44° 01.883' N	122° 22.749' W
Bedrock	Dip Site	NF 2 Dip	43° 52.742' N	122° 23.183' W	Bedrock	Drop Point	50	43° 58.369' N	122° 31.477' W
Bedrock	Dip Site	Sardine Dip	43° 59.011' N	122° 18.599' W	Bedrock	Drop Point	51	43° 57.552' N	122° 30.742' W
Bedrock	Dip Site	Weyerhaeuser Hill-well	44° 04.030' N	122° 26.551' W	Bedrock	Drop Point	52	43° 57.593' N	122° 29.386' W
Bedrock	Drop Point	103	43° 56.411' N	122° 44.942' W	Bedrock	Drop Point	53	43° 57.439' N	122° 28.752' W
Bedrock	Drop Point	106	44° 01.614' N	122° 25.718' W	Bedrock	Drop Point	54	43° 59.099' N	122° 26.018' W
Bedrock	Drop Point	107	44° 01.653' N	122° 25.264' W	Bedrock	Drop Point	55	43° 58.988' N	122° 25.323' W
Bedrock	Drop Point	11	44° 00.236' N	122° 34.828' W	Bedrock	Drop Point	57	43° 57.802' N	122° 18.888' W
Bedrock	Drop Point	12	43° 59.720' N	122° 34.640' W	Bedrock	Drop Point	58	43° 56.979' N	122° 20.088' W
Bedrock	Drop Point	121	44° 02.232' N	122° 23.070' W	Bedrock	Drop Point	59	43° 56.323' N	122° 22.910' W
Bedrock	Drop Point	122	44° 02.270' N	122° 22.799' W	Bedrock	Drop Point	60	43° 54.089' N	122° 27.907' W
Bedrock	Drop Point	123	44° 01.724' N	122° 23.047' W	Bedrock	Drop Point	60	43° 54.085' N	122° 27.917' W
Bedrock	Drop Point	124	44° 01.862' N	122° 23.495' W	Bedrock	Drop Point	70	43° 58.383' N	122° 34.816' W
Bedrock	Drop Point	125	44° 01.720' N	122° 24.689' W	Bedrock	Drop Point	71	43° 58.318' N	122° 34.175' W
Bedrock	Drop Point	126	44° 01.975' N	122° 24.486' W	Bedrock	Drop Point	72	43° 57.622' N	122° 33.208' W
Bedrock	Drop Point	127	44° 01.010' N	122° 24.869' W	Bedrock	Drop Point	73	43° 56.907' N	122° 33.996' W
Bedrock	Drop Point	14	44° 00.846' N	122° 33.784' W	Bedrock	Drop Point	74	43° 55.726' N	122° 31.101' W
Bedrock	Drop Point	14.5	44° 00.857' N	122° 33.432' W	Bedrock	Drop Point	75	43° 56.033' N	122° 30.937' W
Bedrock	Drop Point	15	44° 00.854' N	122° 32.404' W	Bedrock	Drop Point	DP 101	43° 58.306' N	122° 39.637' W
Bedrock	Drop Point	16	44° 01.350' N	122° 32.107' W	Bedrock	Drop Point	60	43° 58.334' N	122° 39.672' W
Bedrock	Drop Point	17	44° 01.511' N	122° 32.208' W	Bedrock	Helibase	Oakridge	43° 48.137' N	122° 30.187' W
Bedrock	Drop Point	175	44° 02.082' N	122° 31.328' W	Bedrock	Helibase	10	44° 02.423' N	122° 29.363' W
Bedrock	Drop Point	18	44° 02.241' N	122° 30.821' W	Bedrock	Helibase	2	44° 00.082' N	122° 35.894' W
Bedrock	Drop Point	20	44° 01.957' N	122° 29.596' W	Bedrock	Helibase	29	44° 01.145' N	122° 19.968' W
Bedrock	Drop Point	202	43° 59.077' N	122° 40.817' W	Bedrock	Helibase	32	44° 00.381' N	122° 18.244' W
Bedrock	Drop Point	203	43° 58.644' N	122° 38.366' W	Bedrock	Helibase	5	44° 01.615' N	122° 32.873' W
Bedrock	Drop Point	204	43° 58.963' N	122° 38.250' W	Bedrock	Helibase	60	43° 54.551' N	122° 26.262' W
Bedrock	Drop Point	205	43° 59.876' N	122° 38.767' W	Bedrock	Helibase	66	43° 54.207' N	122° 28.613' W
Bedrock	Drop Point	206	44° 00.025' N	122° 39.222' W	Bedrock	Helibase	H-1 (Cascara)	43° 58.237' N	122° 40.212' W
Bedrock	Drop Point	207	44° 00.116' N	122° 40.870' W	Bedrock	Helibase	H-38	43° 58.961' N	122° 17.267' W
Bedrock	Drop Point	208	44° 01.395' N	122° 36.161' W	Bedrock	Helibase	H-64	43° 57.442' N	122° 28.757' W
Bedrock	Drop Point	21	44° 02.306' N	122° 29.784' W	Bedrock	Helibase	Pheasant Helibase	43° 57.717' N	122° 53.896' W
Bedrock	Drop Point	210	44° 01.551' N	122° 35.026' W	Bedrock	Incident Command Post	ICP	43° 58.067' N	122° 53.893' W
Bedrock	Drop Point	212	44° 00.903' N	122° 34.540' W	Salmon	Drop Point	100	43° 45.093' N	122° 25.215' W
Bedrock	Drop Point	22	44° 02.817' N	122° 28.787' W	Salmon	Drop Point	104	43° 47.552' N	122° 25.228' W
Bedrock	Drop Point	23	44° 02.599' N	122° 28.333' W	Salmon	Drop Point	106	43° 45.519' N	122° 23.378' W
Bedrock	Drop Point	24	44° 02.647' N	122° 28.942' W	Salmon	Drop Point	108	43° 46.248' N	122° 23.553' W
Bedrock	Drop Point				Salmon	Drop Point	205	43° 47.187' N	122° 21.566' W
Bedrock	Drop Point				Helibase	H-201	43° 45.019' N	122° 25.564' W	

North

0 0.5 1 2 3 4 Miles

State Hwy	Collector Rd	Local	Minor Arterial	Other Freeways and Expressways	Other Principal Arterial	Arterial Rd	Other Roads	Major Collector	Other Freeways and Expressways	Other Principal Arterial	Paved	Dip Site	Incident Command Post	Camp
State Hwy	FS Local Rd	Local	Minor Collector	Other Freeways and Expressways	Other Principal Arterial	Collector Rd	Other Roads	Minor Arterial	Other Freeways and Expressways	Mainline Rd	All weather	Helibase	Drop Point	
Arterial Rd	Other Roads	Major Collector			State Hwy	FS Local Rd	Local	Minor Collector			Dirt			

8/17/2023 2227
Acres from IR & Grid
North American 1983 Datum. Lat/Long Grid