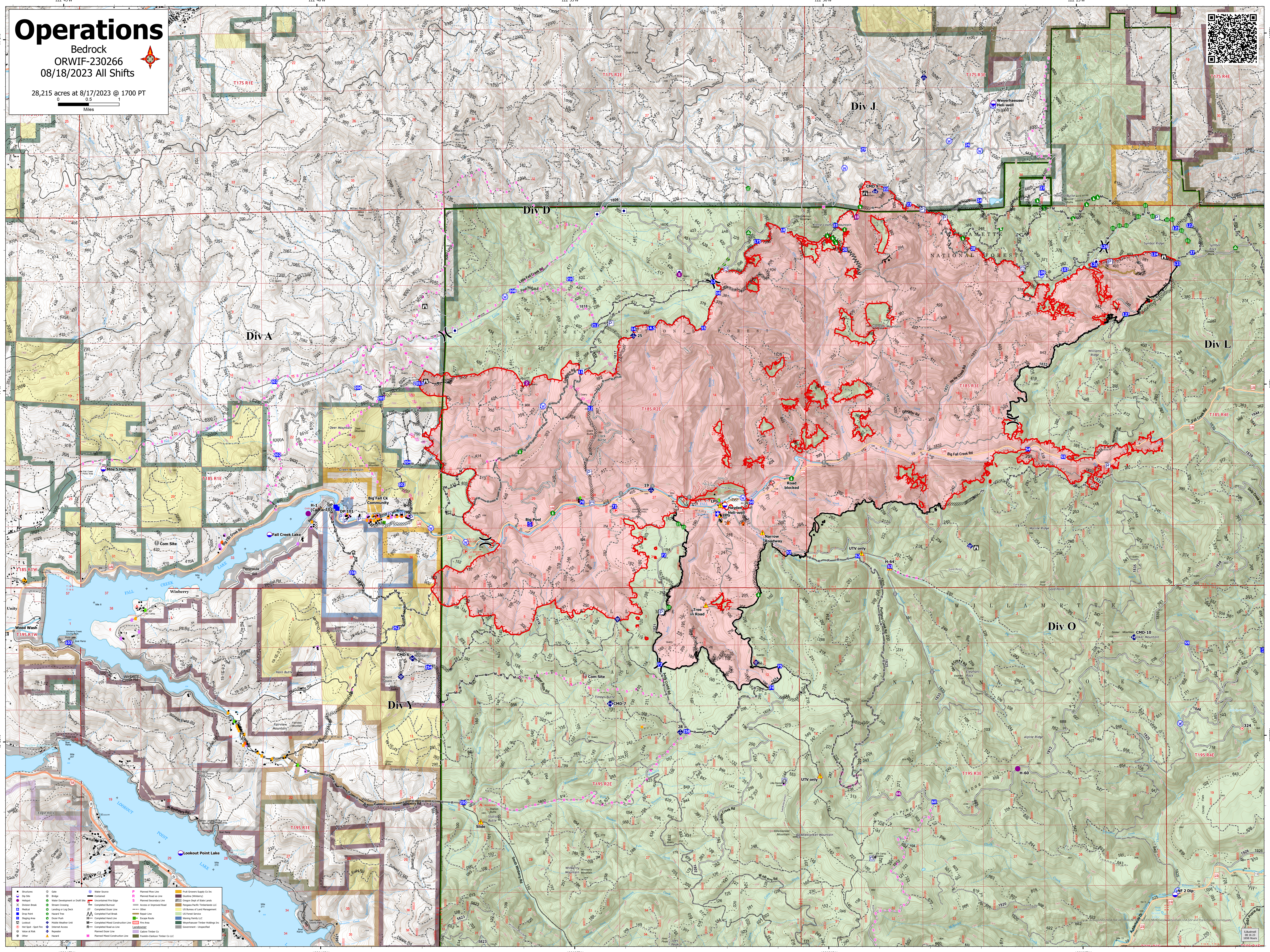
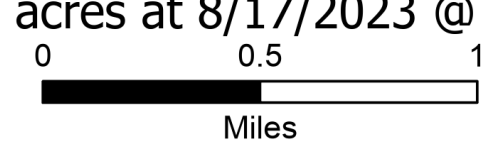


# Operations

Bedrock  
ORWIF-230266  
08/18/2023 All Shifts



28,215 acres at 8/17/2023 @ 1700 PT



● Structures	○ Gate	○ Water Source	○ Planned River Line	○ Frost Covers Supply Co. Inc.
○ Well	○ Bridge	○ Contaminated Fill Edge	○ Planned Road as Line	○ Oregon (Wilderness)
○ Pipeline Break	○ Water Development or Drift Site	○ Unexcavated Fire Edge	○ Planned Secondary Line	○ Oregon Dept of State Lands
○ Pipeline Break	○ Stream Crossing	○ Completed Burned	○ Access or Improved Road	○ Pangaea Party, TerraNova LLC
○ Pipeline Break	○ Pipeline Break	○ Completed Burn Line	○ US Forest Service	○ US Forest Service
○ Pipeline Break	○ Pipeline Break	○ Completed Road as Line	○ Oregon Dept of State Lands	○ Oregon Dept of State Lands
○ Pipeline Break	○ Pipeline Break	○ Completed Road Construction Line	○ Fire Area	○ Government - Unspecified
○ Pipeline Break	○ Pipeline Break	○ Planned Road as Line	○ Pipeline Break	○ Pipeline Break
○ Pipeline Break	○ Pipeline Break	○ Pipeline Break	○ Pipeline Break	○ Pipeline Break
○ Pipeline Break	○ Pipeline Break	○ Pipeline Break	○ Pipeline Break	○ Pipeline Break