

Pilot Map

Bedrock
ORWIF-230266
08/18/2023 All Shifts

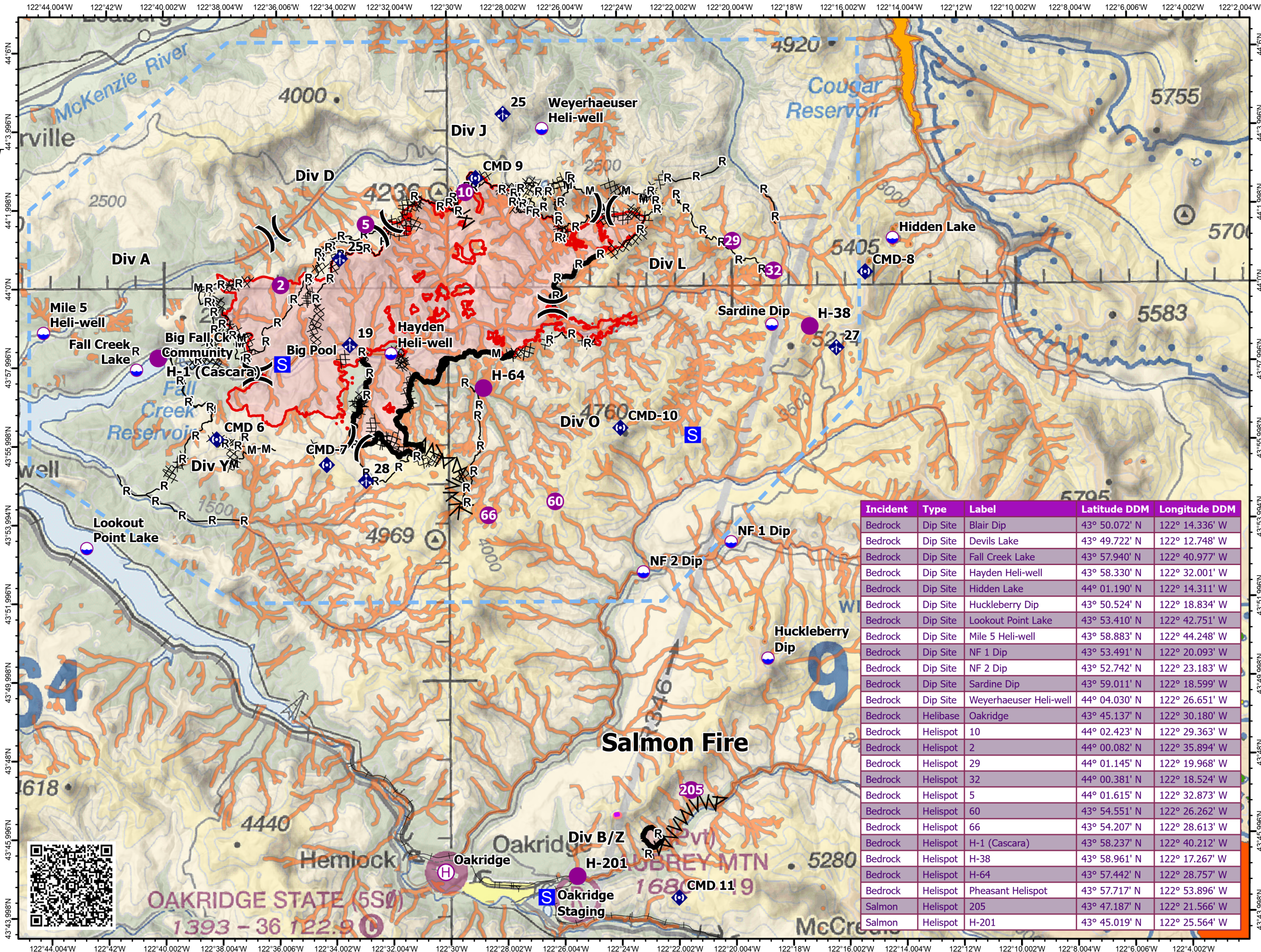
28,215 acres at 8/17/2023 @ 1700 PT

- Retardant Avoidance Area
- Okay to dip?
- NO
- READ approval required
- YES
- Dip Site
- Helispot
- H Helibase
- Division Break
- S Staging Area
- M Mobile Weather Unit
- R Repeater
- Completed Dozer Line
- Completed Fuel Break
- Completed Mixed Construction Line
- Completed Road as Line
- Retardant Drop
- Temporary Flight Restriction
- Fire Area

0 0.5 1 2 3
US Nautical Miles



8/18/2023 0715
Acres from IR & Sketch
North American 1983 Datum.
LatLong Grid



Incident	Type	Label	Latitude DDM	Longitude DDM
Bedrock	Dip Site	Blair Dip	43° 50.072' N	122° 14.336' W
Bedrock	Dip Site	Devils Lake	43° 49.722' N	122° 12.748' W
Bedrock	Dip Site	Fall Creek Lake	43° 57.940' N	122° 40.977' W
Bedrock	Dip Site	Hayden Heli-well	43° 58.330' N	122° 32.001' W
Bedrock	Dip Site	Hidden Lake	44° 01.190' N	122° 14.311' W
Bedrock	Dip Site	Huckleberry Dip	43° 50.524' N	122° 18.834' W
Bedrock	Dip Site	Lookout Point Lake	43° 53.410' N	122° 42.751' W
Bedrock	Dip Site	Mile 5 Heli-well	43° 58.883' N	122° 44.248' W
Bedrock	Dip Site	NF 1 Dip	43° 53.491' N	122° 20.093' W
Bedrock	Dip Site	NF 2 Dip	43° 52.742' N	122° 23.183' W
Bedrock	Dip Site	Sardine Dip	43° 59.011' N	122° 18.599' W
Bedrock	Dip Site	Weyerhaeuser Heli-well	44° 04.030' N	122° 26.651' W
Bedrock	Helibase	Oakridge	43° 45.137' N	122° 30.180' W
Bedrock	Helispot	10	44° 02.423' N	122° 29.363' W
Bedrock	Helispot	2	44° 00.082' N	122° 35.894' W
Bedrock	Helispot	29	44° 01.145' N	122° 19.968' W
Bedrock	Helispot	32	44° 00.381' N	122° 18.524' W
Bedrock	Helispot	5	44° 01.615' N	122° 32.873' W
Bedrock	Helispot	60	43° 54.551' N	122° 26.262' W
Bedrock	Helispot	66	43° 54.207' N	122° 28.613' W
Bedrock	Helispot	H-1 (Casara)	43° 58.237' N	122° 40.212' W
Bedrock	Helispot	H-38	43° 58.961' N	122° 17.267' W
Bedrock	Helispot	H-64	43° 57.442' N	122° 28.757' W
Bedrock	Helispot	Pheasant Helispot	43° 57.717' N	122° 53.896' W
Salmon	Helispot	205	43° 47.187' N	122° 21.566' W
Salmon	Helispot	H-201	43° 45.019' N	122° 25.564' W