

**Suppression Repair  
North Repair 1  
Bedrock**  
ORWIF-230266  
09/19/2023

31,590 acres at 9/15/2023 @ 19450 0.25 0.5 Miles



- In Use - Fire Management
- Needs Assessment
- Repair Needed
- Completed - Inspected
- Other - See Comments
- In Use - Fire Management
- Needs Assessment

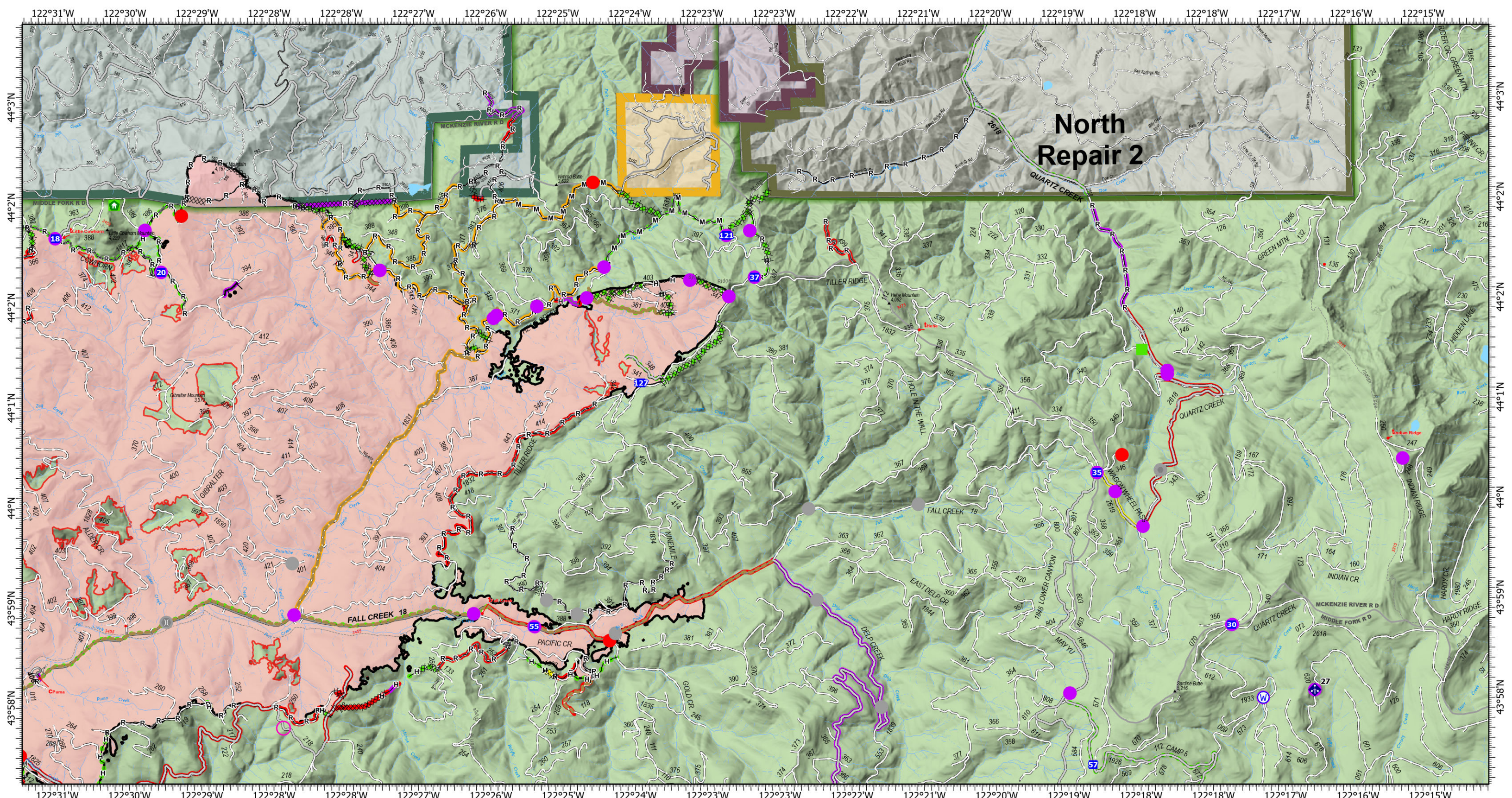
- Repair Needed
- In Progress
- Completed - Inspected
- No Repair Needed
- Helispot
- Drop Point
- Other
- ⊕ Bridge

- 🏠 Structure Wrap
- 🏠 Landing or Log Deck
- ⬇ Mobile Weather Unit
- Contained
- Uncontained Fire Edge
- Completed Burnout
- XXXX Completed Dozer Line
- 〰 Completed Fuel Break

- Completed Hand Line
- Completed Mixed Construction Line
- Completed Road as Line
- XX Planned Dozer Line
- Access or Improved Road
- Other
- Repair Line
- Road Repair

- Retardant Drop
- Wildfire Daily Fire Perimeter
- Fruit Growers Supply Co Inc
- Giustina (Winberry)
- Waning Family LLC
- Weyerhaeuser Timber Holdings Inc





**Suppression Repair**  
**North Repair 2**  
**Bedrock**  
 ORWIF-230266  
 09/19/2023

N  
 W E  
 S  
 9/18/2023 2119  
 Acres from IR & GPS  
 North American 1983 Datum.  
 LatLong Grid

31,590 acres at 9/15/2023 @ 19450 0.25 0.5 Miles

- In Use - Fire Management
- Needs Assessment
- Repair Needed
- Completed - Inspected
- Other - See Comments
- Needs Assessment

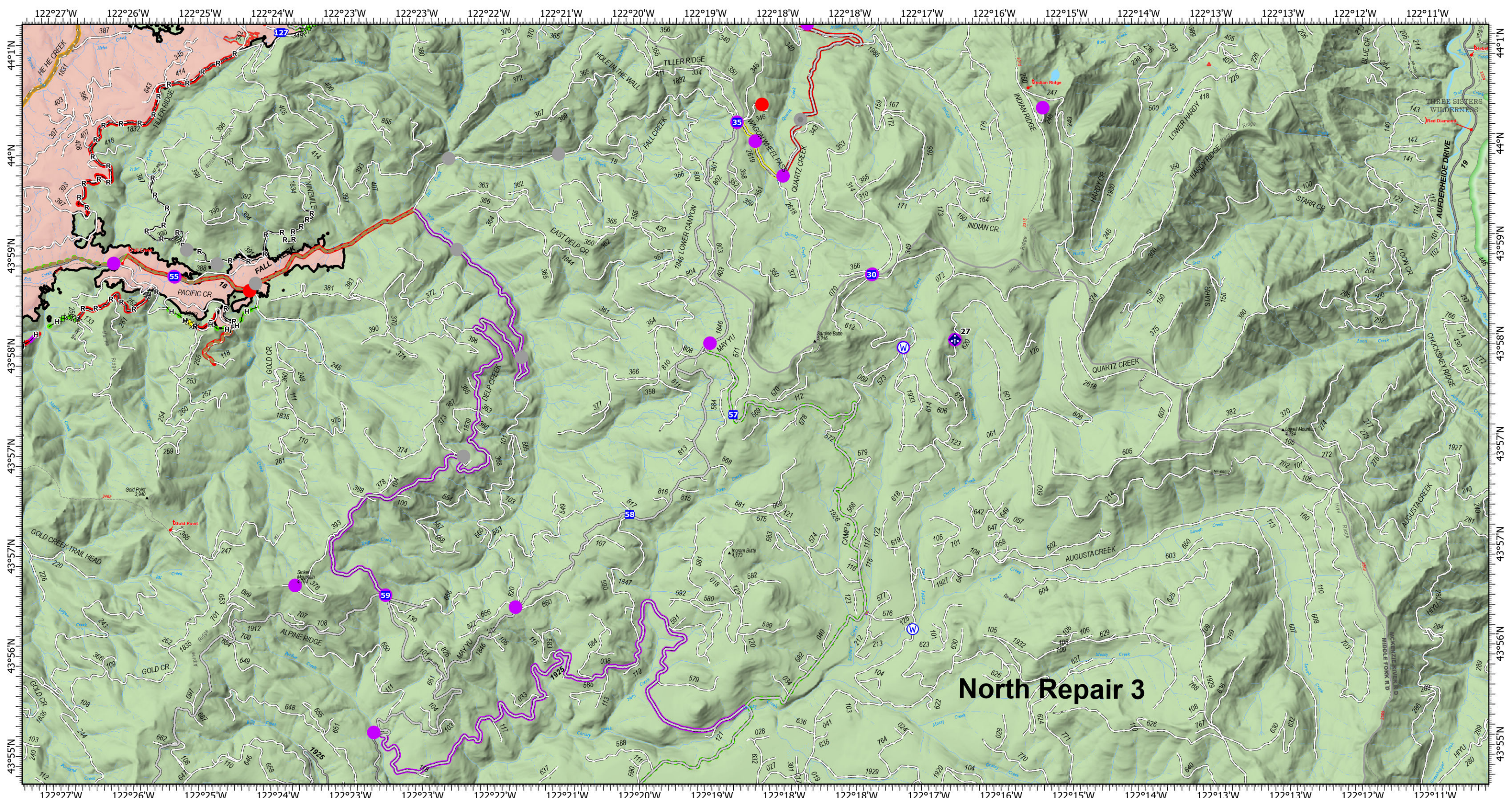
- Repair Needed
- In Progress
- Completed - Ready for Inspection
- Completed - Inspected
- No Repair Needed
- Drop Point
- Other

- Bridge
- Structure Wrap
- Mobile Weather Unit
- Water Source
- Contained
- Completed Burnout
- Completed Dozer Line

- Completed Hand Line
- Completed Mixed Construction Line
- Completed Road as Line
- Access or Improved Road
- - - Other
- Repair Line
- Road Repair

- Wildfire Daily Fire Perimeter
- Franklin-Clarkson Timber Co LLC
- Fruit Growers Supply Co Inc
- Giustina (Winberry)
- Weyerhaeuser Timber Holdings Inc





# North Repair 3

**Suppression Repair**  
**North Repair 3**  
**Bedrock**  
 ORWIF-230266  
 09/19/2023

9/18/2023 2120  
 Acres from IR & GPS  
 North American 1983 Datum.  
 Lat/Long Grid

31,590 acres at 9/15/2023 @ 19450  
 0.25 0.5  
 Miles



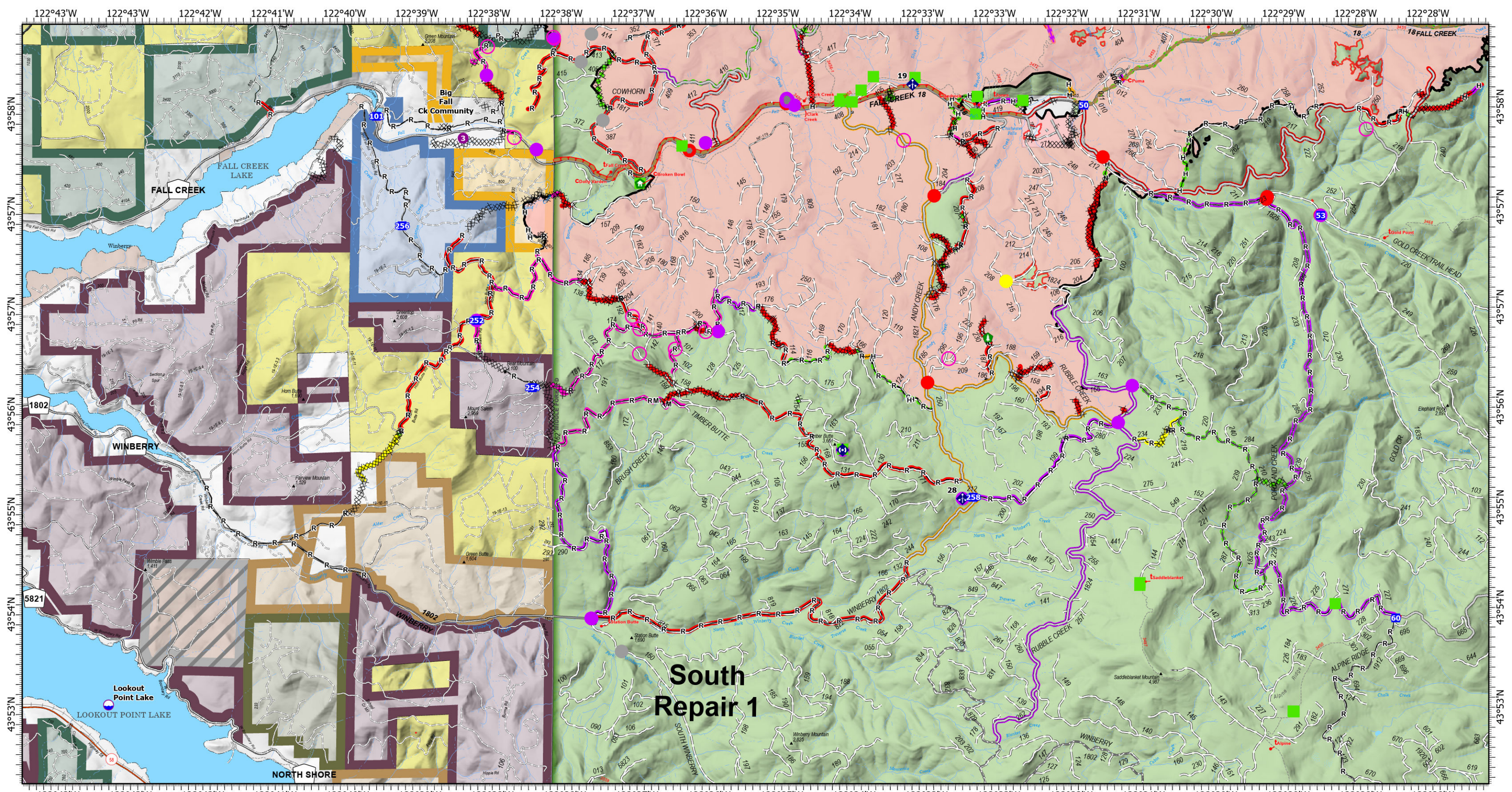
- Needs Assessment
- Repair Needed
- Other - See Comments
- Needs Assessment
- Repair Needed
- In Progress

- Completed - Ready for Inspection
- Completed - Inspected
- No Repair Needed
- Drop Point
- Other
- ⬇ Mobile Weather Unit

- ⊙ Water Source
- Contained
- Completed Dozer Line
- Completed Hand Line
- Completed Road as Line
- Access or Improved Road

- Repair Line
- Road Repair
- Wildfire Daily Fire Perimeter





**Suppression Repair**  
**South Repair 1**  
**Bedrock**  
 ORWIF-230266  
 09/19/2023

31,590 acres at 9/15/2023 @ 19450

N  
 W E  
 S  
 9/18/2023 2118  
 Acres from IR & GPS  
 North American 1983 Datum.  
 Lat/Long Grid



- In Use - Fire Management
- Needs Assessment
- Repair Needed
- Completed - Ready for Inspection
- Completed - Inspected
- Other - See Comments
- In Use - Fire Management
- Needs Assessment

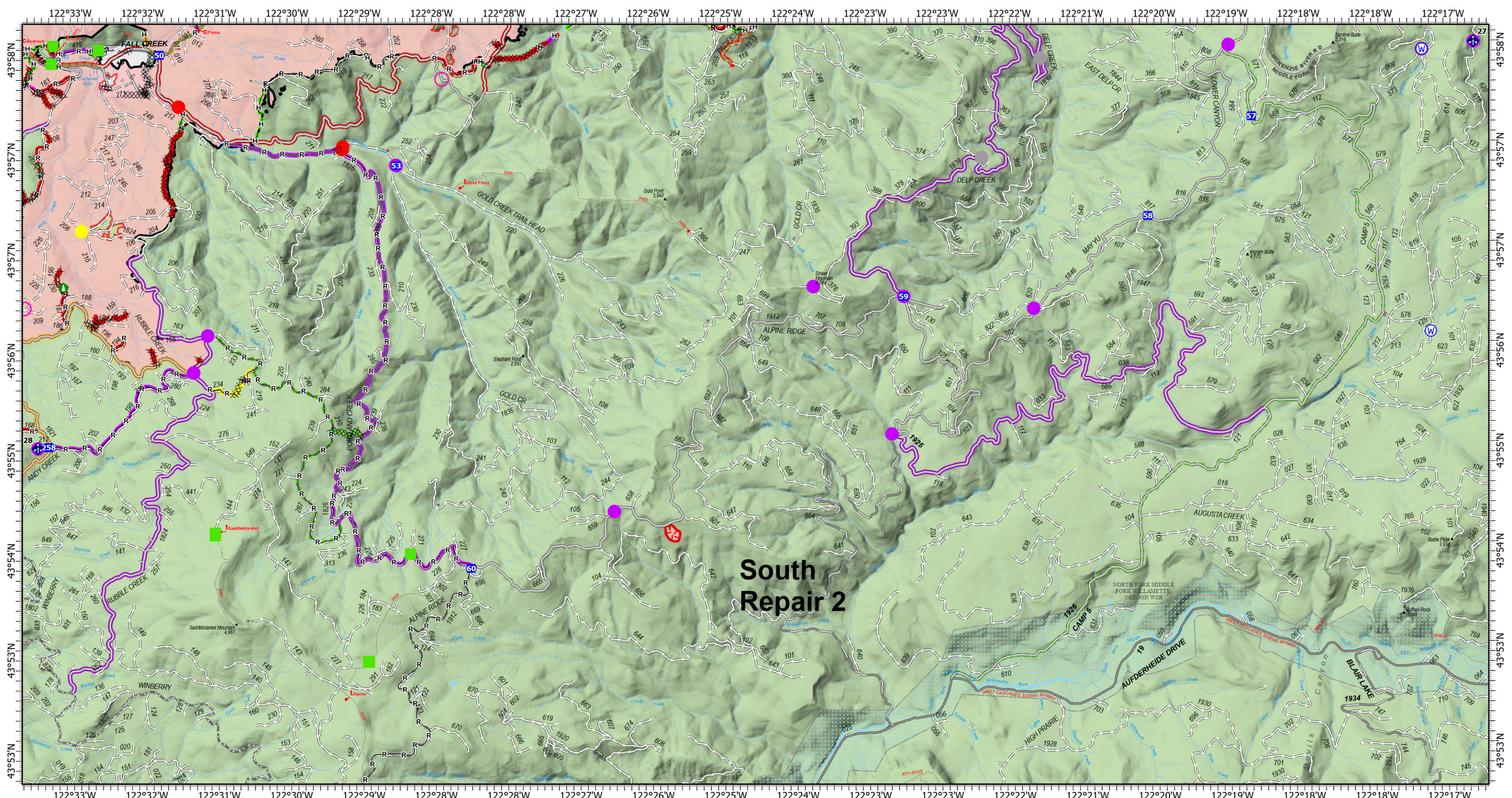
- Repair Needed
- In Progress
- Completed - Ready for Inspection
- Completed - Inspected
- Dip Site
- Helispot
- Drop Point
- Other

- ⊕ Bridge
- ⊕ Structure Wrap
- ⊕ Hazard Tree
- ⊕ Mobile Weather Unit
- ⊕ Repeater
- Contained
- XXXX Completed Dozer Line
- H— Completed Hand Line
- M— Completed Mixed Construction Line

- R— Completed Road as Line
- XX Planned Dozer Line
- Access or Improved Road
- Other
- Repair Line
- Road Repair
- Retardant Drop
- Wildfire Daily Fire Perimeter
- Cadore Timber Co

- Franklin-Clarkson Timber Co LLC
- Fruit Growers Supply Co Inc
- Giustina (Winberry)
- Oregon Dept of State Lands
- Pangaea Pacific Timberlands LLC
- Waning Family LLC
- Weyerhaeuser Timber Holdings Inc





**Suppression Repair**  
**South Repair 2**  
**Bedrock**  
 ORWIF-230266  
 09/19/2023

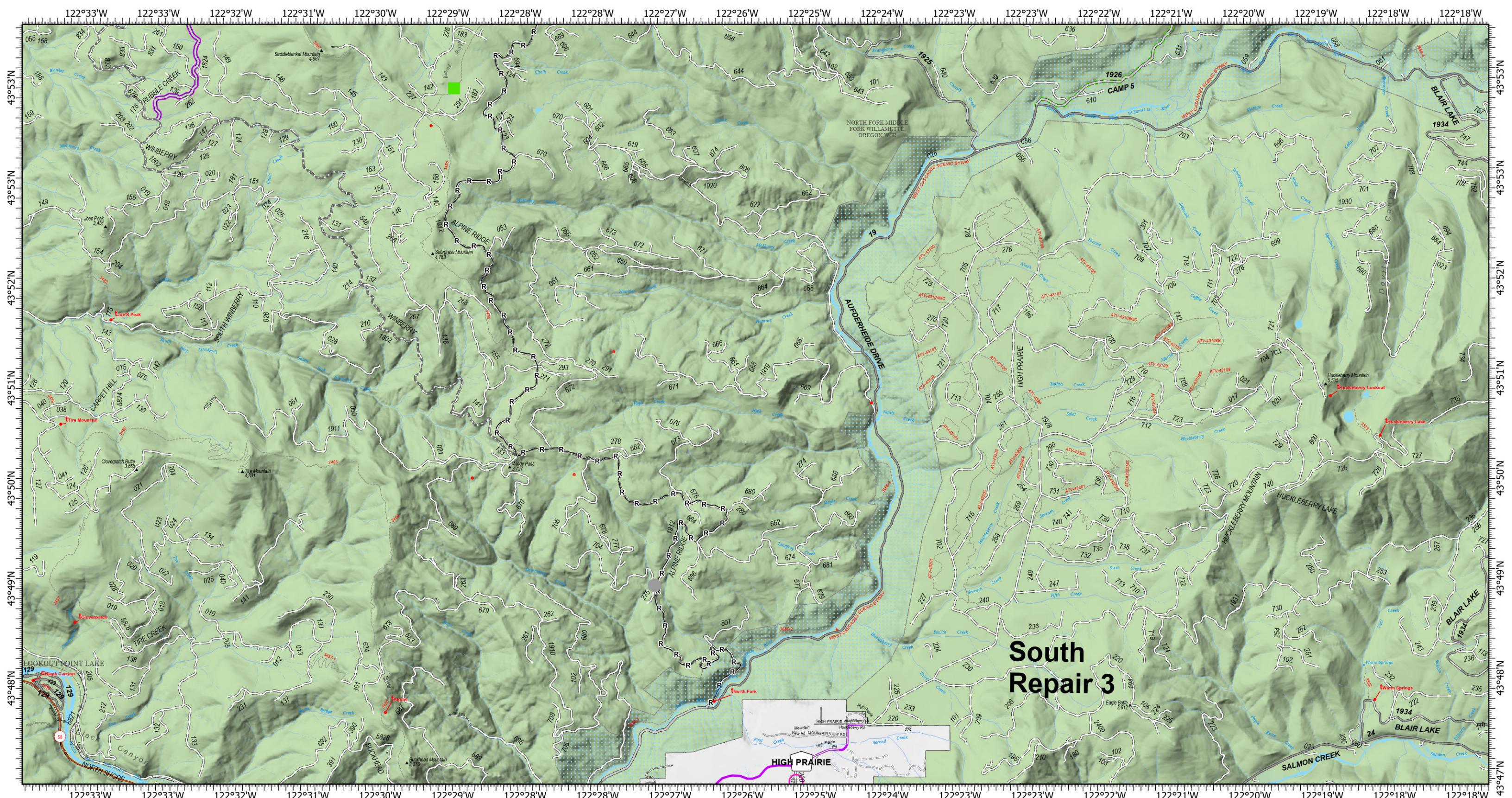
9/18/2023 2119  
 Acres from IR & GPS  
 North American 1983 Datum.  
 Lat/Long Grid

31,590 acres at 9/15/2023 @ 19450  
 0.25 0.5 Miles



- |                                  |                                  |                       |                               |
|----------------------------------|----------------------------------|-----------------------|-------------------------------|
| In Use - Fire Management         | Needs Assessment                 | Hazard Tree           | Completed Road as Line        |
| Needs Assessment                 | Repair Needed                    | Mobile Weather Unit   | Access or Improved Road       |
| Repair Needed                    | In Progress                      | Water Source          | Other                         |
| Completed - Ready for Inspection | Completed - Ready for Inspection | Contained             | Repair Line                   |
| Completed - Inspected            | Completed - Inspected            | Uncontained Fire Edge | Road Repair                   |
| Other - See Comments             | No Repair Needed                 | Completed Dozer Line  | Wildfire Daily Fire Perimeter |
| In Use - Fire Management         | Drop Point                       | Completed Hand Line   |                               |





**Suppression Repair  
South Repair 3  
Bedrock  
ORWIF-230266  
09/19/2023**

9/18/2023 2120  
Acres from IR & GPS  
North American 1983 Datum.  
Lat/Long Grid

31,590 acres at 9/15/2023 @ 19450 0.25 0.5 Miles

- In Use - Fire Management
- Completed - Inspected
- Other - See Comments
- Needs Assessment
- Completed - Inspected
- No Repair Needed
- R—R Completed Road as Line
- Access or Improved Road
- Other
- Wildfire Daily Fire Perimeter

