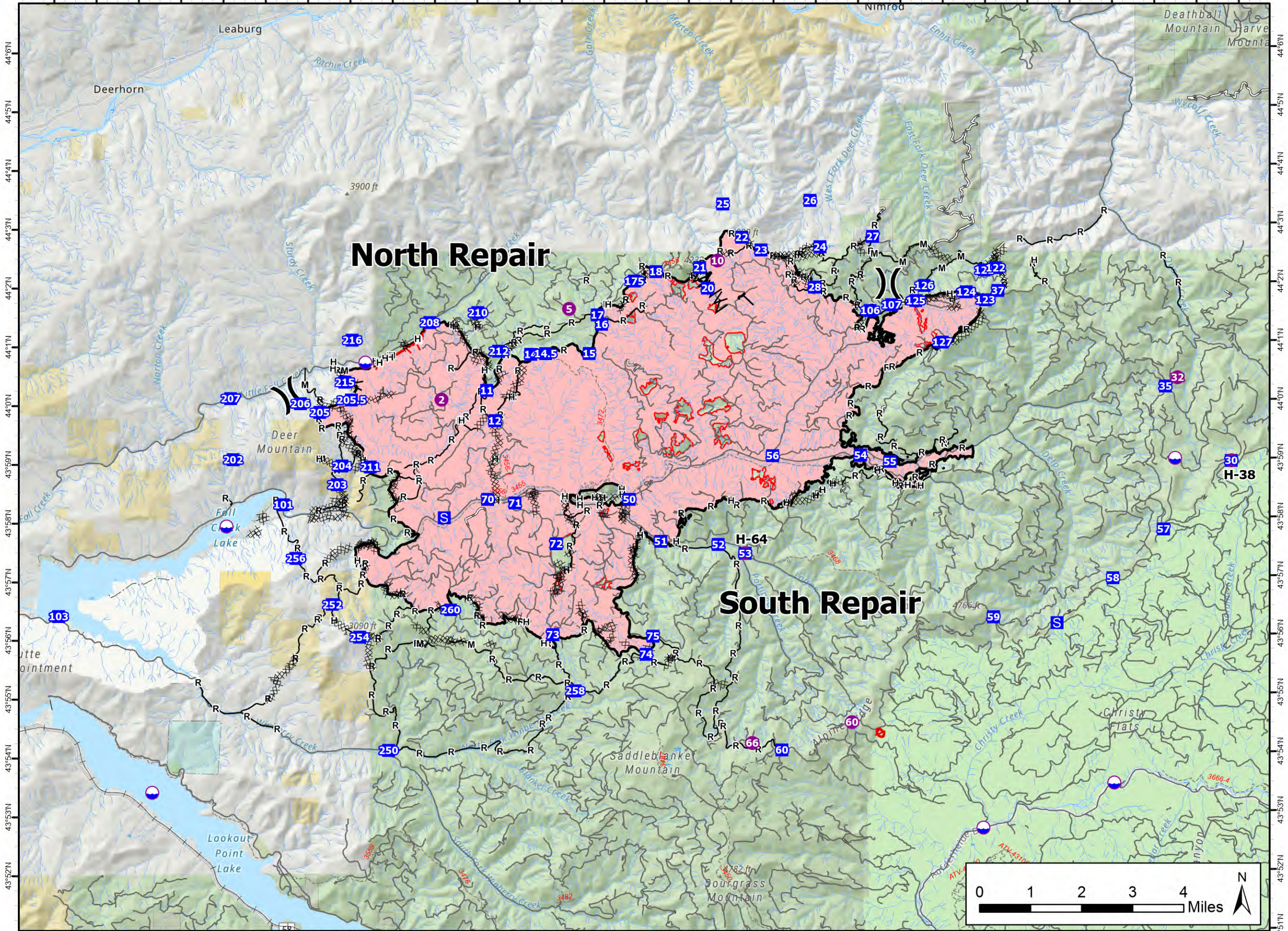


122°45'W 122°44'W 122°43'W 122°42'W 122°41'W 122°40'W 122°39'W 122°38'W 122°37'W 122°36'W 122°35'W 122°34'W 122°33'W 122°32'W 122°31'W 122°30'W 122°29'W 122°28'W 122°27'W 122°26'W 122°25'W 122°24'W 122°23'W 122°22'W 122°21'W 122°20'W 122°19'W 122°18'W 122°17'W



**North Repair**

**South Repair**

**Final Perimeter  
Bedrock**  
OR-WIF-230266  
September 14, 2023  
31,590 Acres

- Dip Site
- Helispot
- Division Break
- Drop Point
- Staging Area
- Completed Burnout
- Completed Dozer Line
- Completed Fuel Break
- Completed Hand Line
- Completed Mixed Line
- Completed Road as Line
- Contained
- Uncontained Fire Edge
- Fire Area
- Non Forest
- Forest Service Land
- Other Management Boundary
- State Lands
- Bureau of Land Management



122°45'W 122°44'W 122°43'W 122°42'W 122°41'W 122°40'W 122°39'W 122°38'W 122°37'W 122°36'W 122°35'W 122°34'W 122°33'W 122°32'W 122°31'W 122°30'W 122°29'W 122°28'W 122°27'W 122°26'W 122°25'W 122°24'W 122°23'W 122°22'W 122°21'W 122°20'W 122°19'W 122°18'W 122°17'W