

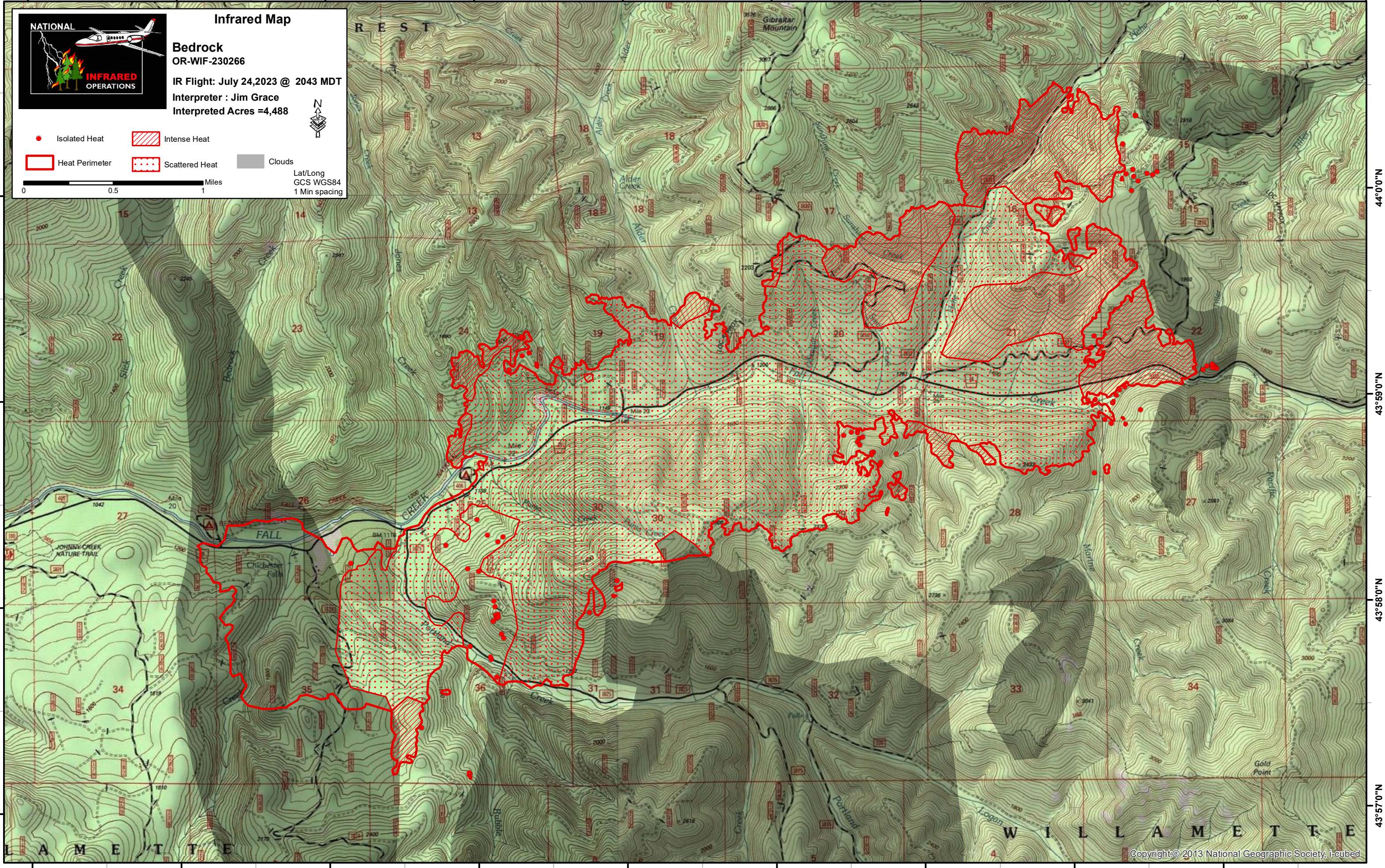
122°34'0"W 122°33'0"W 122°32'0"W 122°31'0"W 122°30'0"W 122°29'0"W 122°28'0"W 122°27'0"W 122°26'0"W 122°25'0"W



Infrared Map
Bedrock
OR-WIF-230266
IR Flight: July 24, 2023 @ 2043 MDT
Interpreter : Jim Grace
Interpreted Acres =4,488

● Isolated Heat Intense Heat
 Heat Perimeter Scattered Heat Clouds

0 0.5 1 Miles
 Lat/Long
 GCS WGS84
 1 Min spacing



122°34'0"W 122°33'0"W 122°32'0"W 122°31'0"W 122°30'0"W 122°29'0"W 122°28'0"W 122°27'0"W 122°26'0"W