

122°34'0"W 122°33'0"W 122°32'0"W 122°31'0"W 122°30'0"W 122°29'0"W 122°28'0"W 122°27'0"W 122°26'0"W 122°25'0"W 122°24'0"W 122°23'0"W



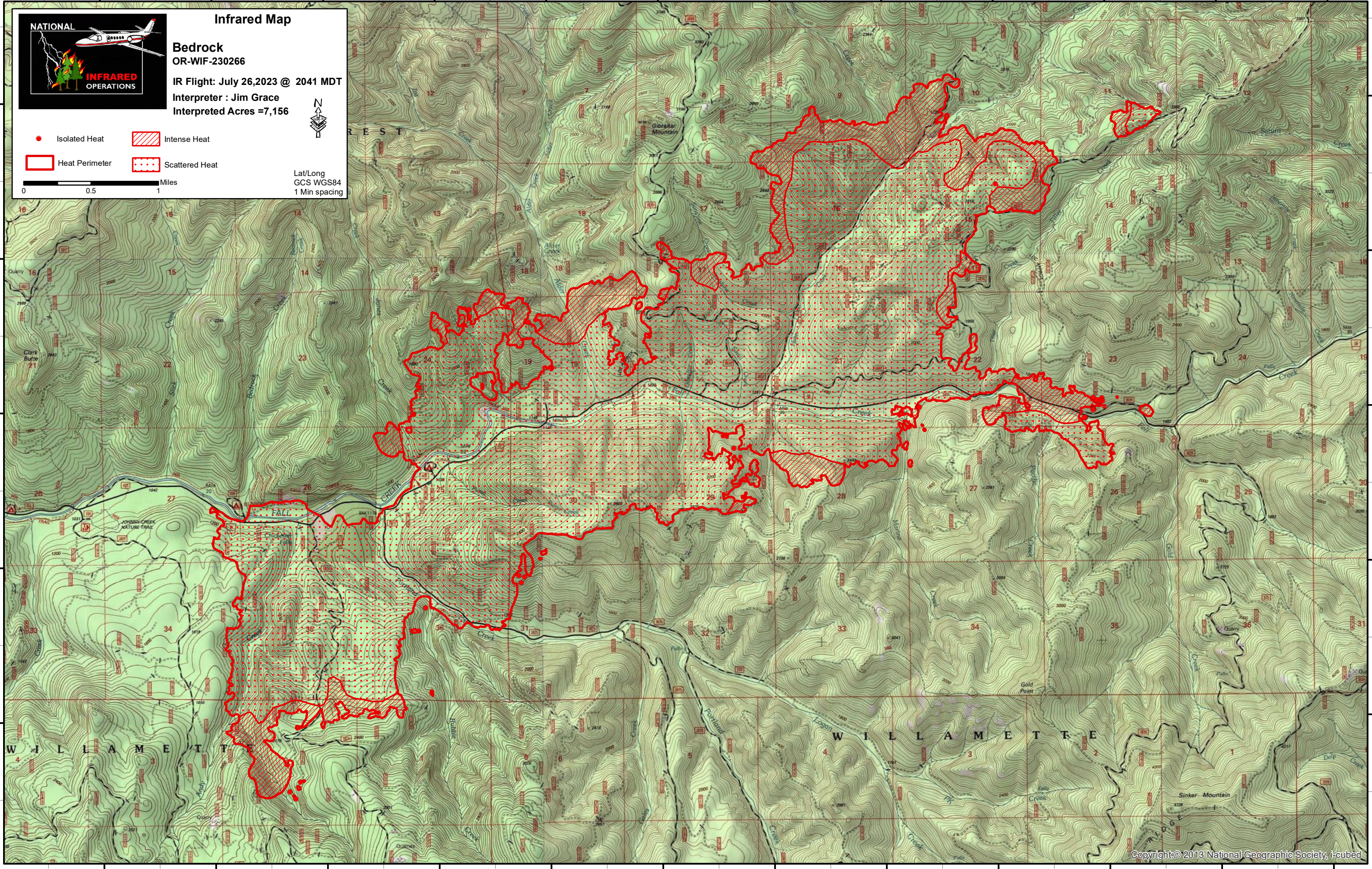
Infrared Map
Bedrock
OR-WIF-230266
IR Flight: July 26, 2023 @ 2041 MDT
Interpreter : Jim Grace
Interpreted Acres = 7,156

● Isolated Heat Intense Heat
 Heat Perimeter Scattered Heat

0 0.5 1 Miles
 Lat/Long
 GCS WGS84
 1 Min spacing

44°10'0"N
44°0'0"N
43°59'0"N
43°58'0"N
43°57'0"N

44°10'0"N
44°0'0"N
43°59'0"N
43°58'0"N
43°57'0"N



122°34'0"W 122°33'0"W 122°32'0"W 122°31'0"W 122°30'0"W 122°29'0"W 122°28'0"W 122°27'0"W 122°26'0"W 122°25'0"W 122°24'0"W 122°23'0"W