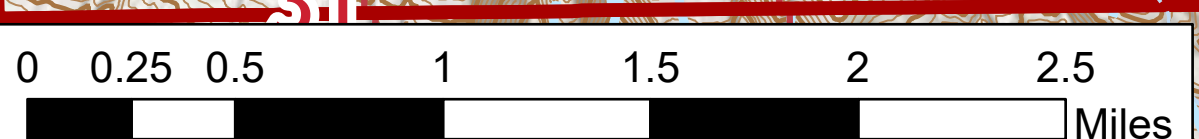


# Air Ops Map

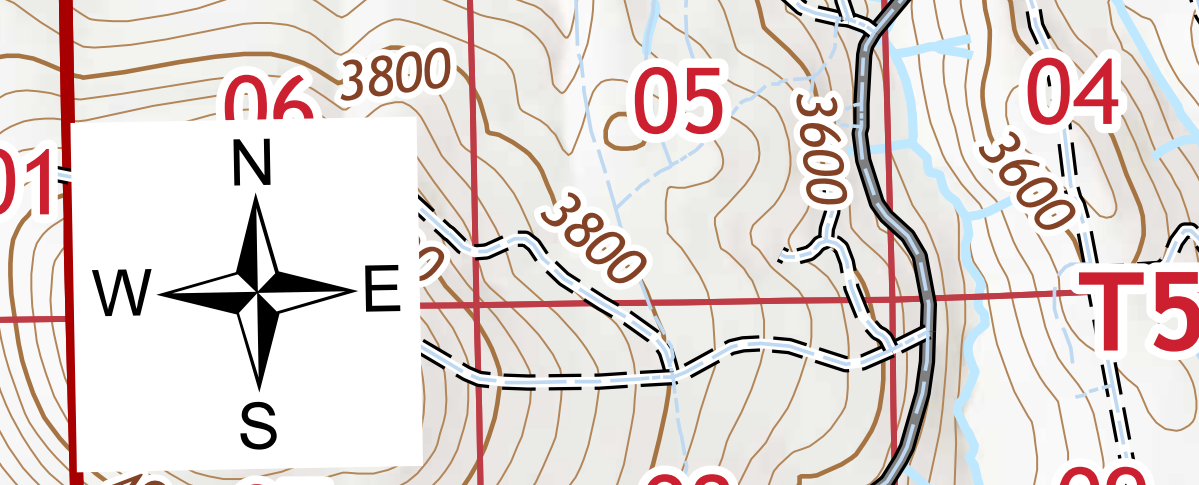
Boulder Fire  
OR-MHF-000583  
7/19/2023

233 acres at 07/18/2023 @ 1900



- Helispot
- Helibase
- Sling Site
- Division Break
- Drop Point
- Camp
- Staging Area
- Lookout
- Hot Spot - Spot Fire
- Repeater
- Completed Dozer Line
- Completed Hand Line
- Completed Road as Line
- Planned Secondary Line
- Access or Improved Road
- Escape Route
- UAS Launch and Recovery Zone
- Temporary Flight Restriction
- Contained Fire Perimeter
- Wildfire Perimeter

FC Point Type	Label	Latitude WGS84 DDM	Longitude WGS84 DDM
Camp	FOB	45° 13.526' N	121° 22.682' W
Drop Point	70	45° 12.646' N	121° 34.872' W
Drop Point	10	45° 12.380' N	121° 32.872' W
Drop Point	50	45° 13.796' N	121° 31.979' W
Drop Point	1	45° 11.833' N	121° 17.521' W
Drop Point	2	45° 14.734' N	121° 33.455' W
Drop Point	3	45° 15.294' N	121° 33.600' W
Drop Point	79	45° 14.348' N	121° 33.745' W
Drop Point	9	45° 14.955' N	121° 34.184' W
Helibase	5	45° 15.250' N	121° 17.521' W
Helispot	1	45° 17.424' N	121° 33.340' W
Helispot	2	45° 14.610' N	121° 33.790' W
Helispot	1	45° 12.258' N	121° 37.179' W
Helispot	4	45° 12.131' N	121° 33.169' W
Helispot	5	45° 13.670' N	121° 22.351' W
Lookout	1	45° 17.342' N	121° 33.942' W
Lookout	2	45° 17.238' N	121° 33.221' W
Repeater	CMD 2	45° 15.112' N	121° 32.253' W
Repeater	CMD 1	45° 19.077' N	121° 27.996' W
Sling Site	1	45° 14.953' N	121° 33.155' W
Staging Area	Rock Creek Staging	45° 11.626' N	121° 30.132' W
Staging Area	Gate Creek Staging	45° 11.517' N	121° 23.341' W
Staging Area	1	45° 12.829' N	121° 31.212' W



NW Team 10  
7/18/2023 1938  
Acres from IR and GPS  
North American 1983 Datum, Lat/Long  
Grid

