

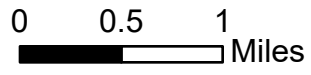
Pilot Map

Boulder Fire

OR-MHF-000583

7/19/2023

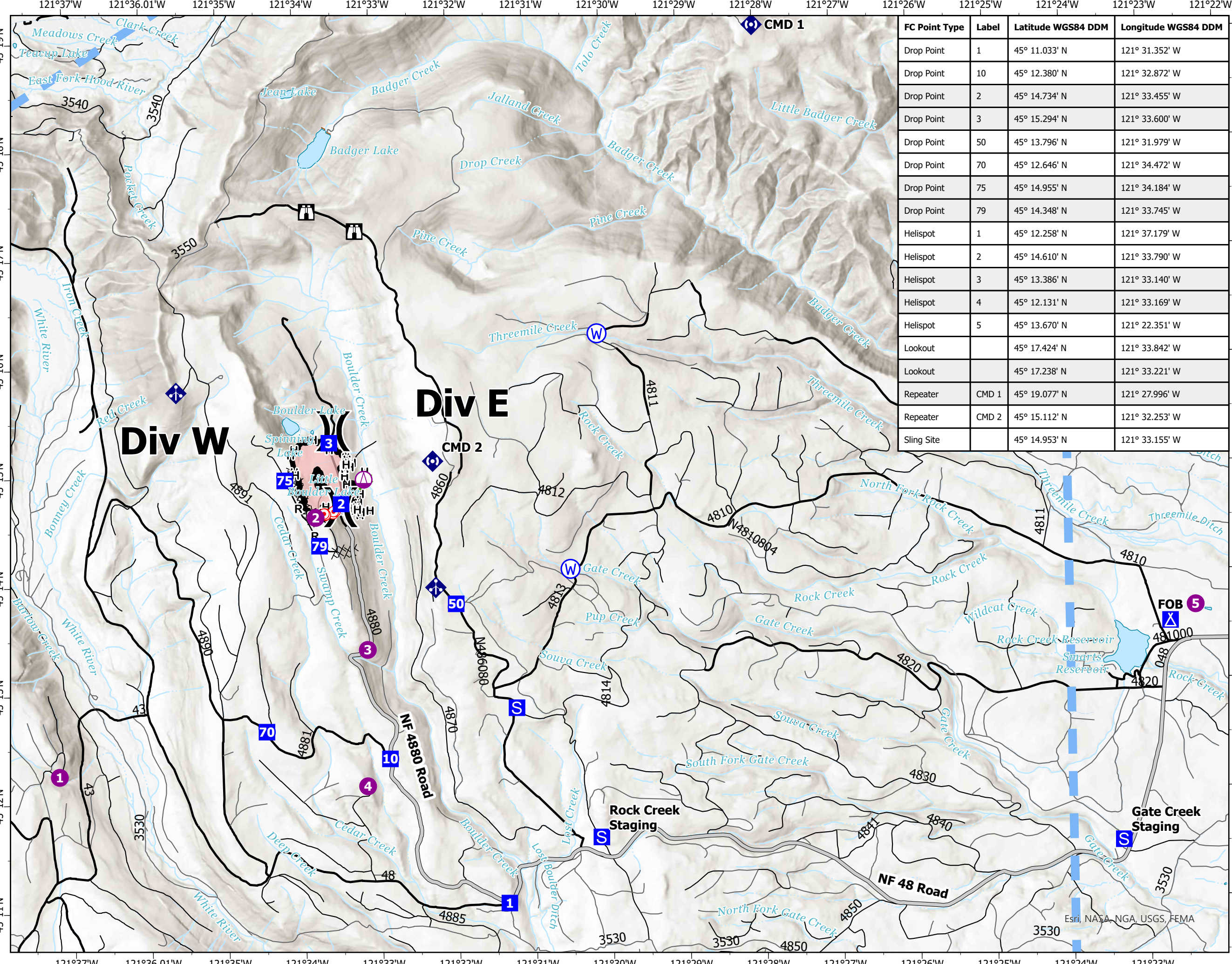
233 acres at 07/18/2023 @ 1900



- Helispot
- ⚠ Sling Site
-) Division Break
- Drop Point
- ⚡ Camp
- S Staging Area
- 🏠 Lookout
- Hot Spot - Spot Fire
- ⚡ Mobile Weather Unit
- Ⓜ Repeater
- W Water Source
- ⌘⌘ Completed Dozer Line
- H Completed Hand Line
- R Completed Road as Line
- Access or Improved Road
- Other
- Escape Route
- ⌘ UAS Launch and Recovery Zone
- Temporary Flight Restriction
- Contained
- Wildfire Daily Fire Perimeter
- Paved Road
- Gravel Road
- Natural/Unk Surface Road



NW Team 10
7/18/2023 1935
Acres from IR and GPS
North American 1983 Datum. LatLong Grid



FC Point Type	Label	Latitude WGS84 DDM	Longitude WGS84 DDM
Drop Point	1	45° 11.033' N	121° 31.352' W
Drop Point	10	45° 12.380' N	121° 32.872' W
Drop Point	2	45° 14.734' N	121° 33.455' W
Drop Point	3	45° 15.294' N	121° 33.600' W
Drop Point	50	45° 13.796' N	121° 31.979' W
Drop Point	70	45° 12.646' N	121° 34.472' W
Drop Point	75	45° 14.955' N	121° 34.184' W
Drop Point	79	45° 14.348' N	121° 33.745' W
Helispot	1	45° 12.258' N	121° 37.179' W
Helispot	2	45° 14.610' N	121° 33.790' W
Helispot	3	45° 13.386' N	121° 33.140' W
Helispot	4	45° 12.131' N	121° 33.169' W
Helispot	5	45° 13.670' N	121° 22.351' W
Lookout		45° 17.424' N	121° 33.842' W
Lookout		45° 17.238' N	121° 33.221' W
Repeater	CMD 1	45° 19.077' N	121° 27.996' W
Repeater	CMD 2	45° 15.112' N	121° 32.253' W
Sling Site		45° 14.953' N	121° 33.155' W

Esri, NASA, NGA, USGS, FEMA