

122°18.5'W 122°17.5'W 122°16.5'W 122°15.5'W 122°14.5'W 122°13.51'W 122°12.5'W 122°11.5'W 122°10.5'W 122°9.5'W 122°8.5'W 122°7.5'W 122°6.5'W 122°5.5'W 122°4.5'W 122°3.5'W 122°2.5'W 122°1.5'W 122°0.5'W 122°W 121°59'W 121°58'W 121°57'W 121°56'W 121°55'W 121°54'W

Medical Transportation
 Camp Creek
 OR-MHF-001199
 09/20/2023

2,055 acres at 09/15 @ 2100

1:29,344 | 9/19/2023 2017
 Acres from IR
 North American 1983 Datum, Lat/Long Grid

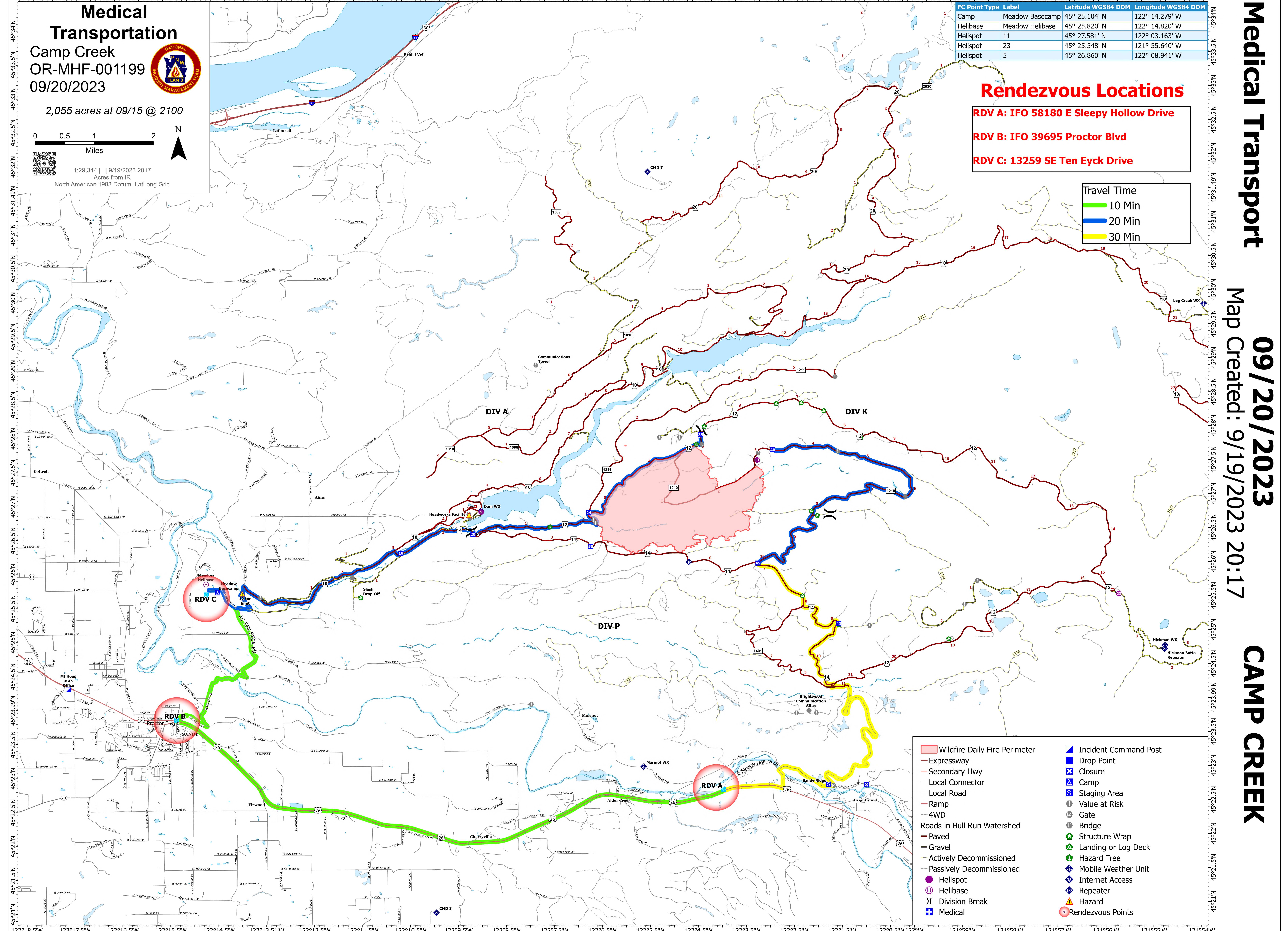
FC Point Type	Label	Latitude WGS84 DDM	Longitude WGS84 DDM
Camp	Meadow Basecamp	45° 25.104' N	122° 14.279' W
Helibase	Meadow Helibase	45° 25.820' N	122° 14.820' W
Helispot	11	45° 27.581' N	122° 03.163' W
Helispot	23	45° 25.548' N	121° 55.640' W
Helispot	5	45° 26.860' N	122° 08.941' W

Rendezvous Locations

- RDV A: IFO 58180 E Sleepy Hollow Drive**
- RDV B: IFO 39695 Proctor Blvd**
- RDV C: 13259 SE Ten Eyck Drive**

Travel Time

- 10 Min (Green line)
- 20 Min (Blue line)
- 30 Min (Yellow line)



- Wildfire Daily Fire Perimeter
- Expressway
- Secondary Hwy
- Local Connector
- Local Road
- Ramp
- 4WD
- Roads in Bull Run Watershed
 - Paved
 - Gravel
 - Actively Decommissioned
 - Passively Decommissioned
- Incident Command Post
- Drop Point
- Closure
- Camp
- Staging Area
- Value at Risk
- Gate
- Bridge
- Structure Wrap
- Landing or Log Deck
- Hazard Tree
- Mobile Weather Unit
- Helispot
- Internet Access
- Repeater
- Hazard
- Rendezvous Points
- Division Break
- Medical

122°18.5'W 122°17.5'W 122°16.5'W 122°15.5'W 122°14.5'W 122°13.51'W 122°12.5'W 122°11.5'W 122°10.5'W 122°9.5'W 122°8.5'W 122°7.5'W 122°6.5'W 122°5.5'W 122°4.5'W 122°3.5'W 122°2.5'W 122°1.5'W 122°0.5'W 122°W 121°59'W 121°58'W 121°57'W 121°56'W 121°55'W 121°54'W

Medical Transport
09/20/2023
 Map Created: 9/19/2023 20:17
CAMP CREEK