

Air Operations

Umpqua Fires

Branch II

OR-UPF-000345

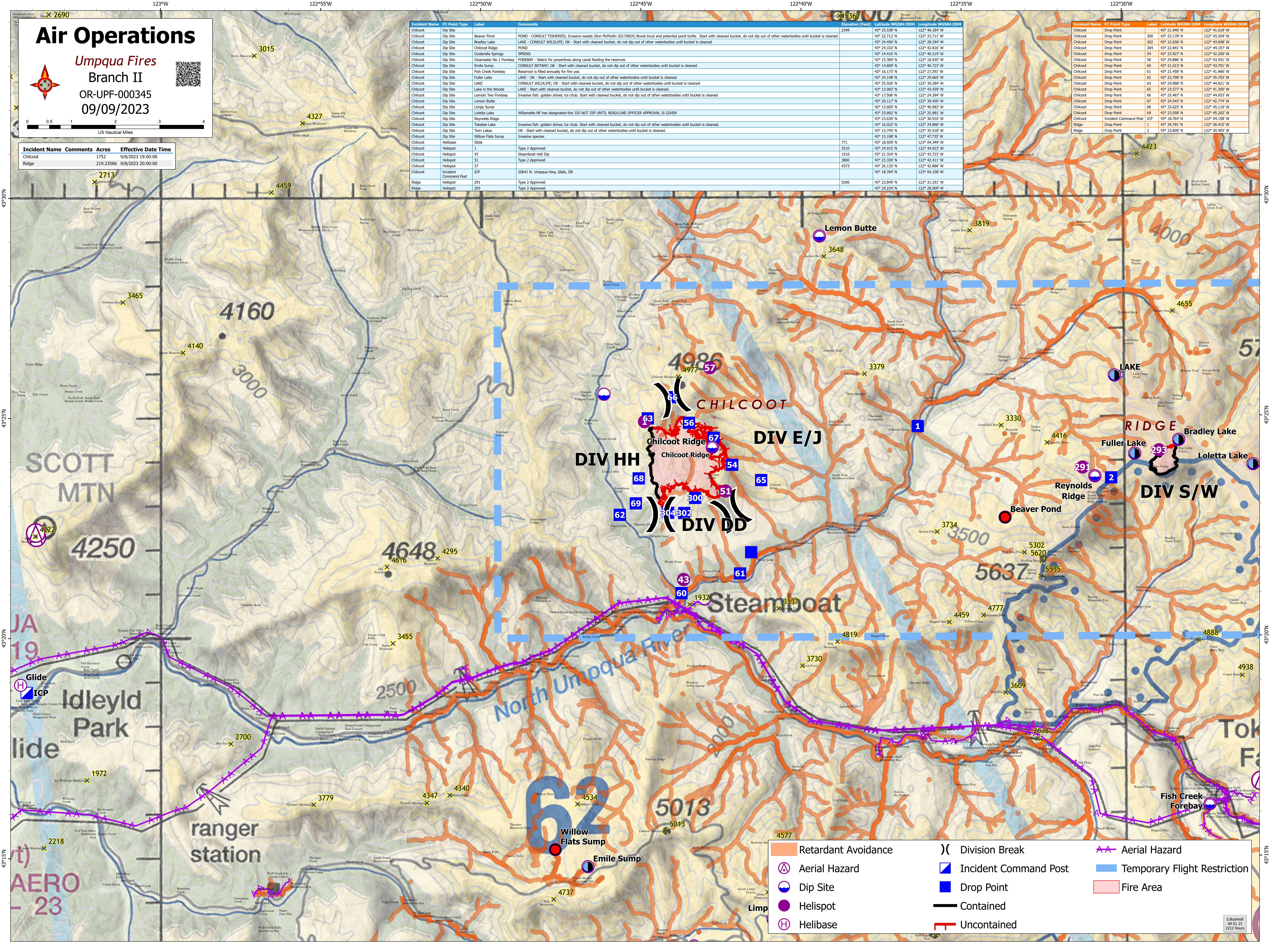
09/09/2023



| Incident Name | Comments | Acres | Effective Date Time |
|----------------|----------|-----------|---------------------|
| Chilcoot Ridge | 1752 | 219.23566 | 9/8/2023 19:00:00 |
| Chilcoot Ridge | 1752 | 219.23566 | 9/8/2023 20:00:00 |

| Incident Name | FC Point Type | Label | Comments | Elevation (Feet) | Latitude WGS84 DDM | Longitude WGS84 DDM |
|---------------|-----------------------|-------------------------|--|------------------|--------------------|---------------------|
| Chilcoot | Dip Site | Beaver Pond | POND - CONSULT FISHERIES; Invasive weeds (Ron McMillin 20170824) Brook trout and potential pond turtle. Start with cleaned bucket, do not dip out of other waterbodies until bucket is cleaned | 2349 | 43° 25.538' N | 122° 46.184' W |
| Chilcoot | Dip Site | Bradley Lake | LAKE - CONSULT WILDLIFE; OK - Start with cleaned bucket, do not dip out of other waterbodies until bucket is cleaned | 43° 24.456' N | 122° 28.294' W | |
| Chilcoot | Dip Site | Chilcoot Ridge | POND | 43° 24.332' N | 122° 42.816' W | |
| Chilcoot | Dip Site | Onderella Springs | SPRING | 43° 14.410' N | 122° 40.319' W | |
| Chilcoot | Dip Site | Clearwater No 1 Forebay | FOREBAY - Watch for powerlines along canal feeding the reservoir. | 43° 15.369' N | 122° 18.935' W | |
| Chilcoot | Dip Site | Emile Sump | CONSULT BOTANY; OK - Start with cleaned bucket, do not dip out of other waterbodies until bucket is cleaned | 43° 14.809' N | 122° 46.723' W | |
| Chilcoot | Dip Site | Fish Creek Forebay | Reservoir is filled annually for fire use. | 43° 16.733' N | 122° 27.391' W | |
| Chilcoot | Dip Site | Fuller Lake | LAKE - OK - Start with cleaned bucket, do not dip out of other waterbodies until bucket is cleaned | 43° 24.148' N | 122° 29.655' W | |
| Chilcoot | Dip Site | LAKE | CONSULT WILDLIFE; OK - Start with cleaned bucket, do not dip out of other waterbodies until bucket is cleaned | 43° 25.926' N | 122° 30.284' W | |
| Chilcoot | Dip Site | Lake in the Woods | LAKE - Start with cleaned bucket, do not dip out of other waterbodies until bucket is cleaned. | 43° 13.002' N | 122° 43.439' W | |
| Chilcoot | Dip Site | Lemola Lake | Invasive fish: golden shiner, tui chub. Start with cleaned bucket, do not dip out of other waterbodies until bucket is cleaned. | 43° 17.508' N | 122° 24.394' W | |
| Chilcoot | Dip Site | Lemola Two Forebay | OK - Start with cleaned bucket, do not dip out of other waterbodies until bucket is cleaned. | 43° 29.117' N | 122° 39.450' W | |
| Chilcoot | Dip Site | Limping Sump | 43° 16.733' N | 122° 40.362' W | | |
| Chilcoot | Dip Site | Loletta Lake | Willamette NF has designated this 'DO NOT DIP UNTIL READLINE OFFICER APPROVAL IS GIVEN' | 43° 25.982' N | 122° 25.981' W | |
| Chilcoot | Dip Site | Reynolds Ridge | 43° 23.639' N | 122° 30.910' W | | |
| Chilcoot | Dip Site | Twin Lakes | 43° 16.022' N | 122° 24.896' W | | |
| Chilcoot | Dip Site | Twin Lakes Sump | 43° 13.745' N | 122° 35.518' W | | |
| Chilcoot | Helibase | Glide | 43° 15.198' N | 122° 47.735' W | | |
| Chilcoot | Helibase | 1 | 43° 18.597' N | 122° 04.349' W | | |
| Chilcoot | Helibase | 2 | 43° 24.915' N | 122° 44.923' W | | |
| Chilcoot | Helibase | 3 | 43° 21.324' N | 122° 43.723' W | | |
| Chilcoot | Helibase | 4 | 43° 23.330' N | 122° 42.411' W | | |
| Chilcoot | Helibase | 5 | 43° 26.132' N | 122° 42.886' W | | |
| Chilcoot | Incident Command Post | ICP | 20641 N. Umpqua Hwy, Glide, OR | 43° 18.764' N | 123° 04.158' W | |
| Ridge | Helibase | 291 | 43° 23.840' N | 122° 31.291' W | | |
| Ridge | Helibase | 293 | 43° 24.224' N | 122° 28.909' W | | |

| Incident Name | FC Point Type | Label | Latitude WGS84 DDM | Longitude WGS84 DDM |
|---------------|-----------------------|-------|--------------------|---------------------|
| Chilcoot | Drop Point | 300 | 43° 21.940' N | 122° 41.618' W |
| Chilcoot | Drop Point | 302 | 43° 23.178' N | 122° 43.354' W |
| Chilcoot | Drop Point | 304 | 43° 22.891' N | 122° 44.197' W |
| Chilcoot | Drop Point | 304 | 43° 23.927' N | 122° 42.200' W |
| Chilcoot | Drop Point | 56 | 43° 24.886' N | 122° 43.541' W |
| Chilcoot | Drop Point | 60 | 43° 21.013' N | 122° 43.791' W |
| Chilcoot | Drop Point | 61 | 43° 21.458' N | 122° 41.560' W |
| Chilcoot | Drop Point | 62 | 43° 22.798' N | 122° 45.703' W |
| Chilcoot | Drop Point | 63 | 43° 24.988' N | 122° 44.821' W |
| Chilcoot | Drop Point | 65 | 43° 23.577' N | 122° 41.300' W |
| Chilcoot | Drop Point | 66 | 43° 25.467' N | 122° 44.053' W |
| Chilcoot | Drop Point | 67 | 43° 24.543' N | 122° 42.774' W |
| Chilcoot | Drop Point | 68 | 43° 23.625' N | 122° 45.140' W |
| Chilcoot | Drop Point | 69 | 43° 23.058' N | 122° 45.202' W |
| Chilcoot | Incident Command Post | ICP | 43° 18.764' N | 123° 04.158' W |
| Ridge | Drop Point | 1 | 43° 24.791' N | 122° 36.415' W |
| Ridge | Drop Point | 2 | 43° 23.600' N | 122° 30.403' W |



| | | |
|---------------------|-----------------------|------------------------------|
| Retardant Avoidance | Division Break | Aerial Hazard |
| Aerial Hazard | Incident Command Post | Temporary Flight Restriction |
| Dip Site | Drop Point | Fire Area |
| Helispot | Contained | Uncontained |
| Helibase | | |