

# Air Operations

Umpqua Fires

Branch II

OR-UPF-000345

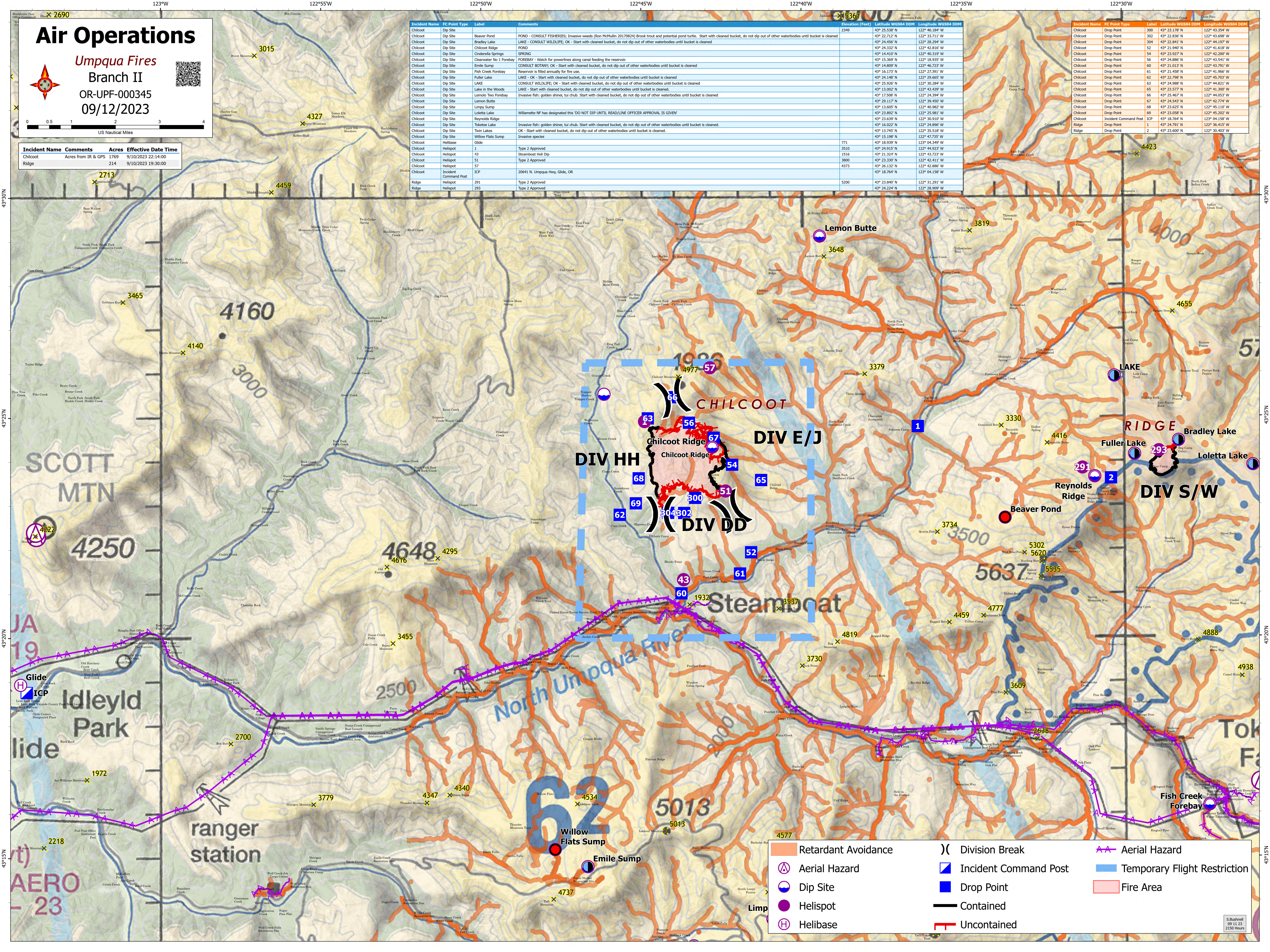
09/12/2023



Incident Name	Comments	Acres	Effective Date Time
Chilcoot	Acres from IR & GPS	1769	9/10/2023 22:14:00
Ridge		214	9/10/2023 19:30:00

Incident Name	FC Point Type	Label	Comments	Elevation (Feet)	Latitude WGS84 DDM	Longitude WGS84 DDM
Chilcoot	Dip Site	300	POND - CONSULT FISHERIES; Invasive weeds (Ron McMullin 20170824) Brook trout and potential pond turtle. Start with cleaned bucket, do not dip out of other waterbodies until bucket is cleaned	2349	43° 25.538' N	122° 46.184' W
Chilcoot	Dip Site	302	LAKE - CONSULT WILDLIFE; OK - Start with cleaned bucket, do not dip out of other waterbodies until bucket is cleaned	43° 22.712' N	122° 33.711' W	
Chilcoot	Dip Site	304	LAKE - OK - Start with cleaned bucket, do not dip out of other waterbodies until bucket is cleaned	43° 24.456' N	122° 28.294' W	
Chilcoot	Dip Site	52	POND	43° 24.332' N	122° 42.816' W	
Chilcoot	Dip Site	54	SPRING	43° 14.410' N	122° 40.319' W	
Chilcoot	Dip Site	56	FOREBAY - Watch for powerlines along canal feeding the reservoir.	43° 15.369' N	122° 18.935' W	
Chilcoot	Dip Site	60	RESERVOIR is filled annually for fire use.	43° 14.809' N	122° 46.723' W	
Chilcoot	Dip Site	61	LAKE - OK - Start with cleaned bucket, do not dip out of other waterbodies until bucket is cleaned	43° 16.733' N	122° 27.391' W	
Chilcoot	Dip Site	62	LAKE - OK - Start with cleaned bucket, do not dip out of other waterbodies until bucket is cleaned	43° 24.148' N	122° 29.665' W	
Chilcoot	Dip Site	63	LAKE	43° 25.926' N	122° 30.284' W	
Chilcoot	Dip Site	65	LAKE - Start with cleaned bucket, do not dip out of other waterbodies until bucket is cleaned.	43° 13.002' N	122° 43.439' W	
Chilcoot	Dip Site	66	Invasive fish: golden shiner, tui chub. Start with cleaned bucket, do not dip out of other waterbodies until bucket is cleaned.	43° 17.508' N	122° 24.394' W	
Chilcoot	Dip Site	67	OK - Start with cleaned bucket, do not dip out of other waterbodies until bucket is cleaned.	43° 29.117' N	122° 39.450' W	
Chilcoot	Dip Site	68	Willamette NF has designated this 'DO NOT DIP UNTIL READ/LINE OFFICER APPROVAL IS GIVEN'	43° 13.605' N	122° 40.982' W	
Chilcoot	Dip Site	51	Type 2 Approved	43° 23.992' N	122° 25.981' W	
Chilcoot	Dip Site	57	Type 2 Approved	43° 23.639' N	122° 30.910' W	
Chilcoot	Dip Site	291	Invasive fish: golden shiner, tui chub. Start with cleaned bucket, do not dip out of other waterbodies until bucket is cleaned.	43° 16.022' N	122° 24.896' W	
Chilcoot	Dip Site	293	OK - Start with cleaned bucket, do not dip out of other waterbodies until bucket is cleaned.	43° 13.745' N	122° 35.518' W	
Chilcoot	Helibase	1	Type 2 Approved	43° 15.198' N	122° 47.735' W	
Chilcoot	Helibase	3	Type 2 Approved	43° 18.599' N	122° 04.349' W	
Chilcoot	Helibase	41	Type 2 Approved	43° 24.915' N	122° 44.923' W	
Chilcoot	Helibase	51	Type 2 Approved	43° 21.324' N	122° 43.723' W	
Chilcoot	Helibase	57	Type 2 Approved	43° 23.330' N	122° 42.411' W	
Chilcoot	Incident Command Post	ICP	20641 N. Umpqua Hwy, Glide, OR	4373	43° 26.132' N	122° 42.886' W
Ridge	Helibase	291	Type 2 Approved	43° 18.764' N	123° 04.158' W	
Ridge	Helibase	293	Type 2 Approved	43° 23.840' N	122° 31.291' W	
Ridge	Helibase	293	Type 2 Approved	43° 24.224' N	122° 28.909' W	

Incident Name	FC Point Type	Label	Latitude WGS84 DDM	Longitude WGS84 DDM
Chilcoot	Drop Point	300	43° 23.178' N	122° 43.354' W
Chilcoot	Drop Point	302	43° 22.836' N	122° 43.698' W
Chilcoot	Drop Point	304	43° 22.841' N	122° 44.197' W
Chilcoot	Drop Point	52	43° 21.940' N	122° 41.618' W
Chilcoot	Drop Point	54	43° 23.927' N	122° 42.200' W
Chilcoot	Drop Point	56	43° 24.886' N	122° 43.541' W
Chilcoot	Drop Point	60	43° 21.013' N	122° 43.791' W
Chilcoot	Drop Point	61	43° 21.458' N	122° 45.110' W
Chilcoot	Drop Point	62	43° 22.798' N	122° 45.703' W
Chilcoot	Drop Point	63	43° 24.988' N	122° 44.821' W
Chilcoot	Drop Point	65	43° 23.577' N	122° 41.300' W
Chilcoot	Drop Point	66	43° 25.467' N	122° 44.053' W
Chilcoot	Drop Point	67	43° 24.543' N	122° 42.774' W
Chilcoot	Drop Point	68	43° 23.625' N	122° 45.110' W
Chilcoot	Drop Point	69	43° 23.058' N	122° 45.202' W
Chilcoot	Incident Command Post	ICP	43° 18.764' N	123° 04.158' W
Ridge	Drop Point	1	43° 24.791' N	122° 36.415' W
Ridge	Drop Point	2	43° 23.600' N	122° 30.403' W



Retardant Avoidance	Division Break	Aerial Hazard
Aerial Hazard	Incident Command Post	Temporary Flight Restriction
Dip Site	Drop Point	Fire Area
Helibase	Contained	Uncontained