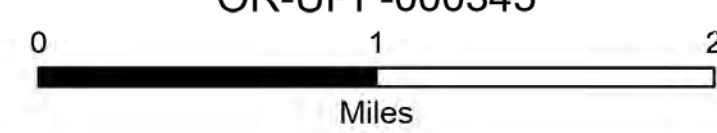


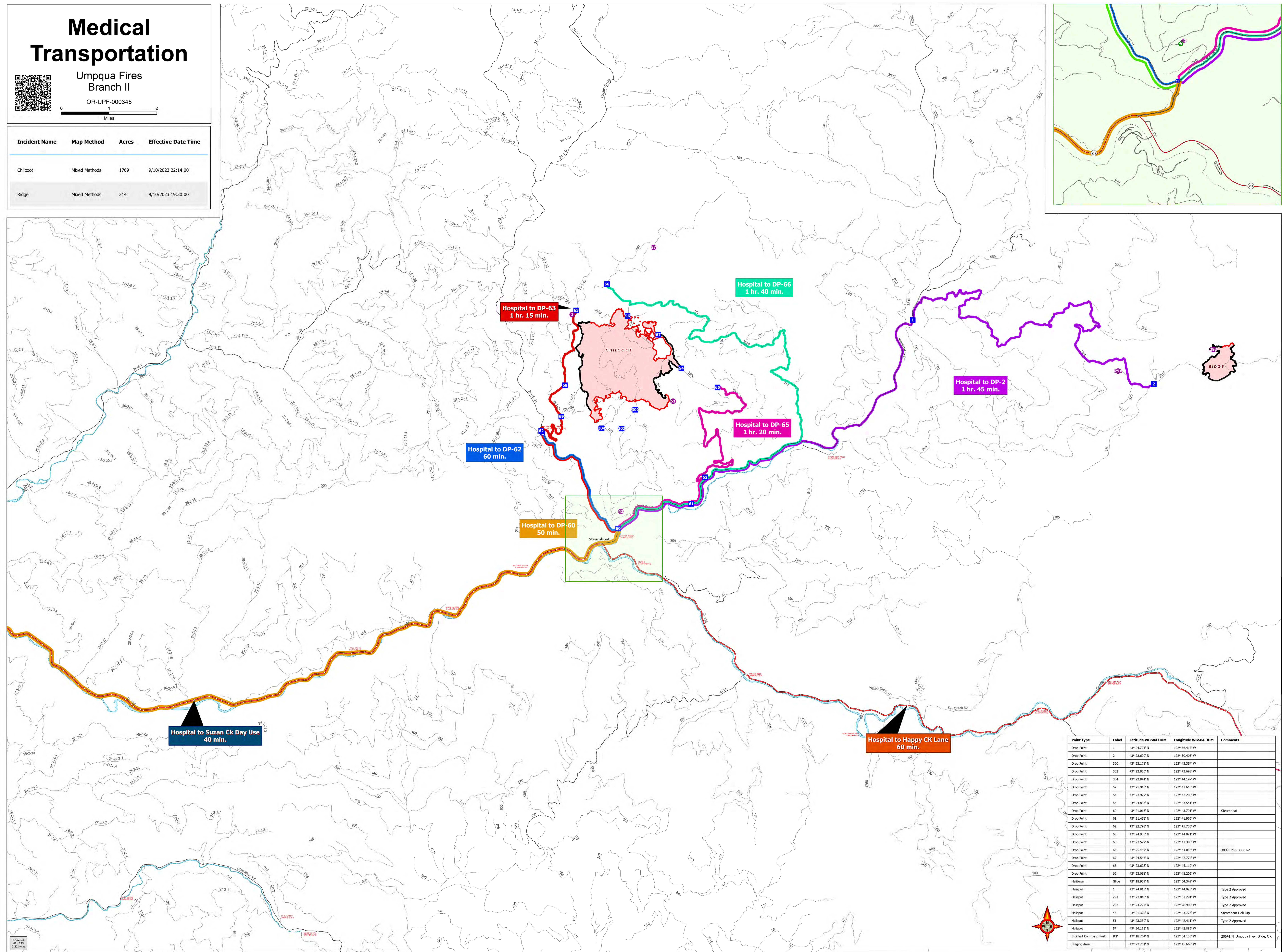
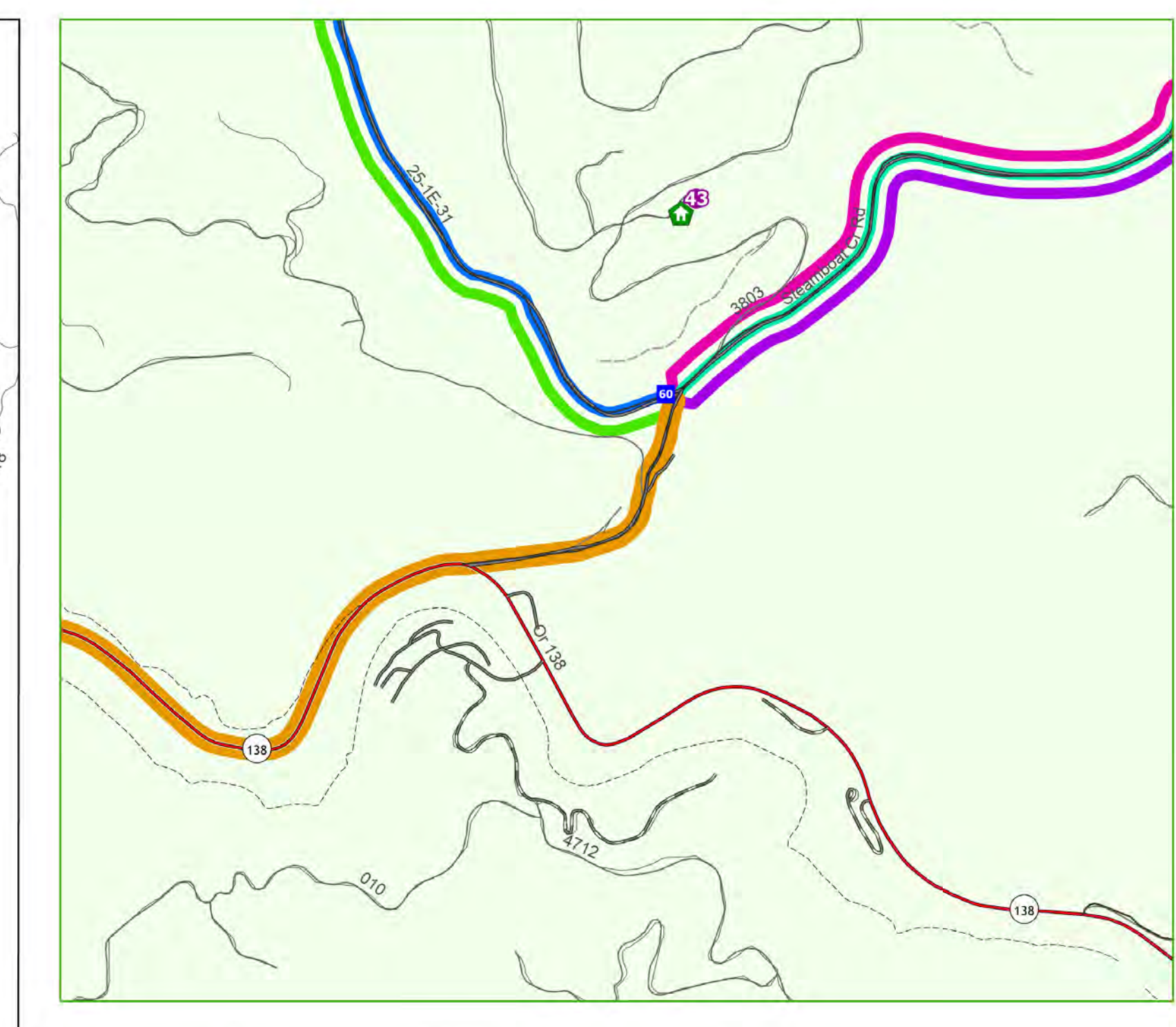
Medical Transportation

Umpqua Fires
Branch II

OR-UPF-000345



Incident Name	Map Method	Acres	Effective Date Time
Chilcoat	Mixed Methods	1769	9/10/2023 22:14:00
Ridge	Mixed Methods	214	9/10/2023 19:30:00



Hospital to DP-63
1 hr. 15 min.

Hospital to DP-66
1 hr. 40 min.

Hospital to DP-2
1 hr. 45 min.

Hospital to DP-65
1 hr. 20 min.

Hospital to DP-62
60 min.

Hospital to DP-60
50 min.

Hospital to Suzan Ck Day Use
40 min.

Hospital to Happy CK Lane
60 min.

Point Type	Label	Latitude WGS84 DDM	Longitude WGS84 DDM	Comments
Drop Point	1	43° 24.791' N	122° 36.415' W	
Drop Point	2	43° 23.603' N	122° 30.403' W	
Drop Point	300	43° 23.178' N	122° 43.354' W	
Drop Point	302	43° 22.830' N	122° 43.688' W	
Drop Point	304	43° 22.941' N	122° 44.197' W	
Drop Point	52	43° 21.940' N	122° 41.618' W	
Drop Point	54	43° 23.927' N	122° 42.200' W	
Drop Point	56	43° 24.886' N	122° 43.541' W	
Drop Point	60	43° 21.013' N	122° 43.791' W	Steamboat
Drop Point	61	43° 21.455' N	122° 41.966' W	
Drop Point	62	43° 22.798' N	122° 45.703' W	
Drop Point	63	43° 24.988' N	122° 44.821' W	
Drop Point	65	43° 23.577' N	122° 41.300' W	
Drop Point	66	43° 25.467' N	122° 44.053' W	3809 Rd & 3806 Rd
Drop Point	67	43° 24.543' N	122° 42.774' W	
Drop Point	68	43° 23.825' N	122° 45.110' W	
Drop Point	69	43° 23.058' N	122° 45.202' W	
Helibase	Glide	43° 18.939' N	123° 04.349' W	
Helipod	1	43° 24.915' N	122° 44.923' W	Type 2 Approved
Helipod	291	43° 23.840' N	122° 31.291' W	Type 2 Approved
Helipod	293	43° 24.224' N	122° 28.909' W	Type 2 Approved
Helipod	43	43° 21.324' N	122° 43.723' W	Steamboat Helipod
Helipod	51	43° 23.330' N	122° 42.411' W	Type 2 Approved
Helipod	57	43° 26.132' N	122° 42.886' W	
Incident Command Post	ICP	43° 18.764' N	123° 04.159' W	20641 N Umpqua Hwy, Glide, OR
Staging Area		43° 22.761' N	122° 45.665' W	

