

Air Operations

Umpqua Fires

Branch II

OR-UPF-000345

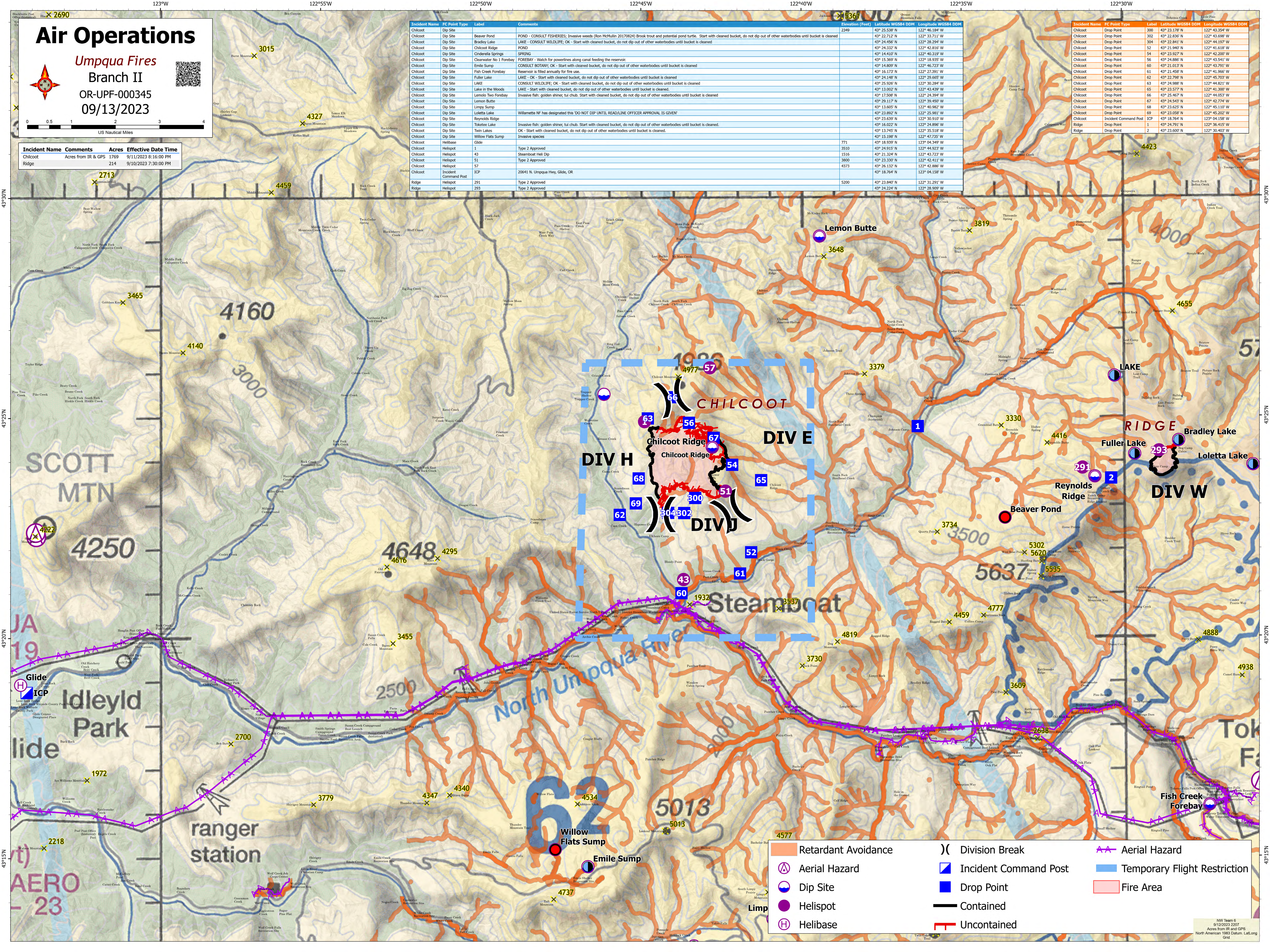
09/13/2023



Incident Name	Comments	Acres	Effective Date Time
Chilcoat	Acres from IR & GPS	1769	9/11/2023 8:16:00 PM
Ridge		214	9/10/2023 7:30:00 PM

Incident Name	FC Point Type	Label	Comments	Elevation (Feet)	Latitude WGS84 DDM	Longitude WGS84 DDM
Chilcoat	Dip Site	300	POND - CONSULT FISHERIES; Invasive weeds (Ron McMullin 20170824) Brook trout and potential pond turtle. Start with cleaned bucket, do not dip out of other waterbodies until bucket is cleaned	2349	43° 25.538' N	122° 46.184' W
Chilcoat	Dip Site	302	LAKE - CONSULT WILDLIFE; OK - Start with cleaned bucket, do not dip out of other waterbodies until bucket is cleaned		43° 22.712' N	122° 33.711' W
Chilcoat	Dip Site	304	LAKE - CONSULT WILDLIFE; OK - Start with cleaned bucket, do not dip out of other waterbodies until bucket is cleaned		43° 24.456' N	122° 28.294' W
Chilcoat	Dip Site	52	POND		43° 24.332' N	122° 42.816' W
Chilcoat	Dip Site	54	SPRING		43° 14.410' N	122° 40.319' W
Chilcoat	Dip Site	56	FOREBAY - Watch for powerlines along canal feeding the reservoir.		43° 15.369' N	122° 18.935' W
Chilcoat	Dip Site	60	RESERVOIR is filled annually for fire use.		43° 14.809' N	122° 46.723' W
Chilcoat	Dip Site	61	LAKE - OK - Start with cleaned bucket, do not dip out of other waterbodies until bucket is cleaned		43° 16.773' N	122° 27.391' W
Chilcoat	Dip Site	62	LAKE - OK - Start with cleaned bucket, do not dip out of other waterbodies until bucket is cleaned		43° 24.148' N	122° 29.655' W
Chilcoat	Dip Site	63	LAKE - Start with cleaned bucket, do not dip out of other waterbodies until bucket is cleaned		43° 25.926' N	122° 30.284' W
Chilcoat	Dip Site	65	LAKE - Start with cleaned bucket, do not dip out of other waterbodies until bucket is cleaned		43° 13.002' N	122° 43.439' W
Chilcoat	Dip Site	66	Invasive fish: golden shiner, tui chub. Start with cleaned bucket, do not dip out of other waterbodies until bucket is cleaned		43° 17.508' N	122° 24.394' W
Chilcoat	Dip Site	67	LAKE - Start with cleaned bucket, do not dip out of other waterbodies until bucket is cleaned		43° 29.117' N	122° 39.450' W
Chilcoat	Dip Site	68	Invasive fish: golden shiner, tui chub. Start with cleaned bucket, do not dip out of other waterbodies until bucket is cleaned		43° 13.605' N	122° 40.982' W
Chilcoat	Dip Site	69	Invasive fish: golden shiner, tui chub. Start with cleaned bucket, do not dip out of other waterbodies until bucket is cleaned		43° 23.992' N	122° 25.981' W
Chilcoat	Dip Site	70	Invasive fish: golden shiner, tui chub. Start with cleaned bucket, do not dip out of other waterbodies until bucket is cleaned		43° 23.639' N	122° 30.910' W
Chilcoat	Dip Site	71	Invasive fish: golden shiner, tui chub. Start with cleaned bucket, do not dip out of other waterbodies until bucket is cleaned		43° 16.022' N	122° 24.896' W
Chilcoat	Dip Site	72	Invasive species		43° 13.745' N	122° 35.518' W
Chilcoat	Helibase	036		771	43° 15.198' N	122° 47.735' W
Chilcoat	Helibase	1	Type 2 Approved	3510	43° 18.599' N	122° 04.349' W
Chilcoat	Helibase	43	Type 2 Approved	1516	43° 24.915' N	122° 44.923' W
Chilcoat	Helibase	51	Type 2 Approved	3800	43° 21.324' N	122° 43.723' W
Chilcoat	Helibase	57	Type 2 Approved	4373	43° 23.330' N	122° 42.411' W
Chilcoat	Incident Command Post	ICP	20641 N. Umpqua Hwy, Glide, OR		43° 26.132' N	122° 42.886' W
Ridge	Helibase	291	Type 2 Approved	5200	43° 18.764' N	123° 04.158' W
Ridge	Helibase	293	Type 2 Approved		43° 23.840' N	122° 31.291' W
Ridge	Helibase	293	Type 2 Approved		43° 24.224' N	122° 28.909' W

Incident Name	FC Point Type	Label	Latitude WGS84 DDM	Longitude WGS84 DDM
Chilcoat	Drop Point	300	43° 23.178' N	122° 43.354' W
Chilcoat	Drop Point	302	43° 22.836' N	122° 43.698' W
Chilcoat	Drop Point	304	43° 22.841' N	122° 44.107' W
Chilcoat	Drop Point	52	43° 21.940' N	122° 41.618' W
Chilcoat	Drop Point	54	43° 23.927' N	122° 42.200' W
Chilcoat	Drop Point	56	43° 24.886' N	122° 43.541' W
Chilcoat	Drop Point	60	43° 21.013' N	122° 43.791' W
Chilcoat	Drop Point	61	43° 21.458' N	122° 45.110' W
Chilcoat	Drop Point	62	43° 22.798' N	122° 45.703' W
Chilcoat	Drop Point	63	43° 24.988' N	122° 44.821' W
Chilcoat	Drop Point	65	43° 23.577' N	122° 41.300' W
Chilcoat	Drop Point	66	43° 25.467' N	122° 44.053' W
Chilcoat	Drop Point	67	43° 24.543' N	122° 42.774' W
Chilcoat	Drop Point	68	43° 23.625' N	122° 45.110' W
Chilcoat	Drop Point	69	43° 23.058' N	122° 45.202' W
Chilcoat	Incident Command Post	ICP	43° 18.764' N	123° 04.158' W
Ridge	Drop Point	1	43° 24.791' N	122° 36.415' W
Ridge	Drop Point	2	43° 23.600' N	122° 30.403' W



Retardant Avoidance	Division Break	Aerial Hazard
Aerial Hazard	Incident Command Post	Temporary Flight Restriction
Dip Site	Drop Point	Fire Area
Helispot	Contained	Uncontained
Helibase		