

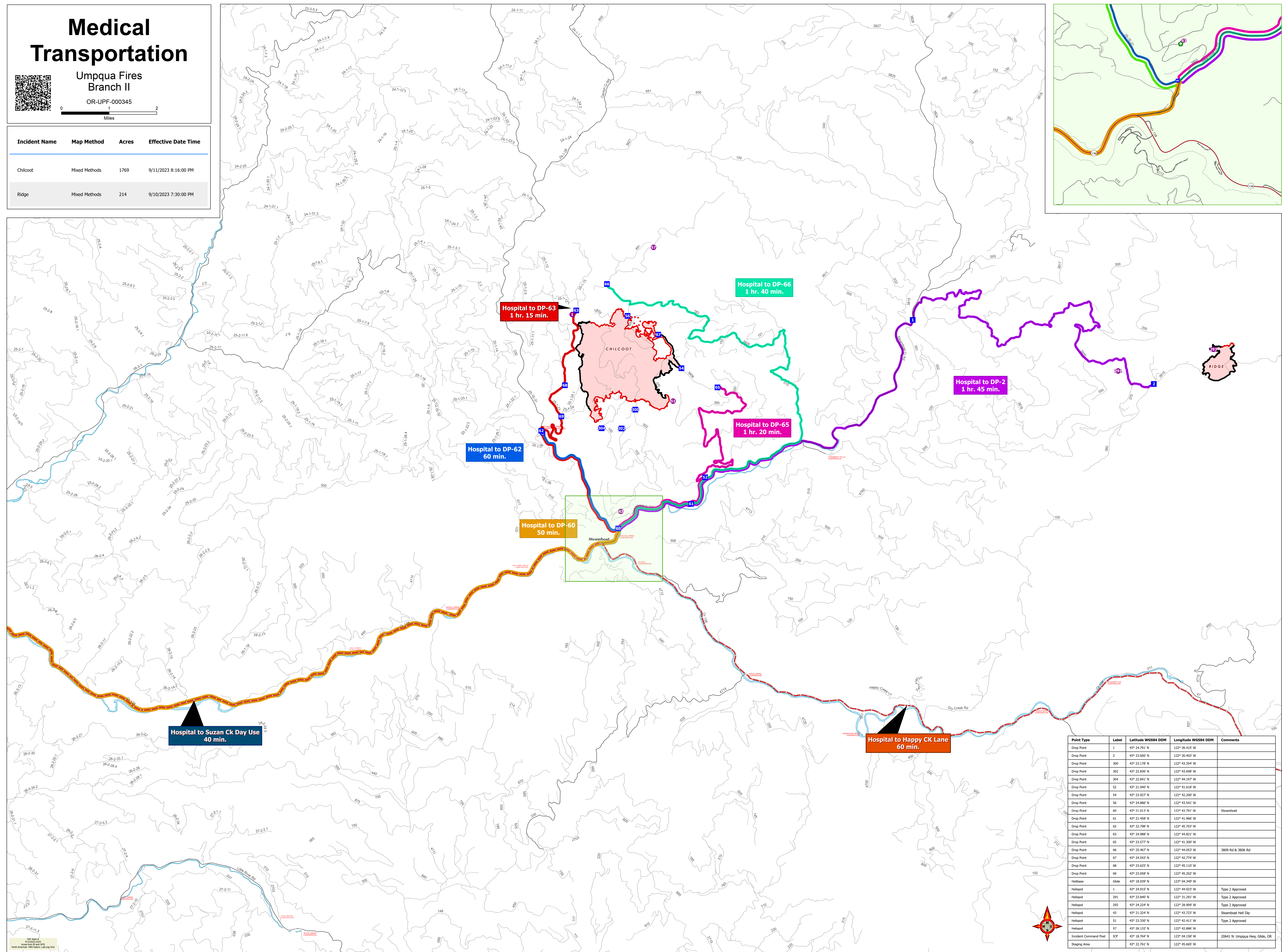
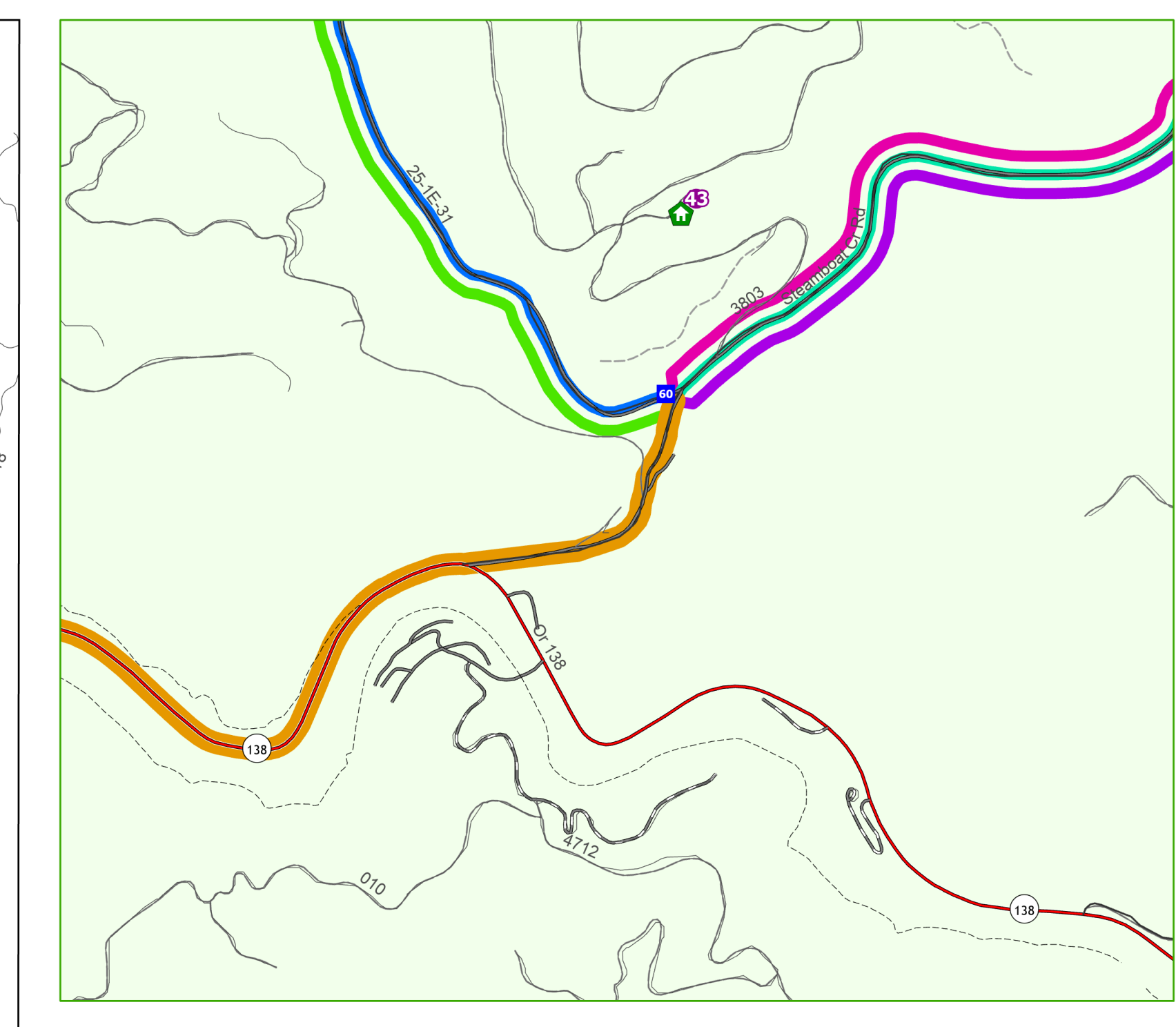
Medical Transportation

Umpqua Fires
Branch II

OR-UPF-000345



Incident Name	Map Method	Acres	Effective Date Time
Chilcoat	Mixed Methods	1769	9/11/2023 8:16:00 PM
Ridge	Mixed Methods	214	9/10/2023 7:30:00 PM



Hospital to DP-63
1 hr. 15 min.

Hospital to DP-66
1 hr. 40 min.

Hospital to DP-2
1 hr. 45 min.

Hospital to DP-65
1 hr. 20 min.

Hospital to DP-62
60 min.

Hospital to DP-60
50 min.

Hospital to Suzan Ck Day Use
40 min.

Hospital to Happy CK Lane
60 min.

Point Type	Label	Latitude WGS84 DDM	Longitude WGS84 DDM	Comments
Drop Point	1	43° 24.791' N	122° 36.415' W	
Drop Point	2	43° 23.607' N	122° 36.403' W	
Drop Point	300	43° 23.178' N	122° 43.354' W	
Drop Point	302	43° 23.830' N	122° 43.698' W	
Drop Point	304	43° 23.941' N	122° 44.197' W	
Drop Point	52	43° 21.940' N	122° 41.618' W	
Drop Point	54	43° 23.927' N	122° 42.200' W	
Drop Point	56	43° 24.886' N	122° 43.541' W	
Drop Point	60	43° 21.013' N	122° 43.791' W	Steamboat
Drop Point	61	43° 21.458' N	122° 41.966' W	
Drop Point	62	43° 22.798' N	122° 45.703' W	
Drop Point	63	43° 24.988' N	122° 44.821' W	
Drop Point	65	43° 23.577' N	122° 41.300' W	
Drop Point	66	43° 25.467' N	122° 44.057' W	3809 Rd & 3806 Rd
Drop Point	67	43° 24.547' N	122° 42.774' W	
Drop Point	68	43° 23.625' N	122° 46.110' W	
Drop Point	69	43° 23.058' N	122° 45.202' W	
Helibase	Glide	43° 18.939' N	122° 04.349' W	
Helipot	1	43° 24.915' N	122° 44.923' W	Type 2 Approved
Helipot	291	43° 23.840' N	122° 31.291' W	Type 2 Approved
Helipot	293	43° 24.224' N	122° 28.909' W	Type 2 Approved
Helipot	43	43° 21.324' N	122° 43.723' W	Steamboat Hill Dip
Helipot	51	43° 23.330' N	122° 42.411' W	Type 2 Approved
Helipot	57	43° 26.132' N	122° 42.880' W	
Incident Command Post	ICP	43° 18.764' N	122° 04.158' W	20641 N Umpqua Hwy, Glide, OR
Staging Area		43° 22.761' N	122° 45.665' W	