


Transportation Umpqua Fires

Branch II

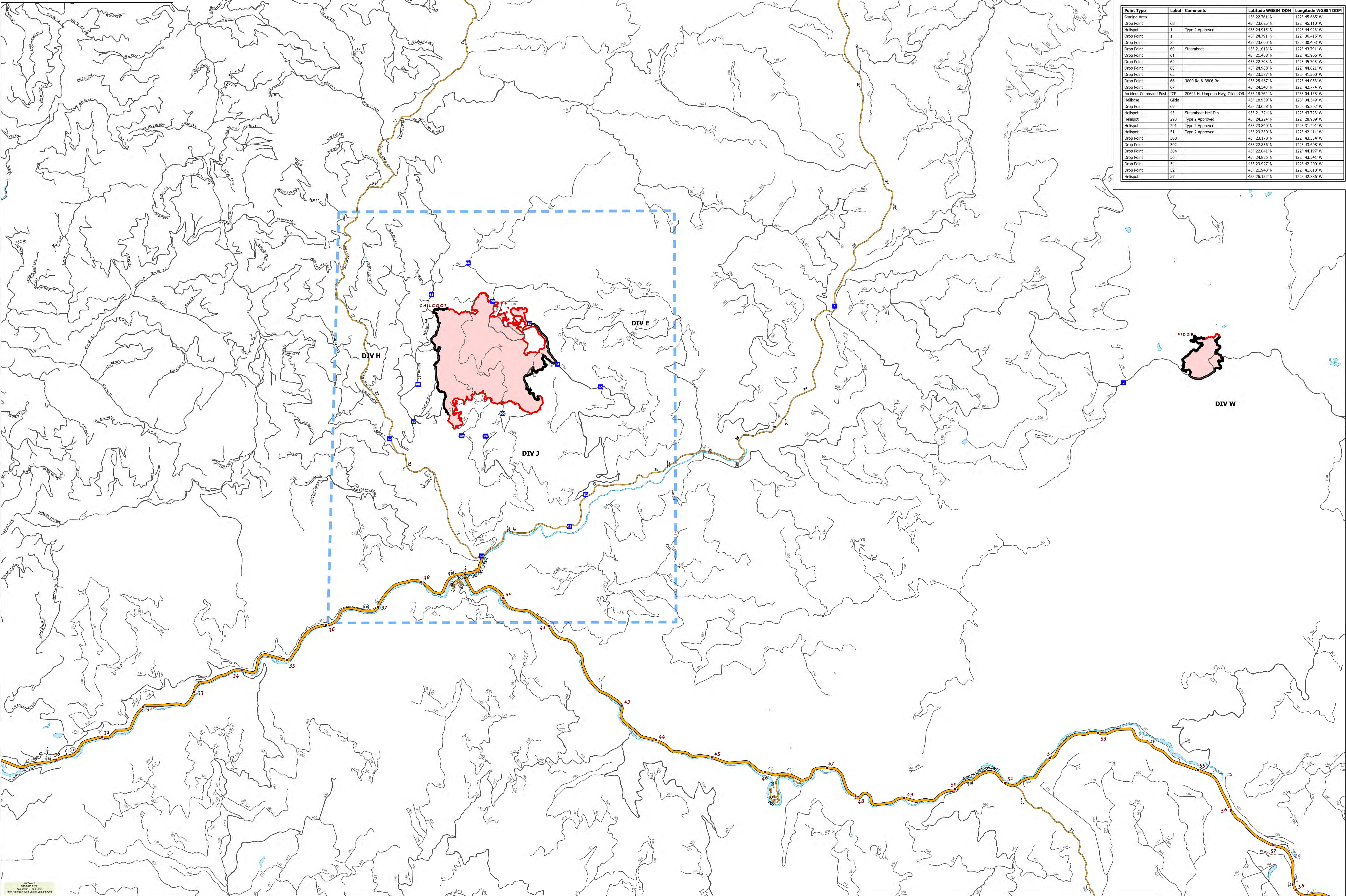
OR-UPF-000345
09/13/2023



0 0.5 1 2
Miles

Drop Point	Access or Improved Road	Temporary Flight Restriction	Forest	Primary	Secondary	Contained	Uncontained	Fire Area
------------	-------------------------	------------------------------	--------	---------	-----------	-----------	-------------	-----------

Point Type	Label	Comments	Latitude WGS84 DDM	Longitude WGS84 DDM
Staging Area			43° 22.761' N	122° 45.665' W
Drop Point	68		43° 23.625' N	122° 45.110' W
Helispot	1	Type 2 Approved	43° 24.915' N	122° 44.923' W
Drop Point	1		43° 24.791' N	122° 36.415' W
Drop Point	2		43° 23.600' N	122° 50.403' W
Drop Point	60	Steamboat	43° 21.013' N	122° 43.791' W
Drop Point	61		43° 21.458' N	122° 41.966' W
Drop Point	62		43° 22.798' N	122° 45.703' W
Drop Point	63		43° 24.988' N	122° 44.821' W
Drop Point	65		43° 23.577' N	122° 41.300' W
Drop Point	66	3809 Rd & 3806 Rd	43° 25.467' N	122° 44.053' W
Drop Point	67		43° 24.543' N	122° 42.774' W
Incident Command Post	ICP	20641 N. Umpqua Hwy, Glide, OR	43° 18.764' N	123° 04.158' W
Helibase	Glide		43° 18.939' N	123° 04.349' W
Drop Point	69		43° 23.058' N	122° 45.202' W
Helispot	43	Steamboat Hill Clip	43° 21.324' N	122° 43.722' W
Helispot	293	Type 2 Approved	43° 24.224' N	122° 28.909' W
Helispot	291	Type 2 Approved	43° 23.840' N	122° 31.291' W
Helispot	51	Type 2 Approved	43° 23.330' N	122° 42.411' W
Drop Point	300		43° 23.178' N	122° 43.354' W
Drop Point	302		43° 22.836' N	122° 43.698' W
Drop Point	304		43° 22.841' N	122° 44.197' W
Drop Point	56		43° 24.886' N	122° 43.541' W
Drop Point	54		43° 23.927' N	122° 42.200' W
Drop Point	52		43° 21.940' N	122° 41.618' W
Helispot	57		43° 26.132' N	122° 42.886' W



1000 Feet
NAD 83
North American 1983 Datum
North American 1983 Datum
North American 1983 Datum
North American 1983 Datum