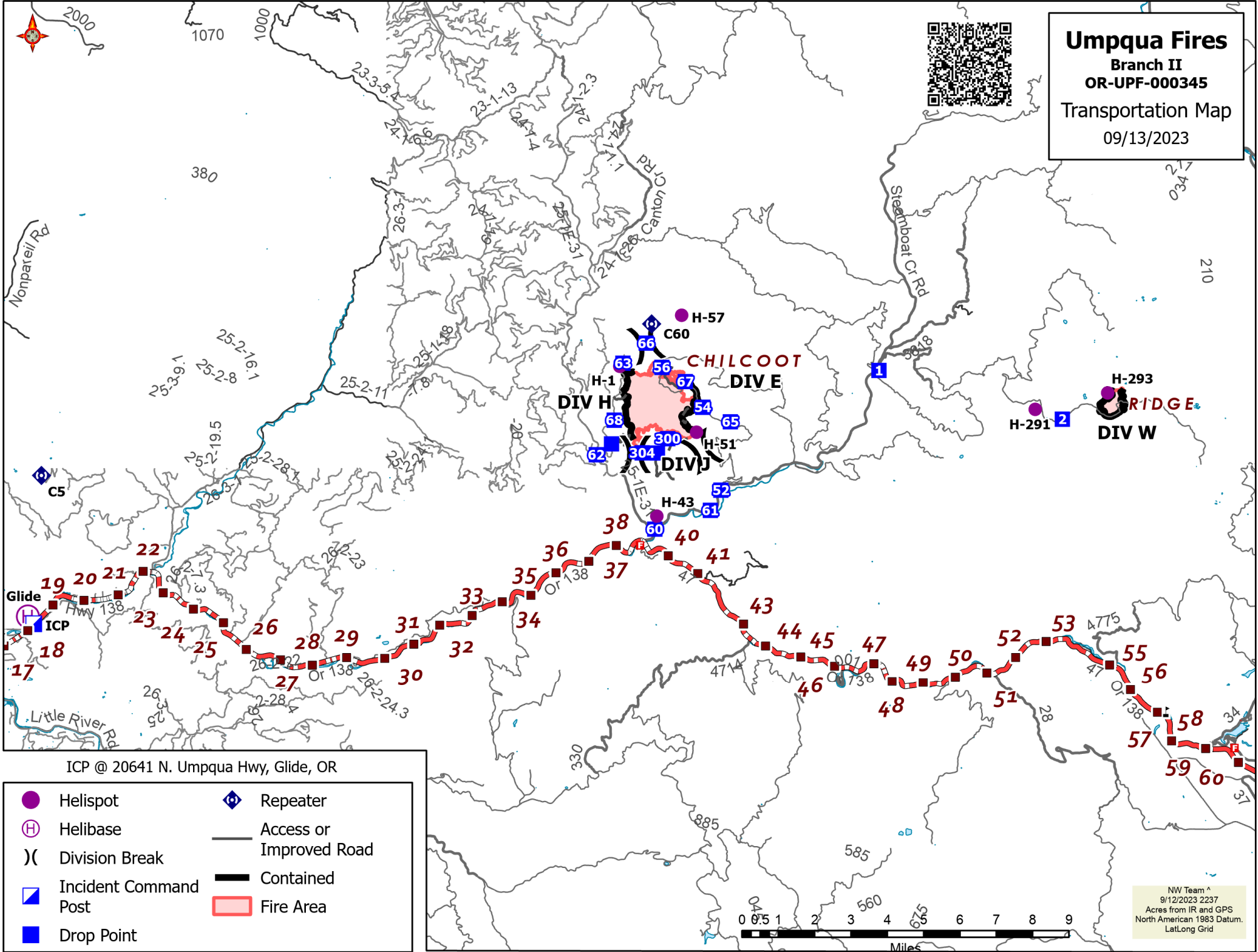




Umpqua Fires
 Branch II
 OR-UPF-000345
 Transportation Map
 09/13/2023



ICP @ 20641 N. Umpqua Hwy, Glide, OR

- | | | | |
|--|-----------------------|--|-------------------------|
| | Helispot | | Repeater |
| | Helibase | | Access or Improved Road |
| | Division Break | | Contained |
| | Incident Command Post | | Fire Area |
| | Drop Point | | |

NW Team ^
 9/12/2023 2237
 Acres from IR and GPS
 North American 1983 Datum.
 LatLong Grid