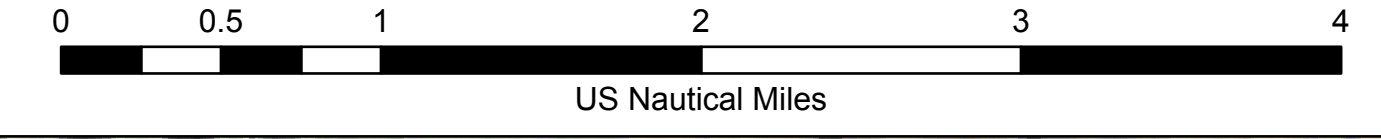


Air Operations

Umpqua Fires
Chilcoot, Ridge



09/14/2023

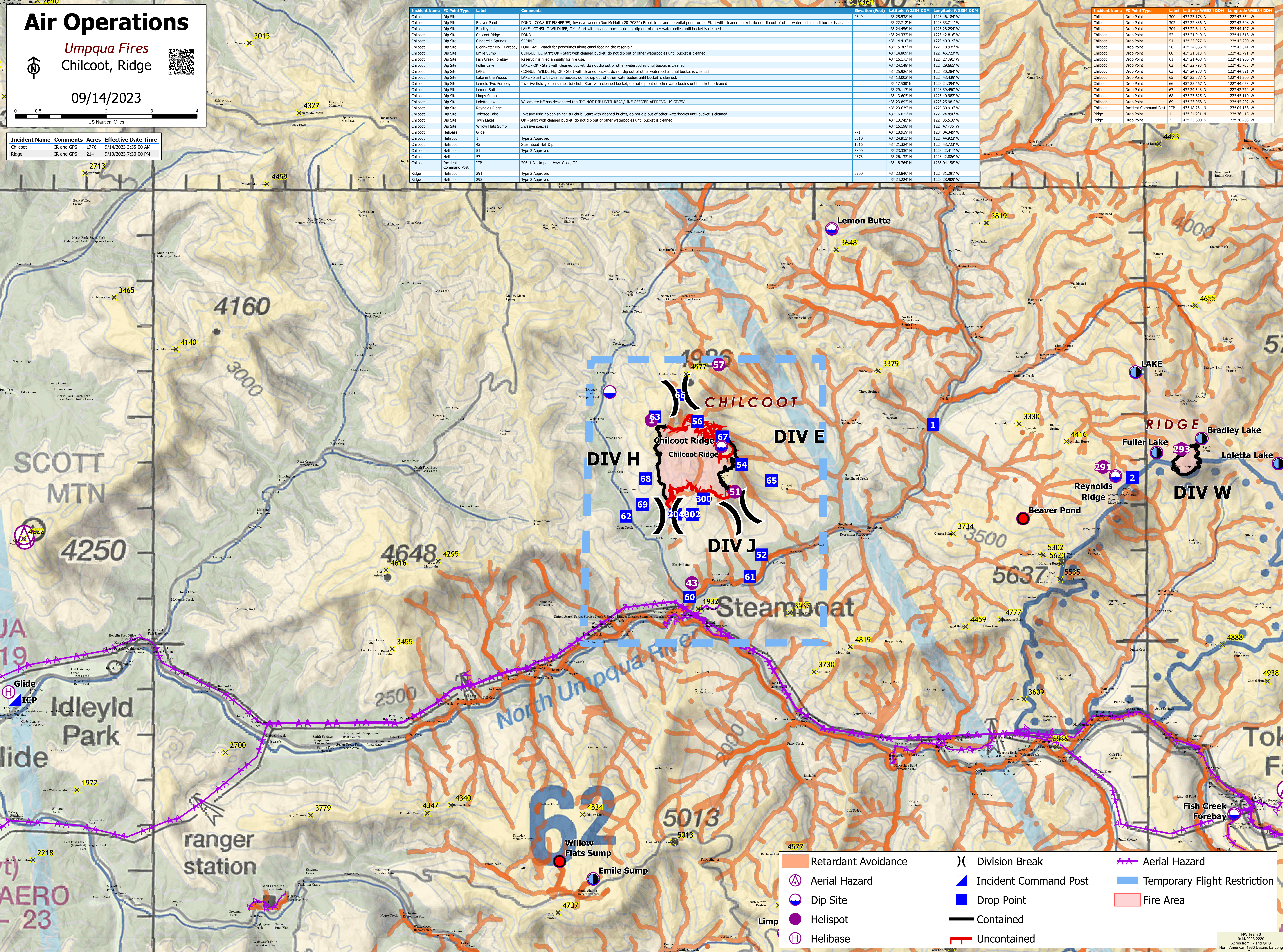


Incident Name	Comments	Acres	Effective Date Time
Chilcoot	IR and GPS	1776	9/14/2023 3:55:00 AM
Ridge	IR and GPS	214	9/10/2023 7:30:00 PM

Incident Name	FC Point Type	Label	Comments
Chilcoot	Dip Site	Beaver Pond	POND - CONSULT FISHERIES; Invasive weeds (Ron McMillin 20170824) Brook trout and potential pond turtle. Start with cleaned bucket, do not dip out of other waterbodies until bucket is cleaned
Chilcoot	Dip Site	Bradley Lake	LAKE - CONSULT WILDLIFE; OK - Start with cleaned bucket, do not dip out of other waterbodies until bucket is cleaned
Chilcoot	Dip Site	Chilcoot Ridge	POND
Chilcoot	Dip Site	Cinderella Springs	SPRING
Chilcoot	Dip Site	Clearwater No 1 Forebay	FOREBAY - Watch for powerlines along canal feeding the reservoir.
Chilcoot	Dip Site	Emile Sump	CONSULT BOTANY; OK - Start with cleaned bucket, do not dip out of other waterbodies until bucket is cleaned
Chilcoot	Dip Site	Fish Creek Forebay	Reservoir is filled annually for fire use.
Chilcoot	Dip Site	Fuller Lake	LAKE - OK - Start with cleaned bucket, do not dip out of other waterbodies until bucket is cleaned
Chilcoot	Dip Site	Lake	CONSULT WILDLIFE; OK - Start with cleaned bucket, do not dip out of other waterbodies until bucket is cleaned
Chilcoot	Dip Site	Lake in the Woods	LAKE - Start with cleaned bucket, do not dip out of other waterbodies until bucket is cleaned.
Chilcoot	Dip Site	Lemolo Two Forebay	Invasive fish: golden shiner, tui chub. Start with cleaned bucket, do not dip out of other waterbodies until bucket is cleaned
Chilcoot	Dip Site	Lemon Butte	
Chilcoot	Dip Site	Lumpy Sumps	
Chilcoot	Dip Site	Loletta Lake	Willamette NF has designated this 'DO NOT DIP UNTIL READLINE OFFICER APPROVAL IS GIVEN'
Chilcoot	Dip Site	Reynolds Ridge	
Chilcoot	Dip Site	Twin Lakes	
Chilcoot	Dip Site	Yokotee Lake	Invasive fish: golden shiner, tui chub. Start with cleaned bucket, do not dip out of other waterbodies until bucket is cleaned.
Chilcoot	Dip Site	Willamette Sump	OK - Start with cleaned bucket, do not dip out of other waterbodies until bucket is cleaned.
Chilcoot	Helibase	Glide	
Chilcoot	Helibase	1	Type 2 Approved
Chilcoot	Helibase	43	Type 2 Approved
Chilcoot	Helibase	51	Type 2 Approved
Chilcoot	Helibase	57	Type 2 Approved
Chilcoot	Incident Command Post	ICP	20641 N. Umpqua Hwy, Glide, OR
Ridge	Helibase	291	Type 2 Approved
Ridge	Helibase	293	Type 2 Approved

Elevation (Feet)	Latitude WGS84 DDM	Longitude WGS84 DDM
2349	43° 25.538' N	122° 46.184' W
	43° 22.712' N	122° 33.711' W
	43° 24.456' N	122° 28.294' W
	43° 24.332' N	122° 42.816' W
	43° 14.410' N	122° 40.319' W
	43° 15.369' N	122° 18.935' W
	43° 14.809' N	122° 46.723' W
	43° 16.733' N	122° 27.391' W
	43° 24.148' N	122° 29.665' W
	43° 25.926' N	122° 30.284' W
	43° 13.002' N	122° 43.439' W
	43° 17.508' N	122° 24.394' W
	43° 29.117' N	122° 39.450' W
	43° 13.605' N	122° 40.982' W
	43° 23.992' N	122° 25.981' W
	43° 23.639' N	122° 30.910' W
	43° 16.022' N	122° 24.896' W
	43° 13.745' N	122° 35.518' W
	43° 15.198' N	122° 47.735' W
771	43° 18.599' N	122° 04.349' W
3510	43° 24.915' N	122° 44.923' W
1516	43° 21.324' N	122° 43.723' W
3800	43° 23.330' N	122° 42.411' W
4373	43° 26.132' N	122° 42.886' W
	43° 18.764' N	123° 04.158' W
5200	43° 23.840' N	122° 31.291' W
	43° 24.224' N	122° 28.909' W

Incident Name	FC Point Type	Label	Latitude WGS84 DDM	Longitude WGS84 DDM
Chilcoot	Drop Point	300	43° 23.178' N	122° 43.354' W
Chilcoot	Drop Point	302	43° 22.836' N	122° 43.698' W
Chilcoot	Drop Point	304	43° 22.841' N	122° 44.197' W
Chilcoot	Drop Point	52	43° 21.940' N	122° 41.618' W
Chilcoot	Drop Point	54	43° 23.927' N	122° 42.200' W
Chilcoot	Drop Point	56	43° 24.886' N	122° 43.541' W
Chilcoot	Drop Point	60	43° 21.013' N	122° 43.791' W
Chilcoot	Drop Point	61	43° 21.458' N	122° 41.560' W
Chilcoot	Drop Point	62	43° 22.798' N	122° 45.703' W
Chilcoot	Drop Point	63	43° 24.988' N	122° 44.821' W
Chilcoot	Drop Point	65	43° 23.577' N	122° 41.300' W
Chilcoot	Drop Point	66	43° 25.467' N	122° 44.053' W
Chilcoot	Drop Point	67	43° 24.543' N	122° 42.774' W
Chilcoot	Drop Point	68	43° 23.625' N	122° 45.110' W
Chilcoot	Drop Point	69	43° 23.058' N	122° 45.202' W
Chilcoot	Incident Command Post	ICP	43° 18.764' N	123° 04.158' W
Ridge	Drop Point	1	43° 24.751' N	122° 36.415' W
Ridge	Drop Point	2	43° 23.600' N	122° 30.403' W



Retardant Avoidance	Division Break	Aerial Hazard
Aerial Hazard	Incident Command Post	Temporary Flight Restriction
Dip Site	Drop Point	Fire Area
Helispot	Contained	Uncontained
Helibase		