

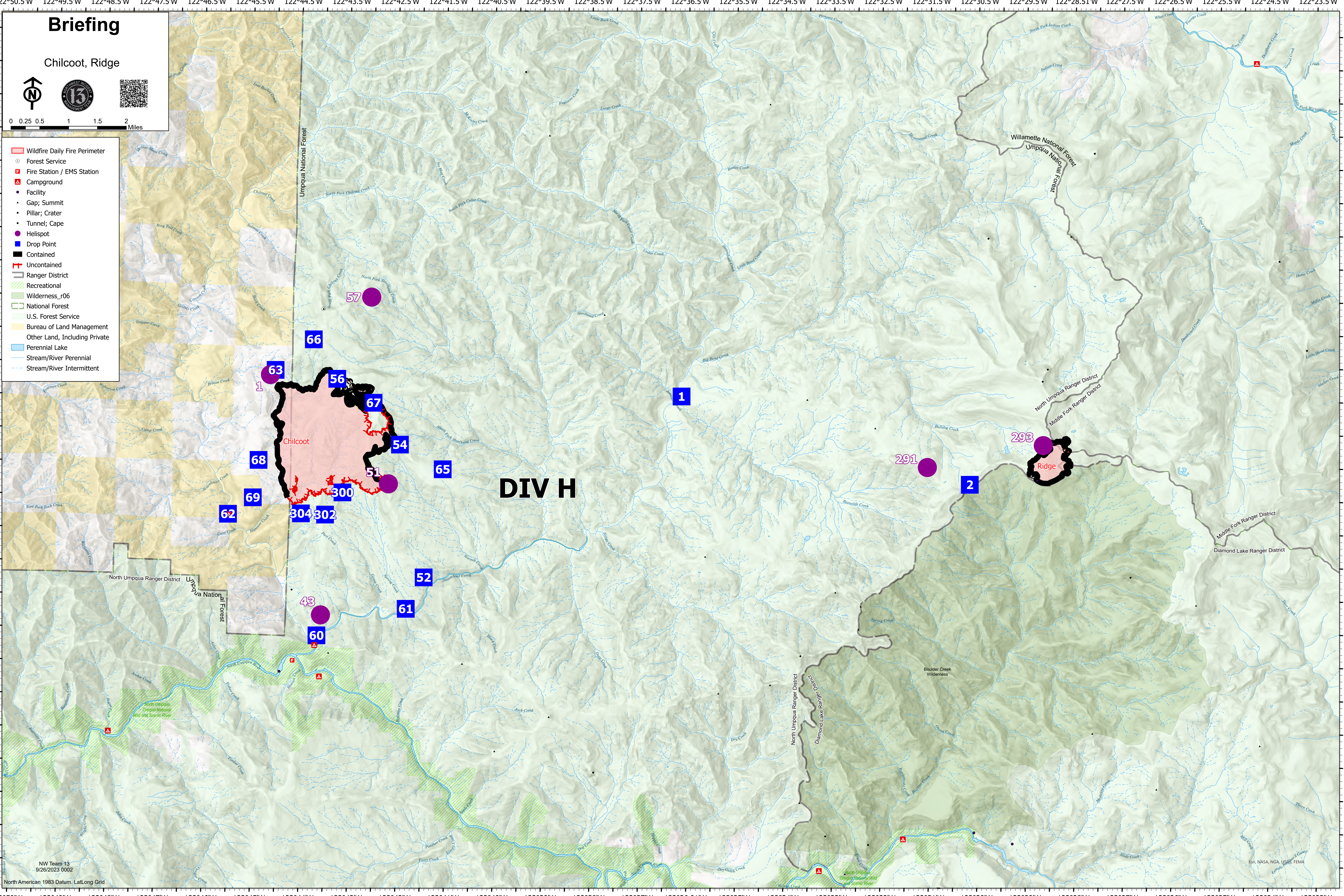
Briefing

Chilcoot, Ridge



0 0.25 0.5 1 1.5 2 Miles

- Wildfire Daily Fire Perimeter
- Forest Service
- Fire Station / EMS Station
- Campground
- Facility
- Gap; Summit
- Pillar; Crater
- Tunnel; Cape
- Helispot
- Drop Point
- Contained
- Uncontained
- Ranger District
- Recreational
- Wilderness_r06
- National Forest
- U.S. Forest Service
- Bureau of Land Management
- Other Land, Including Private
- Perennial Lake
- Stream/River Perennial
- Stream/River Intermittent



DIV H