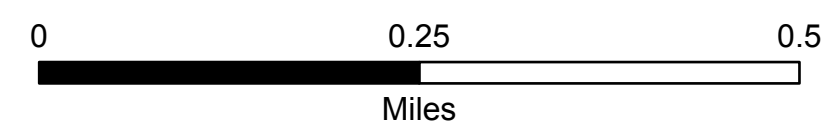


Suppression Repair

Umpqua Fires

Grizzly

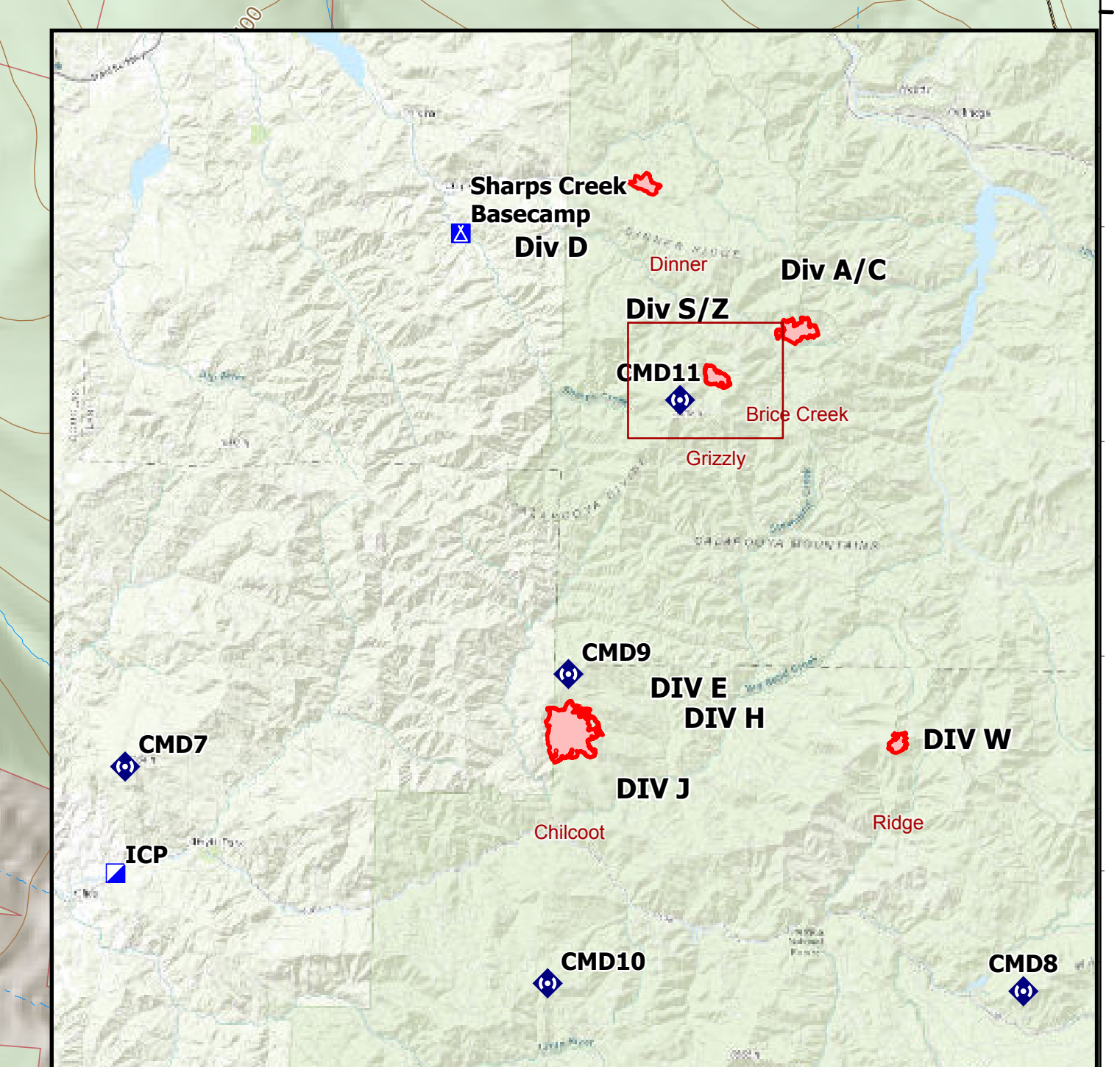
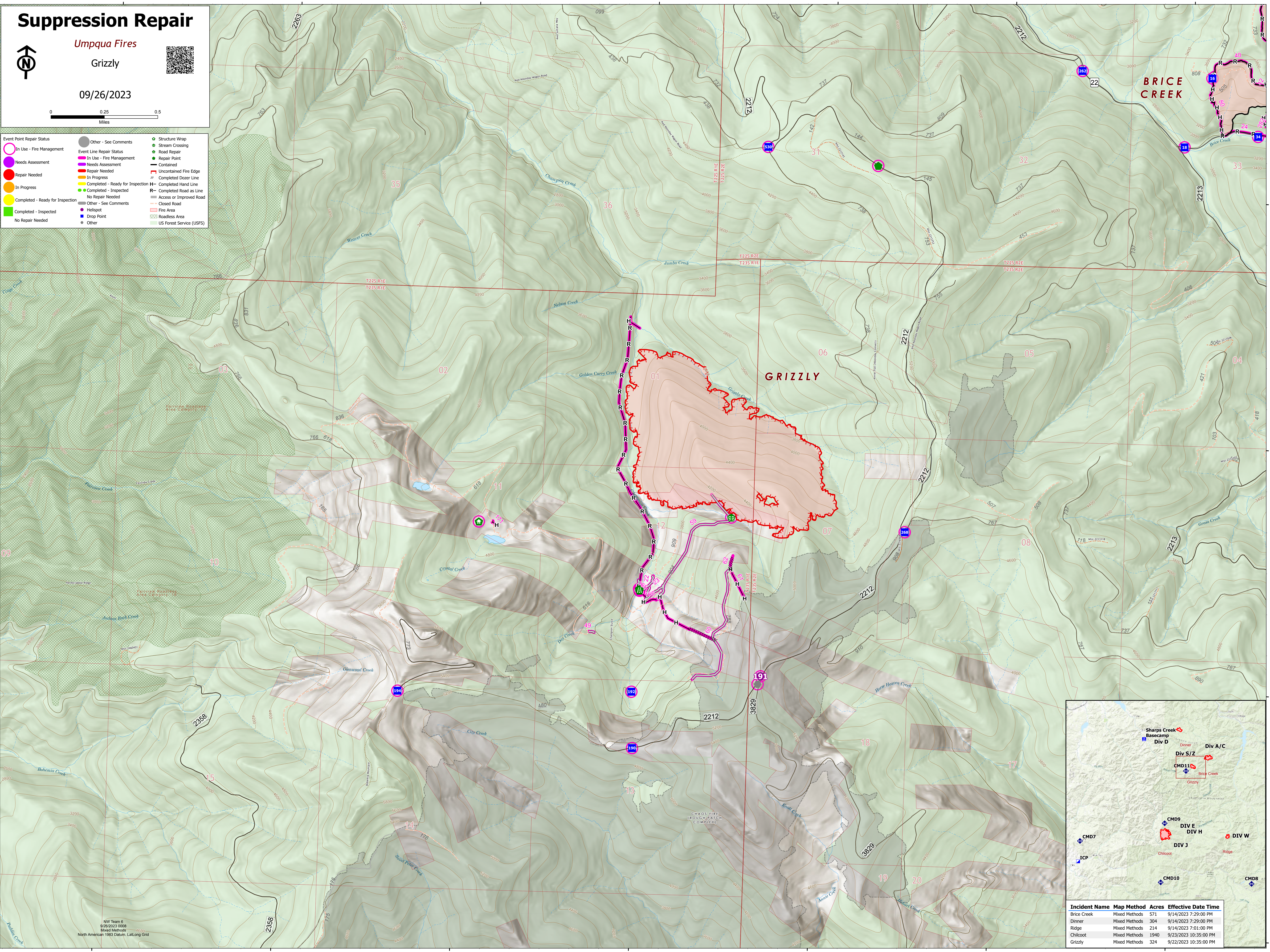
09/26/2023



- | Event Point Repair Status | |
|--|---|
| ○ In Use - Fire Management | ○ Other - See Comments |
| ○ Needs Assessment | ○ In Use - Fire Management |
| ○ Repair Needed | ○ Needs Assessment |
| ○ In Progress | ○ Repair Needed |
| ○ Completed - Ready for Inspection | ○ In Progress |
| ○ Completed - Inspected | ○ Completed - Ready for Inspection |
| ○ No Repair Needed | ○ Completed - Inspected |
| ○ No Repair Needed | ○ No Repair Needed |

- | | |
|--|--|
| — In Use - Fire Management | — Structure Wrap |
| — Repair Needed | — Stream Crossing |
| — In Progress | — Road Repair |
| — Completed - Ready for Inspection | — Repair Point |
| — Completed - Inspected | — Contained |
| — No Repair Needed | — Uncontained Fire Edge |
| — No Repair Needed | — Completed Dozer Line |
| — No Repair Needed | — Completed Hand Line |
| — No Repair Needed | — Completed Road as Line |
| — No Repair Needed | — Access or Improved Road |
| — No Repair Needed | — Closed Road |
| — No Repair Needed | — Fire Area |
| — No Repair Needed | — Roadless Area |
| — No Repair Needed | — US Forest Service (USFS) |

NW Team 6
9/26/2023 0908
Mixed Methods
North American 1983 Datum, LattLong Grid



Incident Name	Map Method	Acres	Effective Date Time
Brice Creek	Mixed Methods	571	9/14/2023 7:29:00 PM
Dinner	Mixed Methods	304	9/14/2023 7:29:00 PM
Ridge	Mixed Methods	214	9/14/2023 7:01:00 PM
Chilcoat	Mixed Methods	1940	9/23/2023 10:35:00 PM
Grizzly	Mixed Methods	324	9/22/2023 10:35:00 PM