

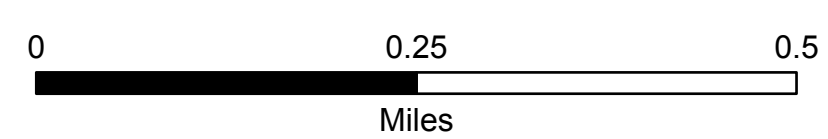
Suppression Repair



Umpqua Fires

Grizzly

09/30/2023

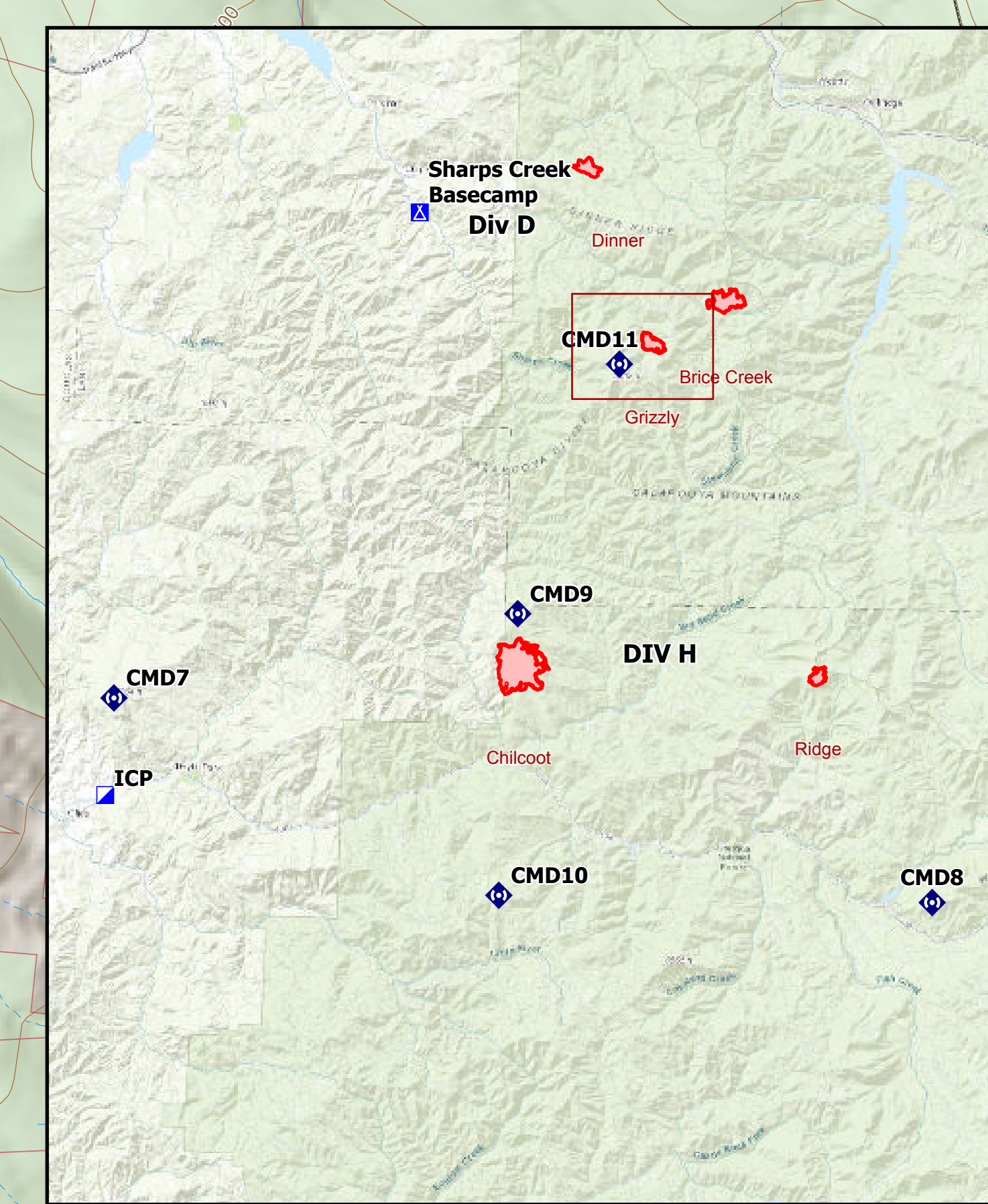


- Event Point Repair Status**
- In Progress
 - Completed - Ready for Inspection
 - Completed - Inspected
 - No Repair Needed
 - Needs Assessment
 - Repair Needed
 - In Progress
 - Completed - Ready for Inspection
 - Completed - Inspected
 - No Repair Needed
- Event Line Repair Status**
- In Progress
 - Completed - Ready for Inspection
 - Completed - Inspected
 - No Repair Needed
 - Needs Assessment
 - Repair Needed
 - In Progress
 - Completed - Ready for Inspection
 - Completed - Inspected
 - No Repair Needed
- Other - See Comments**
- Drop Point
 - Other
 - Structure Whip
 - Stream Crossing
 - Road Repair
 - Repair Point
 - Contained
 - Uncontained Fire Edge
 - Completed Outer Line
 - Completed Hard Line
 - Completed Road as Line
 - Access or Improved Road
 - Closed Road
 - Fire Area
 - Roadless Area
 - US Forest Service (USFS)



BRICE CREEK

GRIZZLY



Incident Name	Map Method	Acres	Effective Date	Time
Brice Creek	Mixed Methods	571	9/14/2023	7:29:00 PM
Dinner	Mixed Methods	304	9/14/2023	7:29:00 PM
Ridge	Mixed Methods	214	9/14/2023	7:01:00 PM
Chilcoot	Mixed Methods	1940	9/23/2023	10:35:00 PM
Grizzly	Mixed Methods	324	9/22/2023	10:35:00 PM