

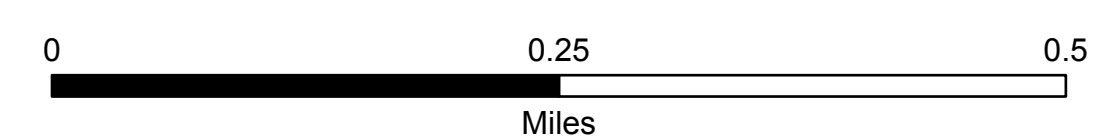
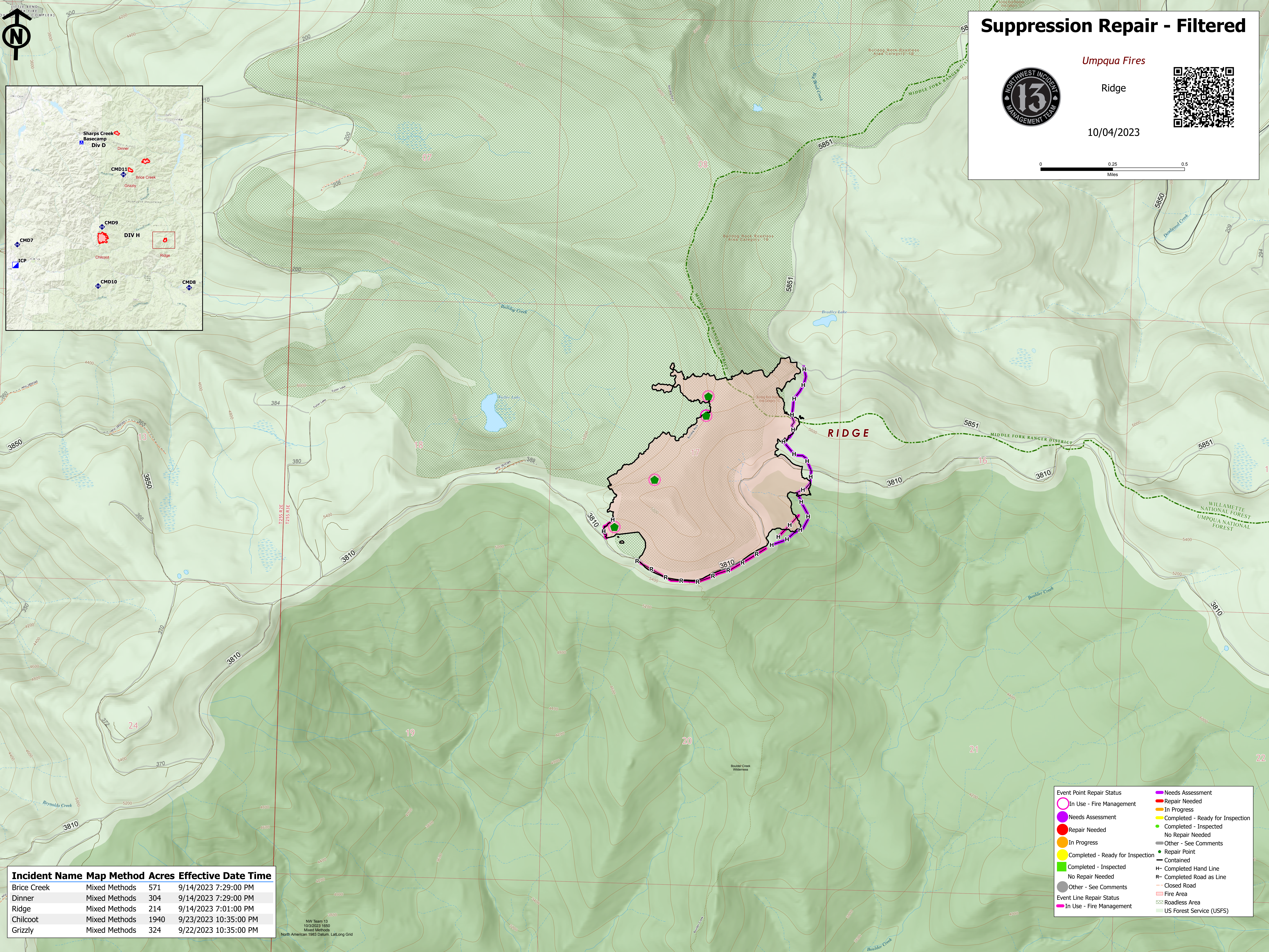
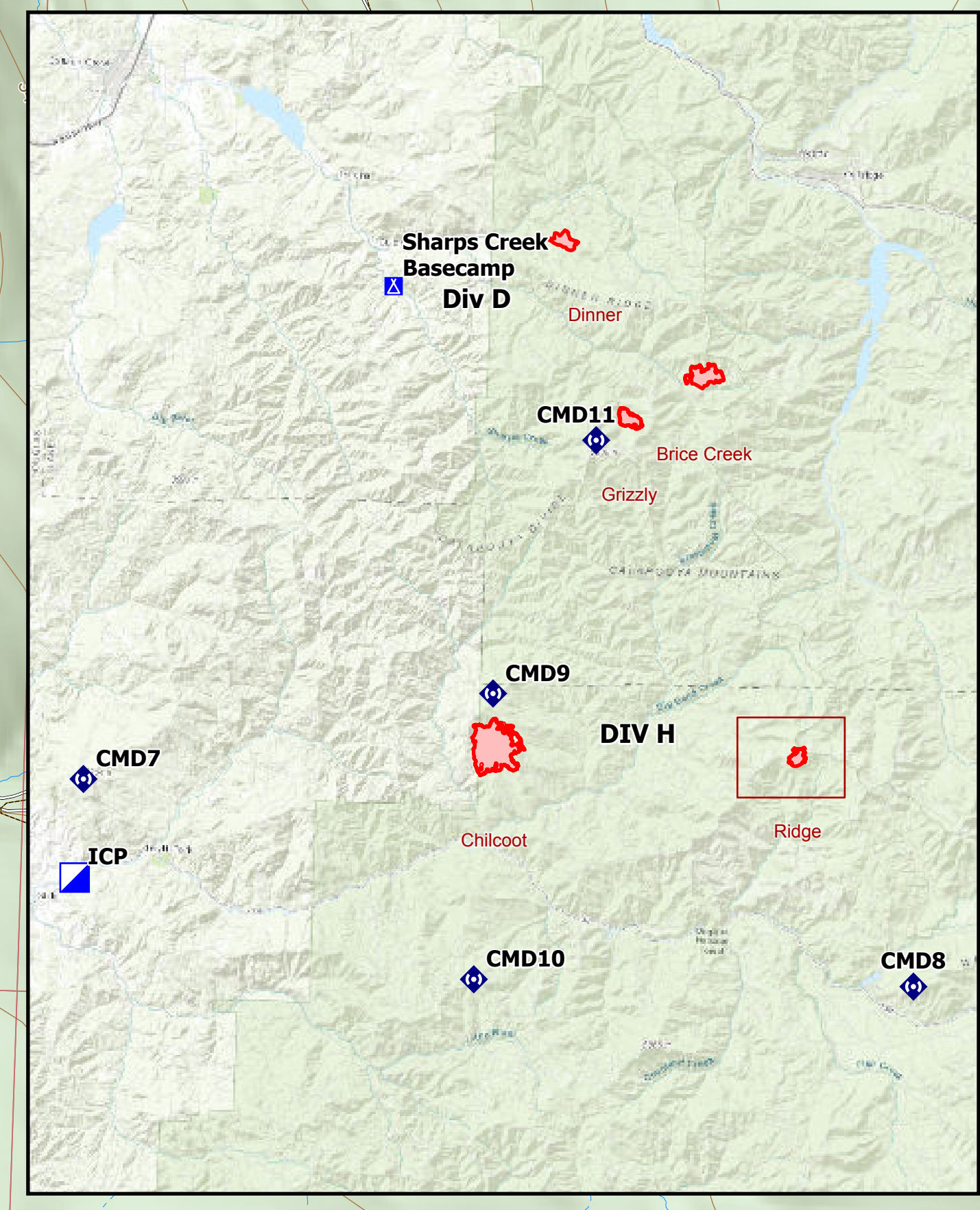


Suppression Repair - Filtered

Umpqua Fires

Ridge

10/04/2023

Incident Name	Map Method	Acres	Effective Date	Time
Brice Creek	Mixed Methods	571	9/14/2023	7:29:00 PM
Dinner	Mixed Methods	304	9/14/2023	7:29:00 PM
Ridge	Mixed Methods	214	9/14/2023	7:01:00 PM
Chilcoot	Mixed Methods	1940	9/23/2023	10:35:00 PM
Grizzly	Mixed Methods	324	9/22/2023	10:35:00 PM

Event Point Repair Status

- In Use - Fire Management (Pink circle)
- Needs Assessment (Purple circle)
- Repair Needed (Red circle)
- In Progress (Yellow circle)
- Completed - Ready for Inspection (Green circle)
- Completed - Inspected (Light Green circle)
- No Repair Needed (Grey circle)
- Other - See Comments (Dark Grey circle)

Event Line Repair Status

- In Use - Fire Management (Pink line)
- Needs Assessment (Purple line)
- Repair Needed (Red line)
- In Progress (Yellow line)
- Completed - Ready for Inspection (Green line)
- Completed - Inspected (Light Green line)
- No Repair Needed (Grey line)
- Other - See Comments (Dark Grey line)

Other Symbols

- Repair Point (Green dot)
- Contained (Black outline)
- Completed Hand Line (H-)
- Completed Road as Line (R-)
- Closed Road (Red dashed line)
- Fire Area (Red shaded area)
- Roadless Area (Green hatched area)
- US Forest Service (USFS) (Green background)

NW Team 13
10/3/2023 1650
Mixed Methods
North American 1983 Datum, Lat/Long Grid