

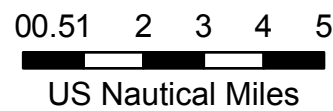
Pilot Map

Umpqua Fires

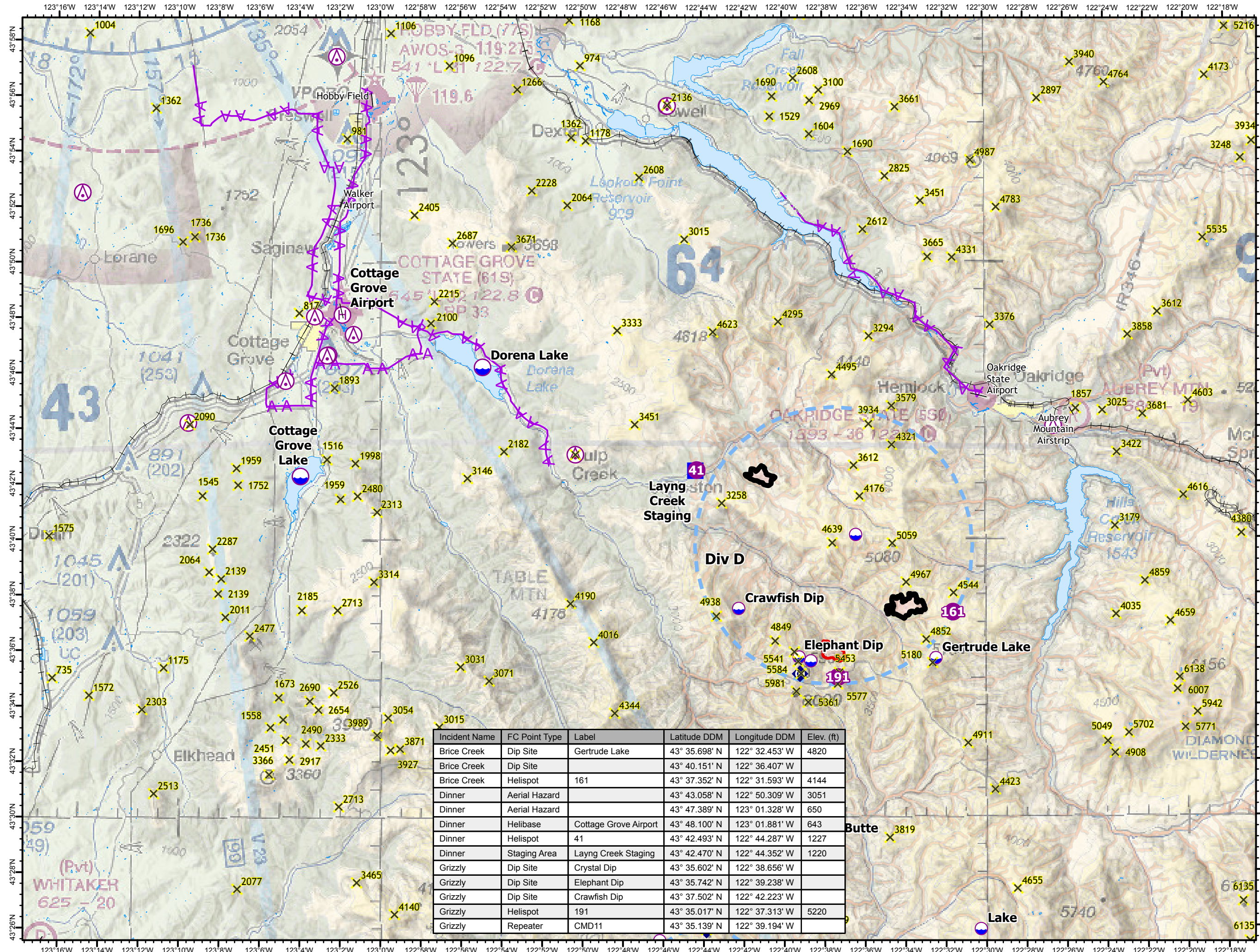
Brice Creek, Dinner, Grizzly

10/06/2023

-  Retardant Avoidance
-  Aerial Hazard (Cell)
-  Aerial Hazard
-  Dip Site
-  Helispot
-  Helibase
-  Staging Area
-  Repeater
-  Aerial Hazard
-  Temporary Flight Restriction
-  Fire Area



NW Team 13
10/5/2023 2003
Mixed Methods
North American 1983 Datum. LatLong Grid



Incident Name	FC Point Type	Label	Latitude DDM	Longitude DDM	Elev. (ft)
Brice Creek	Dip Site	Gertrude Lake	43° 35.698' N	122° 32.453' W	4820
Brice Creek	Dip Site		43° 40.151' N	122° 36.407' W	
Brice Creek	Helispot	161	43° 37.352' N	122° 31.593' W	4144
Dinner	Aerial Hazard		43° 43.058' N	122° 50.309' W	3051
Dinner	Aerial Hazard		43° 47.389' N	123° 01.328' W	650
Dinner	Helibase	Cottage Grove Airport	43° 48.100' N	123° 01.881' W	643
Dinner	Helispot	41	43° 42.493' N	122° 44.287' W	1227
Dinner	Staging Area	Layng Creek Staging	43° 42.470' N	122° 44.352' W	1220
Grizzly	Dip Site	Crystal Dip	43° 35.602' N	122° 38.656' W	
Grizzly	Dip Site	Elephant Dip	43° 35.742' N	122° 39.238' W	
Grizzly	Dip Site	Crawfish Dip	43° 37.502' N	122° 42.223' W	
Grizzly	Helispot	191	43° 35.017' N	122° 37.313' W	5220
Grizzly	Repeater	CMD11	43° 35.139' N	122° 39.194' W	