



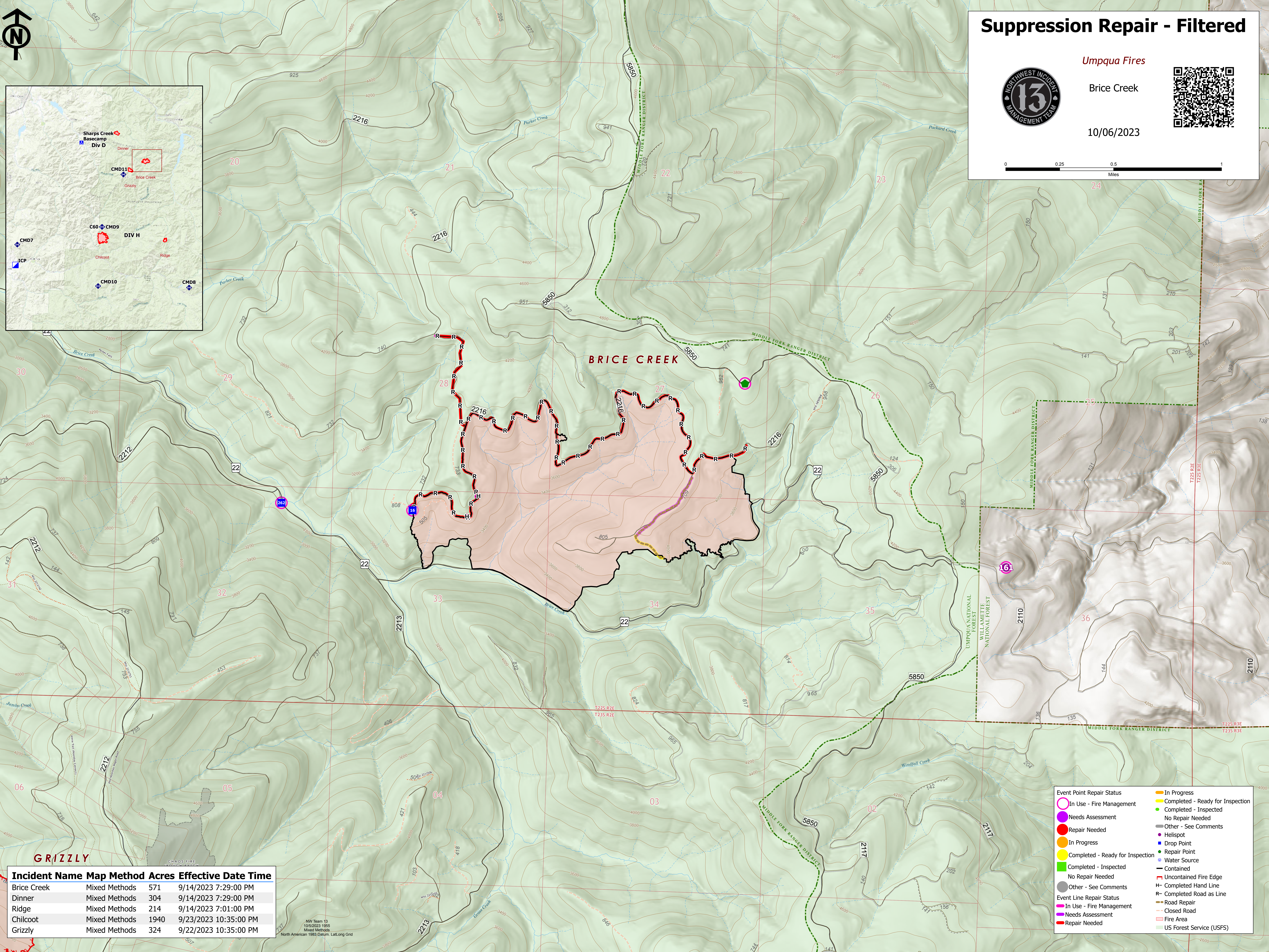
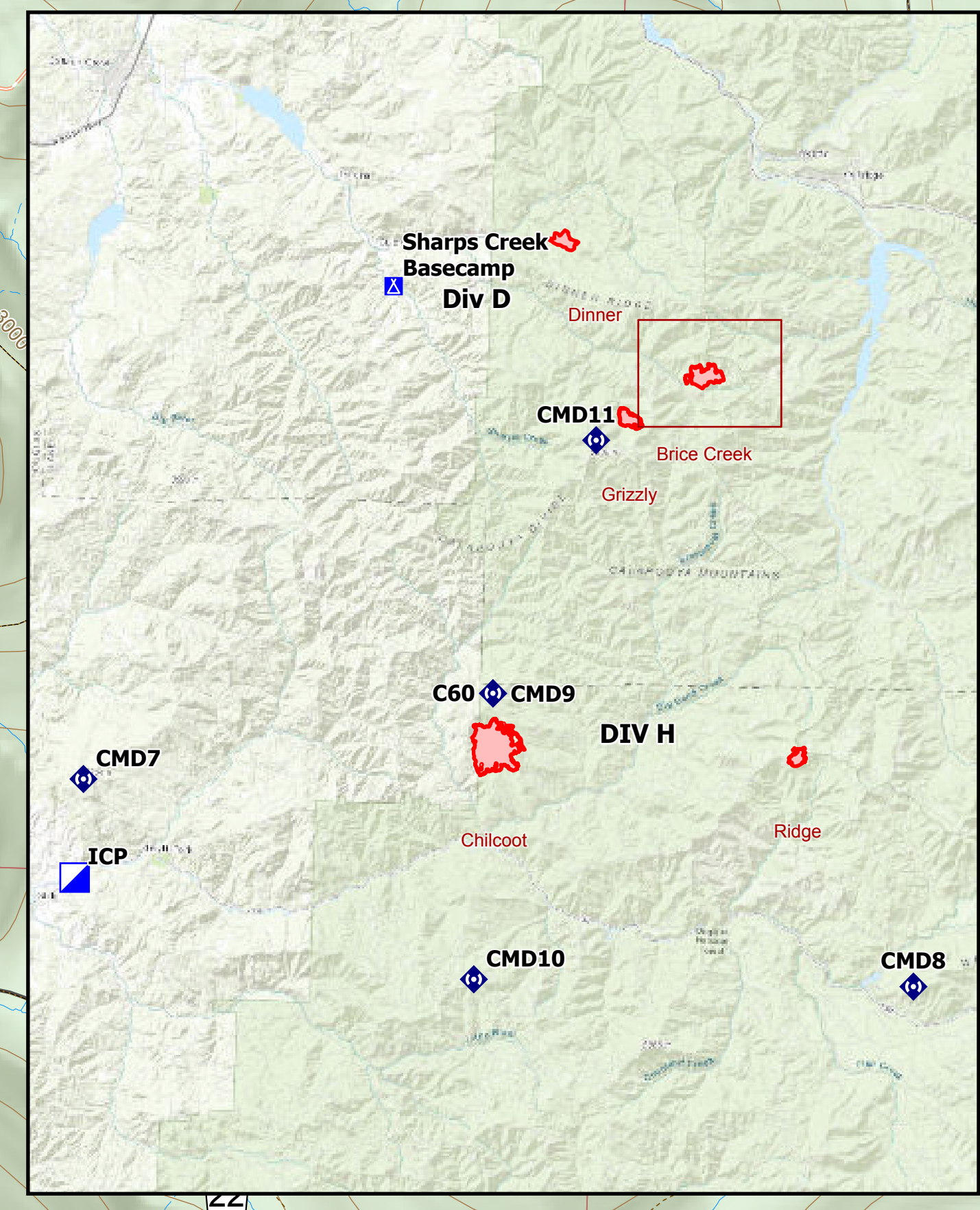
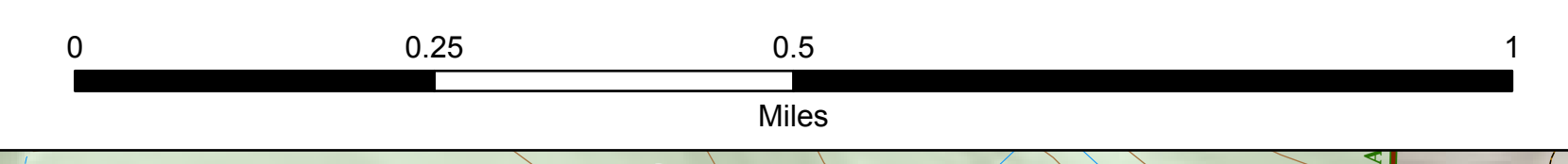
Suppression Repair - Filtered



Umpqua Fires

Brice Creek

10/06/2023



Incident Name	Map Method	Acres	Effective Date	Time
Brice Creek	Mixed Methods	571	9/14/2023	7:29:00 PM
Dinner	Mixed Methods	304	9/14/2023	7:29:00 PM
Ridge	Mixed Methods	214	9/14/2023	7:01:00 PM
Chilcoot	Mixed Methods	1940	9/23/2023	10:35:00 PM
Grizzly	Mixed Methods	324	9/22/2023	10:35:00 PM

Event Point Repair Status

- In Use - Fire Management (Pink circle)
- Needs Assessment (Purple circle)
- Repair Needed (Red circle)
- In Progress (Orange circle)
- Completed - Ready for Inspection (Yellow circle)
- Completed - Inspected (Green circle)
- No Repair Needed (White circle)
- Other - See Comments (Grey circle)

Event Line Repair Status

- In Use - Fire Management (Pink line)
- Needs Assessment (Purple line)
- Repair Needed (Red line)
- In Progress (Orange line)
- Completed - Ready for Inspection (Yellow line)
- Completed - Inspected (Green line)
- No Repair Needed (White line)
- Other - See Comments (Grey line)

Other Symbols

- In Progress (Orange line)
- Completed - Ready for Inspection (Yellow line)
- Completed - Inspected (Green line)
- No Repair Needed (White line)
- Other - See Comments (Grey line)
- Uncontained Fire Edge (Red dashed line)
- Completed Hand Line (Black dashed line)
- Completed Road as Line (Black solid line)
- Road Repair (Brown dashed line)
- Closed Road (Red dashed line)
- Fire Area (Red shaded area)
- US Forest Service (USFS) (Green shaded area)