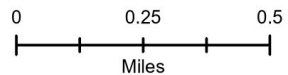


Brice Creek OR-UPF-000359

IAP Map
Umpqua Fires
Branch I
09/08/2023

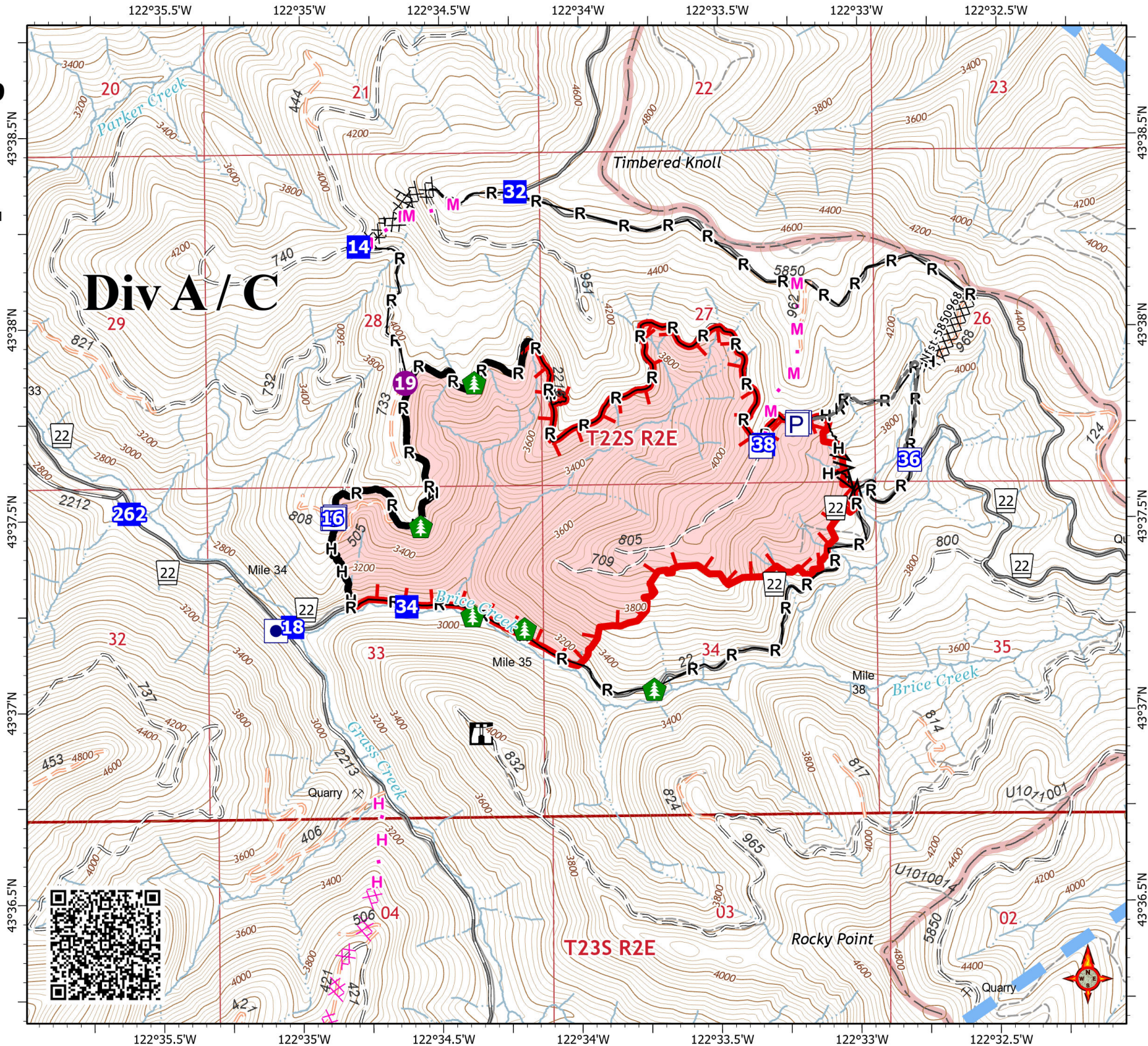
583 acres at 9/6/2023 9:44:00 PM

- Other Property
- Pump
- Water Tank
- Helispot
- Drop Point
- Lookout
- Hazard Tree
- Completed Dozer Line
- Completed Fuel Break
- Completed Hand Line
- Completed Road as Line
- Planned Dozer Line
- Planned Hand Line
- Planned Mixed Construction Line
- Other
- Temporary Flight Restriction
- Contained
- Uncontained Fire Edge
- Paved Road
- Gravel Road, Suitable for Passenger Car
- Road Not Suitable for Passenger Car
- Closed Road
- No Oper Maint Level
- Trail
- Fire Area



S. Bushnell
09 07 23
2106 Hours



Datum: North American 1983

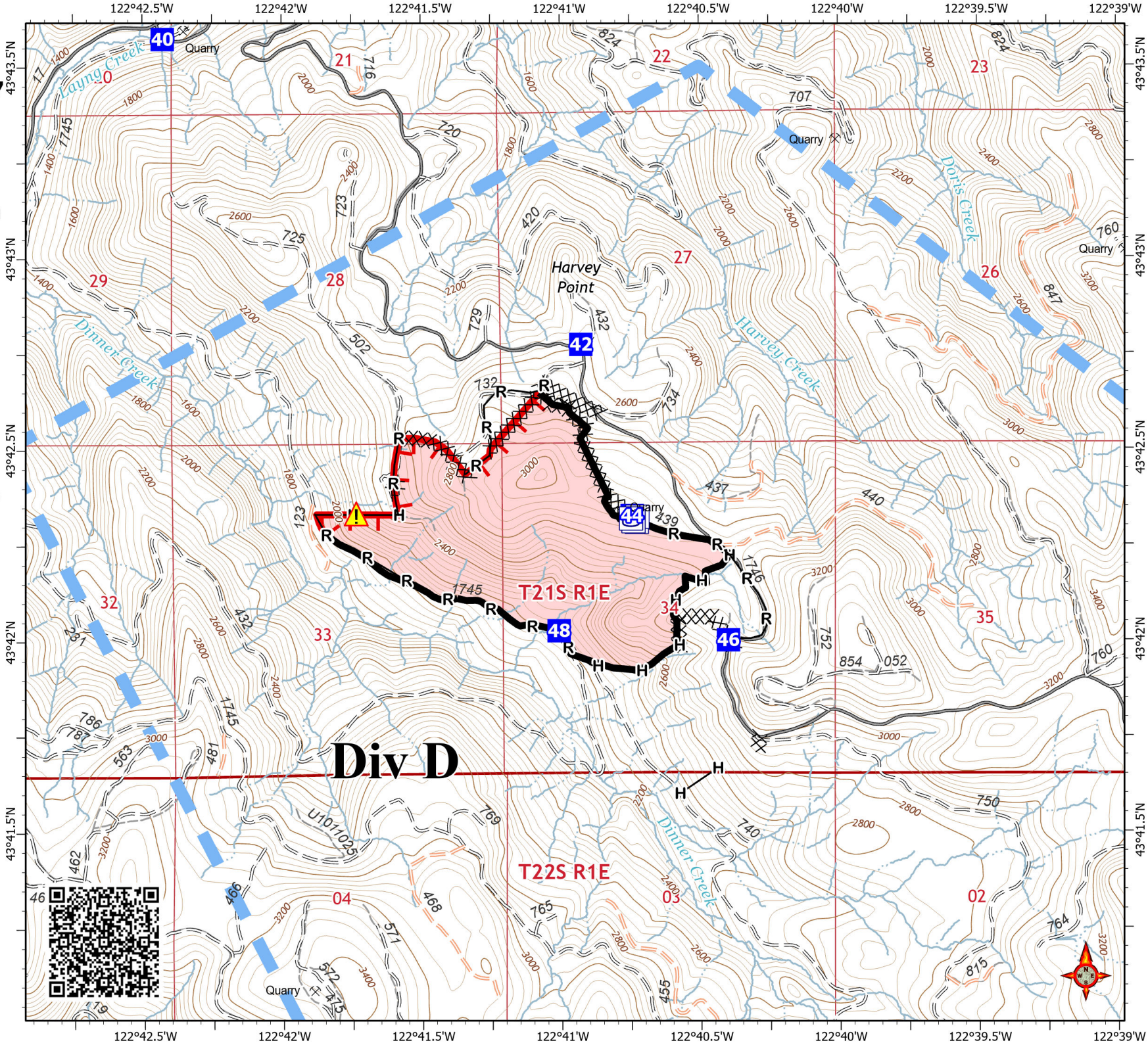


Dinner OR-UPF-000357

IAP Map
Umpqua Fires
Branch I
09/08/2023

304 acres at 9/2/2023 2:30:00 PM

-  Pump
-  Water Tank
-  Drop Point
-  Hazard
-  Completed Dozer Line
-  Completed Hand Line
-  Completed Road as Line
-  Temporary Flight Restriction
-  Contained
-  Uncontained Fire Edge
-  Paved Road
-  Road Not Suitable for Passenger Car
-  Closed Road
-  No Oper Maint Level
-  Trail
-  Fire Area



S. Bushnell
09 07 23
2107 Hours

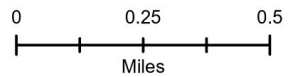
Datum: North American 1983

Grizzly OR-UPF-000341

IAP Map
Umpqua Fires
Branch I
09/08/2023

106 acres at 9/5/2023 8:37:00 PM

- Other Property
- Pump
- Water Tank
- Helispot
- Drop Point
- Value at Risk
- Gate
- Structure Wrap
- Internet Access
- Repeater
- Hazard
- Structures
- Forest Service Facility
- Lookout - Permanent
- Completed Dozer Line
- Completed Hand Line
- Planned Dozer Line
- Access or Improved Road
- Temporary Flight Restriction
- Uncontained Fire Edge
- Gravel Road, Suitable for Passenger Car
- Dirt Road, Suitable for Passenger Car
- Road Not Suitable for Passenger Car
- Closed Road
- No Oper Maint Level
- Trail
- Fire Area



S. Bushnell
09 07 23
2108 Hours

Datum: North American 1983

