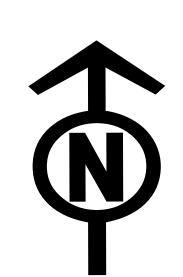


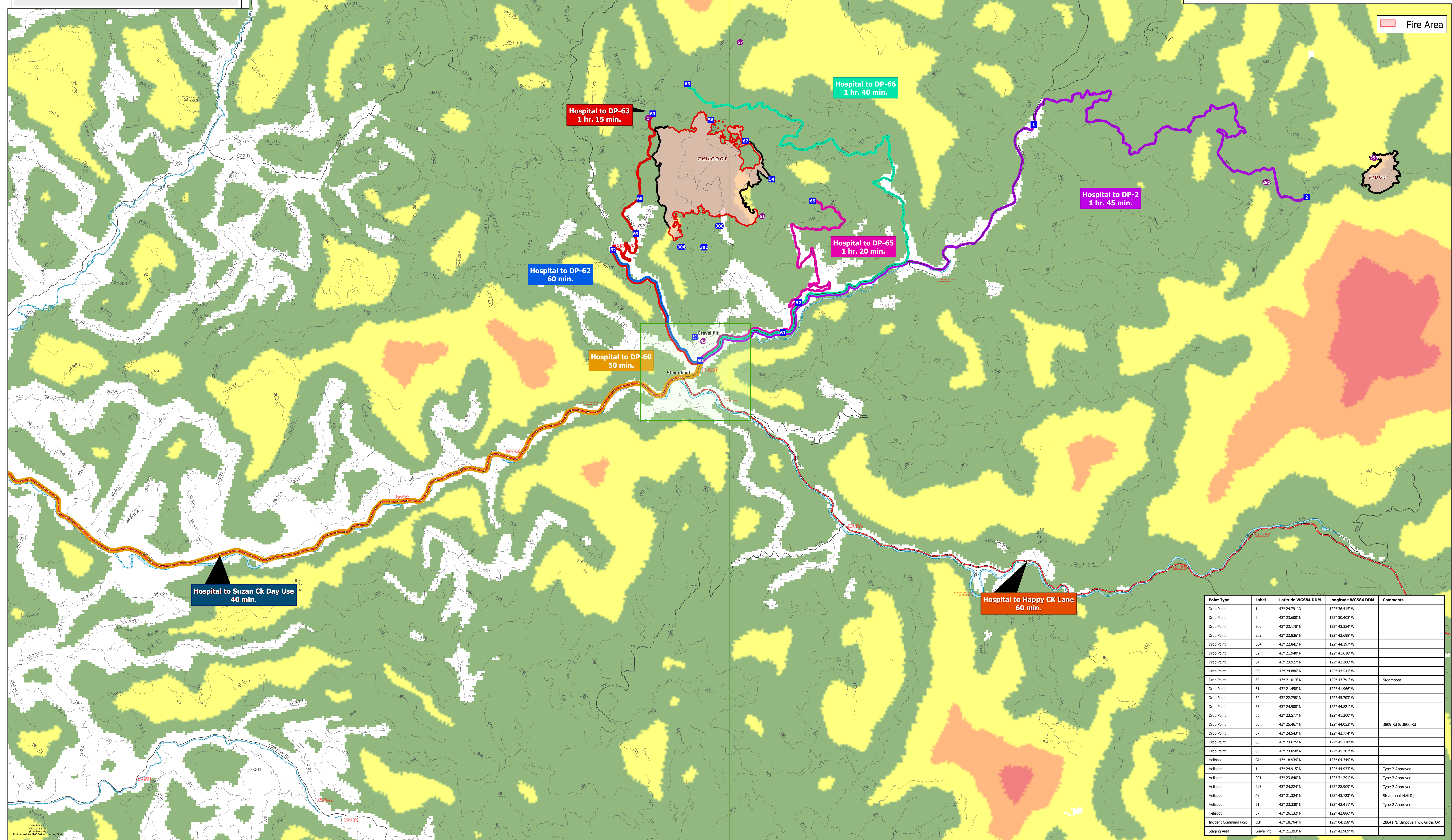
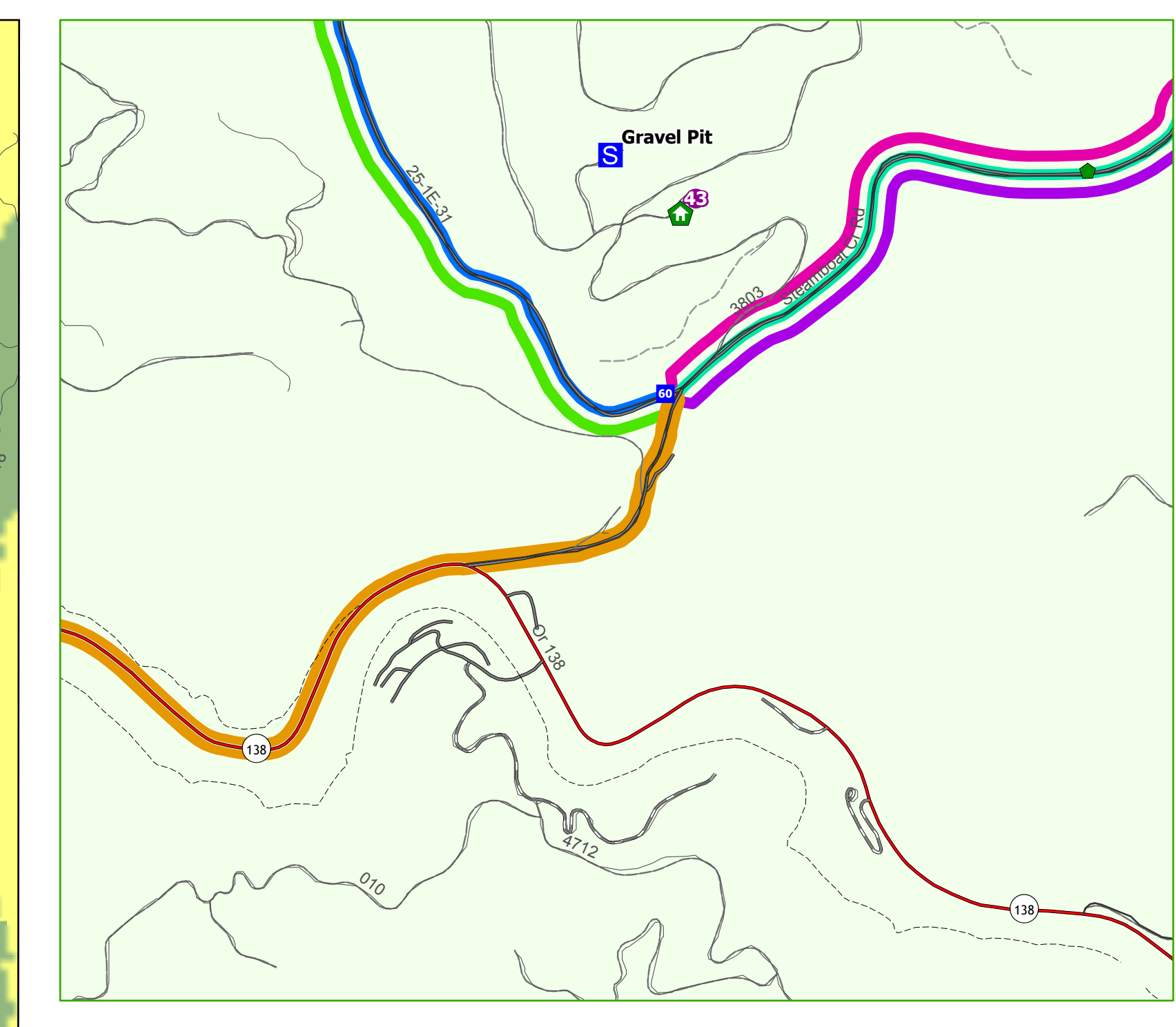
Medical Transportation

Umpqua Fires
Chilcoat, Ridge
09/18/2023



0 1 2
Miles

Incident Name	Map Method	Acres	Effective Date Time
Chilcoat	Mixed Methods	1781	9/14/2023 7:01:00 PM
Ridge	Mixed Methods	214	9/14/2023 7:01:00 PM



Hospital to DP-63
1 hr. 15 min.

Hospital to DP-66
1 hr. 40 min.

Hospital to DP-2
1 hr. 45 min.

Hospital to DP-65
1 hr. 20 min.

Hospital to DP-62
60 min.

Hospital to DP-60
50 min.

Hospital to Suzan Ck Day Use
40 min.

Hospital to Happy CK Lane
60 min.

Point Type	Label	Latitude WGS84 DDM	Longitude WGS84 DDM	Comments
Drop Point	1	43° 24.791' N	122° 36.415' W	
Drop Point	2	43° 23.609' N	122° 30.407' W	
Drop Point	300	43° 23.178' N	122° 43.354' W	
Drop Point	302	43° 22.836' N	122° 43.698' W	
Drop Point	304	43° 22.841' N	122° 44.197' W	
Drop Point	52	43° 21.940' N	122° 41.618' W	
Drop Point	54	43° 23.927' N	122° 42.200' W	
Drop Point	56	43° 24.886' N	122° 43.541' W	
Drop Point	60	43° 21.013' N	122° 43.791' W	Steamboat
Drop Point	61	43° 21.458' N	122° 41.966' W	
Drop Point	62	43° 22.788' N	122° 45.703' W	
Drop Point	63	43° 24.988' N	122° 44.821' W	
Drop Point	65	43° 23.577' N	122° 41.300' W	
Drop Point	66	43° 25.463' N	122° 44.053' W	3809 Rd & 3806 Rd
Drop Point	67	43° 24.543' N	122° 42.774' W	
Drop Point	68	43° 23.625' N	122° 46.110' W	
Drop Point	69	43° 23.058' N	122° 45.202' W	
Helibase	Glide	43° 18.939' N	122° 04.349' W	
Helispot	1	43° 24.915' N	122° 44.923' W	Type 2 Approved
Helispot	291	43° 23.840' N	122° 31.291' W	Type 2 Approved
Helispot	293	43° 24.224' N	122° 28.909' W	Type 2 Approved
Helispot	43	43° 21.324' N	122° 43.723' W	Steamboat Hel Dip
Helispot	51	43° 23.330' N	122° 42.411' W	Type 2 Approved
Helispot	57	43° 26.132' N	122° 42.880' W	
Incident Command Post	ICP	43° 18.764' N	122° 04.158' W	20641 N Umpqua Hwy, Glide, OR
Staging Area	Gravel Pit	43° 21.387' N	122° 43.909' W	