

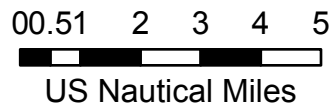
Pilot Map

Umpqua Fires

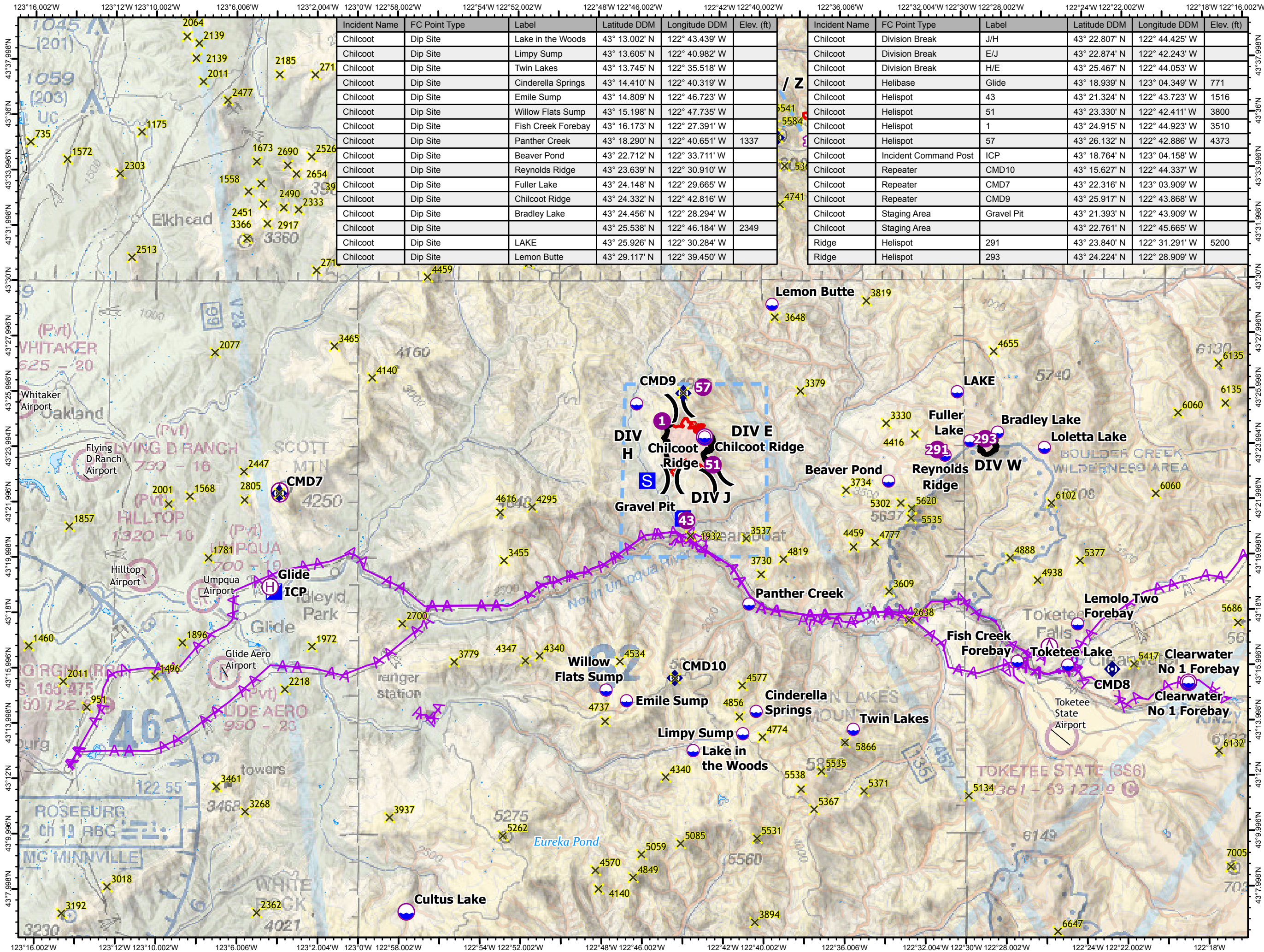
Chilcoot, Ridge

09/18/2023

-  Retardant Avoidance
-  Aerial Hazard
-  Dip Site
-  Helispot
-  Helibase
-  Division Break
-  Incident Command Post
-  Staging Area
-  Repeater
-  Aerial Hazard
-  Temporary Flight Restriction
-  Fire Area



NW Team 6
9/17/2023 2131
Mixed Methods
North American 1983 Datum. LatLong Grid



| Incident Name | FC Point Type | Label | Latitude DDM | Longitude DDM | Elev. (ft) |
|---------------|---------------|--------------------|---------------|----------------|------------|
| Chilcoot | Dip Site | Lake in the Woods | 43° 13.002' N | 122° 43.439' W | |
| Chilcoot | Dip Site | Limpy Sump | 43° 13.605' N | 122° 40.982' W | |
| Chilcoot | Dip Site | Twin Lakes | 43° 13.745' N | 122° 35.518' W | |
| Chilcoot | Dip Site | Cinderella Springs | 43° 14.410' N | 122° 40.319' W | |
| Chilcoot | Dip Site | Emile Sump | 43° 14.809' N | 122° 46.723' W | |
| Chilcoot | Dip Site | Willow Flats Sump | 43° 15.198' N | 122° 47.735' W | |
| Chilcoot | Dip Site | Fish Creek Forebay | 43° 16.173' N | 122° 27.391' W | |
| Chilcoot | Dip Site | Panther Creek | 43° 18.290' N | 122° 40.651' W | 1337 |
| Chilcoot | Dip Site | Beaver Pond | 43° 22.712' N | 122° 33.711' W | |
| Chilcoot | Dip Site | Reynolds Ridge | 43° 23.639' N | 122° 30.910' W | |
| Chilcoot | Dip Site | Fuller Lake | 43° 24.148' N | 122° 29.665' W | |
| Chilcoot | Dip Site | Chilcoot Ridge | 43° 24.332' N | 122° 42.816' W | |
| Chilcoot | Dip Site | Bradley Lake | 43° 24.456' N | 122° 28.294' W | |
| Chilcoot | Dip Site | LAKE | 43° 25.538' N | 122° 46.184' W | 2349 |
| Chilcoot | Dip Site | Lemon Butte | 43° 29.117' N | 122° 39.450' W | |

| Incident Name | FC Point Type | Label | Latitude DDM | Longitude DDM | Elev. (ft) |
|---------------|-----------------------|------------|---------------|----------------|------------|
| Chilcoot | Division Break | J/H | 43° 22.807' N | 122° 44.425' W | |
| Chilcoot | Division Break | E/J | 43° 22.874' N | 122° 42.243' W | |
| Chilcoot | Division Break | H/E | 43° 25.467' N | 122° 44.053' W | |
| Chilcoot | Helibase | Glide | 43° 18.939' N | 123° 04.349' W | 771 |
| Chilcoot | Helispot | 43 | 43° 21.324' N | 122° 43.723' W | 1516 |
| Chilcoot | Helispot | 51 | 43° 23.330' N | 122° 42.411' W | 3800 |
| Chilcoot | Helispot | 1 | 43° 24.915' N | 122° 44.923' W | 3510 |
| Chilcoot | Helispot | 57 | 43° 26.132' N | 122° 42.886' W | 4373 |
| Chilcoot | Incident Command Post | ICP | 43° 18.764' N | 123° 04.158' W | |
| Chilcoot | Repeater | CMD10 | 43° 15.627' N | 122° 44.337' W | |
| Chilcoot | Repeater | CMD7 | 43° 22.316' N | 123° 03.909' W | |
| Chilcoot | Repeater | CMD9 | 43° 25.917' N | 122° 43.868' W | |
| Chilcoot | Staging Area | Gravel Pit | 43° 21.393' N | 122° 43.909' W | |
| Chilcoot | Staging Area | | 43° 22.761' N | 122° 45.665' W | |
| Ridge | Helispot | 291 | 43° 23.840' N | 122° 31.291' W | 5200 |
| Ridge | Helispot | 293 | 43° 24.224' N | 122° 28.909' W | |